

COME HOME
TO THE GOLD STANDARD
OF GREEN LIVING

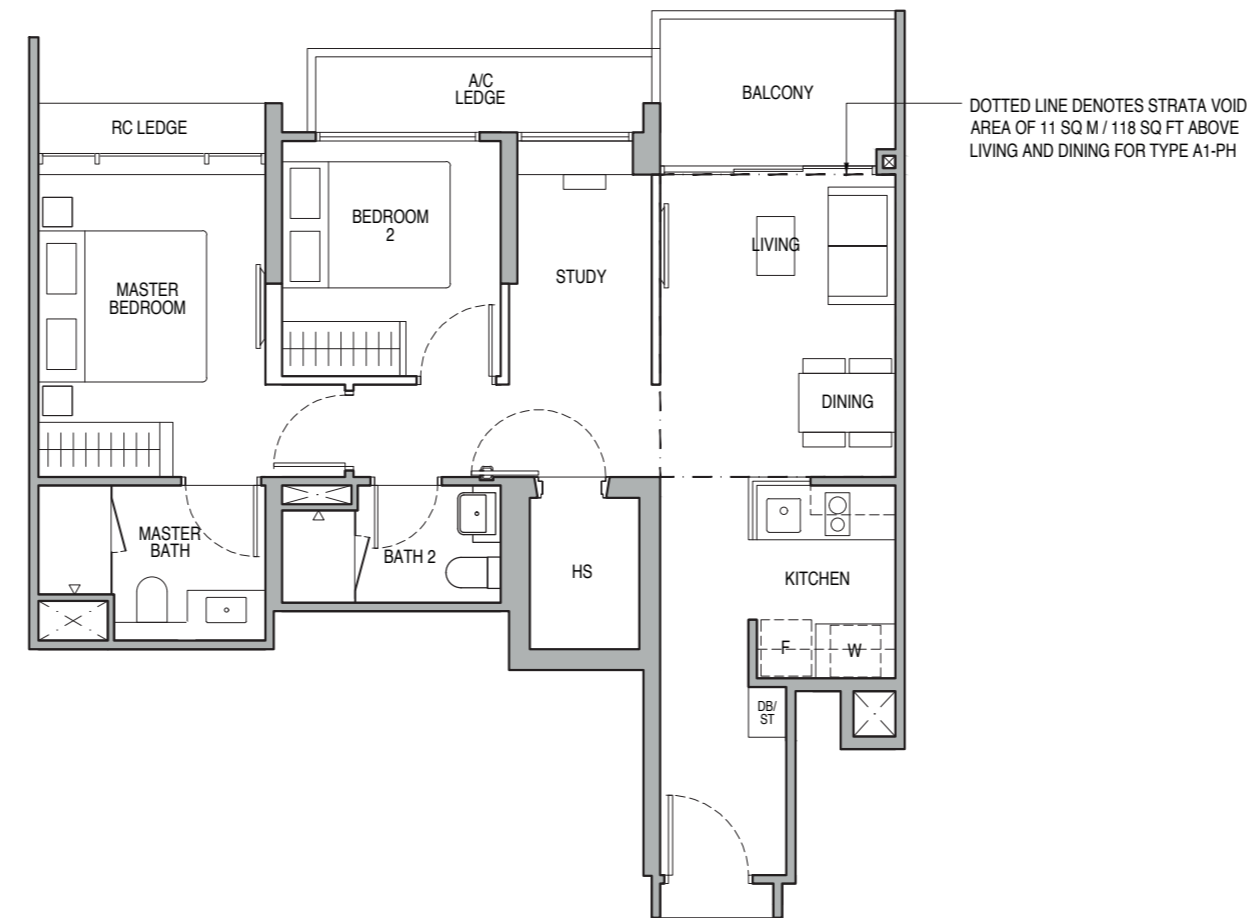
2-BEDROOM + STUDY

Type A1

75 sq m / 807 sq ft
BLK 55 : #04-09 to #13-09

Type A1-PH

86 sq m / 926 sq ft
BLK 55 : #14-09
Including strata void area of 11 sq m / 118 sq ft above living and dining with 4.5m floor to ceiling height

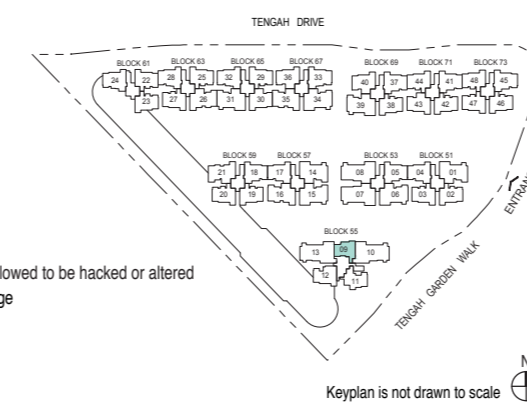


DOTTED LINE DENOTES STRATA VOID AREA OF 11 SQ M / 118 SQ FT ABOVE LIVING AND DINING FOR TYPE A1-PH



PES - Private Enclosed Space
W - Washer/Dryer (not included)
WC - Water Closet
HS - Household Shelter
DB/ST - Distribution Board/Storage
RC - Reinforced Concrete
F - Fridge (not included)
A/C - Air-Conditioner
Wall not allowed to be hacked or altered
Mirror Image

Area includes air-conditioner (A/C) ledge, balcony and strata void area where applicable. The plans are subject to change as may be approved by relevant authorities. All floor plans are approximate measurements only and are subject to government re-survey. The balcony shall not be enclosed unless with the approved balcony screen. For an illustration of the approved balcony screen, please refer to the diagram annexed hereto as "Annexure A".



Keyplan is not drawn to scale

3-BEDROOM DELUXE

Type B1

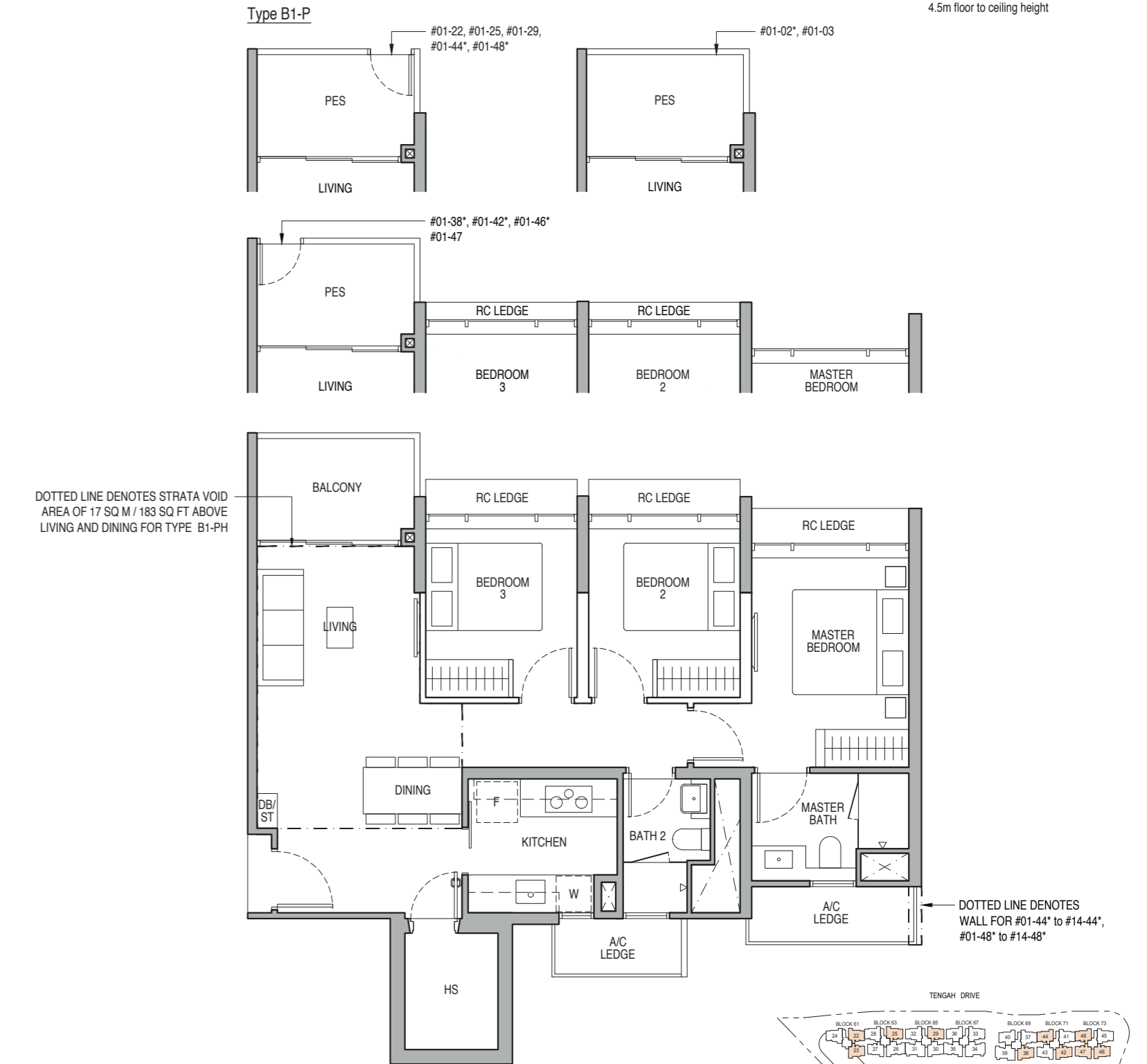
87 sq m / 936 sq ft
BLK 51 : #02-02* to #13-02*, #02-03 to #13-03
BLK 59 : #06-19* to #13-19*
BLK 61 : #02-22 to #13-22, #06-23* to #13-23*
BLK 63 : #02-25 to #13-25
BLK 65 : #02-29 to #13-29
BLK 69 : #02-38* to #13-38*
BLK 71 : #02-42* to #13-42*, #02-44* to #13-44*
BLK 73 : #02-46* to #13-46*, #02-47 to #13-47, #02-48* to #13-48*

Type B1-P

87 sq m / 936 sq ft
BLK 51 : #01-02*, #01-03
BLK 59 : #01-22
BLK 63 : #01-25
BLK 65 : #01-29
BLK 69 : #01-38*
BLK 71 : #01-42*, #01-44*
BLK 73 : #01-46*, #01-47, #01-48*

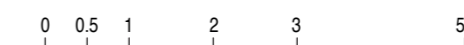
Type B1-PH

104 sq m / 1119 sq ft
BLK 51 : #14-02*, #14-03
BLK 59 : #14-19*
BLK 61 : #14-22, #14-23*
BLK 63 : #14-25
BLK 65 : #14-29
BLK 69 : #14-38*
BLK 71 : #14-42*, #14-44*
BLK 73 : #14-46*, #14-47, #14-48*
Including strata void area of 17 sq m / 183 sq ft above living and dining with 4.5m floor to ceiling height



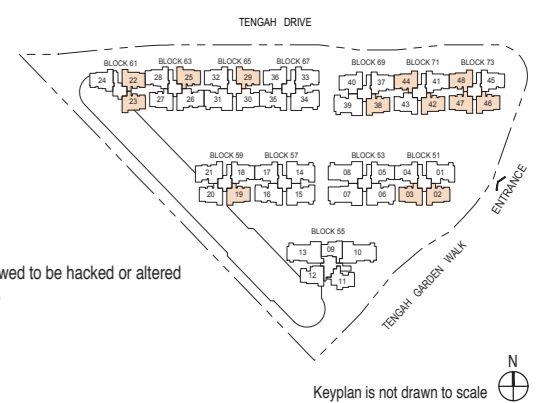
DOTTED LINE DENOTES STRATA VOID AREA OF 17 SQ M / 183 SQ FT ABOVE LIVING AND DINING FOR TYPE B1-PH

DOTTED LINE DENOTES WALL FOR #01-44* to #14-44*, #01-48* to #14-48*



PES - Private Enclosed Space
W - Washer/Dryer (not included)
WC - Water Closet
HS - Household Shelter
DB/ST - Distribution Board/Storage
RC - Reinforced Concrete
F - Fridge (not included)
A/C - Air-Conditioner
Wall not allowed to be hacked or altered
Mirror Image

Area includes air-conditioner (A/C) ledge, balcony and strata void area where applicable. The plans are subject to change as may be approved by relevant authorities. All floor plans are approximate measurements only and are subject to government re-survey. The balcony shall not be enclosed unless with the approved balcony screen. For an illustration of the approved balcony screen, please refer to the diagram annexed hereto as "Annexure A".



Keyplan is not drawn to scale

3-BEDROOM DELUXE

3-BEDROOM DELUXE

Type B2

87 sq m / 936 sq ft
 BLK 59 : #06-20 to #13-20
 BLK 63 : #02-27 to #13-27

Type B2-P

87 sq m / 936 sq ft
 BLK 63 : #01-27

Type B2-PH

104 sq m / 1119 sq ft
 BLK 59 : #14-20
 BLK 63 : #14-27
 Including strata void area of 17 sq m / 183 sq ft above living and dining with 4.5m floor to ceiling height

Type B3

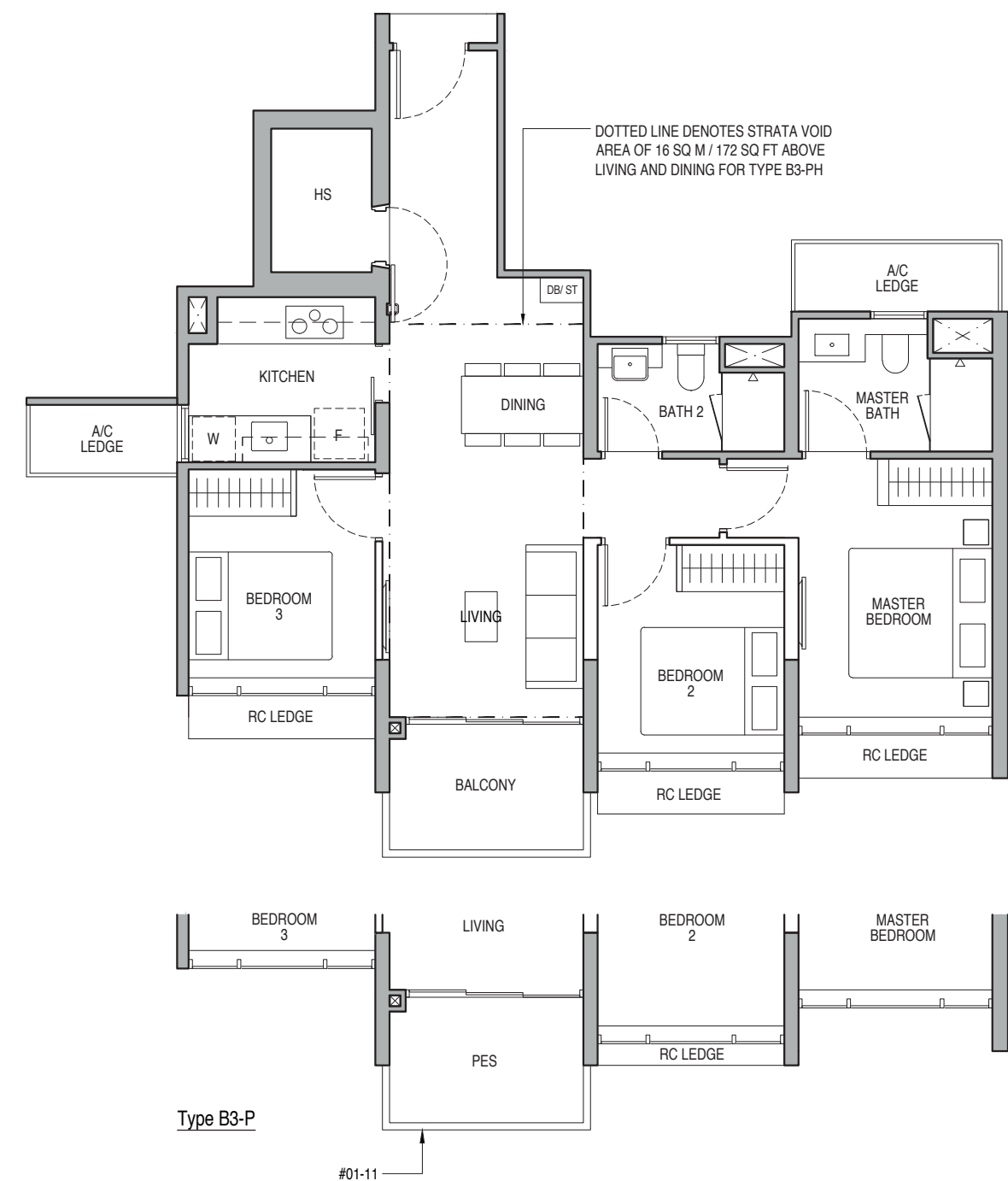
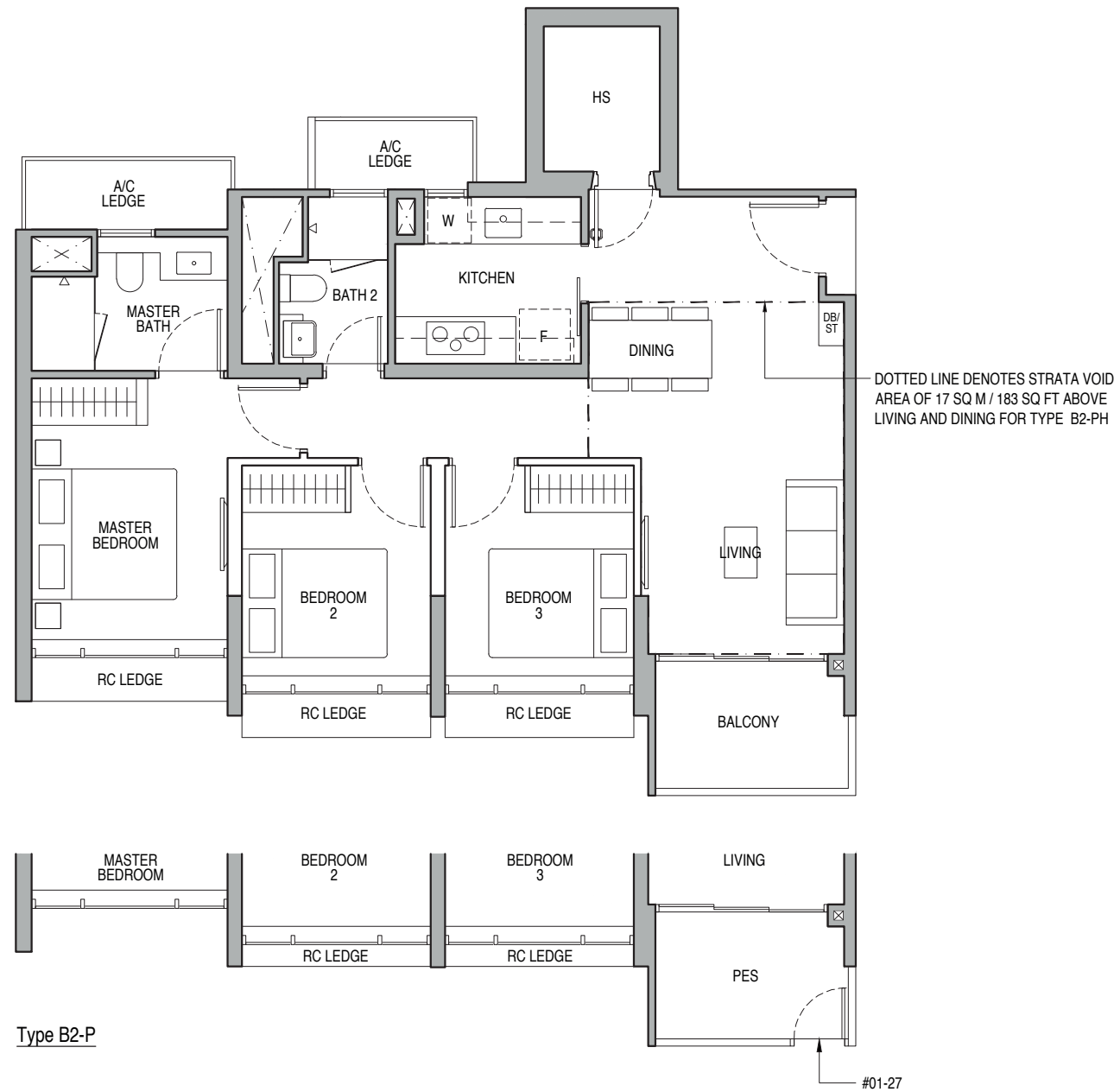
87 sq m / 936 sq ft
 BLK 55 : #02-11 to #13-11

Type B3-P

87 sq m / 936 sq ft
 BLK 55 : #01-11

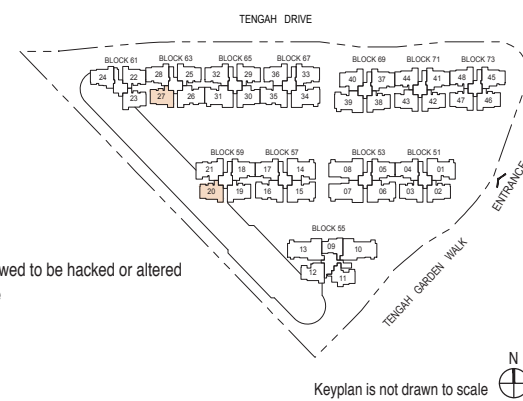
Type B3-PH

103 sq m / 1109 sq ft
 BLK 55 : #14-11
 Including strata void area of 16 sq m / 172 sq ft above living and dining with 4.5m floor to ceiling height



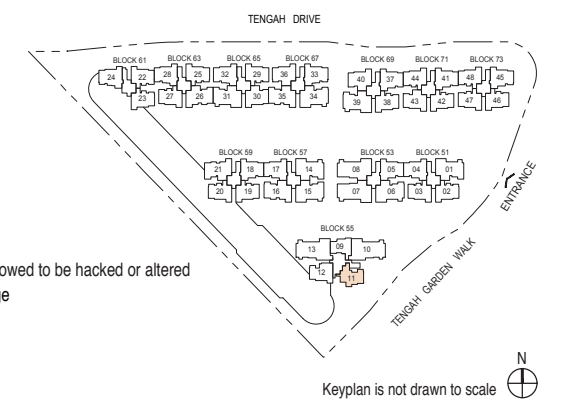
PES - Private Enclosed Space
 W - Washer/Dryer (not included)
 WC - Water Closet
 HS - Household Shelter
 DB/ST - Distribution Board/Storage
 RC - Reinforced Concrete
 F - Fridge (not included)
 A/C - Air-Conditioner
 Wall not allowed to be hacked or altered
 Mirror Image

Area includes air-conditioner (A/C) ledge, balcony and strata void area where applicable. The plans are subject to change as may be approved by relevant authorities. All floor plans are approximate measurements only and are subject to government re-survey. The balcony shall not be enclosed unless with the approved balcony screen. For an illustration of the approved balcony screen, please refer to the diagram annexed hereto as "Annexure A".



PES - Private Enclosed Space
 W - Washer/Dryer (not included)
 WC - Water Closet
 HS - Household Shelter
 DB/ST - Distribution Board/Storage
 RC - Reinforced Concrete
 F - Fridge (not included)
 A/C - Air-Conditioner
 Wall not allowed to be hacked or altered
 Mirror Image

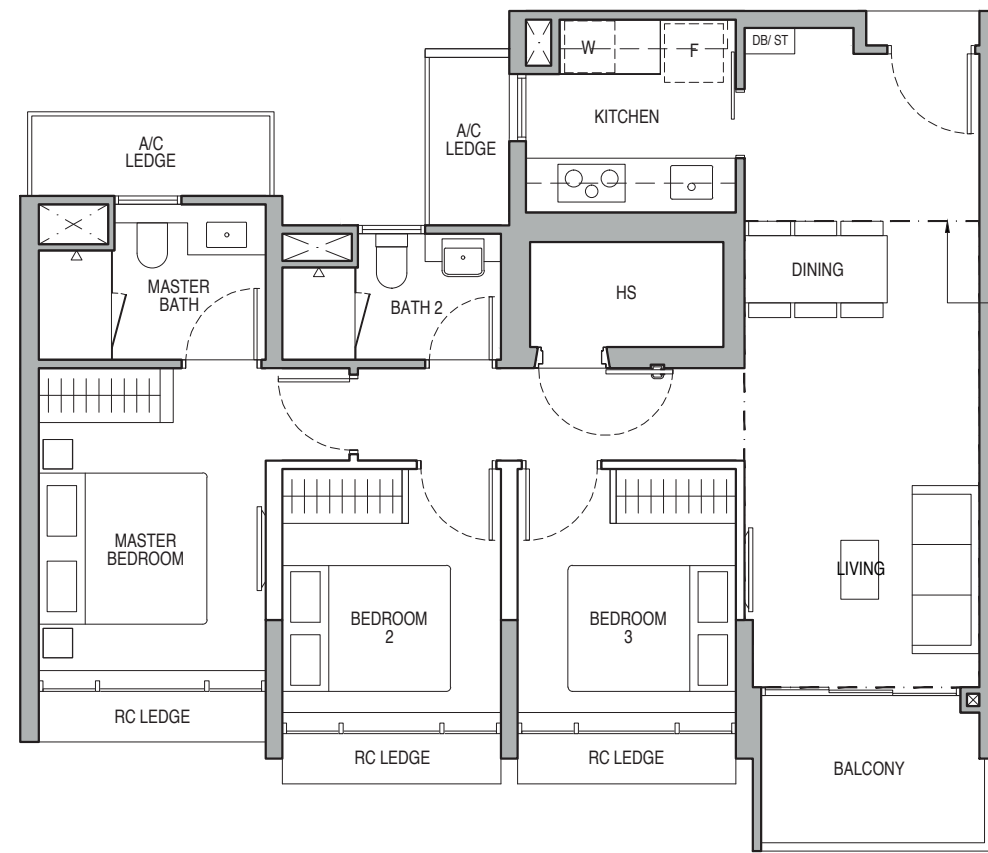
Area includes air-conditioner (A/C) ledge, balcony and strata void area where applicable. The plans are subject to change as may be approved by relevant authorities. All floor plans are approximate measurements only and are subject to government re-survey. The balcony shall not be enclosed unless with the approved balcony screen. For an illustration of the approved balcony screen, please refer to the diagram annexed hereto as "Annexure A".



3-BEDROOM DELUXE

Type B4

90 sq m / 969 sq ft
BLK 55 : #06-12 to #13-12



Type B4-PH

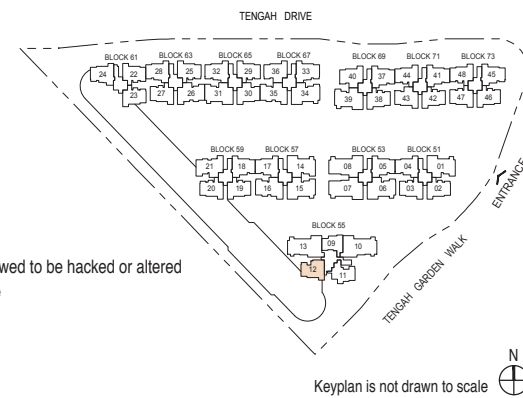
106 sq m / 1141 sq ft
BLK 55 : #14-12
Including strata void area of 16 sq m / 172 sq ft above living and dining with 4.5m floor to ceiling height

DOTTED LINE DENOTES STRATA VOID AREA OF 16 SQ M / 172 SQ FT ABOVE LIVING AND DINING FOR TYPE B4-PH



PES - Private Enclosed Space
W - Washer/Dryer (not included)
WC - Water Closet
HS - Household Shelter
DB/ST - Distribution Board/Storage
RC - Reinforced Concrete
F - Fridge (not included)
A/C - Air-Conditioner
Wall not allowed to be hacked or altered
Mirror Image

Area includes air-conditioner (A/C) ledge, balcony and strata void area where applicable. The plans are subject to change as may be approved by relevant authorities. All floor plans are approximate measurements only and are subject to government re-survey. The balcony shall not be enclosed unless with the approved balcony screen. For an illustration of the approved balcony screen, please refer to the diagram annexed hereto as "Annexure A".



3-BEDROOM PREMIUM

Type B5

93 sq m / 1001 sq ft
BLK 65 : #02-30 to #13-30
BLK 67 : #02-36 to #13-36
BLK 69 : #02-40 to #13-40
BLK 71 : #02-43* to #13-43*

DOTTED LINE DENOTES WALL FOR #01-30 to #14-30

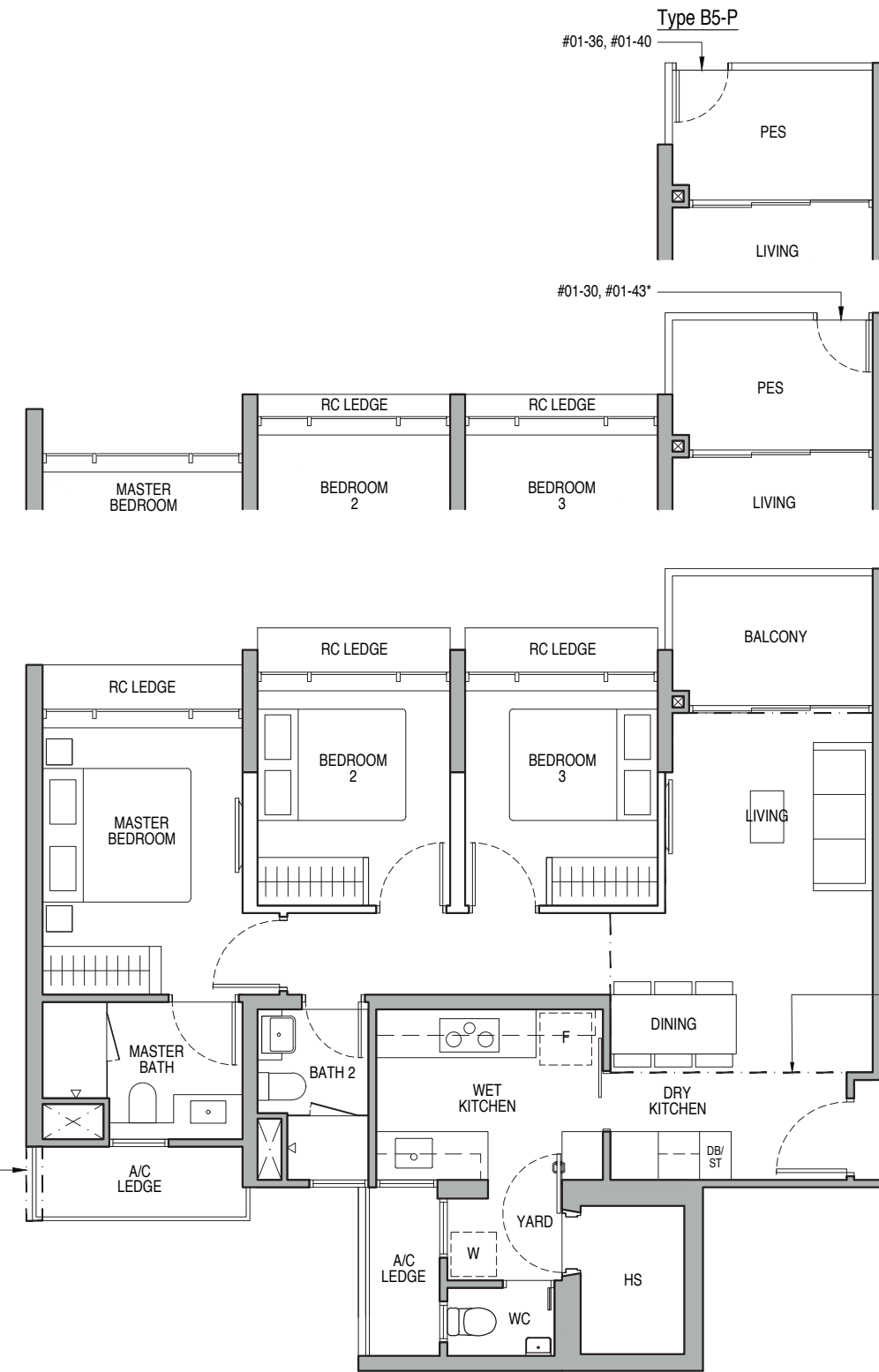


PES - Private Enclosed Space
W - Washer/Dryer (not included)
WC - Water Closet
HS - Household Shelter
DB/ST - Distribution Board/Storage
RC - Reinforced Concrete
F - Fridge (not included)
A/C - Air-Conditioner
Wall not allowed to be hacked or altered
Mirror Image

Area includes air-conditioner (A/C) ledge, balcony and strata void area where applicable. The plans are subject to change as may be approved by relevant authorities. All floor plans are approximate measurements only and are subject to government re-survey. The balcony shall not be enclosed unless with the approved balcony screen. For an illustration of the approved balcony screen, please refer to the diagram annexed hereto as "Annexure A".

Type B5-P

93 sq m / 1001 sq ft
BLK 65 : #01-30
BLK 67 : #01-36
BLK 69 : #01-40
BLK 71 : #01-43*

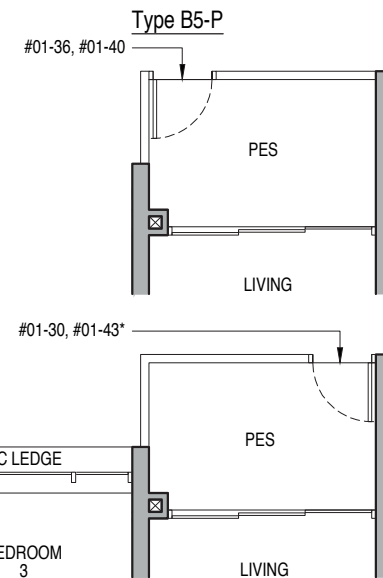


DOTTED LINE DENOTES STRATA VOID AREA OF 17 SQ M / 183 SQ FT ABOVE LIVING AND DINING FOR TYPE B5-PH



Type B5-PH

110 sq m / 1184 sq ft
BLK 65 : #14-30
BLK 67 : #14-36
BLK 69 : #14-40
BLK 71 : #14-43*
Including strata void area of 17 sq m / 183 sq ft above living and dining with 4.5m floor to ceiling height



3-BEDROOM PREMIUM

3-BEDROOM PREMIUM

Type B6

94 sq m / 1012 sq ft

- BLK 51 : #02-04* to #13-04*
- BLK 53 : #02-05 to #13-05
- BLK 57 : #02-17* to #13-17*
- BLK 59 : #02-18 to #13-18
- BLK 63 : #02-28* to #13-28*
- BLK 65 : #02-32* to #13-32*
- BLK 67 : #02-33 to #13-33
- BLK 69 : #02-37 to #13-37
- BLK 71 : #02-41 to #13-41
- BLK 73 : #02-45 to #13-45

Type B6-P

94 sq m / 1012 sq ft

- BLK 51 : #01-04*
- BLK 53 : #01-05
- BLK 57 : #01-17*
- BLK 59 : #01-18
- BLK 63 : #01-28*
- BLK 65 : #01-32*
- BLK 67 : #01-33
- BLK 69 : #01-37
- BLK 71 : #01-41
- BLK 73 : #01-45

Type B6-PH

110 sq m / 1184 sq ft

- BLK 51 : #14-04*
- BLK 53 : #14-05
- BLK 57 : #14-17*
- BLK 59 : #14-18
- BLK 63 : #14-28*
- BLK 65 : #14-32*
- BLK 67 : #14-33
- BLK 69 : #14-37
- BLK 71 : #14-41
- BLK 73 : #14-45

Type B7

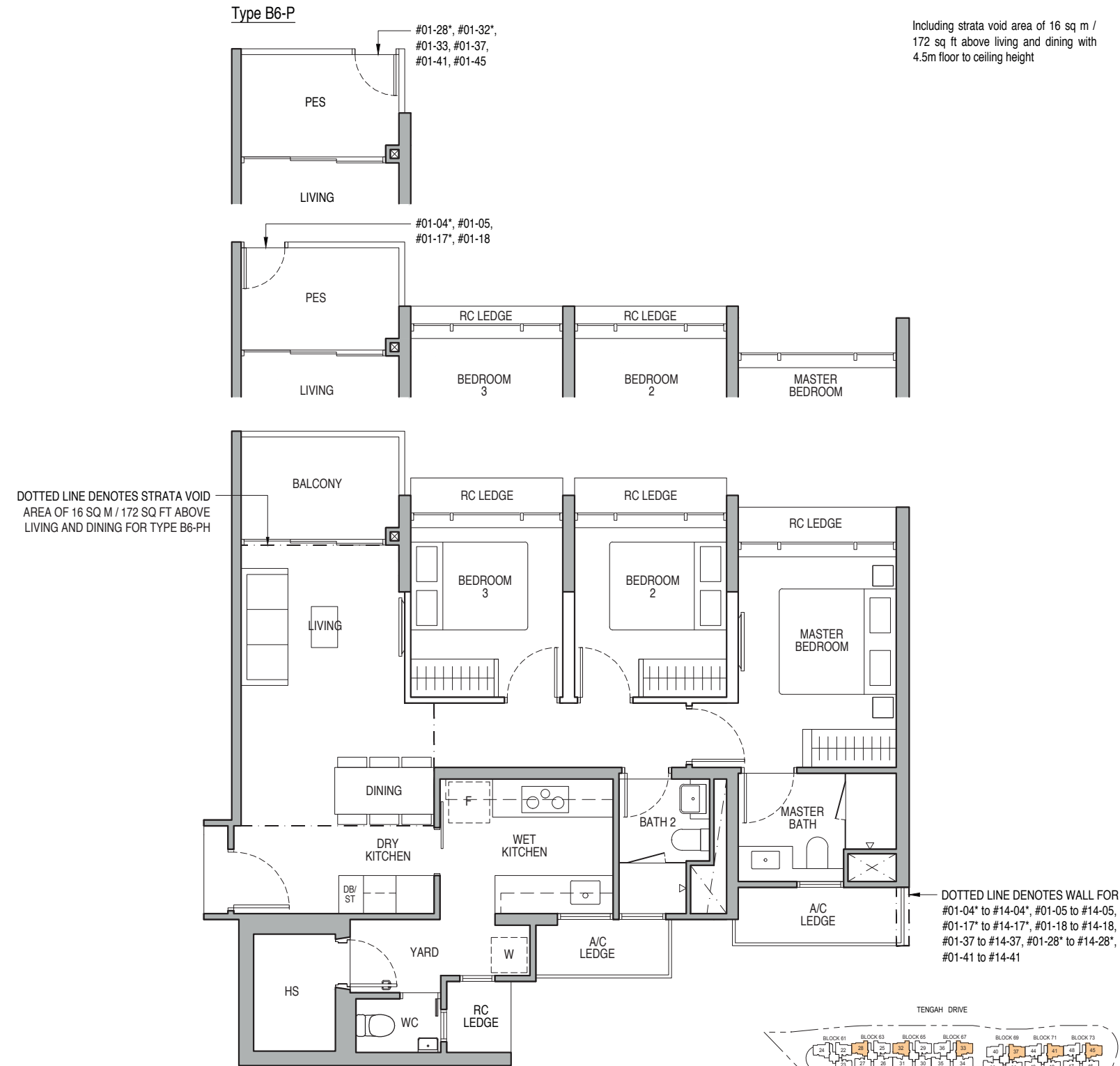
94 sq m / 1012 sq ft

- BLK 61 : #06-24 to #13-24

Type B7-PH

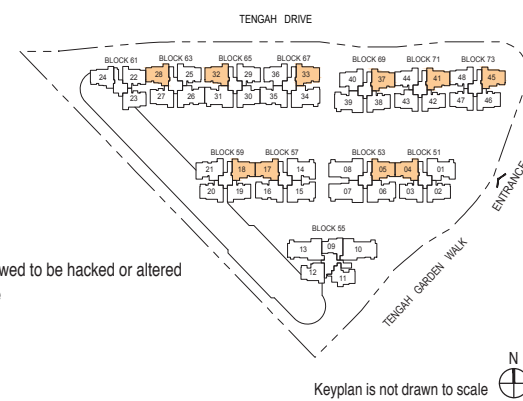
110 sq m / 1184 sq ft

- BLK 61 : #14-24
- Including strata void area of 16 sq m / 172 sq ft above living and dining with 4.5m floor to ceiling height

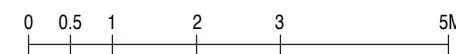
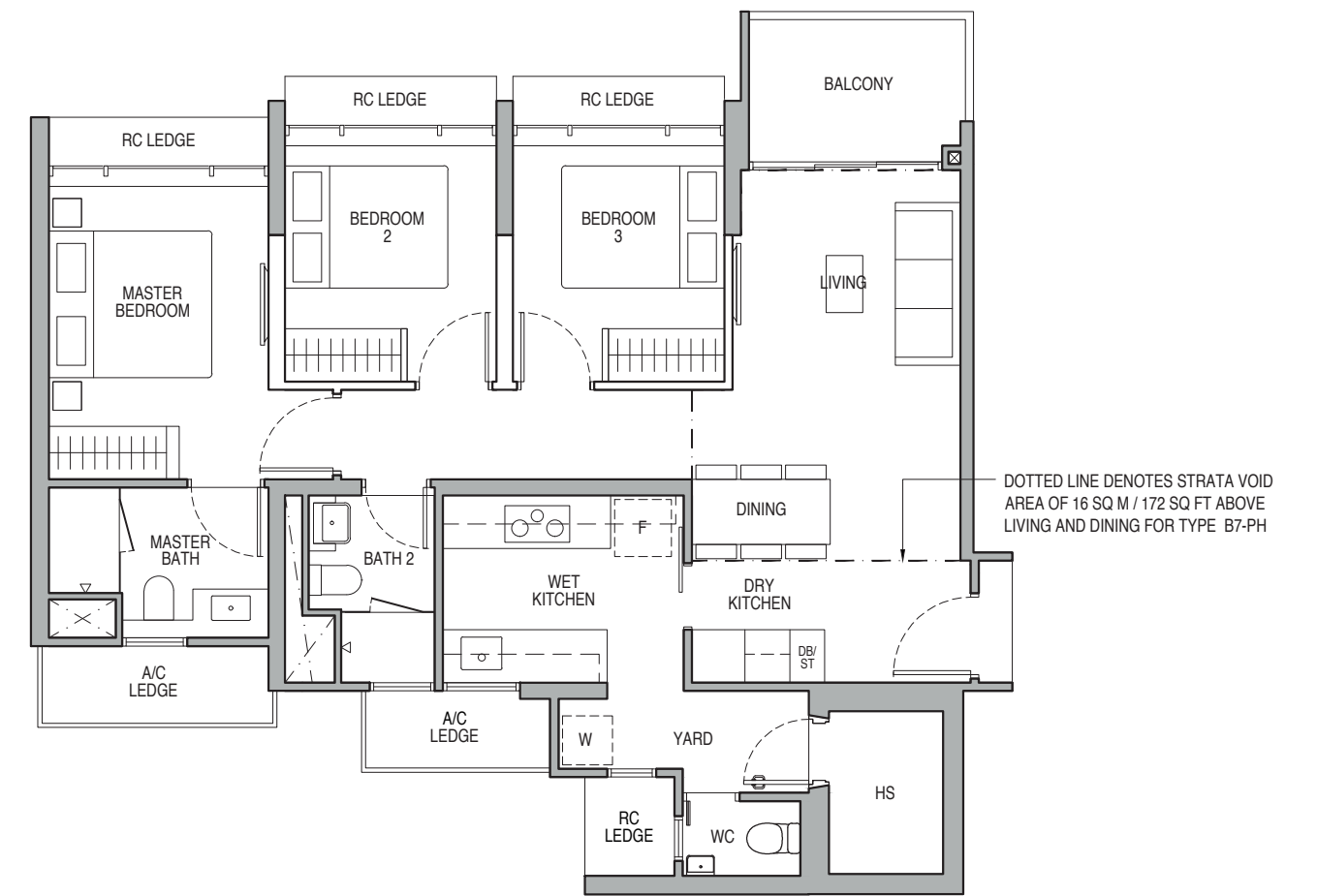


- PES - Private Enclosed Space
- W - Washer/Dryer (not included)
- WC - Water Closet
- HS - Household Shelter
- DB/ST - Distribution Board/Storage
- RC - Reinforced Concrete
- F - Fridge (not included)
- A/C - Air-Conditioner
- Wall not allowed to be hacked or altered
- Mirror Image

Area includes air-conditioner (A/C) ledge, balcony and strata void area where applicable. The plans are subject to change as may be approved by relevant authorities. All floor plans are approximate measurements only and are subject to government re-survey. The balcony shall not be enclosed unless with the approved balcony screen. For an illustration of the approved balcony screen, please refer to the diagram annexed hereto as "Annexure A".

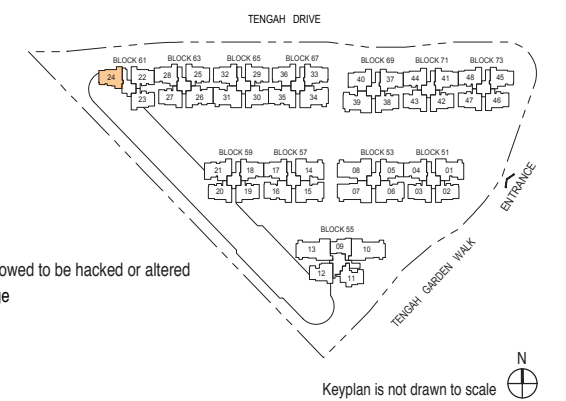


Keyplan is not drawn to scale



- PES - Private Enclosed Space
- W - Washer/Dryer (not included)
- WC - Water Closet
- HS - Household Shelter
- DB/ST - Distribution Board/Storage
- RC - Reinforced Concrete
- F - Fridge (not included)
- A/C - Air-Conditioner
- Wall not allowed to be hacked or altered
- Mirror Image

Area includes air-conditioner (A/C) ledge, balcony and strata void area where applicable. The plans are subject to change as may be approved by relevant authorities. All floor plans are approximate measurements only and are subject to government re-survey. The balcony shall not be enclosed unless with the approved balcony screen. For an illustration of the approved balcony screen, please refer to the diagram annexed hereto as "Annexure A".



Keyplan is not drawn to scale

4-BEDROOM DELUXE

Type C1

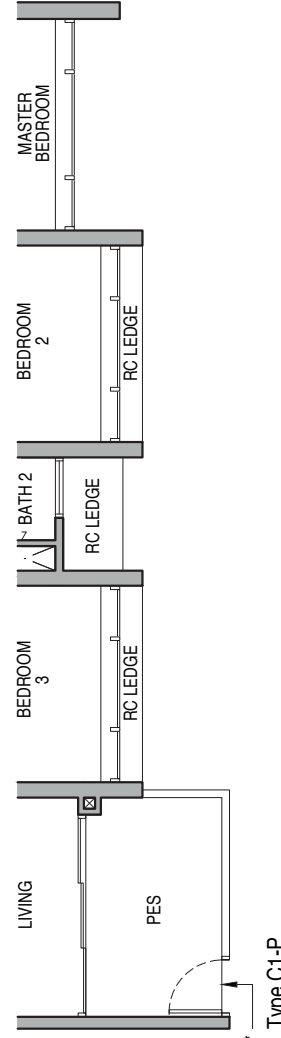
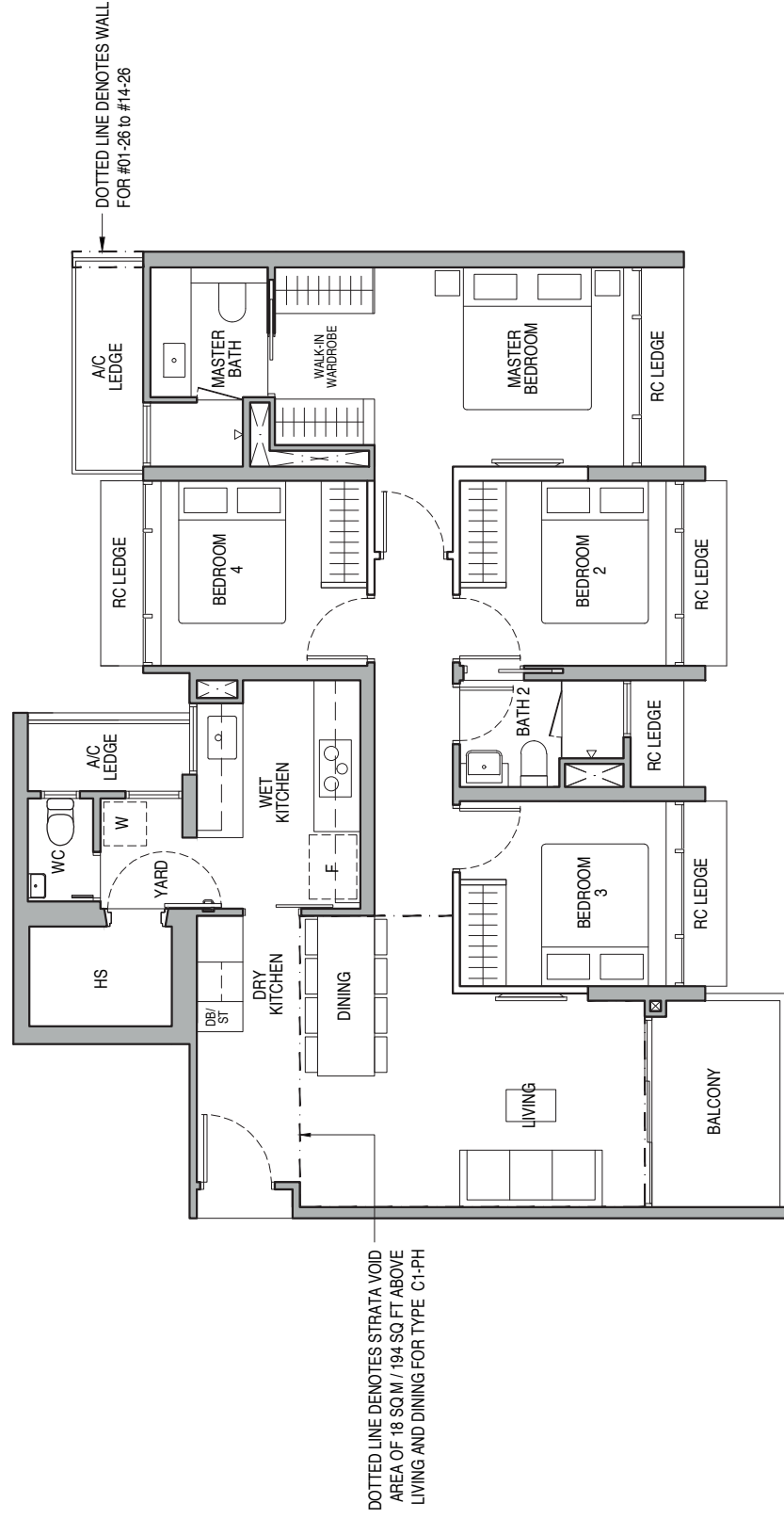
110 sq m / 1184 sq ft

BLK 59 : #06-21 to #13-21
BLK 63 : #02-26 to #13-26
BLK 67 : #02-35* to #13-35*

Type C1-P

110 sq m / 1184 sq ft

BLK 63 : #01-26
BLK 67 : #01-35*

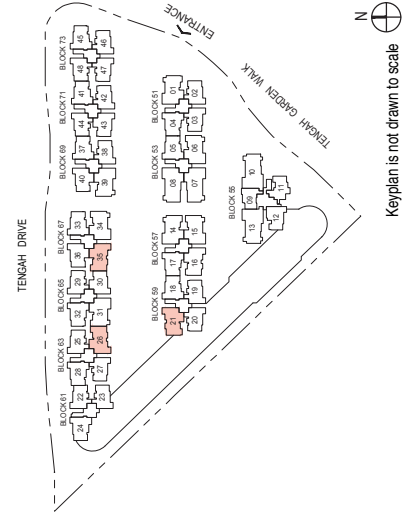


0 0.5 1 2 5M

Wall not allowed to be tracked or altered
Mirror Image

P.E.S. - Private Enclosed Space
W - Washer/Dryer (not included)
WC - Water Closet
HS - Household Shelter
DBST - Distribution Board/Storage
RC - Reinforced Concrete
F - Fridge (not included)
AC - Air-Conditioner

Area includes air-conditioner (AC) ledge, balcony and strata void area where applicable. The plans are subject to change as may be approved by relevant authorities. All floor plans are approximate measurements only and are subject to government re-survey. The balcony shall not be enclosed unless with the approved balcony screen. For an illustration of the approved balcony screen, please refer to the diagram annexed hereto as 'Annexure A'.



Type C1-PH

128 sq m / 1378 sq ft

BLK 59 : #14-21
BLK 63 : #14-26
BLK 67 : #14-35*

Including strata void area of 18 sq m / 194 sq ft above living and dining with 4.5m floor to ceiling height

Type C2

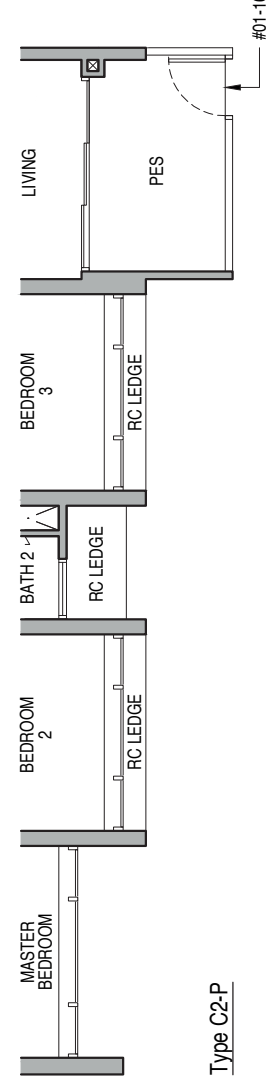
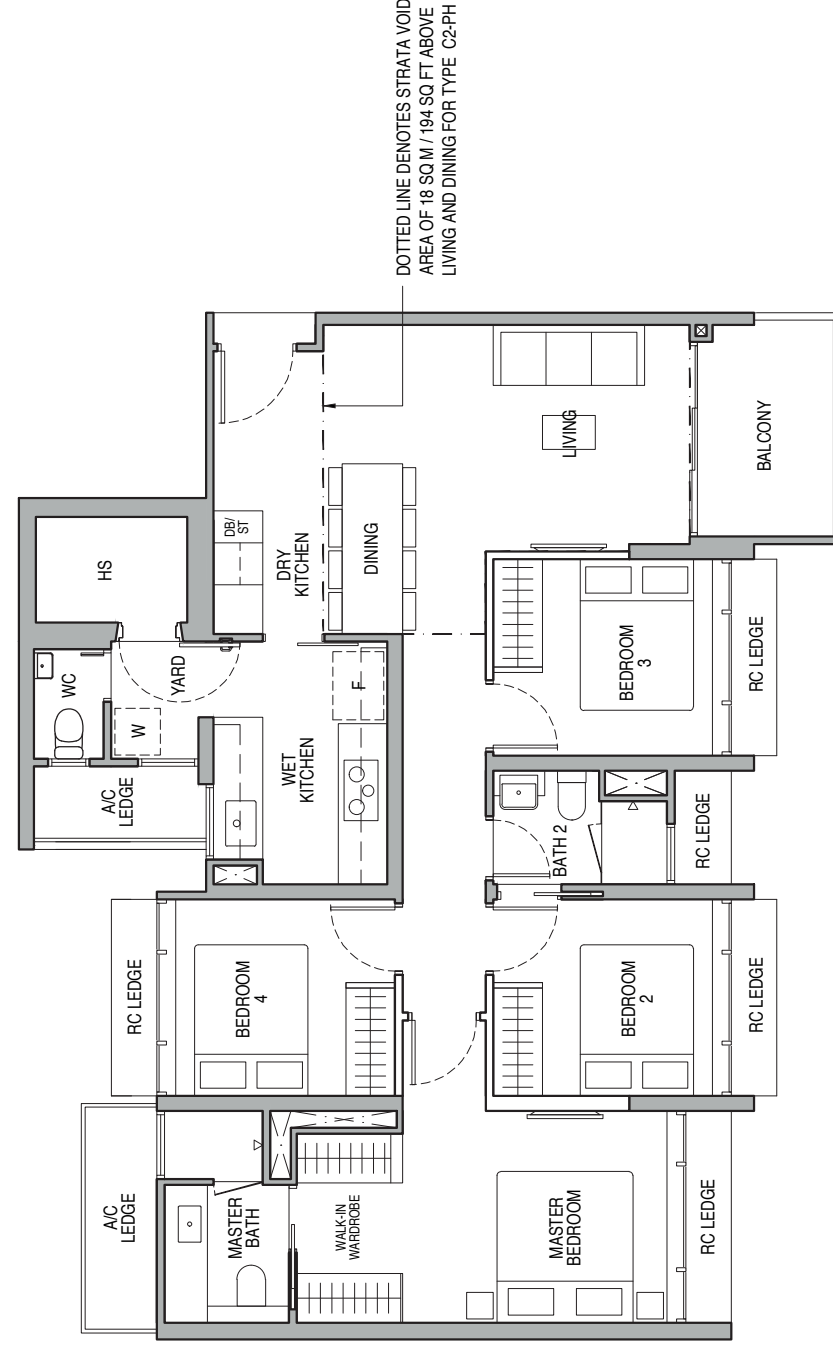
110 sq m / 1184 sq ft

BLK 57 : #02-16 to #13-16

Type C2-P

110 sq m / 1184 sq ft

BLK 57 : #01-16



0 0.5 1 2 5M

Wall not allowed to be tracked or altered
Mirror Image

P.E.S. - Private Enclosed Space
W - Washer/Dryer (not included)
WC - Water Closet
HS - Household Shelter
DBST - Distribution Board/Storage
RC - Reinforced Concrete
F - Fridge (not included)
AC - Air-Conditioner

Area includes air-conditioner (AC) ledge, balcony and strata void area where applicable. The plans are subject to change as may be approved by relevant authorities. All floor plans are approximate measurements only and are subject to government re-survey. The balcony shall not be enclosed unless with the approved balcony screen. For an illustration of the approved balcony screen, please refer to the diagram annexed hereto as 'Annexure A'.



4-BEDROOM PREMIUM

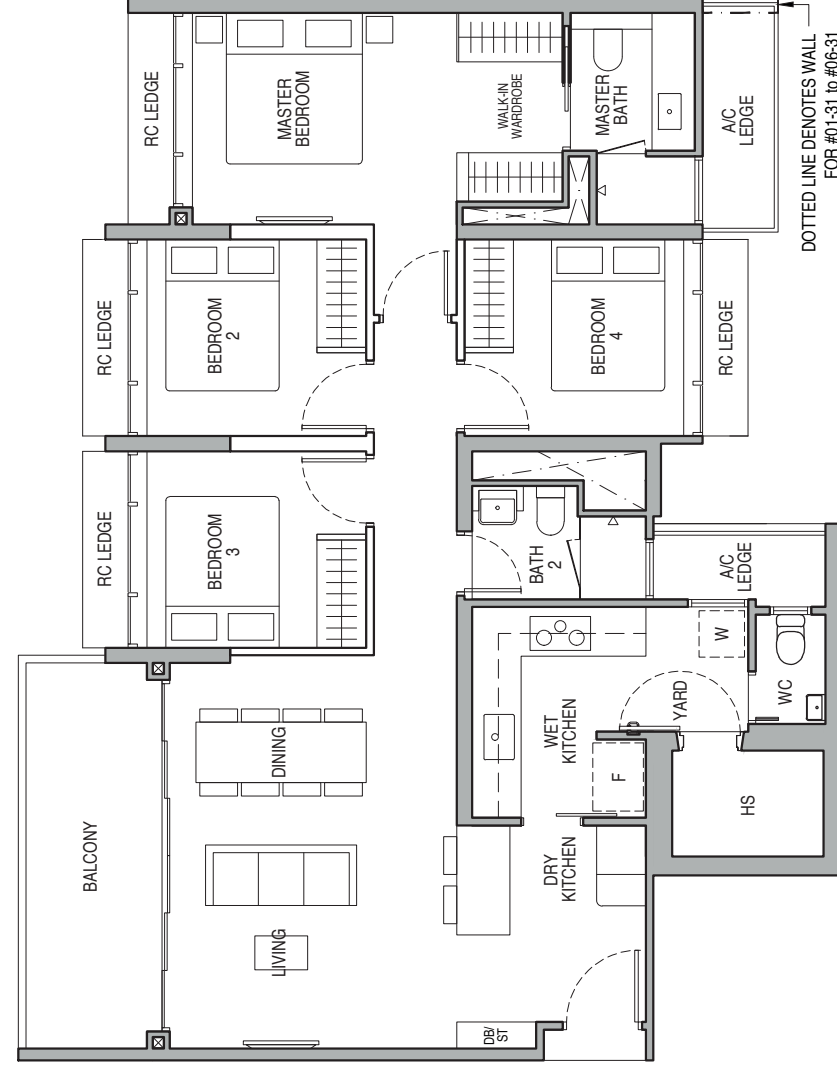
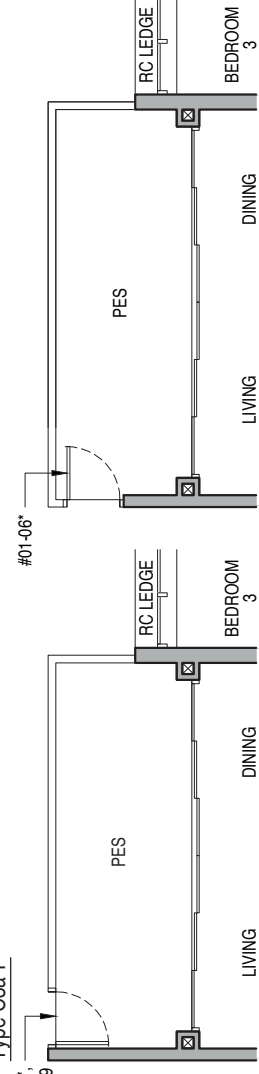
Type C3a

117 sq m / 1259 sq ft

- BLK 51 : #02-01 to #06-01
- BLK 53 : #02-06* to #06-06*
- BLK 57 : #02-14 to #06-14, #02-15* to #06-15*
- BLK 65 : #02-31 to #06-31
- BLK 67 : #02-34* to #06-34*
- BLK 69 : #02-39 to #06-39

Type C3a-P

- #01-01, #01-14, #01-15*, #01-31, #01-34*, #01-39



0 0.5 1 2 5M

- Wall not allowed to be tracked or altered
- Mirror Image

- P.E.S. - Private Enclosed Space
- W - Washer/Dryer (not included)
- WC - Water Closet
- HS - Household Shelter
- DB/ST - Distribution Board/Storage
- RC - Reinforced Concrete
- F - Fridges (not included)
- AC - Air-Conditioner

Area includes air-conditioner (A/C) ledge, balcony and strata void area where applicable. The plans are subject to change as may be approved by relevant authorities. All floor plans are approximate measurements only and are subject to government re-survey. The balcony shall not be enclosed unless with the approved balcony screen. For an illustration of the approved balcony screen, please refer to the diagram annexed hereto as 'Annexure A'.



Keyplan is not drawn to scale

Type C3a-P

117 sq m / 1259 sq ft

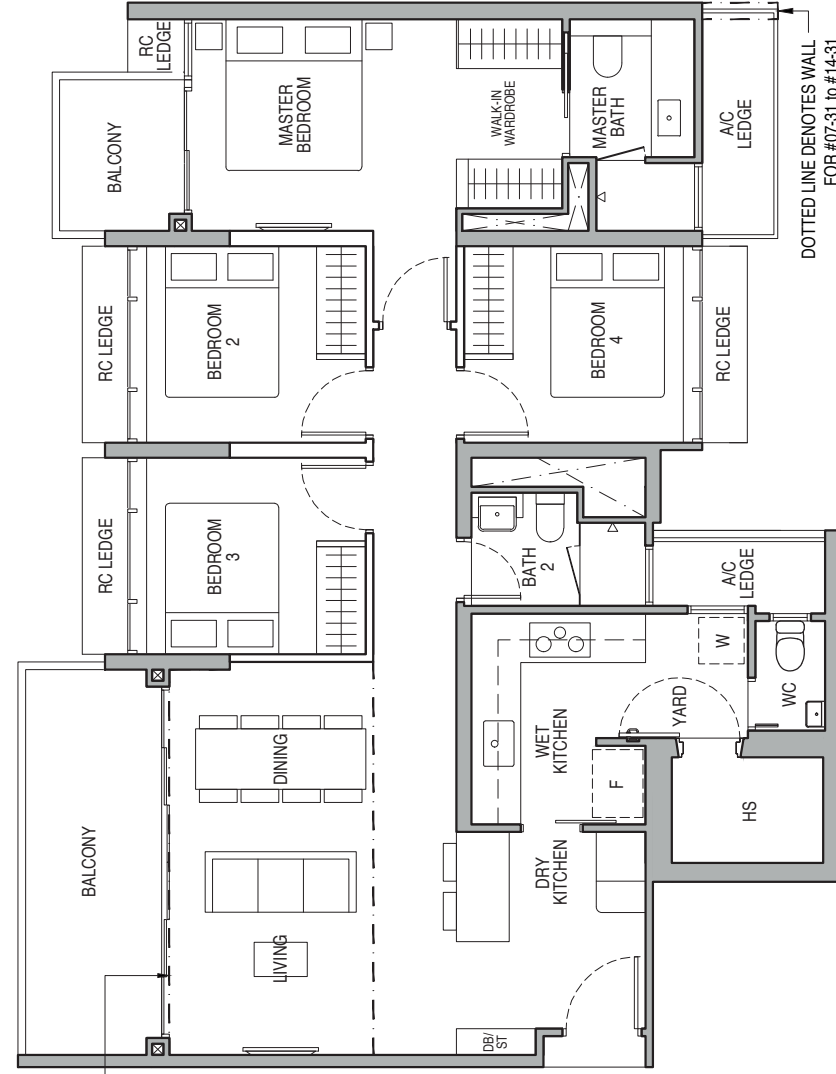
- BLK 51 : #01-01
- BLK 53 : #01-06*
- BLK 57 : #01-14, #01-15*
- BLK 65 : #01-31
- BLK 67 : #01-34*
- BLK 69 : #01-39

4-BEDROOM PREMIUM

Type C3b

120 sq m / 1292 sq ft

- BLK 51 : #07-01 to #13-01
- BLK 53 : #07-06* to #13-06*
- BLK 57 : #07-14 to #13-14, #07-15* to #13-15*
- BLK 65 : #07-31 to #13-31
- BLK 67 : #07-34* to #13-34*
- BLK 69 : #07-39 to #13-39



DOTTED LINE DENOTES STRATA VOID AREA OF 15 SQ.M/161 SQ.FT ABOVE LIVING AND DINING FOR TYPE C3b-PH

0 0.5 1 2 5M

- Wall not allowed to be tracked or altered
- Mirror Image

- P.E.S. - Private Enclosed Space
- W - Washer/Dryer (not included)
- WC - Water Closet
- HS - Household Shelter
- DB/ST - Distribution Board/Storage
- RC - Reinforced Concrete
- F - Fridges (not included)
- AC - Air-Conditioner

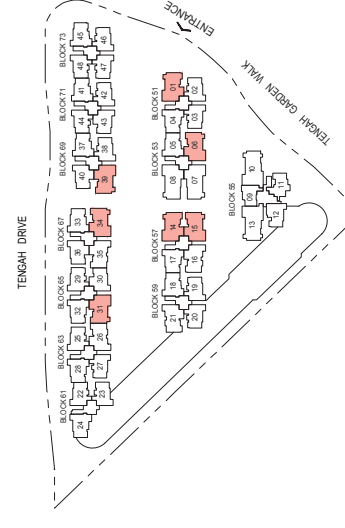
Area includes air-conditioner (A/C) ledge, balcony and strata void area where applicable. The plans are subject to change as may be approved by relevant authorities. All floor plans are approximate measurements only and are subject to government re-survey. The balcony shall not be enclosed unless with the approved balcony screen. For an illustration of the approved balcony screen, please refer to the diagram annexed hereto as 'Annexure A'.

Type C3b-PH

135 sq m / 1453 sq ft

- BLK 51 : #14-01
- BLK 53 : #14-06*
- BLK 57 : #14-14, #14-15*
- BLK 65 : #14-31
- BLK 67 : #14-34*
- BLK 69 : #14-39

Including strata void area of 15 sq m / 161 sq ft above living and dining with 4.5m floor to ceiling height



Keyplan is not drawn to scale

5-BEDROOM PREMIUM

Type D1

141 sq m / 1518 sq ft

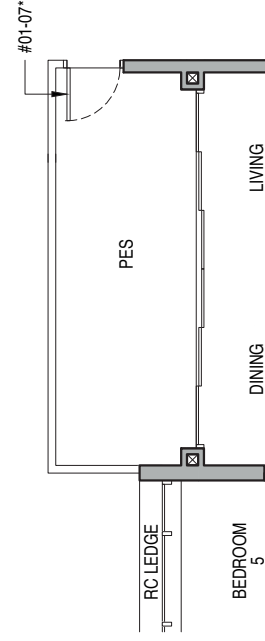
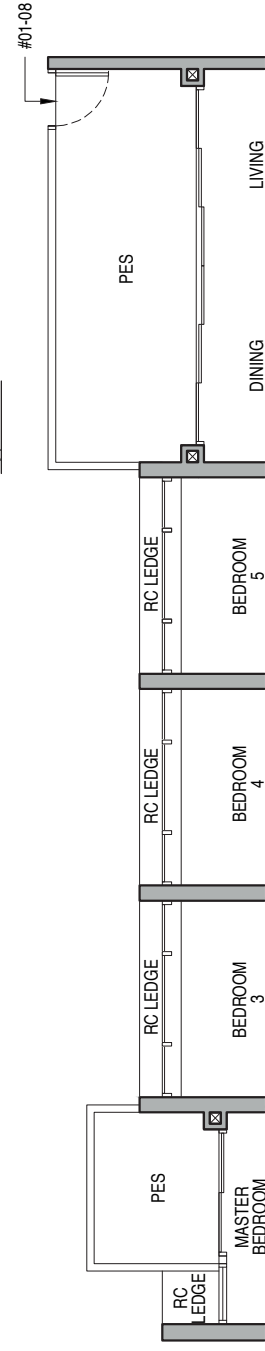
BLK 53 : #02-07* to #13-07*, #02-08 to #13-08

Type D1-P

141 sq m / 1518 sq ft

BLK 53 : #01-07*, #01-08

Type D1-P

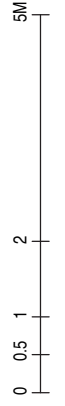
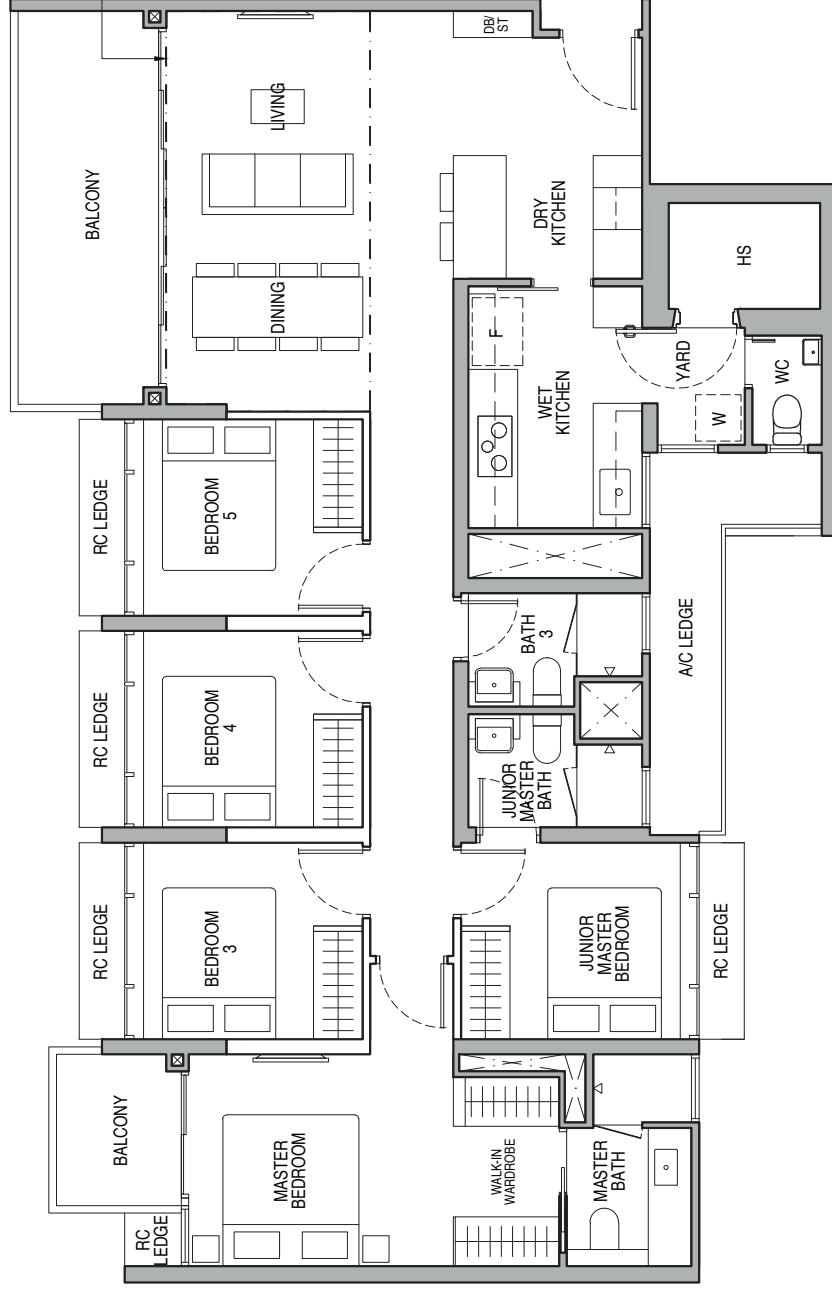
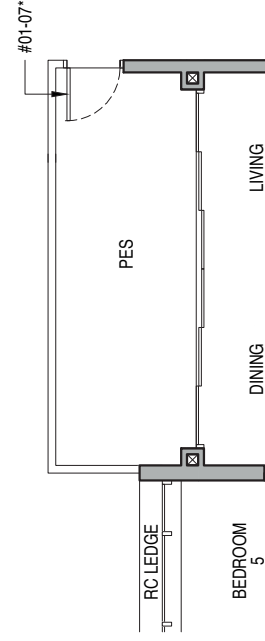


Type D1-PH

156 sq m / 1679 sq ft

BLK 53 : #14-07*, #14-08

Including strata void area of 15 sq m / 161 sq ft above living and dining with 4.5m floor to ceiling height



Wall not allowed to be tracked or altered
Mirror Image

P.E.S. - Private Enclosed Space
W - Washer/Dryer (not included)

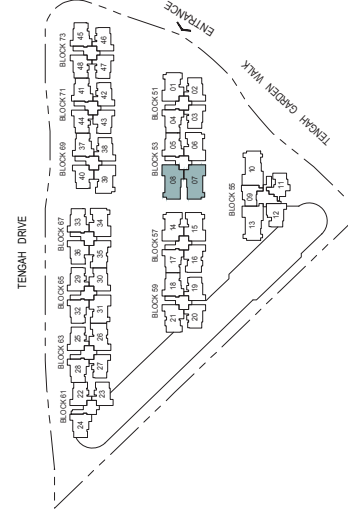
WC - Water Closet
HS - Household Shelter

DBIST - Distribution Board/Storage
RC - Reinforced Concrete

F - Fridge (not included)
AC - Air-Conditioner

Area includes air-conditioner (AC) ledge, balcony and strata void area where applicable. The plans are subject to change as may be approved by relevant authorities. All floor plans are approximate measurements only and are subject to government re-survey. The balcony shall not be enclosed unless with the approved balcony screen. For an illustration of the approved balcony screen, please refer to the diagram annexed hereto as 'Annexure A'.

Keyplan is not drawn to scale



5-BEDROOM PREMIUM

Type D2

145 sq m / 1561 sq ft

BLK 55 : #02-10 to #13-10, #02-13* to #13-13*

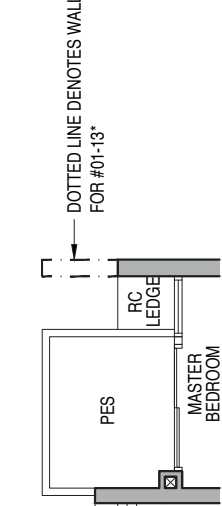
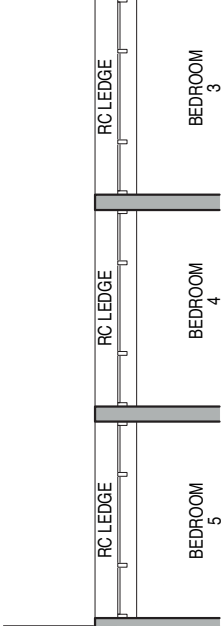
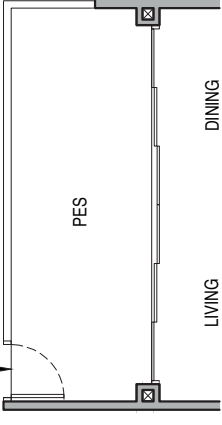
Type D2-P

145 sq m / 1561 sq ft

BLK 55 : #01-10, #01-13*

Type D2-P

#01-10, #01-13*



Wall not allowed to be tracked or altered
Mirror Image

P.E.S. - Private Enclosed Space
W - Washer/Dryer (not included)

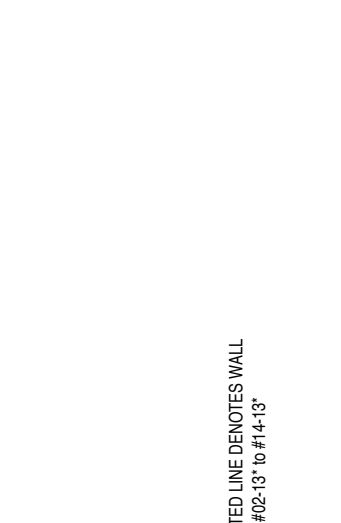
WC - Water Closet
HS - Household Shelter

DBIST - Distribution Board/Storage
RC - Reinforced Concrete

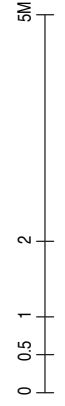
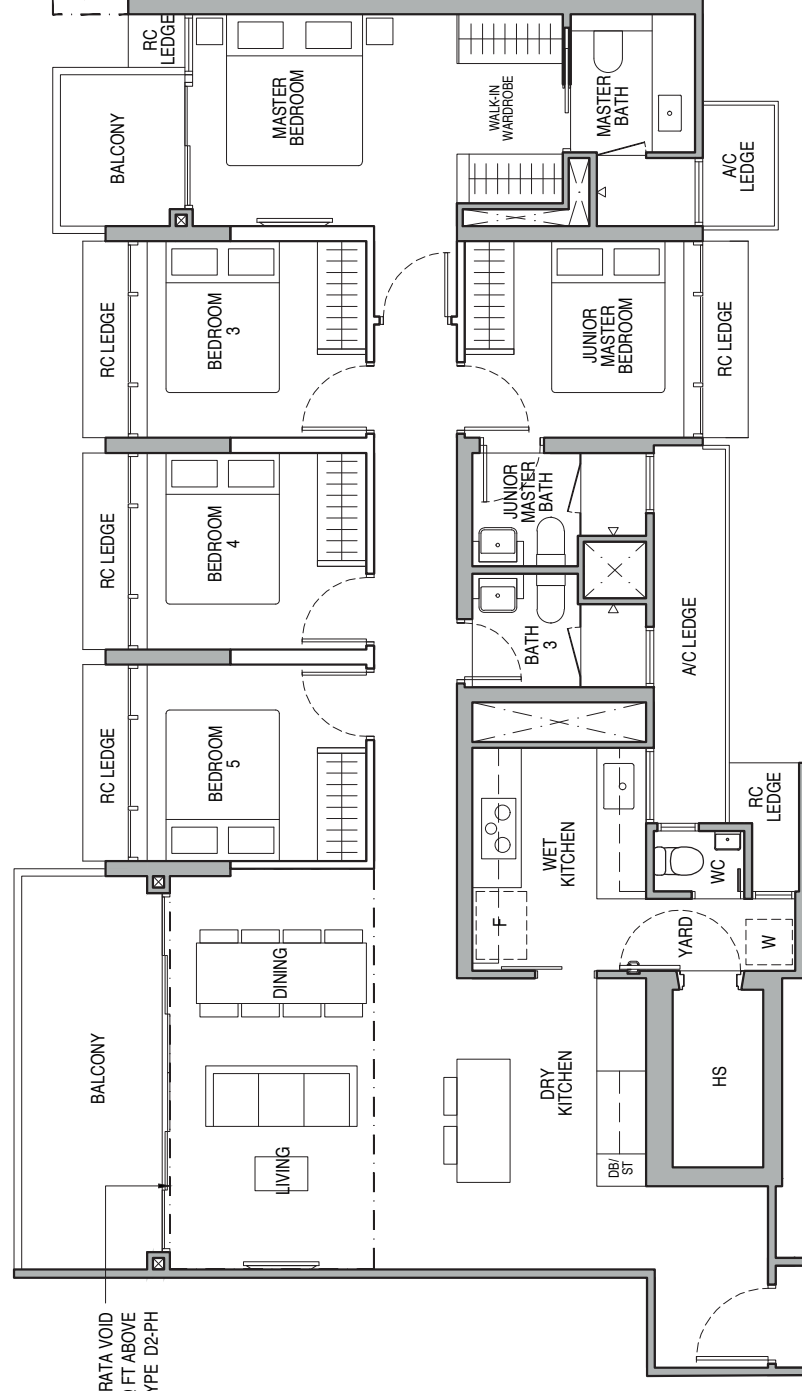
F - Fridge (not included)
AC - Air-Conditioner

Area includes air-conditioner (AC) ledge, balcony and strata void area where applicable. The plans are subject to change as may be approved by relevant authorities. All floor plans are approximate measurements only and are subject to government re-survey. The balcony shall not be enclosed unless with the approved balcony screen. For an illustration of the approved balcony screen, please refer to the diagram annexed hereto as 'Annexure A'.

Keyplan is not drawn to scale



DOTTED LINE DENOTES STRATA VOID AREA OF 15 SQ M / 161 SQ FT ABOVE LIVING AND DINING FOR TYPE D2-PH



Wall not allowed to be tracked or altered
Mirror Image

P.E.S. - Private Enclosed Space
W - Washer/Dryer (not included)

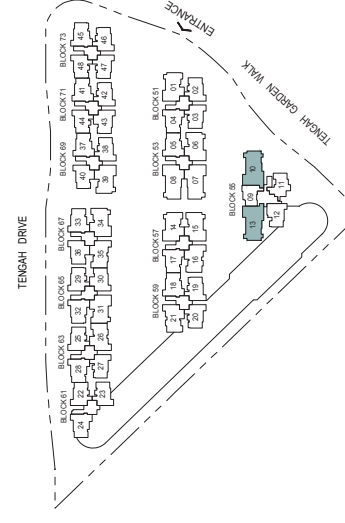
WC - Water Closet
HS - Household Shelter

DBIST - Distribution Board/Storage
RC - Reinforced Concrete

F - Fridge (not included)
AC - Air-Conditioner

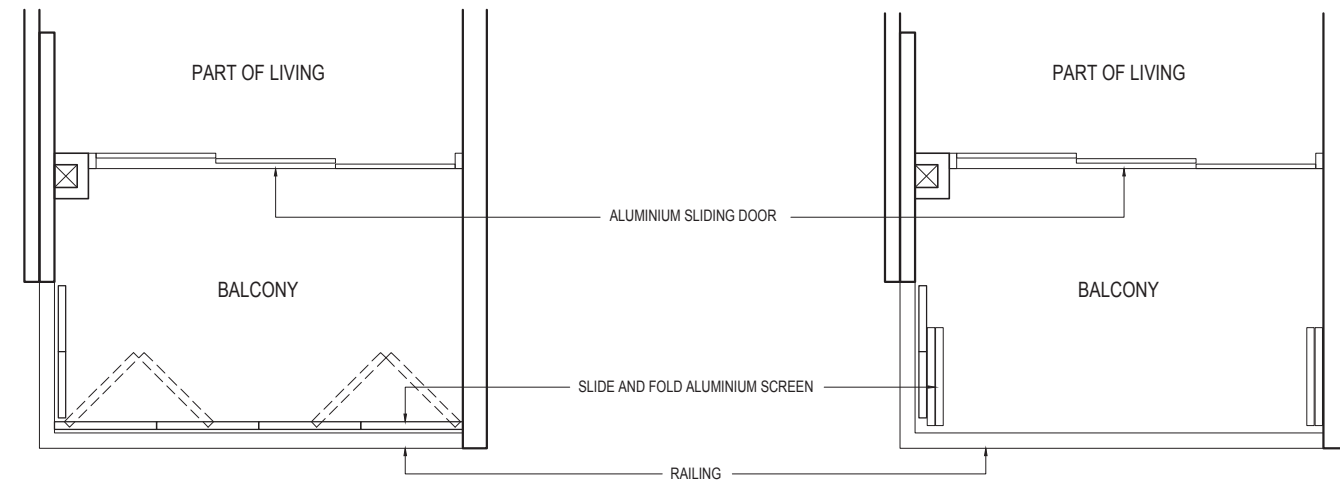
Area includes air-conditioner (AC) ledge, balcony and strata void area where applicable. The plans are subject to change as may be approved by relevant authorities. All floor plans are approximate measurements only and are subject to government re-survey. The balcony shall not be enclosed unless with the approved balcony screen. For an illustration of the approved balcony screen, please refer to the diagram annexed hereto as 'Annexure A'.

Keyplan is not drawn to scale



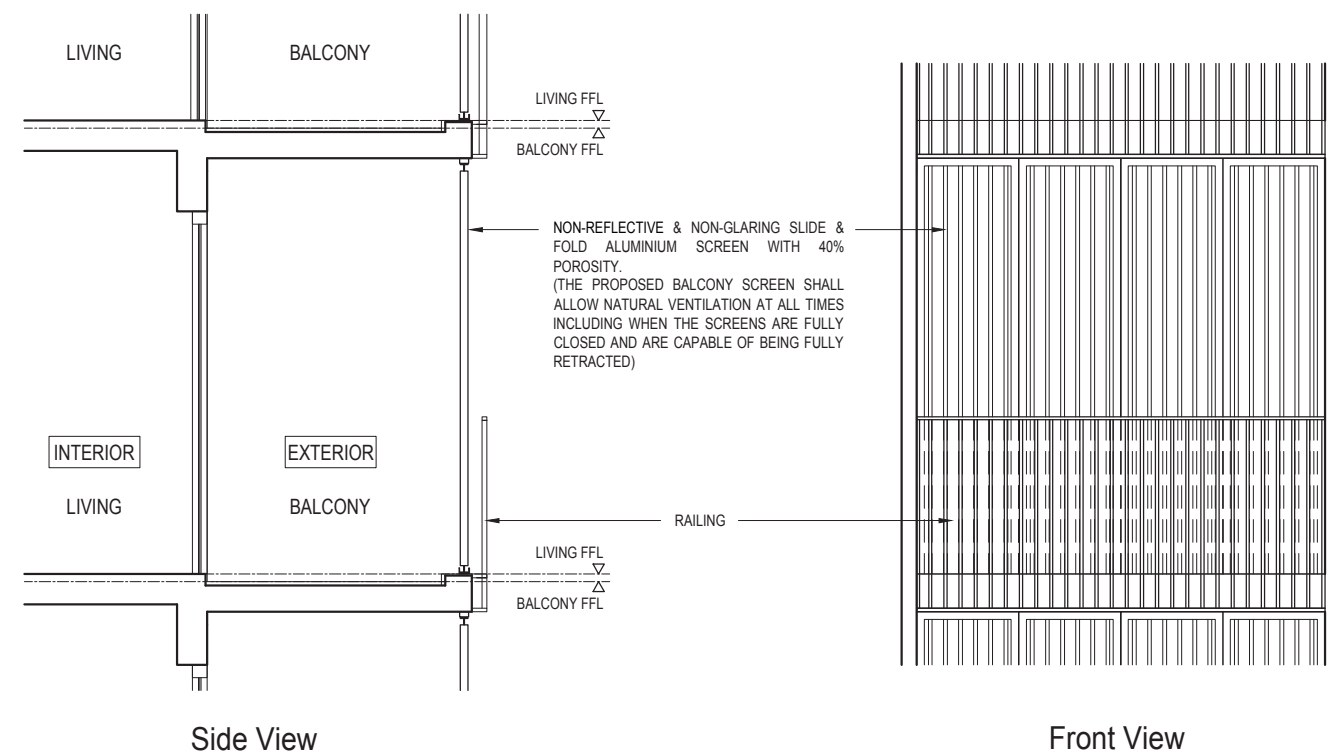
Annexure A

Approved Typical Balcony Screen



Typical Retractable Balcony Screen (Fully Closed) - Plan

Typical Retractable Balcony Screen (Fully Retracted) - Plan



Side View

Front View

Note:
The balcony shall not be enclosed unless with the approved balcony screen as shown above.
The cost of screen and installation shall be borne by the Purchaser.
Where required to facilitate installation, the Architect reserves the right to determine appropriate details not limited to fixing details and colour tones.

JOINTLY DEVELOPED BY



CanningHill Piers Artist's impression



Leedon Green Artist's impression

City Developments Limited (CDL) is a leading global real estate company with a network spanning 104 locations in 29 countries and regions. Listed on the Singapore Exchange, the Group is one of the largest companies by market capitalisation. Its income-stable and geographically diverse portfolio comprises residences, offices, hotels, serviced apartments, retail malls and integrated developments.

With over 55 years in real estate development, investment and management, the Group has developed over 48,000 homes and owns around 23 million square feet of gross floor area in residential for lease, commercial and hospitality assets globally.

CDL's portfolio of luxury homes includes New Futura, Gramercy Park, Boulevard 88, Irwell Hill Residences and CanningHill Piers.

Established in 1963, MCL Land is a member of the Jardine Matheson Group under Hongkong Land Holdings. As a leading residential developer with a legacy of consistently building quality developments in Singapore and Malaysia, MCL Land continues to evolve with practical and innovative residential solutions whilst providing investment assets with long-term sustainable value.

Its more recent remarkable developments include Leedon Green, Parc Esta, Margaret Ville, Lake Grande and Sol Acres.



Piccadilly Grand Artist's impression

In 2022, CDL and MCL Land collaborated in a first-ever joint venture to develop Piccadilly Grand, a new city fringe integrated development directly linked to Farrer Park MRT. The successful launch of the development has since seen it become a coveted property offering both luxe living and conveniences at its doorstep.