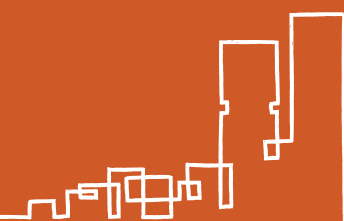




FLOOR PLANS

**TIMELESS. CHIC.  
HERITAGE-INSPIRED.**

Inspired by the low-rise estates of yesteryear, Leven offers a contemporary take on the architectural style of classic walk-up flats with the modern convenience of a lift. A nod to nostalgia, these heritage-inspired homes are envisioned for those who enjoy life with that touch of difference. This is limited-edition living with just 21 exclusive units.



# SITE PLAN

## SREEN

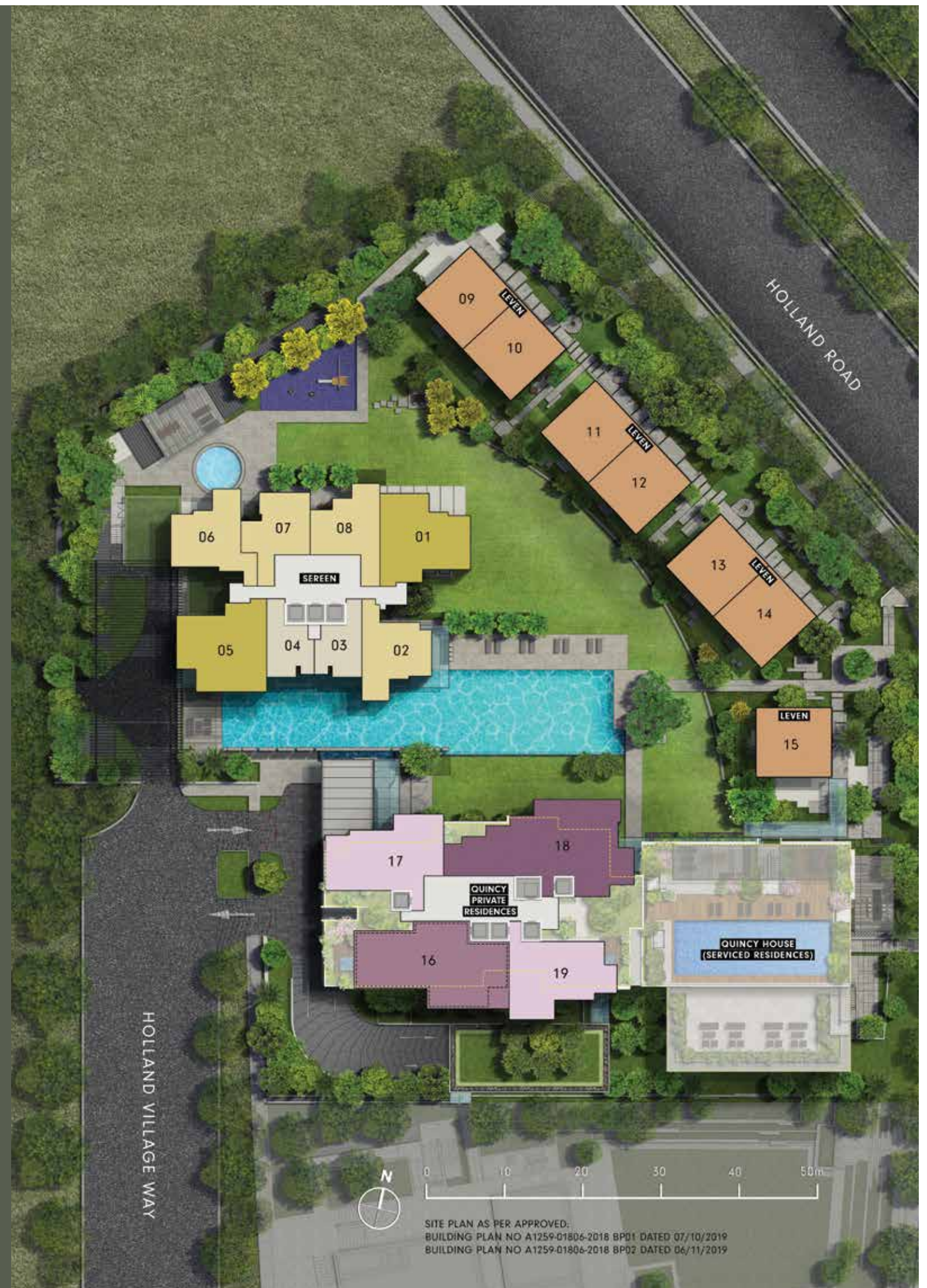
- 3-BEDROOM
- 2-BEDROOM
- 1-BEDROOM

## QUINCY PRIVATE RESIDENCES

- 4-BEDROOM
- 3-BEDROOM
- 3-BEDROOM + STUDY (LEVEL 21 TO 23)
- 4-BEDROOM + STUDY DUPLEX (LEVEL 24 TO 27)

## LEVEN

- 2-BEDROOM



# SCHEMATIC DIAGRAM

## 1 HOLLAND VILLAGE WAY (SEREEN)

STOREY/ HOUSE NO.	#06	#07	#08	#01	#02	#03	#04	#05
34	TENNIS COURT							
33	L33 FACILITIES							
32	B4	B1	B2	C1	B3	A2	A1	C2
31	B4	B1	B2	C1	B3	A2	A1	C2
30	B4	B1	B2	C1	B3	A2	A1	C2
29	B4	B1	B2	C1	B3	A2	A1	C2
28	B4	B1	B2	C1	B3	A2	A1	C2
27	B4	B1	B2	C1	B3	A2	A1	C2
26	B4	B1	B2	C1	B3	A2	A1	C2
25	B4	B1	B2	C1	B3	A2	A1	C2
24	B4	B1	B2	C1	B3	A2	A1	C2
23	B4	B1	B2	C1	B3	A2	A1	C2
22	B4	B1	B2	C1	B3	A2	A1	C2
21	B4	B1	B2	C1	B3	A2	A1	C2
20	B4	B1	B2	C1	B3	A2	A1	C2
19	B4	B1	B2	C1	B3	A2	A1	C2
18	B4	B1	B2	C1	B3	A2	A1	C2
17	B4	B1	B2	C1	B3	A2	A1	C2
16	B4	B1	B2	C1	B3	A2	A1	C2
15	B4	B1	B2	C1	B3	A2	A1	C2
14	B4	B1	B2	C1	B3	A2	A1	C2
13	B4	B1	B2	C1	B3	A2	A1	C2
12	B4	B1	B2	C1	B3	A2	A1	C2
11	B4	B1	B2	C1	B3	A2	A1	C2
10	B4	B1	B2	C1	B3	A2	A1	C2
9	B4	B1	B2	C1	B3	A2	A1	C2
8	B4	B1	B2	C1	B3	A2	A1	C2
7	B4	B1	B2	C1	B3	A2	A1	C2
6	B4	B1	B2	C1	B3	A2	A1	C2
5	B4	B1	B2	C1	B3	A2	A1	C2
4	B4	B1	B2	C1	B3	A2	A1	C2
3	B4	B1	B2	C1	B3	A2	A1	C2
2	B4	B1	B2	C1	B3	A2	A1	C2
1	L1 FACILITIES							
B1	RESIDENCES CARPARK							
B2	RESIDENCES CARPARK							
B3	SERVICED RESIDENCES CARPARK							

### SEREEN

- 1-BEDROOM
- 2-BEDROOM
- 3-BEDROOM

## 5 HOLLAND VILLAGE WAY (QUINCY PRIVATE RESIDENCES)

STOREY/ HOUSE NO.	#17	#18	#19	#16
28	PENTHOUSE			
27	C3	D1	C4	D2
26	C3	D1	C4	D2
25	C3	D1	C4	D2
24	C3	D1	C4	D2
23	C3	D1	C4	C5
22	C3	D1	C4	C5
21	C3	D1	C4	C5
20	L20 FACILITIES			
19	SERVICED RESIDENCES		SERVICED RESIDENCES	
18				
17				
16				
15				
14				
13				
12				
11				
10				
9	SERVICED RESIDENCES		SERVICED RESIDENCES	
8				
7				
6				
5				
4				
3				
2				
1				
B1				
B1	SERVICED RESIDENCES SERVICE AREA			
B2	RESIDENCES CARPARK			
B3	SERVICED RESIDENCES CARPARK			

## 3 HOLLAND VILLAGE WAY (LEVEN)

STOREY/ HOUSE NO.	#09	#10	#11	#12	#13	#14	#15
4	ROOF TERRACE	ROOF TERRACE	ROOF TERRACE	ROOF TERRACE	ROOF TERRACE	ROOF TERRACE	ROOF TERRACE
3	B13	B14	B15	B14	B15	B14	B16
2	B9	B10	B11	B10	B11	B10	B12
1	B5	B6	B7	B6	B7	B6	B8
B1	RESIDENCES CARPARK						
B2	RESIDENCES CARPARK						
B3	SERVICED RESIDENCES CARPARK						

### QUINCY PRIVATE RESIDENCES

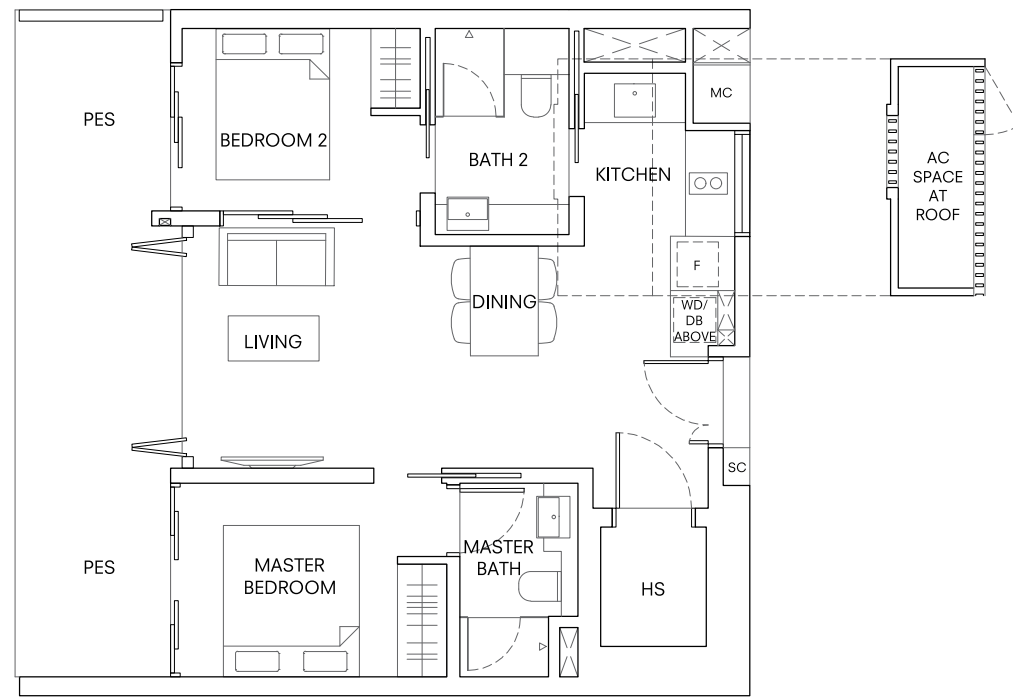
- 3-BEDROOM
- 3-BEDROOM + STUDY (LEVEL 21 TO 23)
- 4-BEDROOM
- 4-BEDROOM + STUDY DUPLEX (LEVEL 24 TO 27)

### LEVEN

- 2-BEDROOM

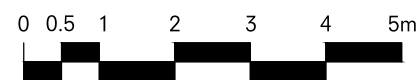
## 2-BEDROOM TYPE B5

3 Holland Village Way  
Unit #01-09  
Area 88 sqm / 947 sqft  
(Inclusive of 4 sqm AC ledge)

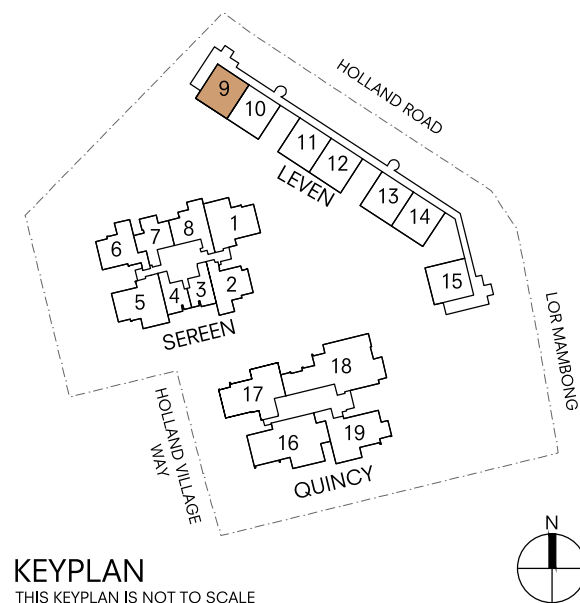


### LEGEND

HS HOUSEHOLD SHELTER  
DB DISTRIBUTION BOX  
F FRIDGE  
WD WASHER CUM DRYER  
SC SMART CABINET  
MC METER COMPARTMENT  
PES PRIVATE ENCLOSED SPACE



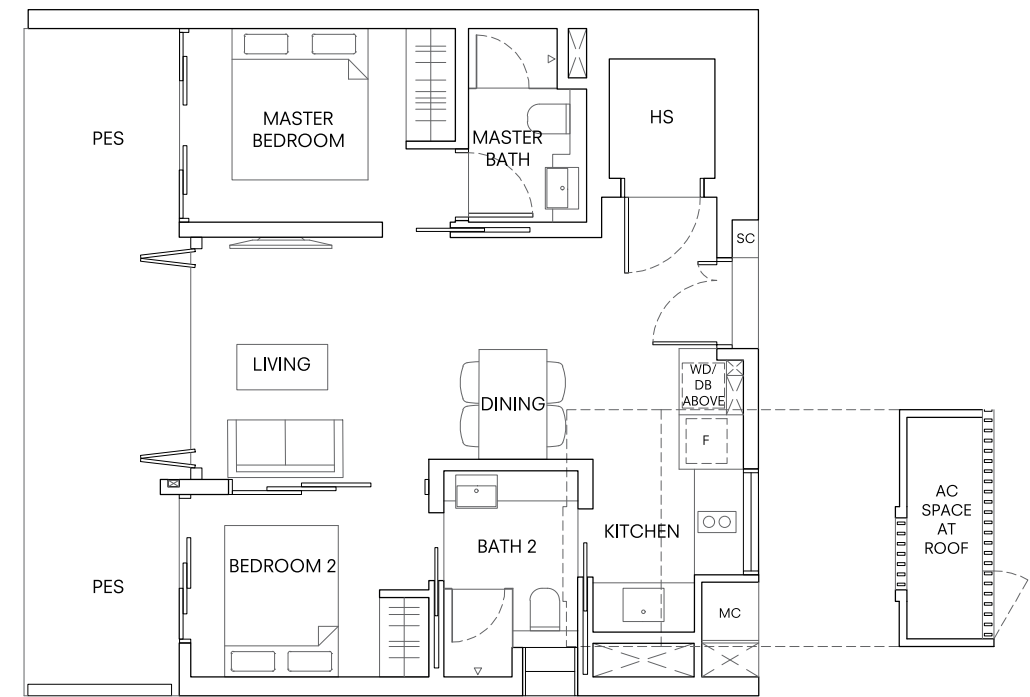
DISCLAIMER: THE ABOVE PLAN IS SUBJECT TO ANY AMENDMENTS AS MAY BE APPROVED BY THE RELEVANT AUTHORITIES.



KEYPLAN  
THIS KEYPLAN IS NOT TO SCALE

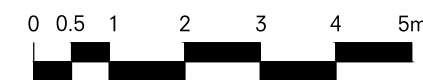
## 2-BEDROOM TYPE B6

3 Holland Village Way  
Unit #01-10, #01-12, #01-14  
Area 88 sqm / 947 sqft  
(Inclusive of 4 sqm AC ledge)

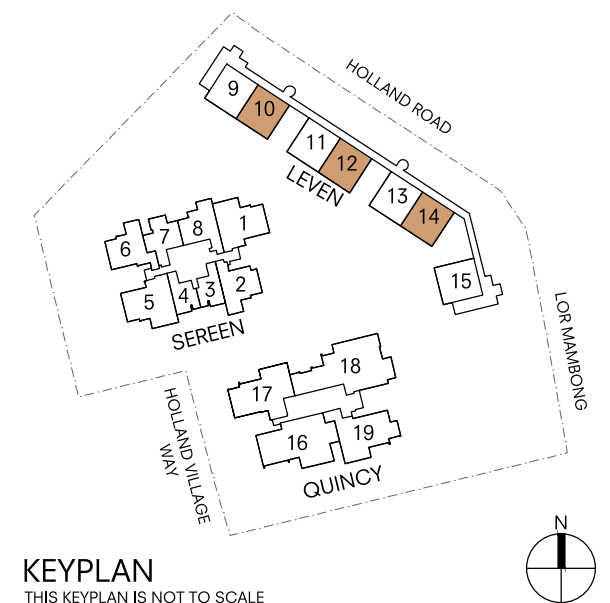


### LEGEND

HS HOUSEHOLD SHELTER  
DB DISTRIBUTION BOX  
F FRIDGE  
WD WASHER CUM DRYER  
SC SMART CABINET  
MC METER COMPARTMENT  
PES PRIVATE ENCLOSED SPACE



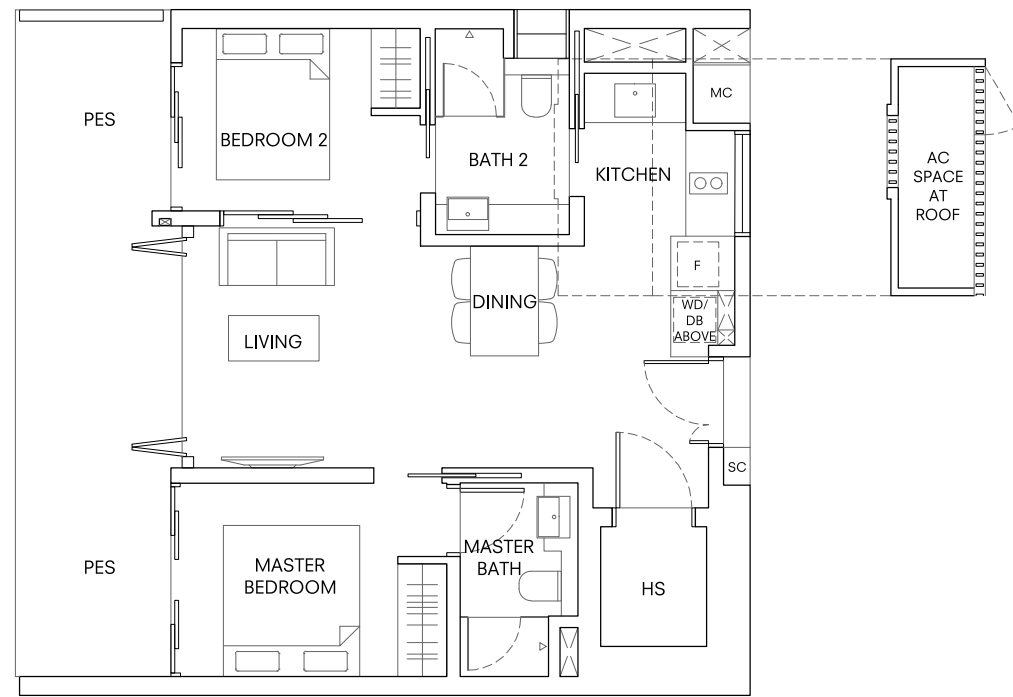
DISCLAIMER: THE ABOVE PLAN IS SUBJECT TO ANY AMENDMENTS AS MAY BE APPROVED BY THE RELEVANT AUTHORITIES.



KEYPLAN  
THIS KEYPLAN IS NOT TO SCALE

## 2-BEDROOM TYPE B7

3 Holland Village Way  
Unit #01-11, #01-13  
Area 88 sqm / 947 sqft  
(Inclusive of 4 sqm AC ledge)

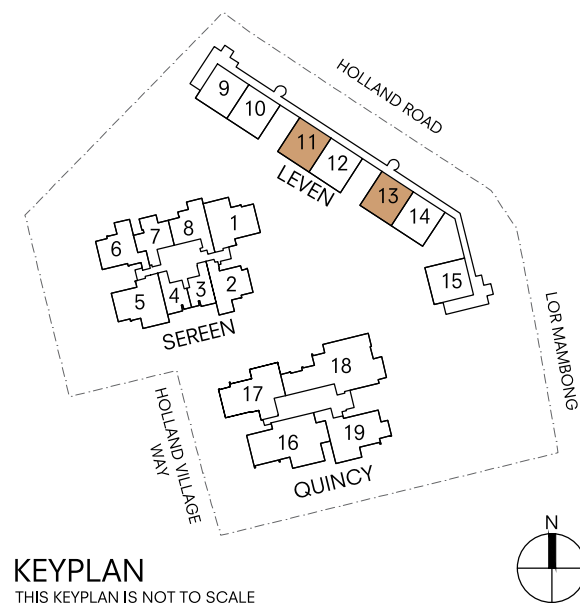


### LEGEND

HS HOUSEHOLD SHELTER  
DB DISTRIBUTION BOX  
F FRIDGE  
WD WASHER CUM DRYER  
SC SMART CABINET  
MC METER COMPARTMENT  
PES PRIVATE ENCLOSED SPACE



DISCLAIMER: THE ABOVE PLAN IS SUBJECT TO ANY AMENDMENTS AS MAY BE APPROVED BY THE RELEVANT AUTHORITIES.

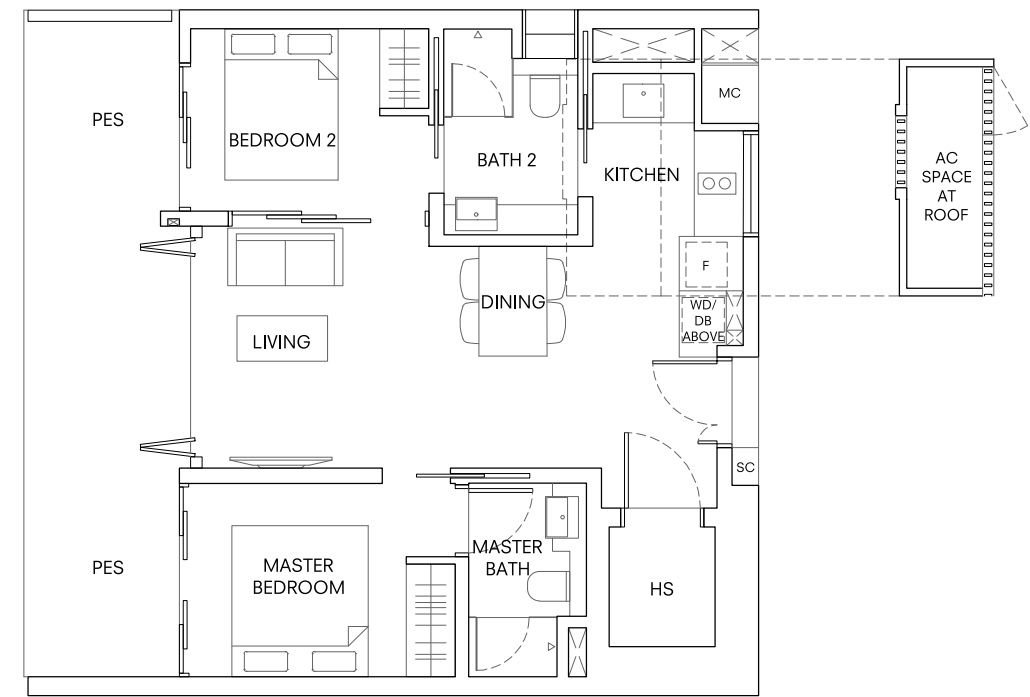


KEYPLAN  
THIS KEYPLAN IS NOT TO SCALE



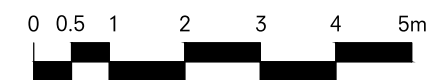
## 2-BEDROOM TYPE B8

3 Holland Village Way  
Unit #01-15  
Area 88 sqm / 947 sqft  
(Inclusive of 4 sqm AC ledge)

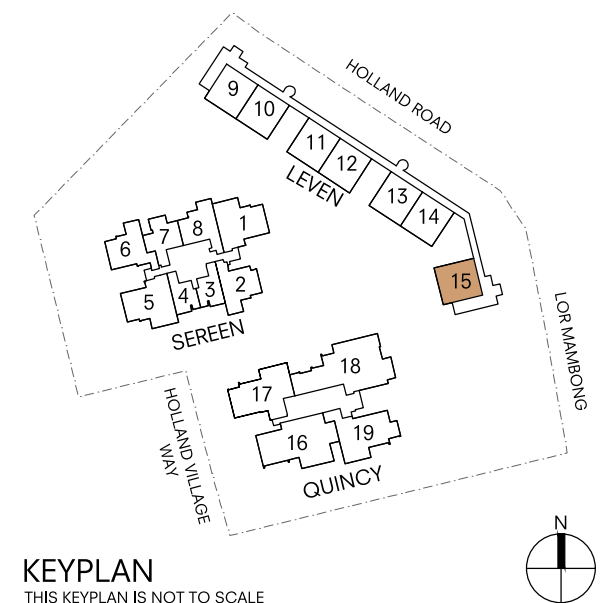


### LEGEND

HS HOUSEHOLD SHELTER  
DB DISTRIBUTION BOX  
F FRIDGE  
WD WASHER CUM DRYER  
SC SMART CABINET  
MC METER COMPARTMENT  
PES PRIVATE ENCLOSED SPACE



DISCLAIMER: THE ABOVE PLAN IS SUBJECT TO ANY AMENDMENTS AS MAY BE APPROVED BY THE RELEVANT AUTHORITIES.

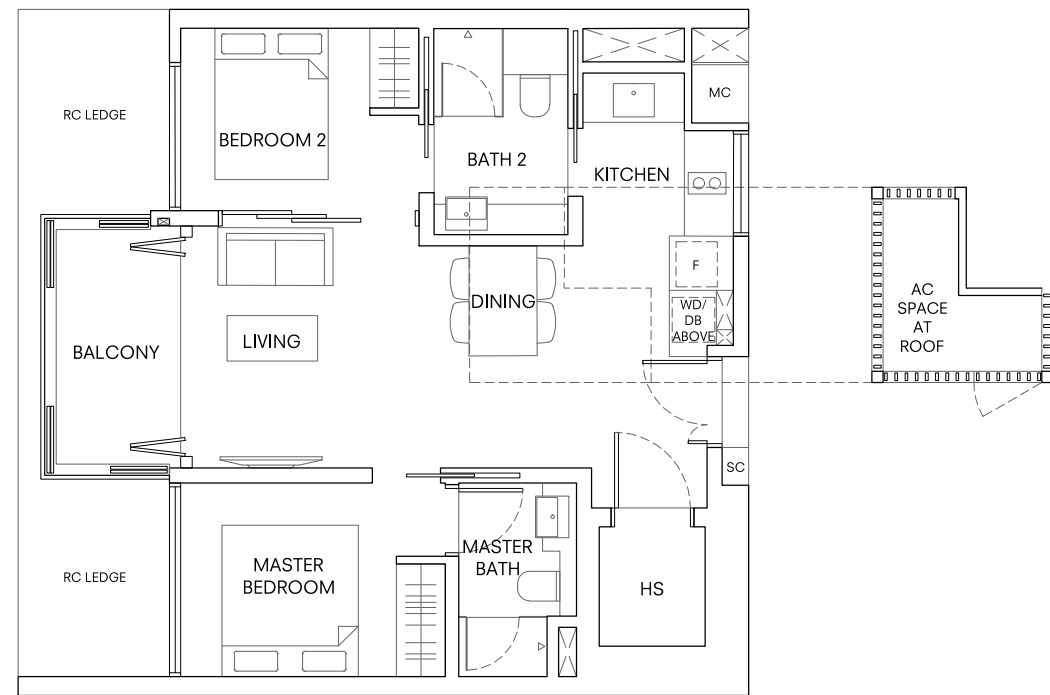


KEYPLAN  
THIS KEYPLAN IS NOT TO SCALE



## 2-BEDROOM TYPE B9

3 Holland Village Way  
Unit #02-09  
Area 75 sqm / 807 sqft  
(Inclusive of 4 sqm AC ledge)

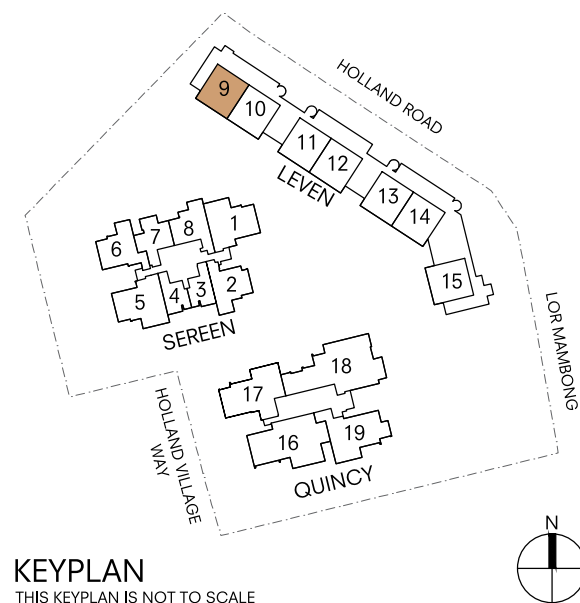


### LEGEND

HS HOUSEHOLD SHELTER  
DB DISTRIBUTION BOX  
F FRIDGE  
WD WASHER CUM DRYER  
SC SMART CABINET  
MC METER COMPARTMENT

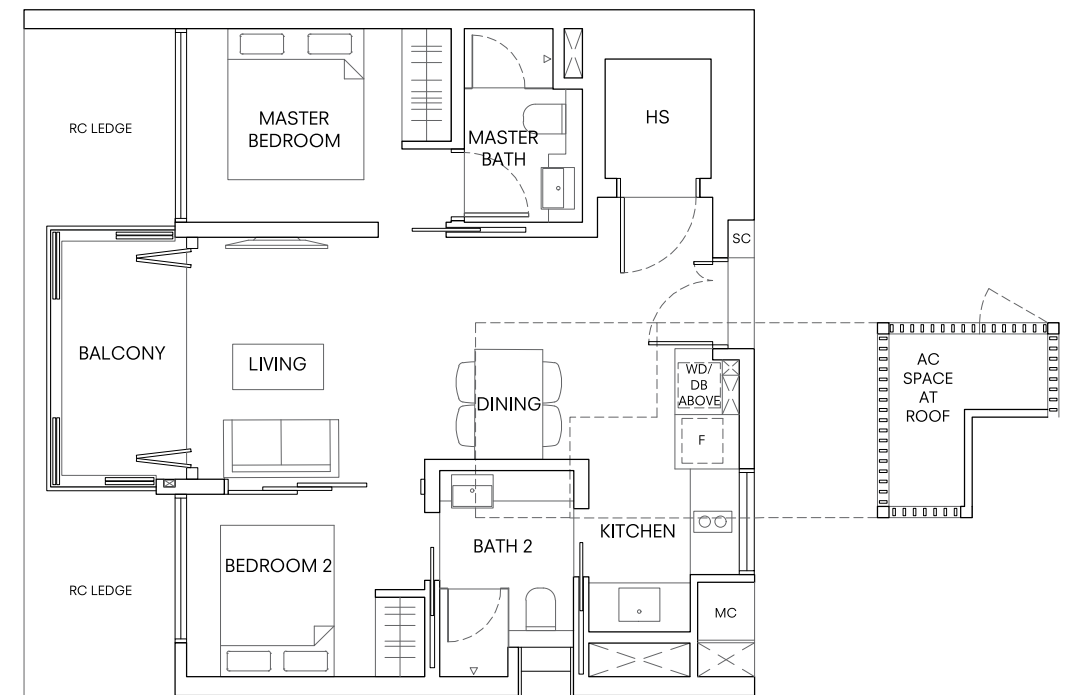


DISCLAIMER: THE ABOVE PLAN IS SUBJECT TO ANY AMENDMENTS AS MAY BE APPROVED BY THE RELEVANT AUTHORITIES.



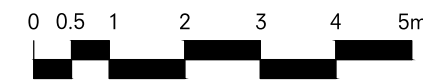
## 2-BEDROOM TYPE B10

3 Holland Village Way  
Unit #02-10, #02-12, #02-14  
Area 75 sqm / 807 sqft  
(Inclusive of 4 sqm AC ledge)

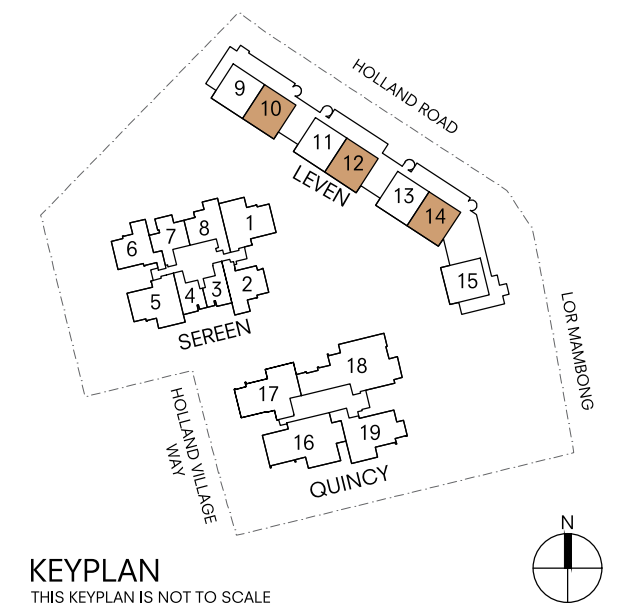


### LEGEND

HS HOUSEHOLD SHELTER  
DB DISTRIBUTION BOX  
F FRIDGE  
WD WASHER CUM DRYER  
SC SMART CABINET  
MC METER COMPARTMENT

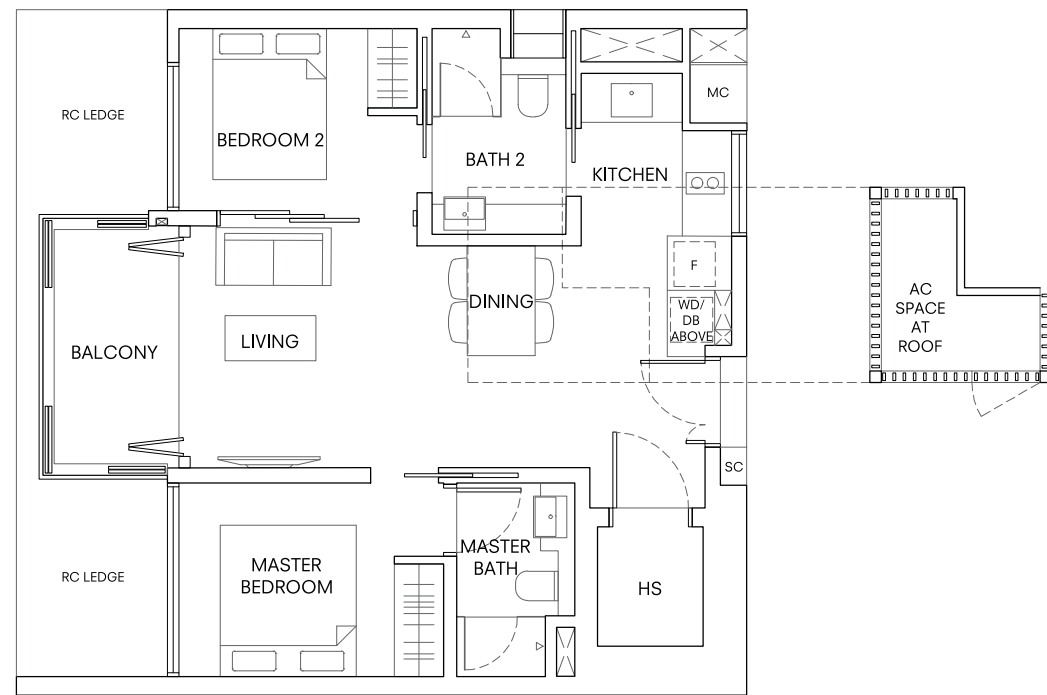


DISCLAIMER: THE ABOVE PLAN IS SUBJECT TO ANY AMENDMENTS AS MAY BE APPROVED BY THE RELEVANT AUTHORITIES.



## 2-BEDROOM TYPE B11

3 Holland Village Way  
Unit #02-11, #02-13  
Area 75 sqm / 807 sqft  
(Inclusive of 4 sqm AC ledge)

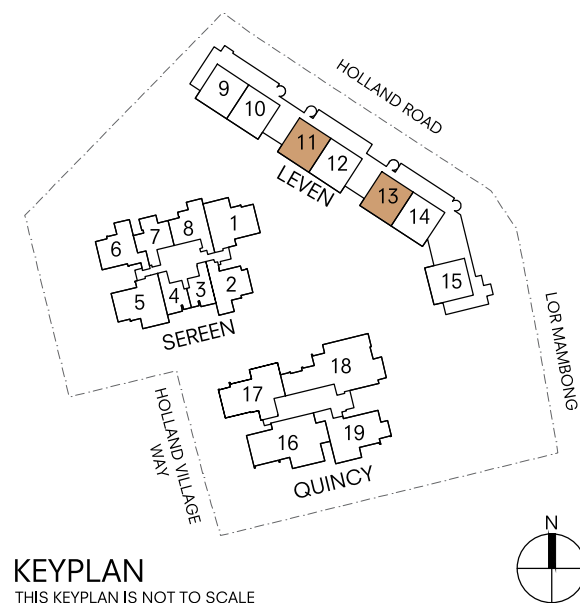


### LEGEND

HS HOUSEHOLD SHELTER  
DB DISTRIBUTION BOX  
F FRIDGE  
WD WASHER CUM DRYER  
SC SMART CABINET  
MC METER COMPARTMENT

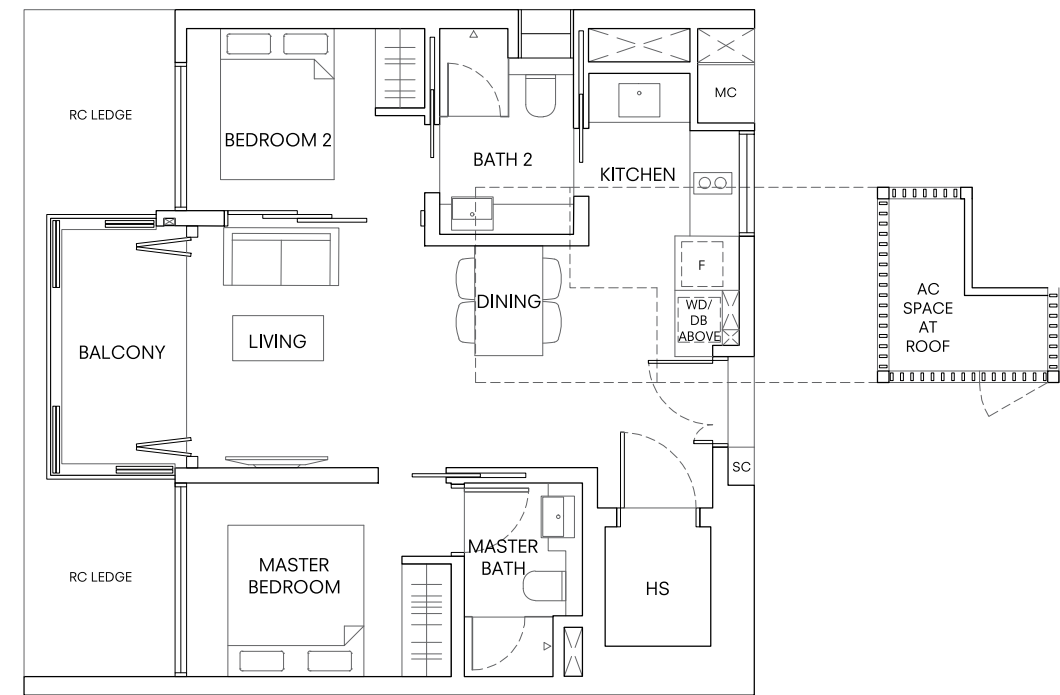


DISCLAIMER: THE ABOVE PLAN IS SUBJECT TO ANY AMENDMENTS AS MAY BE APPROVED BY THE RELEVANT AUTHORITIES.



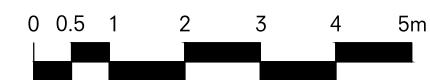
## 2-BEDROOM TYPE B12

3 Holland Village Way  
Unit #02-15  
Area 75 sqm / 807 sqft  
(Inclusive of 4 sqm AC ledge)

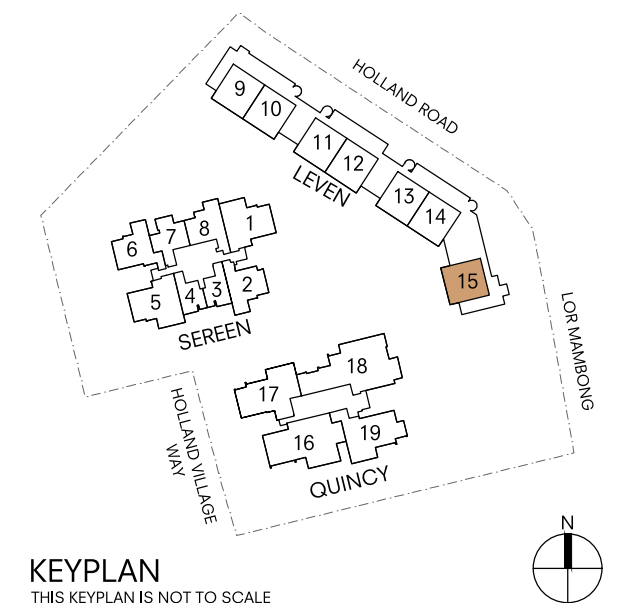


### LEGEND

HS HOUSEHOLD SHELTER  
DB DISTRIBUTION BOX  
F FRIDGE  
WD WASHER CUM DRYER  
SC SMART CABINET  
MC METER COMPARTMENT



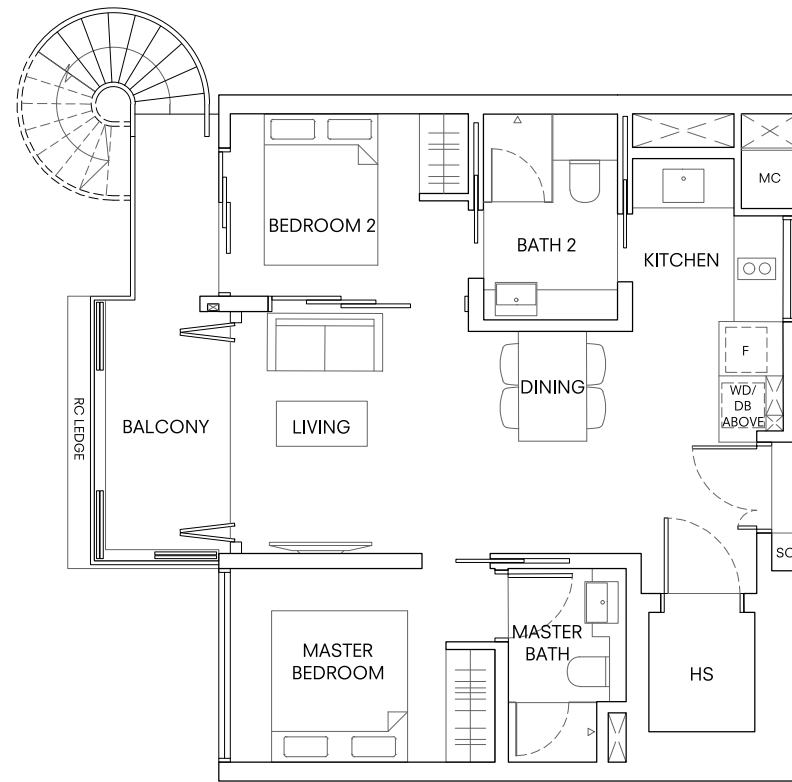
DISCLAIMER: THE ABOVE PLAN IS SUBJECT TO ANY AMENDMENTS AS MAY BE APPROVED BY THE RELEVANT AUTHORITIES.



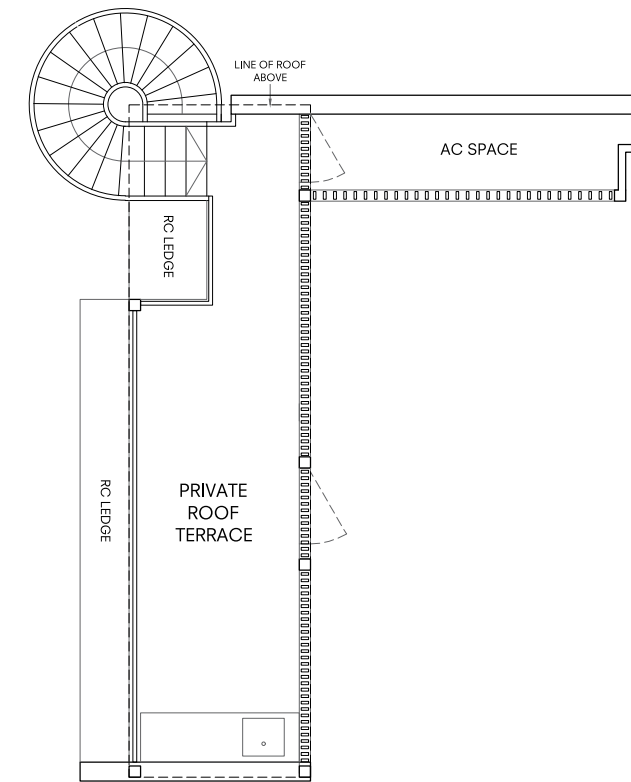


# 2-BEDROOM TYPE B13

3 Holland Village Way  
 Unit #03-09  
 Area 101 sqm / 1,087 sqft  
 (Inclusive of 5 sqm AC ledge)



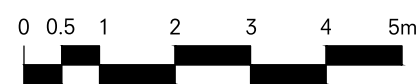
LOWER FLOOR



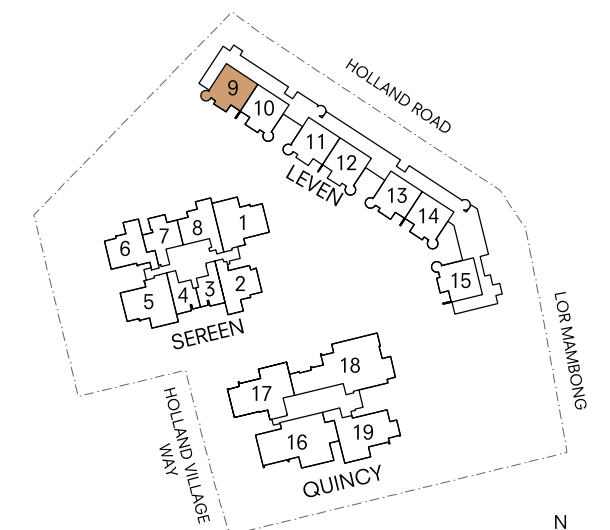
UPPER FLOOR

### LEGEND

- HS HOUSEHOLD SHELTER
- DB DISTRIBUTION BOX
- F FRIDGE
- WD WASHER CUM DRYER
- SC SMART CABINET
- MC METER COMPARTMENT



DISCLAIMER: THE ABOVE PLAN IS SUBJECT TO ANY AMENDMENTS AS MAY BE APPROVED BY THE RELEVANT AUTHORITIES.

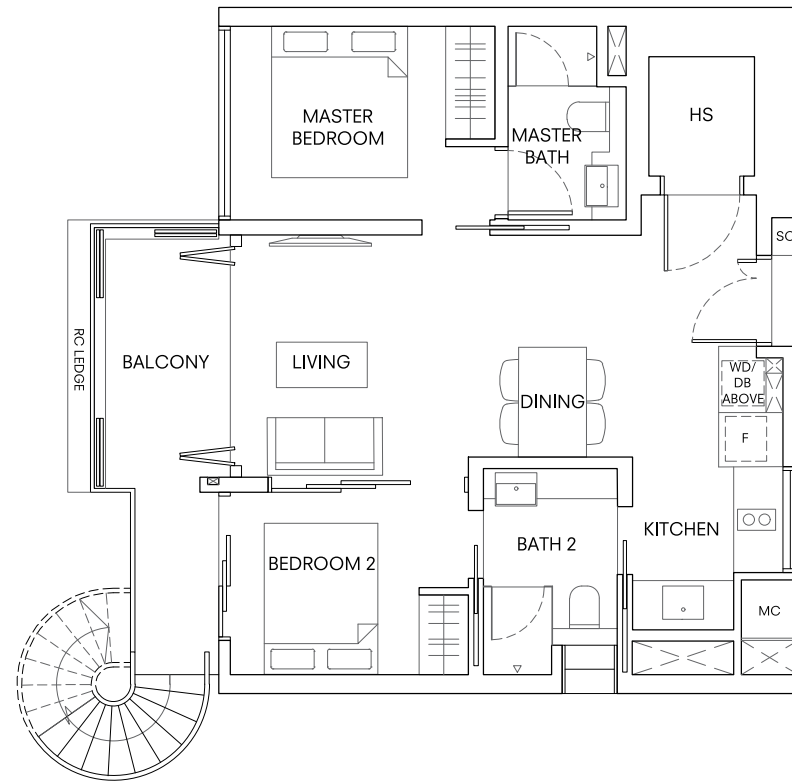


KEYPLAN  
 THIS KEYPLAN IS NOT TO SCALE

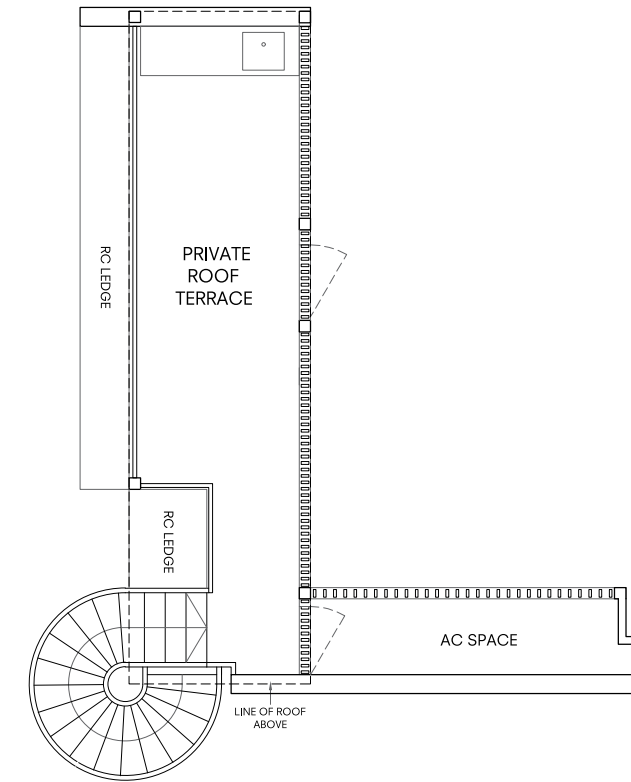


# 2-BEDROOM TYPE B14

3 Holland Village Way  
 Unit #03-10, #03-12, #03-14  
 Area 101 sqm / 1,087 sqft  
 (Inclusive of 5 sqm AC ledge)



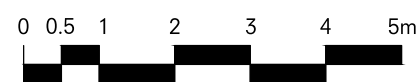
LOWER FLOOR



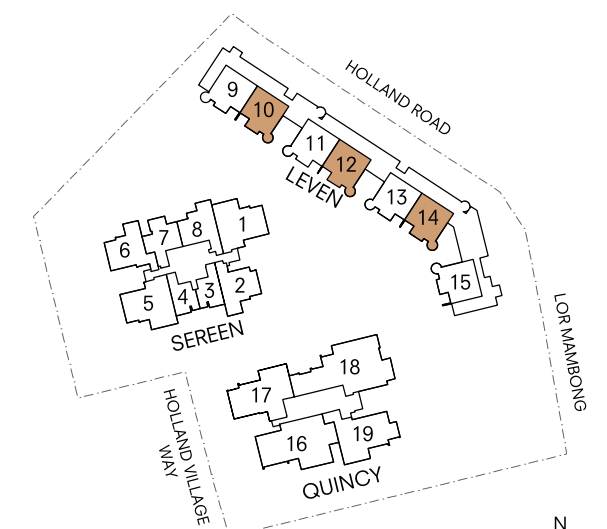
UPPER FLOOR

### LEGEND

- HS HOUSEHOLD SHELTER
- DB DISTRIBUTION BOX
- F FRIDGE
- WD WASHER CUM DRYER
- SC SMART CABINET
- MC METER COMPARTMENT



DISCLAIMER: THE ABOVE PLAN IS SUBJECT TO ANY AMENDMENTS AS MAY BE APPROVED BY THE RELEVANT AUTHORITIES.

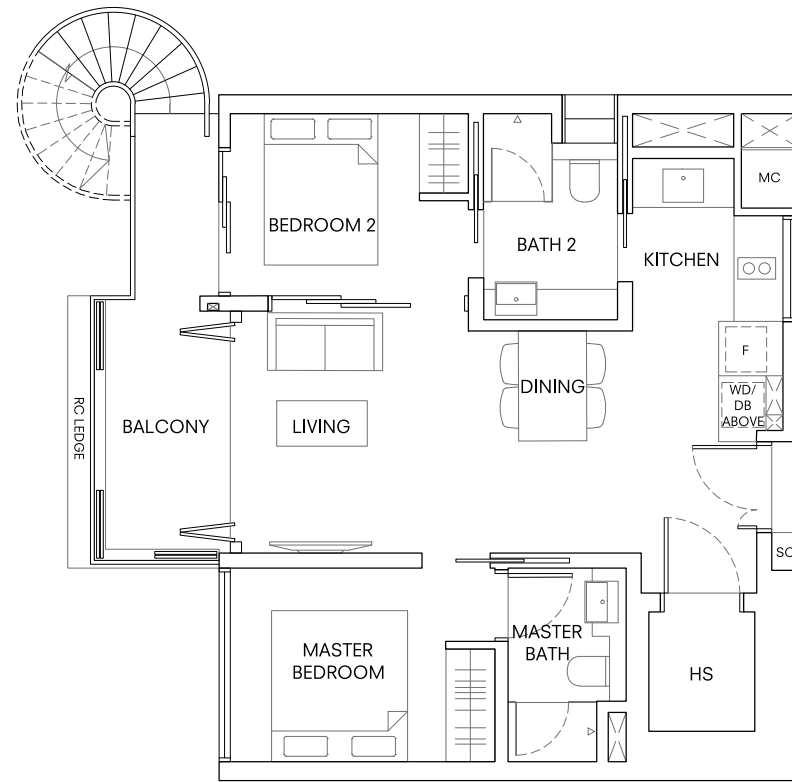


KEYPLAN  
THIS KEYPLAN IS NOT TO SCALE

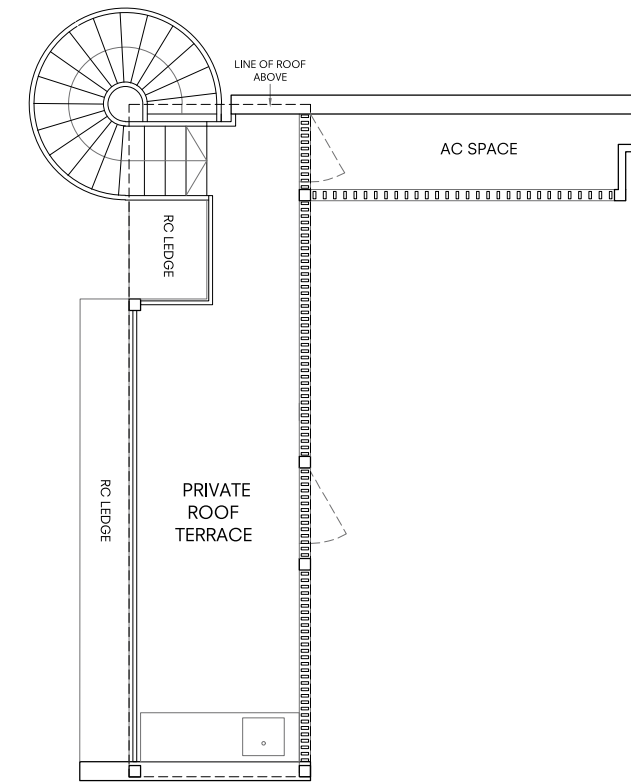


# 2-BEDROOM TYPE B15

3 Holland Village Way  
 Unit #03-11, #03-13  
 Area 101 sqm / 1,087 sqft  
 (Inclusive of 5 sqm AC ledge)



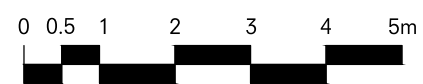
LOWER FLOOR



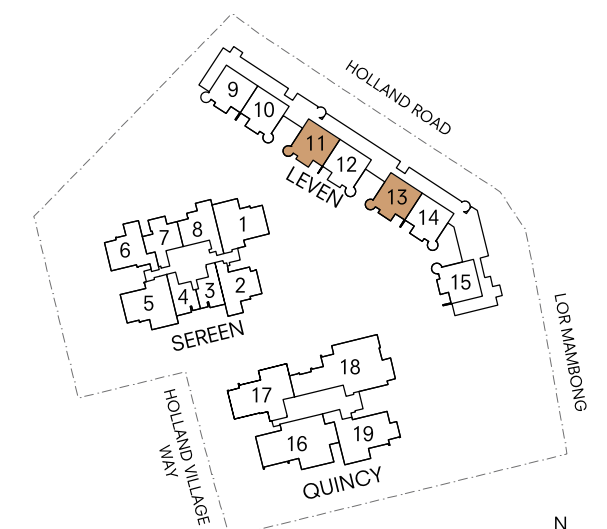
UPPER FLOOR

### LEGEND

- HS HOUSEHOLD SHELTER
- DB DISTRIBUTION BOX
- F FRIDGE
- WD WASHER CUM DRYER
- SC SMART CABINET
- MC METER COMPARTMENT



DISCLAIMER: THE ABOVE PLAN IS SUBJECT TO ANY AMENDMENTS AS MAY BE APPROVED BY THE RELEVANT AUTHORITIES.

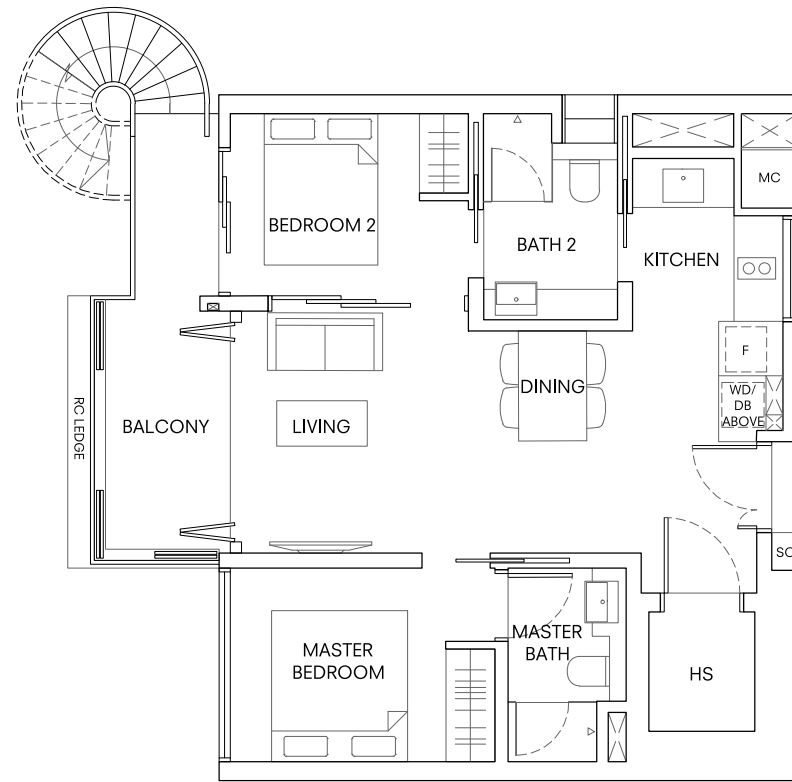


KEYPLAN  
THIS KEYPLAN IS NOT TO SCALE

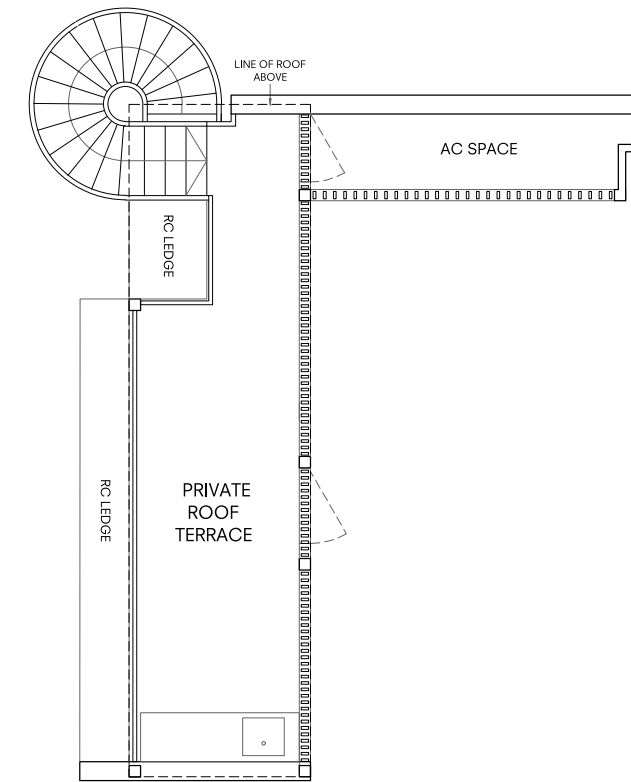


# 2-BEDROOM TYPE B16

3 Holland Village Way  
 Unit #03-15  
 Area 101 sqm / 1,087 sqft  
 (Inclusive of 5 sqm AC ledge)



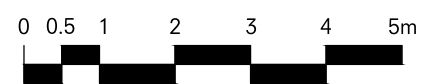
LOWER FLOOR



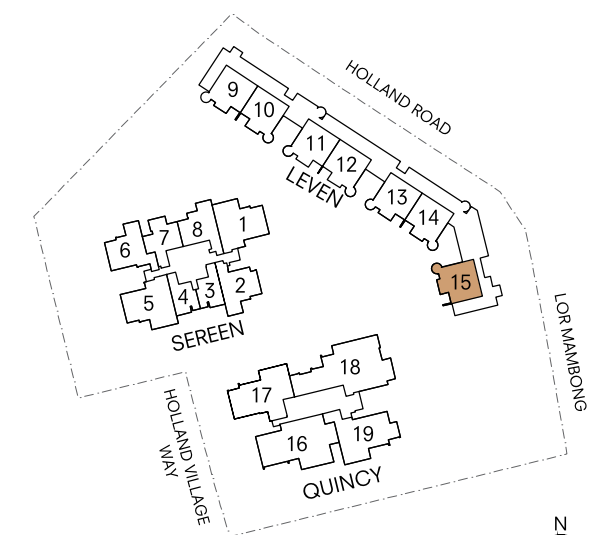
UPPER FLOOR

### LEGEND

- HS HOUSEHOLD SHELTER
- DB DISTRIBUTION BOX
- F FRIDGE
- WD WASHER CUM DRYER
- SC SMART CABINET
- MC METER COMPARTMENT



DISCLAIMER: THE ABOVE PLAN IS SUBJECT TO ANY AMENDMENTS AS MAY BE APPROVED BY THE RELEVANT AUTHORITIES.



KEYPLAN  
 THIS KEYPLAN IS NOT TO SCALE



Jointly developed by:



Sekisui House Limited is the largest leading housing company in Japan with involvement in a variety of real estate developments, from residential homes to the development of mixed use properties and master-planned communities. Founded in 1960, the company has built a cumulative 2.2 million houses. Sekisui House, headquartered in Osaka, also has offices in Australia, China, Singapore and USA.



Sino Group is one of the leading property developers in Hong Kong with core business in developing residential, office, industrial and retail properties for sale and investment. The Group is also a major player in hotel investment and management, club management, property management, car park operations as well as environmental and security services. With a team of over 10,000 dedicated professionals, Sino Group strives to consistently deliver quality properties and services that surpass the expectations of customers.



**Far East Organization**  
INSPIRE BETTER LIVES

Far East Organization is a Christian Enterprise, which develops real estate and operates businesses by serving with grace, love, integrity and honesty. Established in 1960, Far East Organization is the largest private property developer in Singapore. The Organization develops, owns and manages a diverse spectrum of real estate products across the residential, hospitality, retail, commercial, medical and industrial space segments. Far East Organization is the winner of 11 FIABCI World Prix d'Excellence awards, the highest honour in international real estate.



Developer: Commons Residential Pte. Ltd. (201713491Z), Commons SR Trustee Pte. Ltd. (in its capacity as Trustee-Manager of Commons SR Trust) (201713496N) & Commons Commercial Trustee Pte. Ltd. (in its capacity as Trustee-Manager of Commons Commercial Trust) (201713492K) • Licence No.: C1339 • Tenure: Leasehold 99 years from 13 Aug 18 • Encumbrances: Mortgage No. IF/340492B & IF/340510E in favour of DBS Bank Ltd • Land Description: Lot 07253C Pt (Provisional Lot 07333T) MK 04 at Holland Road • Expected Vacant Possession Date: 31 Dec 2025 • Expected Legal Completion Date: 31 Dec 2028 • DISCLAIMER: The information contained herein is subject to change and cannot form part of an offer or contract. While every reasonable care has been taken in providing this information, the developer or its agent cannot be held responsible for any inaccuracies. Whilst we believe the contents of this brochure to be correct and accurate at time of print, they are not to be regarded as statements or representations of fact. Illustrations in the brochure are artist's impressions, which serve only to give an approximate idea of the project. All artist's impressions and all plans are subject to any amendments as may be approved by the relevant authorities. The developer reserves the right to modify any parts of the building prior to project completion as approved or directed by the Planning Authorities or as the owner deems fit in its sole discretion. Retail mix is subject to change. The developer reserves any and all copyright, design and other proprietary rights in and to this document (or any part thereof) including all or any part of the information, material or artwork contained therein. Unless otherwise expressly agreed to in writing, this document or any part thereof may not be copied, modified, distributed, reproduced or reused without the express written consent of the developer. \*The "Quincy" brand name including trademarks, logo and goodwill associated with it are owned by a third-party licensor and the developer is authorised pursuant to a limited, non-exclusive, non-transferable and nonsublicensable license to the use of the brand name, including trademarks, logo and goodwill as part of the name for the Residences. The licence granted by the licensor may be terminated or revoked in which case, upon such termination and/or revocation of the licence, the use of the "Quincy" brand name shall be discontinued and neither the individual residential units nor any part of the Residences will be identified as a "Quincy" branded project or have any rights to use the "Quincy" trademarks, logo and goodwill associated with it.\* 2019/11/22/P500

