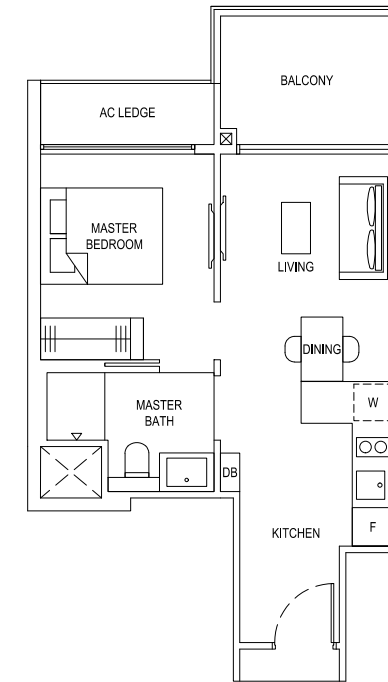


**TYPE 1B1**  
44 sqm / 474 sqft

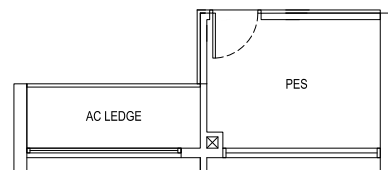
#02-57 to #17-57 (BLOCK 93)  
#02-60 to #17-60\* (BLOCK 93)



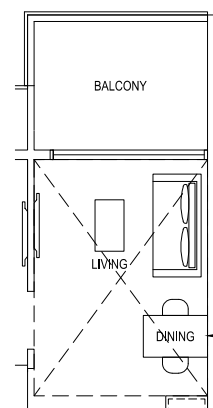
**TYPE 1B2**  
45 sqm / 484 sqft

#02-01 to #17-01 (BLOCK 81)  
#02-18 to #17-18\* (BLOCK 83)  
#02-27 to #17-27\* (BLOCK 85)  
#02-35 to #17-35 (BLOCK 87)  
#02-36 to #17-36\* (BLOCK 87)  
#02-44 to #17-44 (BLOCK 91)  
#02-71 to #17-71 (BLOCK 95)  
#02-72 to #17-72\* (BLOCK 95)  
#02-80 to #17-80 (BLOCK 97)  
#02-81 to #17-81\* (BLOCK 97)

**TYPE 1B1(G)**  
44 sqm / 474 sqft  
#01-57 (BLOCK 93)  
#01-60\* (BLOCK 93)

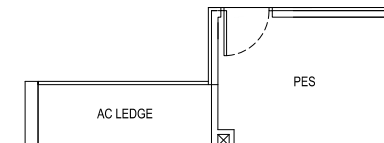


**TYPE 1B1(Ph)**  
55 sqm / 592 sqft  
(incl. void 11 sqm / 118 sqft)  
#18-57 (BLOCK 93)  
#18-60\* (BLOCK 93)

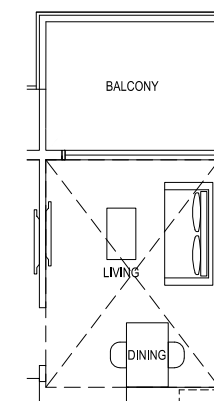


Dotted line denotes void area of 11 sqm / 118 sqft above living and dining for #18-57, #18-60

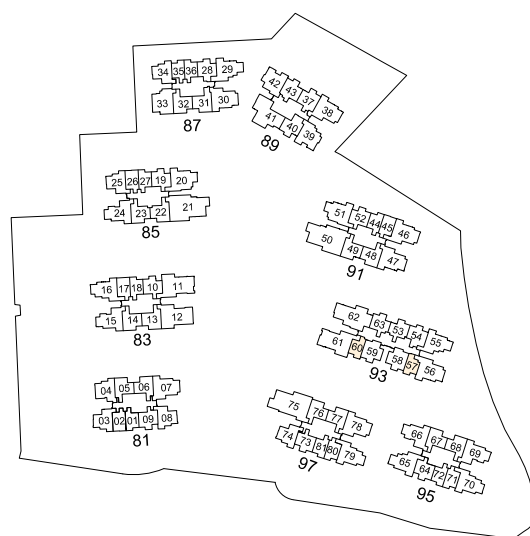
**TYPE 1B2(G)**  
45 sqm / 484 sqft  
#01-01 (BLOCK 81)  
#01-18\* (BLOCK 83)  
#01-27\* (BLOCK 85)  
#01-35 (BLOCK 87)  
#01-36\* (BLOCK 87)  
#01-44 (BLOCK 91)  
#01-71 (BLOCK 95)  
#01-72\* (BLOCK 95)  
#01-80 (BLOCK 97)  
#01-81\* (BLOCK 97)



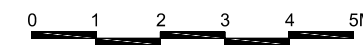
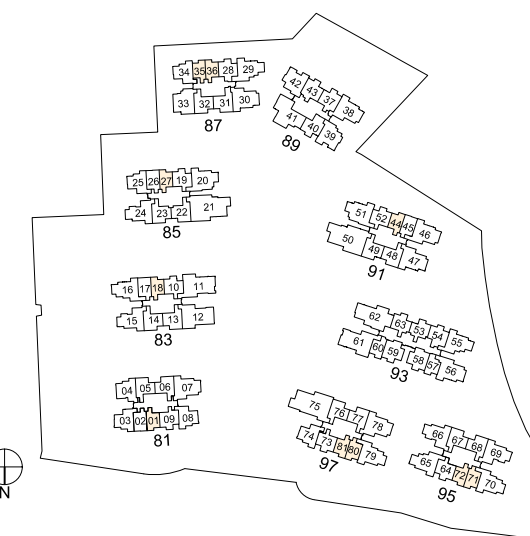
**TYPE 1B2(Ph)**  
56 sqm / 603 sqft  
(incl. void 11 sqm / 118 sqft)  
#18-01 (BLOCK 81)  
#18-18\* (BLOCK 83)  
#18-27\* (BLOCK 85)  
#18-35 (BLOCK 87)  
#18-36\* (BLOCK 87)  
#18-44 (BLOCK 91)  
#18-71 (BLOCK 95)  
#18-72\* (BLOCK 95)  
#18-80 (BLOCK 97)  
#18-81\* (BLOCK 97)



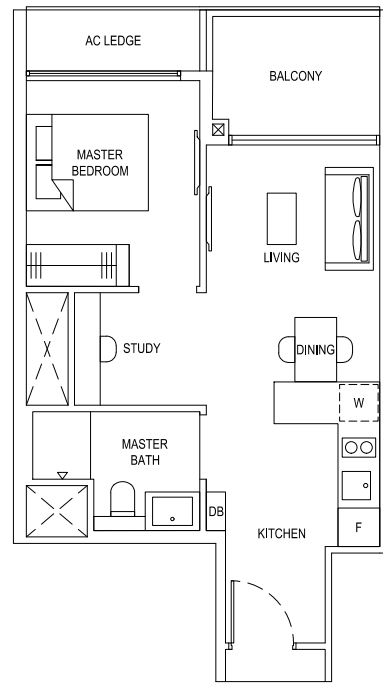
Dotted line denotes void area of 11 sqm / 118 sqft above living and dining for #18-01, #18-18, #18-27, #18-35, #18-36, #18-44, #18-71, #18-72, #18-80, #18-81



Plans are subject to change/amendments as may be required and/or approved by the Developer and/or the relevant authorities and do not form part of any offer or contract. These are not drawn to scale and are for the purpose of visual presentation only. \*Units with mirror image.

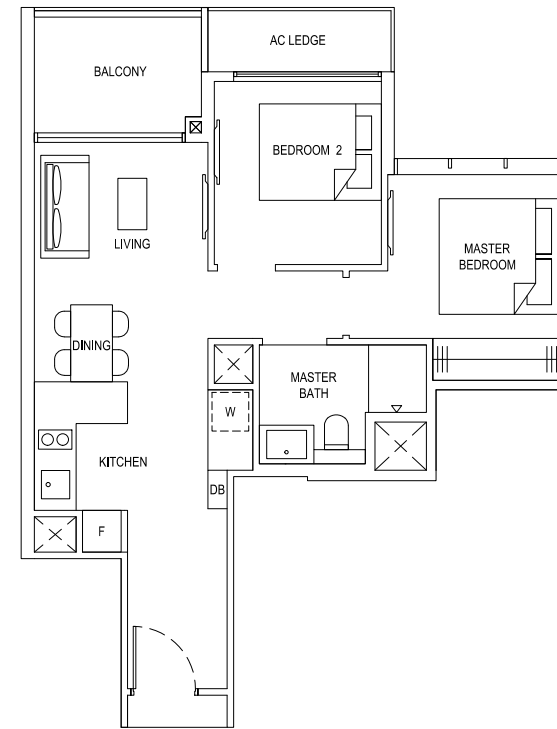


Plans are subject to change/amendments as may be required and/or approved by the Developer and/or the relevant authorities and do not form part of any offer or contract. These are not drawn to scale and are for the purpose of visual presentation only. \*Units with mirror image.



**TYPE 1S1**  
49 sqm / 527 sqft

- #02-02 to #17-02\* (BLOCK 81)
- #02-17 to #17-17 (BLOCK 83)
- #02-26 to #17-26 (BLOCK 85)
- #02-45 to #17-45\* (BLOCK 91)

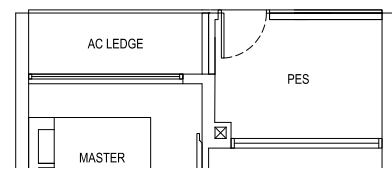


**TYPE 2C1**  
59 sqm / 635 sqft

- #02-05 to #17-05 (BLOCK 81)
- #03-06 to #17-06\* (BLOCK 81)
- #03-67 to #17-67 (BLOCK 95)
- #02-68 to #17-68\* (BLOCK 95)
- #03-76 to #17-76 (BLOCK 97)
- #02-77 to #17-77\* (BLOCK 97)

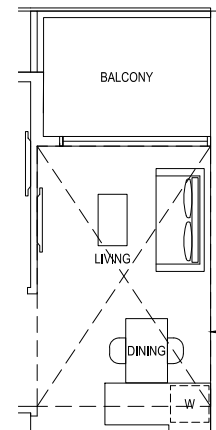
**TYPE 1S1(G)**  
49 sqm / 527 sqft

- #01-02\* (BLOCK 81)
- #01-17 (BLOCK 83)
- #01-26 (BLOCK 85)
- #01-45\* (BLOCK 91)



**TYPE 1S1(Ph)**  
62 sqm / 667 sqft  
(incl. void 13 sqm / 140 sqft)

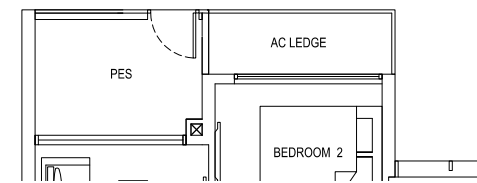
- #18-02\* (BLOCK 81)
- #18-17 (BLOCK 83)
- #18-26 (BLOCK 85)
- #18-45\* (BLOCK 91)



Dotted line denotes void area of 13 sqm / 140 sqft above living and dining for #18-02, #18-17, #18-26, #18-45

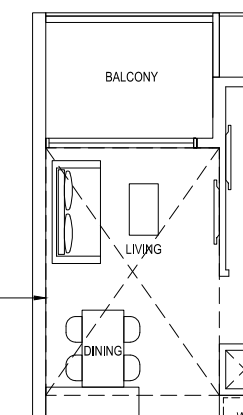
**TYPE 2C1(G)**  
59 sqm / 635 sqft

- #01-05 (BLOCK 81)
- #01-68\* (BLOCK 95)
- #01-77\* (BLOCK 97)

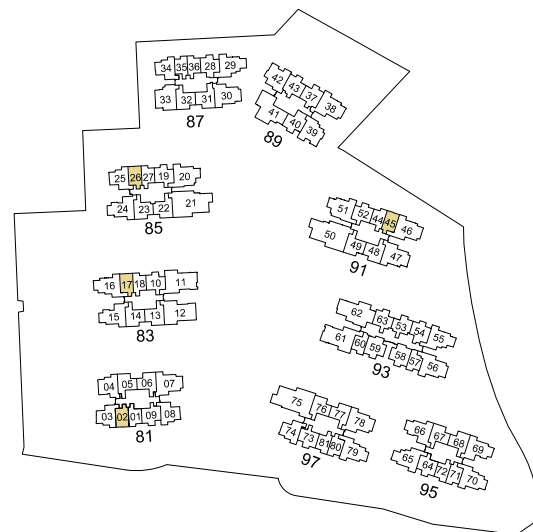


**TYPE 2C1(Ph)**  
71 sqm / 764 sqft  
(incl. void 12 sqm / 129 sqft)

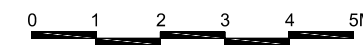
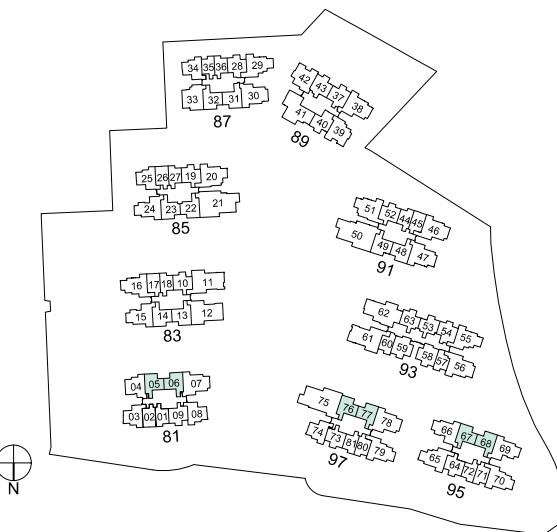
- #18-05 (BLOCK 81)
- #18-06\* (BLOCK 81)
- #18-67 (BLOCK 95)
- #18-68\* (BLOCK 95)
- #18-76 (BLOCK 97)
- #18-77\* (BLOCK 97)



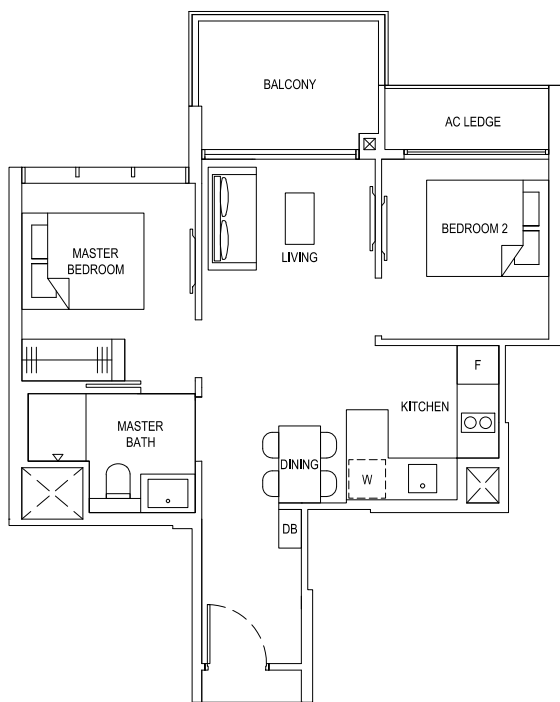
Dotted line denotes void area of 12 sqm / 129 sqft above living and dining for #18-05, #18-06, #18-67, #18-68, #18-76, #18-77



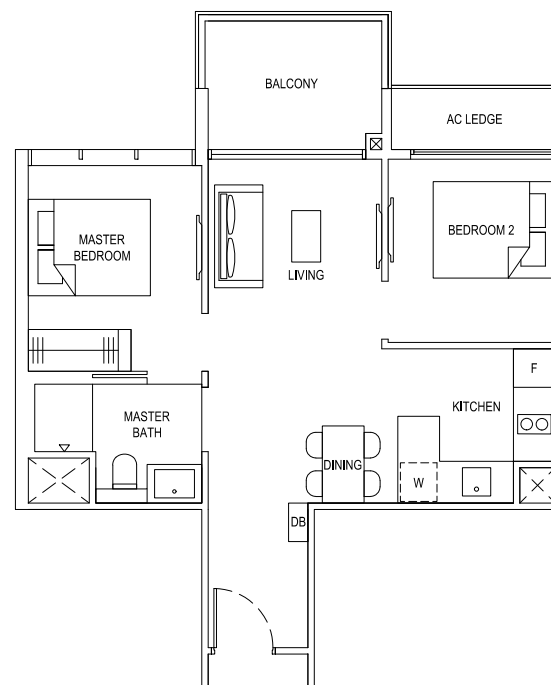
Plans are subject to change/amendments as may be required and/or approved by the Developer and/or the relevant authorities and do not form part of any offer or contract. These are not drawn to scale and are for the purpose of visual presentation only. \*Units with mirror image.



Plans are subject to change/amendments as may be required and/or approved by the Developer and/or the relevant authorities and do not form part of any offer or contract. These are not drawn to scale and are for the purpose of visual presentation only. \*Units with mirror image.

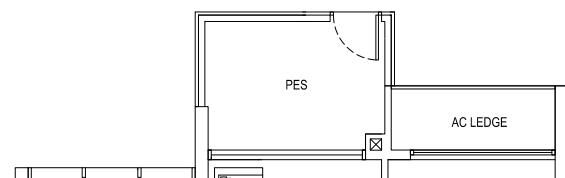


**TYPE 2C2**  
58 sqm / 624 sqft  
#02-53 to #17-53 (BLOCK 93)  
#02-63 to #17-63\* (BLOCK 93)

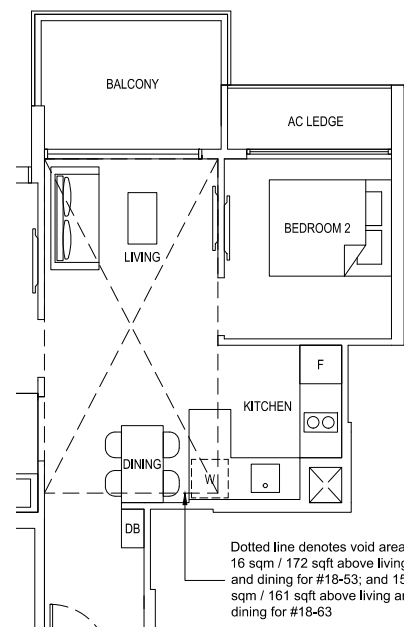


**TYPE 2C3**  
59 sqm / 635 sqft  
#02-09 to #17-09 (BLOCK 81)  
#02-10 to #17-10\* (BLOCK 83)  
#02-19 to #17-19\* (BLOCK 85)  
#02-28 to #17-28\* (BLOCK 87)  
#02-52 to #17-52 (BLOCK 91)  
#02-64 to #17-64\* (BLOCK 95)  
#02-73 to #17-73\* (BLOCK 97)

**TYPE 2C2(G)**  
58 sqm / 624 sqft  
#01-53 (BLOCK 93)  
#01-63\* (BLOCK 93)

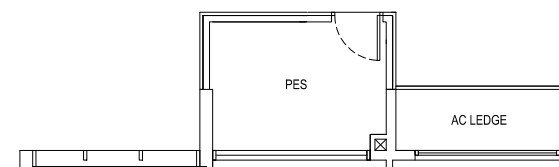


**TYPE 2C2(Ph)**  
74 sqm / 797 sqft (incl. void 16 sqm / 172 sqft)  
#18-53 (BLOCK 93)  
73 sqm / 786 sqft (incl. void 15 sqm / 161 sqft)  
#18-63\* (BLOCK 93)

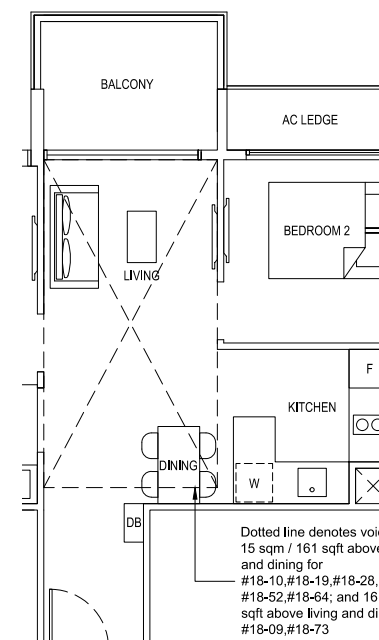


Dotted line denotes void area of 16 sqm / 172 sqft above living and dining for #18-53; and 15 sqm / 161 sqft above living and dining for #18-63

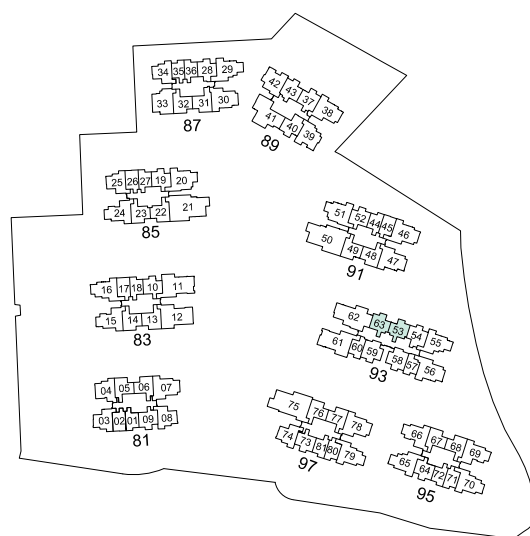
**TYPE 2C3(G)**  
59 sqm / 635 sqft  
#01-09 (BLOCK 81)  
#01-10\* (BLOCK 83)  
#01-19\* (BLOCK 85)  
#01-28\* (BLOCK 87)  
#01-52 (BLOCK 91)  
#01-64\* (BLOCK 95)  
#01-73\* (BLOCK 97)



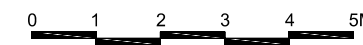
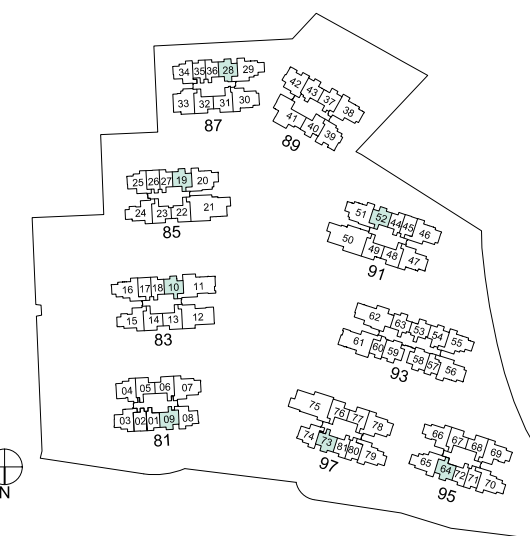
**TYPE 2C3(Ph)**  
74 sqm / 797 sqft (incl. void 15 sqm / 161 sqft)  
#18-10\* (BLOCK 83)  
#18-19\* (BLOCK 85)  
#18-28\* (BLOCK 87)  
#18-52 (BLOCK 91)  
#18-64\* (BLOCK 95)  
75 sqm / 807 sqft (incl. void 16 sqm / 172 sqft)  
#18-09 (BLOCK 81)  
#18-73\* (BLOCK 97)



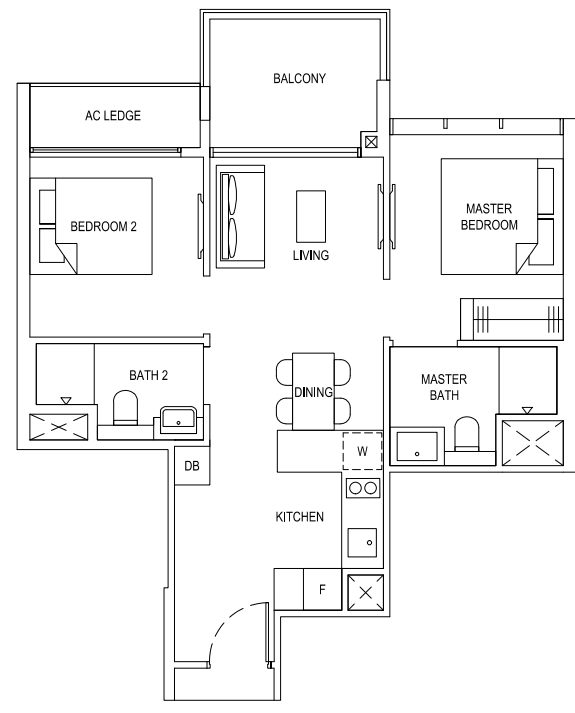
Dotted line denotes void area of 15 sqm / 161 sqft above living and dining for #18-10, #18-19, #18-28, #18-52, #18-64; and 16 sqm / 172 sqft above living and dining for #18-09, #18-73



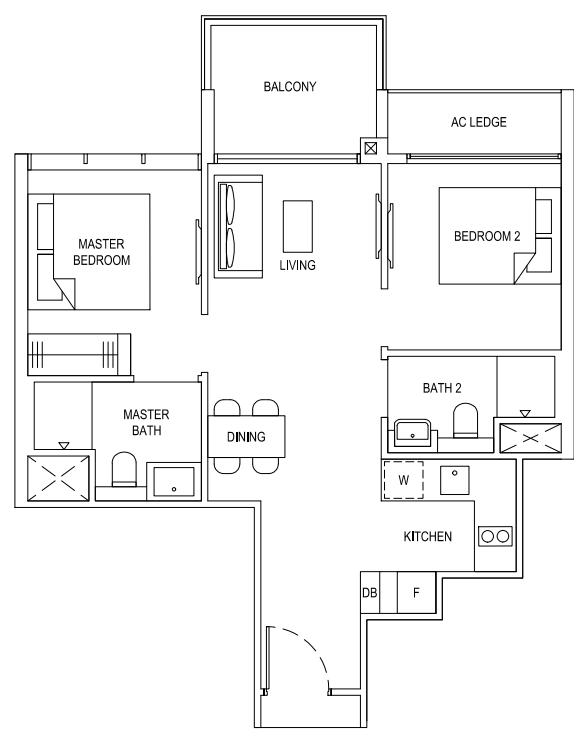
Plans are subject to change/amendments as may be required and/or approved by the Developer and/or the relevant authorities and do not form part of any offer or contract. These are not drawn to scale and are for the purpose of visual presentation only. \*Units with mirror image.



Plans are subject to change/amendments as may be required and/or approved by the Developer and/or the relevant authorities and do not form part of any offer or contract. These are not drawn to scale and are for the purpose of visual presentation only. \*Units with mirror image.

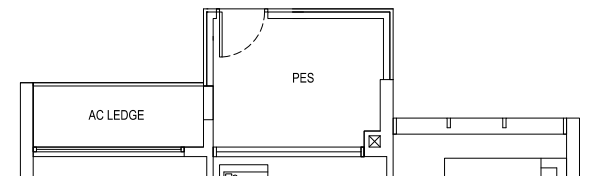


TYPE 2D1  
60 sqm / 646 sqft  
#02-54 to #17-54 (BLOCK 93)

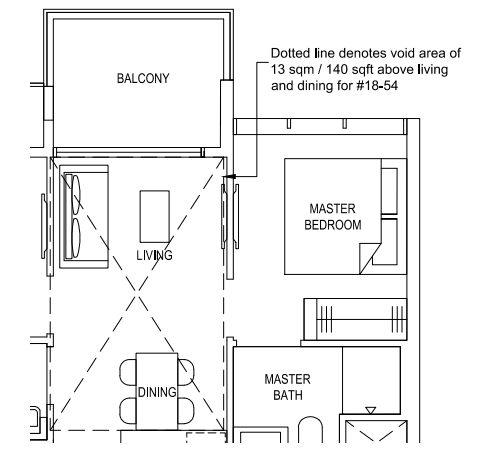


TYPE 2D2  
62 sqm / 667 sqft  
#02-37 to #17-37 (BLOCK 89)  
#02-43 to #17-43\* (BLOCK 89)

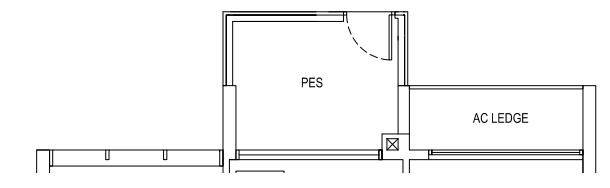
TYPE 2D1(G)  
60 sqm / 646 sqft  
#01-54 (BLOCK 93)



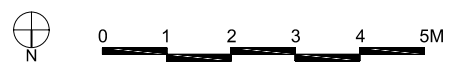
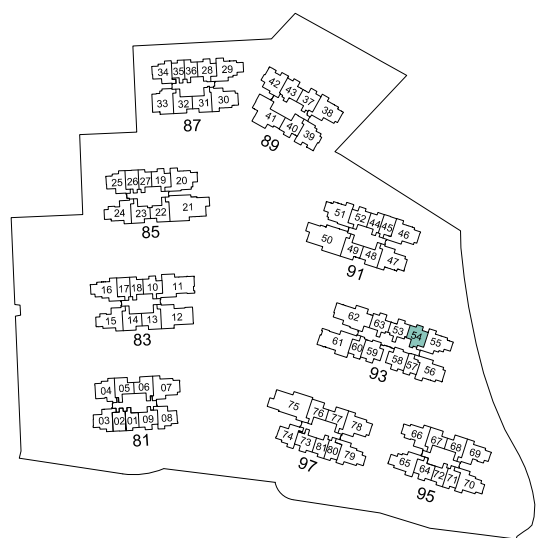
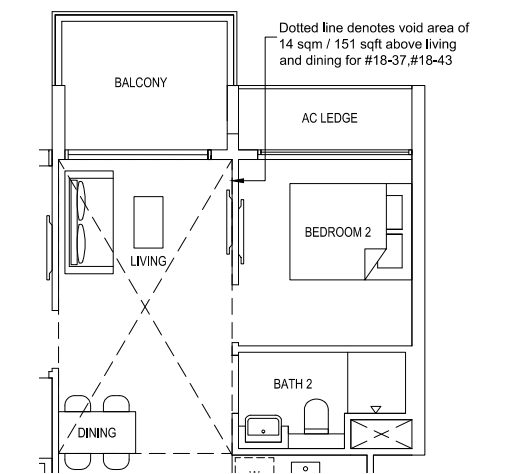
TYPE 2D1(Ph)  
73 sqm / 786 sqft (incl. void 13 sqm / 140 sqft)  
#18-54 (BLOCK 93)



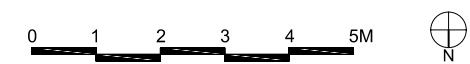
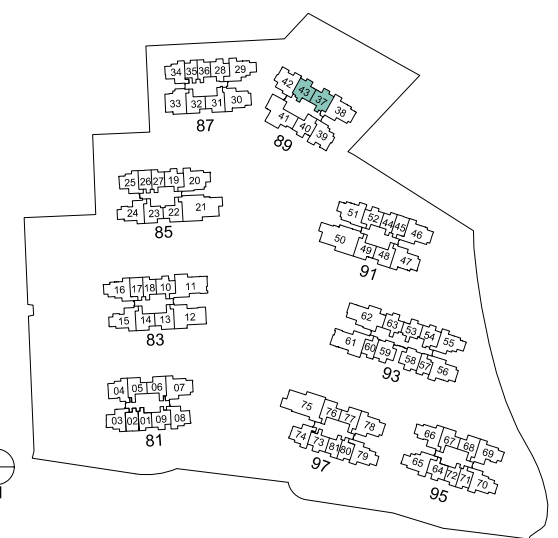
TYPE 2D2(G)  
62 sqm / 667 sqft  
#01-37 (BLOCK 89)  
#01-43\* (BLOCK 89)



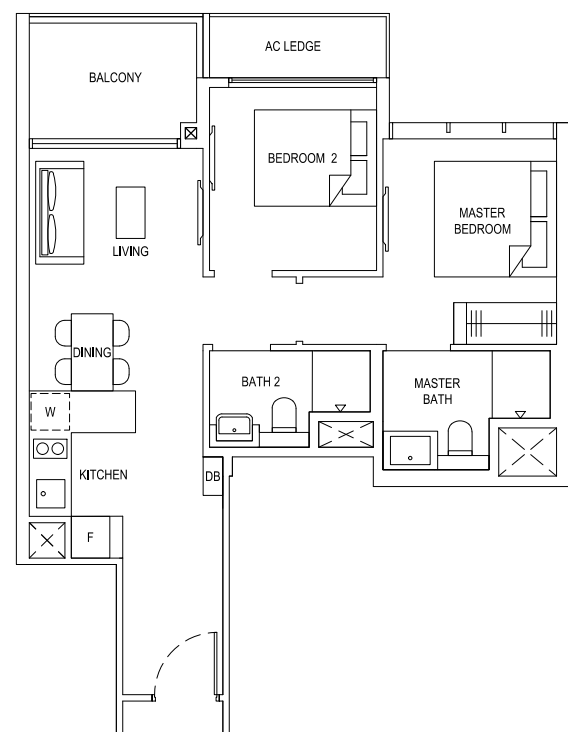
TYPE 2D2(Ph)  
76 sqm / 818 sqft (incl. void 14 sqm / 151 sqft)  
#18-37 (BLOCK 89)  
#18-43\* (BLOCK 89)



Plans are subject to change/amendments as may be required and/or approved by the Developer and/or the relevant authorities and do not form part of any offer or contract. These are not drawn to scale and are for the purpose of visual presentation only.

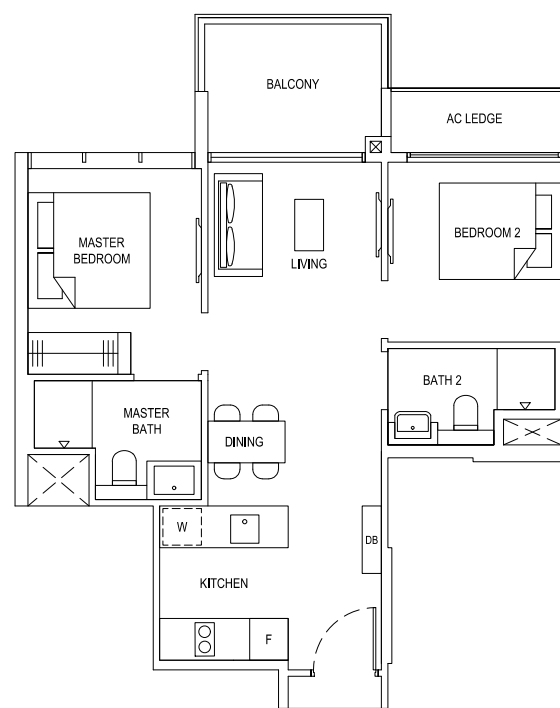


Plans are subject to change/amendments as may be required and/or approved by the Developer and/or the relevant authorities and do not form part of any offer or contract. These are not drawn to scale and are for the purpose of visual presentation only. \*Units with mirror image.



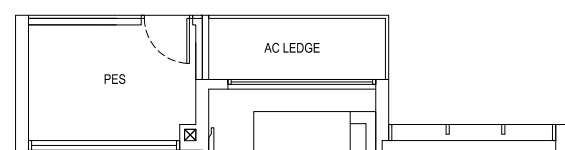
**TYPE 2D3**  
62 sqm / 667 sqft

- #03-13 to #17-13 (BLOCK 83)
- #02-14 to #17-14\* (BLOCK 83)
- #03-22 to #17-22 (BLOCK 85)
- #02-23 to #17-23\* (BLOCK 85)
- #03-31 to #17-31 (BLOCK 87)
- #02-32 to #17-32\* (BLOCK 87)
- #02-48 to #17-48 (BLOCK 91)
- #03-49 to #17-49\* (BLOCK 91)



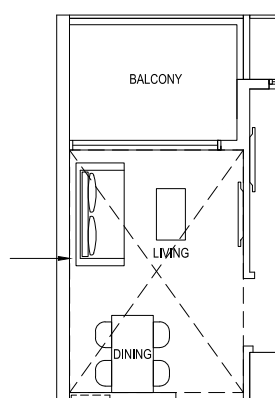
**TYPE 2D4**  
62 sqm / 667 sqft  
#02-40 to #17-40 (BLOCK 89)

**TYPE 2D3(G)**  
62 sqm / 667 sqft  
#01-14\* (BLOCK 83)  
#01-23\* (BLOCK 85)  
#01-32\* (BLOCK 87)  
#01-48 (BLOCK 91)

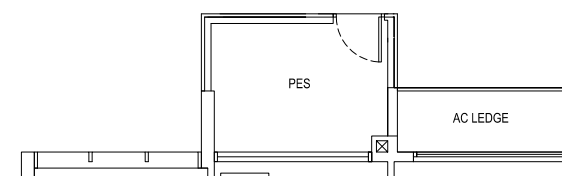


**TYPE 2D3(Ph)**  
74 sqm / 797 sqft (incl. void 12 sqm / 129 sqft)  
#18-13 (BLOCK 83)  
#18-14\* (BLOCK 83)  
#18-22 (BLOCK 85)  
#18-23\* (BLOCK 85)  
#18-31 (BLOCK 87)  
#18-32\* (BLOCK 87)  
#18-48 (BLOCK 91)  
#18-49\* (BLOCK 91)

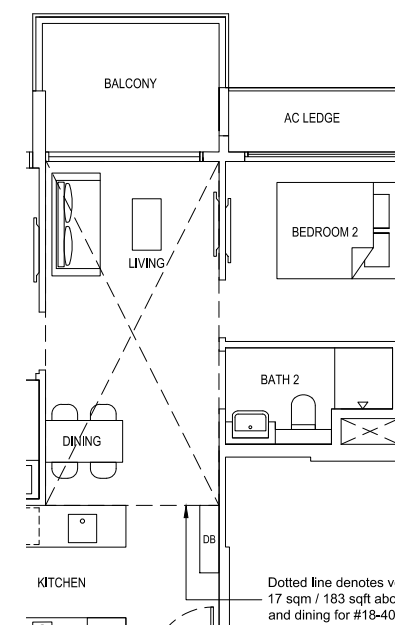
Dotted line denotes void area of 12 sqm / 129 sqft above living and dining for #18-13, #18-14, #18-22, #18-23, #18-31, #18-32, #18-48, #18-49



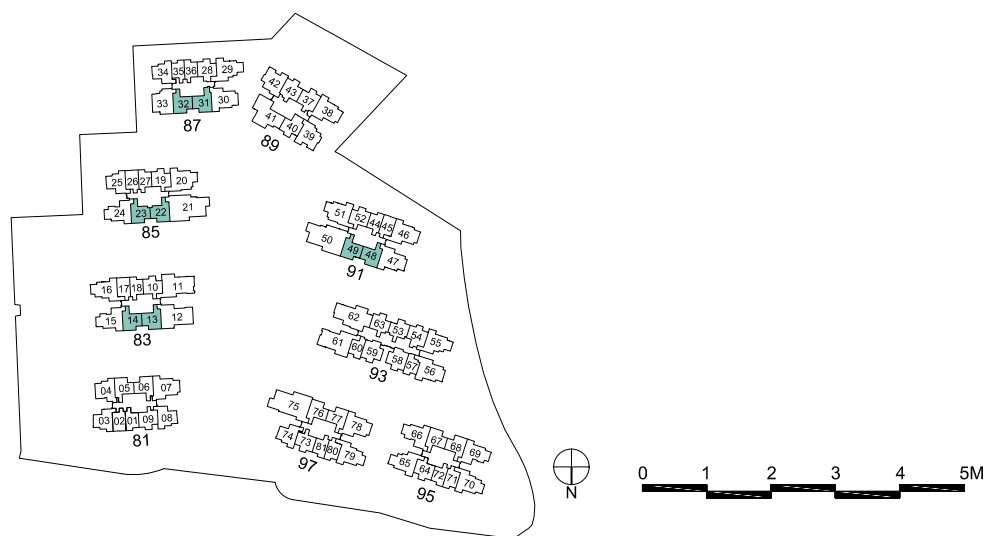
**TYPE 2D4(G)**  
62 sqm / 667 sqft  
#01-40 (BLOCK 89)



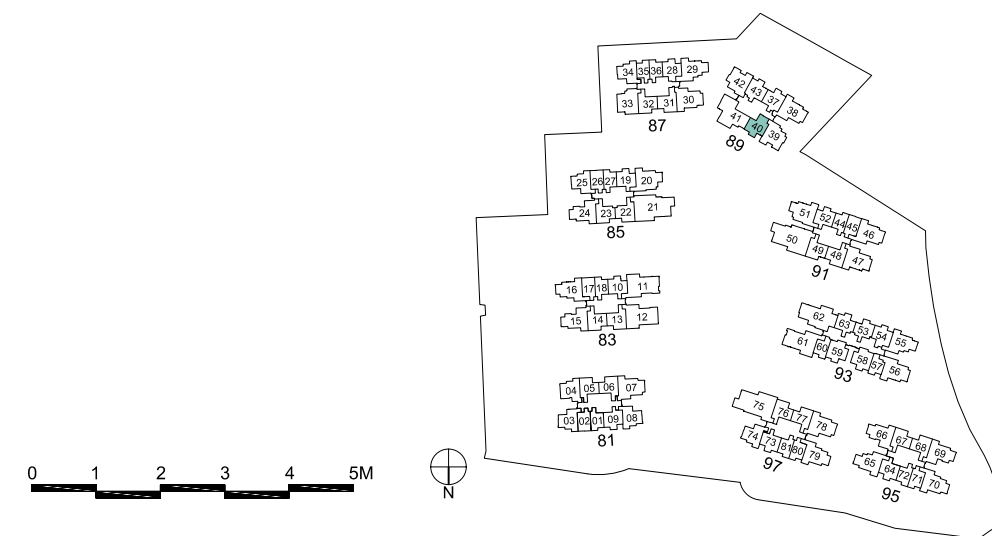
**TYPE 2D4(Ph)**  
79 sqm / 850 sqft (incl. void 17 sqm / 183 sqft)  
#18-40 (BLOCK 89)



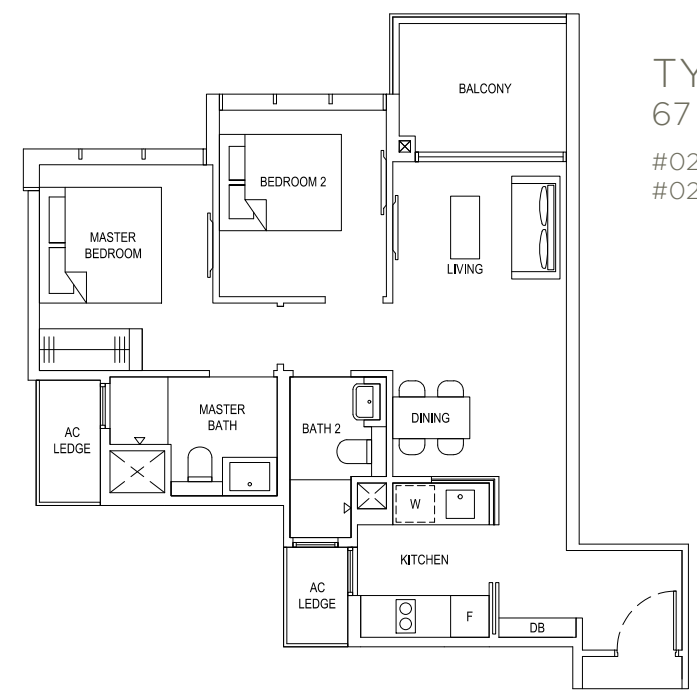
Dotted line denotes void area of 17 sqm / 183 sqft above living and dining for #18-40



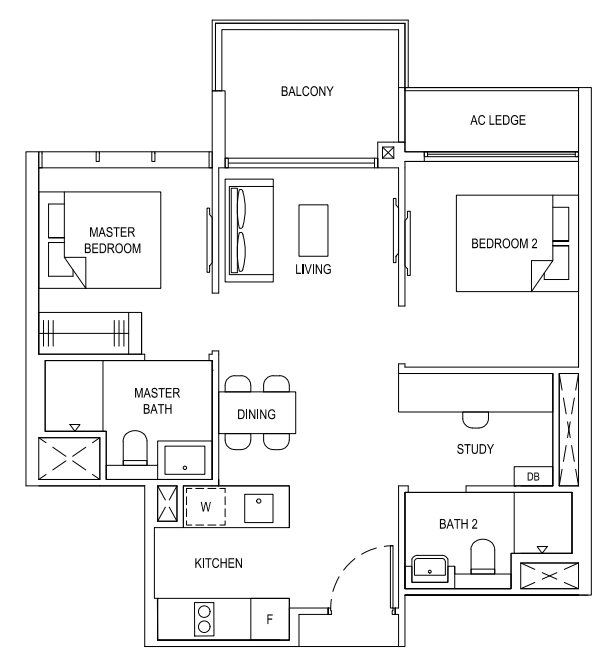
Plans are subject to change/amendments as may be required and/or approved by the Developer and/or the relevant authorities and do not form part of any offer or contract. These are not drawn to scale and are for the purpose of visual presentation only. \*Units with mirror image.



Plans are subject to change/amendments as may be required and/or approved by the Developer and/or the relevant authorities and do not form part of any offer or contract. These are not drawn to scale and are for the purpose of visual presentation only.

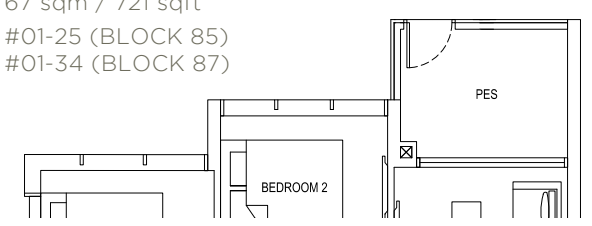


**TYPE 2D5**  
67 sqm / 721 sqft  
#02-25 to #17-25 (BLOCK 85)  
#02-34 to #17-34 (BLOCK 87)

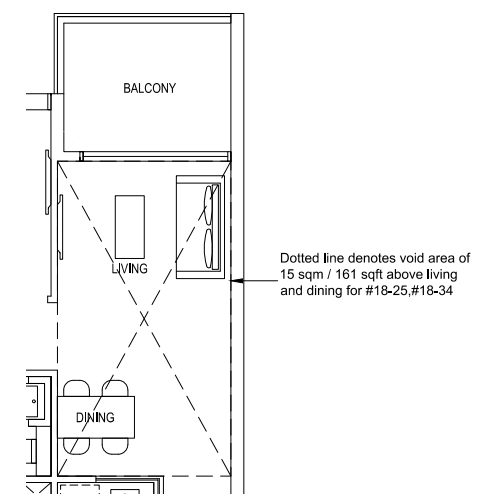


**TYPE 2S1**  
65 sqm / 700 sqft  
#02-58 to #17-58\* (BLOCK 93)  
#02-59 to #17-59 (BLOCK 93)

**TYPE 2D5(G)**  
67 sqm / 721 sqft  
#01-25 (BLOCK 85)  
#01-34 (BLOCK 87)

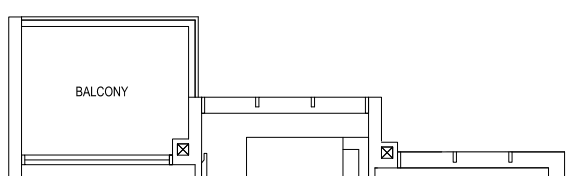


**TYPE 2D5(Ph)**  
82 sqm / 883 sqft (incl. void 15 sqm / 161 sqft)  
#18-25 (BLOCK 85)  
#18-34 (BLOCK 87)

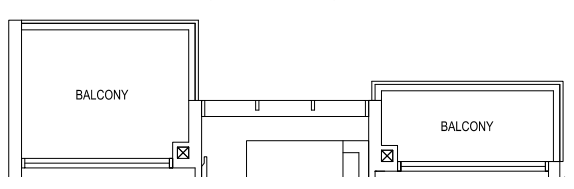


Dotted line denotes void area of 15 sqm / 161 sqft above living and dining for #18-25, #18-34

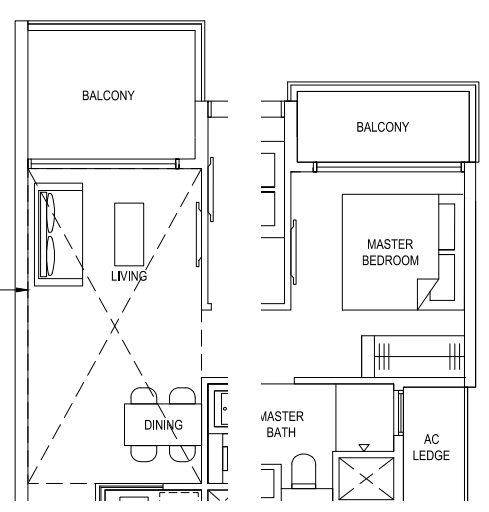
**TYPE 2D5a**  
67 sqm / 721 sqft  
#03-03 to #14-03 (BLOCK 81)  
#03-08 to #14-08\* (BLOCK 81)  
#03-74 to #14-74 (BLOCK 97)



**TYPE 2D5a(b)**  
70 sqm / 753 sqft  
#15-03 to #17-03 (BLOCK 81)  
#15-08 to #17-08\* (BLOCK 81)  
#15-74 to #17-74 (BLOCK 97)

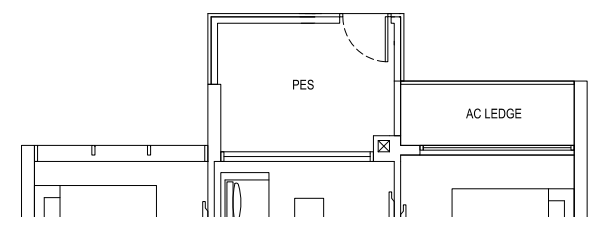


**TYPE 2D5a(Ph)**  
85 sqm / 915 sqft (incl. void 15 sqm / 161 sqft)  
#18-03 (BLOCK 81)  
#18-08\* (BLOCK 81)  
#18-74 (BLOCK 97)

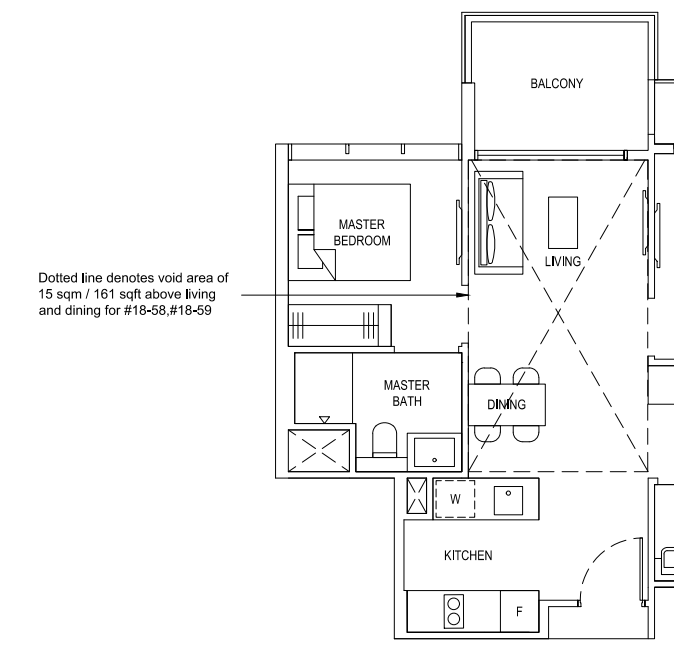


Dotted line denotes void area of 15 sqm / 161 sqft above living and dining for #18-03, #18-08, #18-74

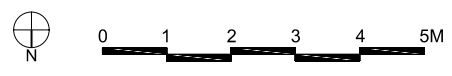
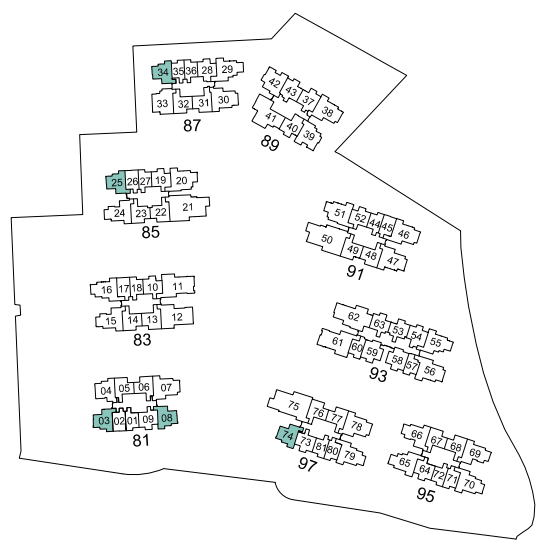
**TYPE 2S1(G)**  
65 sqm / 700 sqft  
#01-58\* (BLOCK 93)  
#01-59 (BLOCK 93)



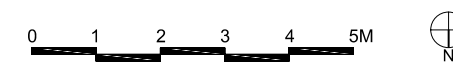
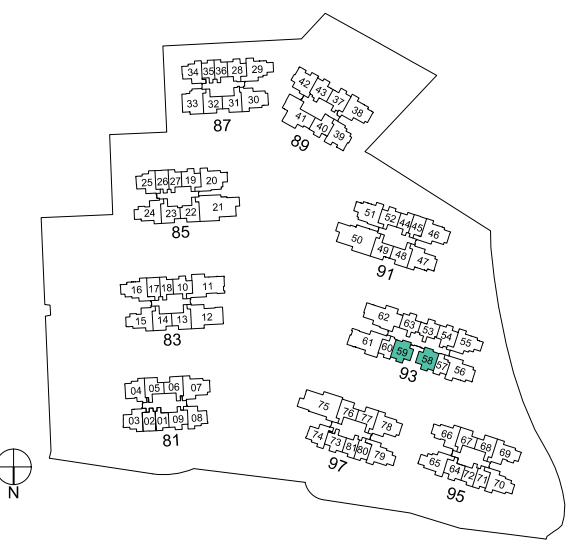
**TYPE 2S1(Ph)**  
81 sqm / 872 sqft (incl. void 15 sqm / 161 sqft)  
#18-58\* (BLOCK 93)  
#18-59 (BLOCK 93)



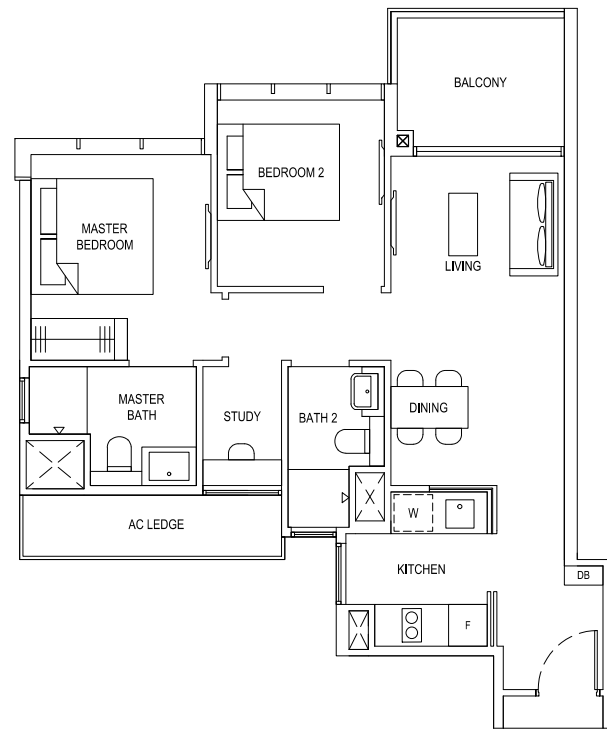
Dotted line denotes void area of 15 sqm / 161 sqft above living and dining for #18-58, #18-59



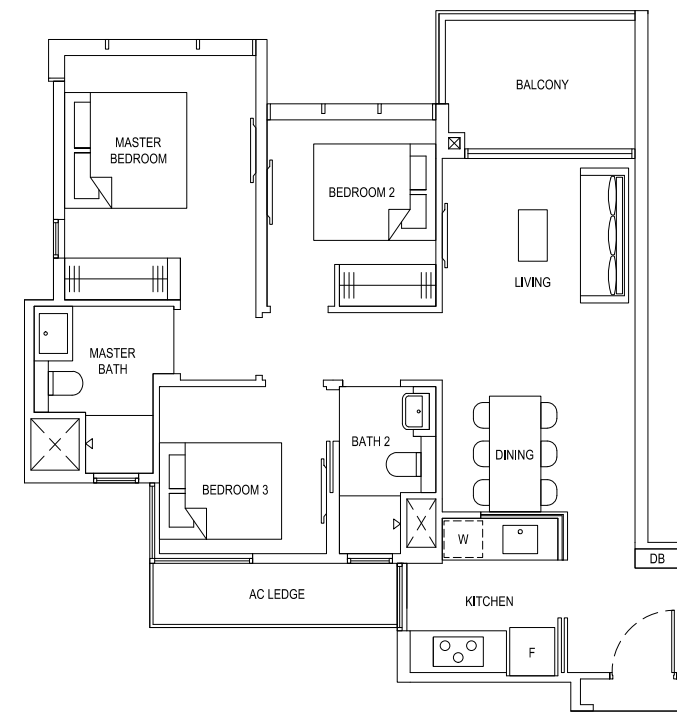
Plans are subject to change/amendments as may be required and/or approved by the Developer and/or the relevant authorities and do not form part of any offer or contract. These are not drawn to scale and are for the purpose of visual presentation only. \*Units with mirror image.



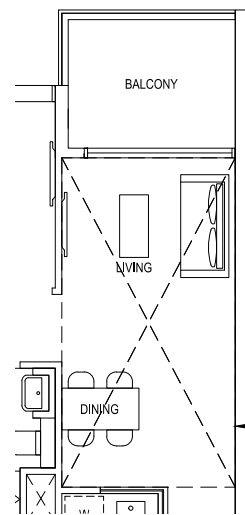
Plans are subject to change/amendments as may be required and/or approved by the Developer and/or the relevant authorities and do not form part of any offer or contract. These are not drawn to scale and are for the purpose of visual presentation only. \*Units with mirror image.



TYPE 2S2  
70 sqm / 753 sqft  
#03-04 to #17-04 (BLOCK 81)

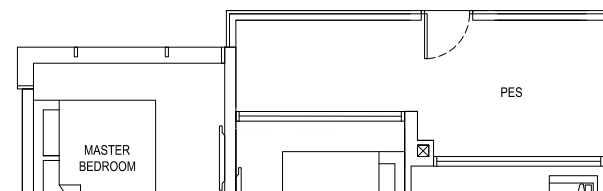


TYPE 3C1  
83 sqm / 893 sqft  
#02-42 to #17-42 (BLOCK 89)

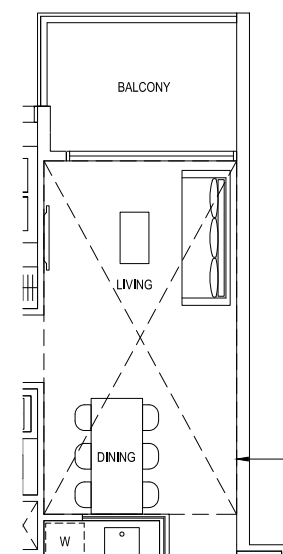


TYPE 2S2(Ph)  
86 sqm / 926 sqft (incl. void 16 sqm / 172 sqft)  
#18-04 (BLOCK 81)

Dotted line denotes void area of 16 sqm / 172 sqft above living and dining for #18-04

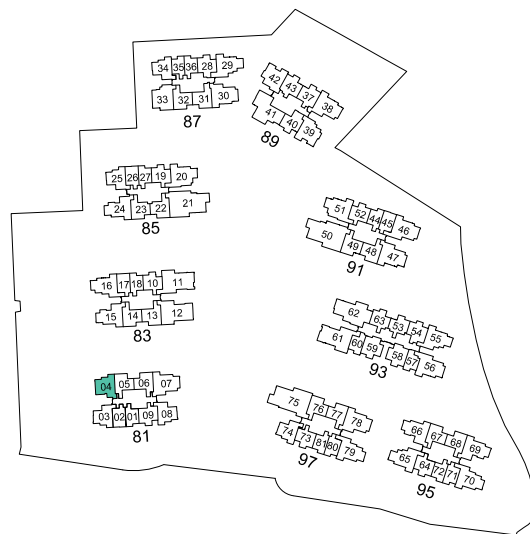


TYPE 3C1(G)  
88 sqm / 947 sqft  
#01-42 (BLOCK 89)

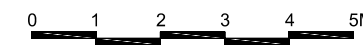
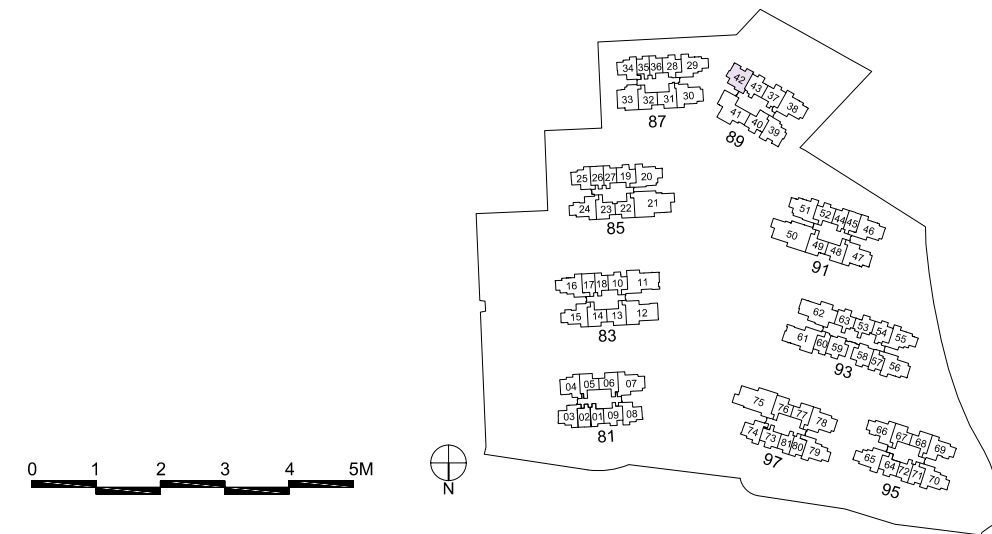


TYPE 3C1(Ph)  
101 sqm / 1087 sqft (incl. void 18 sqm / 194 sqft)  
#18-42 (BLOCK 89)

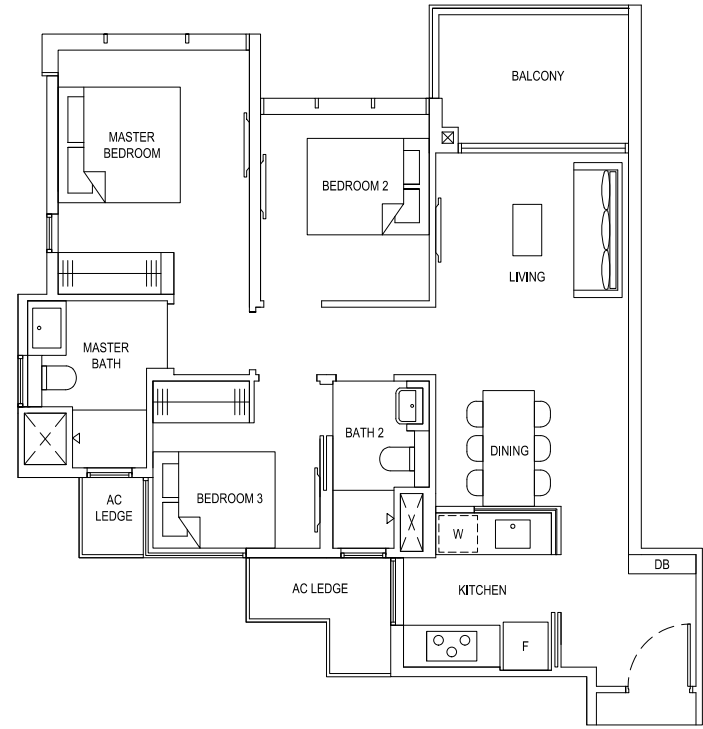
Dotted line denotes void area of 18 sqm / 194 sqft above living and dining for #18-42



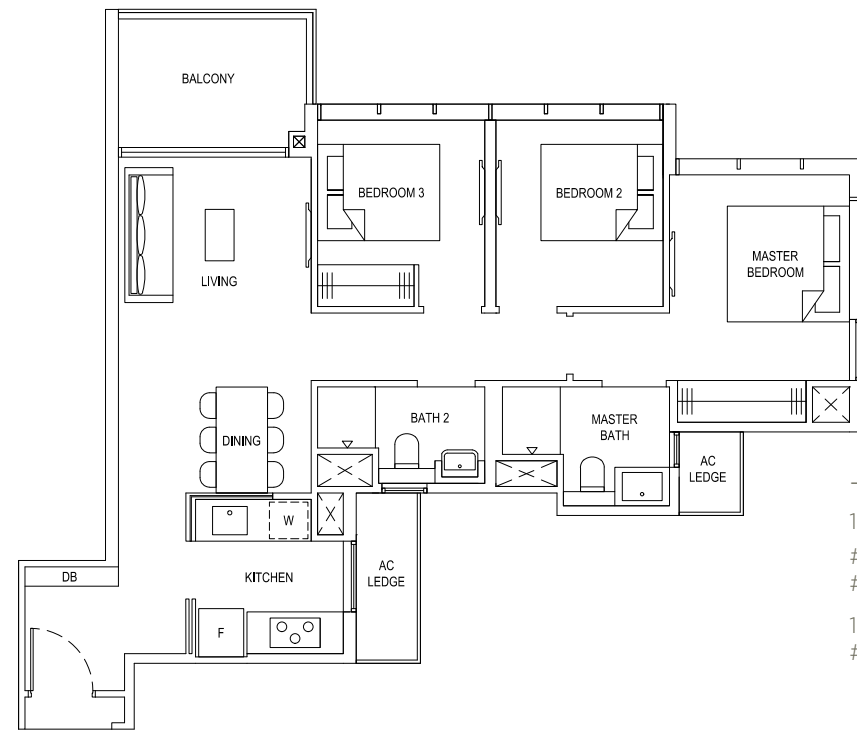
Plans are subject to change/amendments as may be required and/or approved by the Developer and/or the relevant authorities and do not form part of any offer or contract. These are not drawn to scale and are for the purpose of visual presentation only.



Plans are subject to change/amendments as may be required and/or approved by the Developer and/or the relevant authorities and do not form part of any offer or contract. These are not drawn to scale and are for the purpose of visual presentation only.



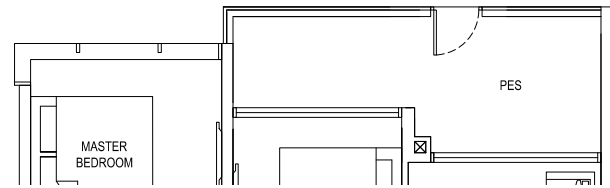
**TYPE 3C2**  
85 sqm / 915 sqft  
#02-39 to #17-39 (BLOCK 89)



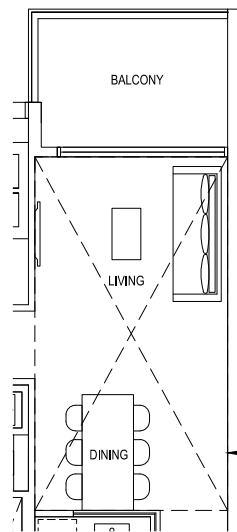
**TYPE 3C3**  
86 sqm / 926 sqft  
#02-15 to #17-15 (BLOCK 83)  
#02-24 to #17-24 (BLOCK 85)  
#03-66 to #17-66\* (BLOCK 95)

**TYPE 3C3(Ph)**  
103 sqm / 1109 sqft (incl. void 17 sqm / 183 sqft)  
#18-15 (BLOCK 83)  
#18-24 (BLOCK 85)  
104 sqm / 1119 sqft (incl. void 18 sqm / 194 sqft)  
#18-66\* (BLOCK 95)

**TYPE 3C2(G)**  
90 sqm / 969 sqft  
#01-39 (BLOCK 89)

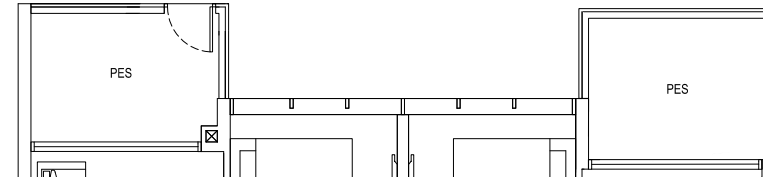


**TYPE 3C2(Ph)**  
103 sqm / 1109 sqft (incl. void 18 sqm / 194 sqft)  
#18-39 (BLOCK 89)

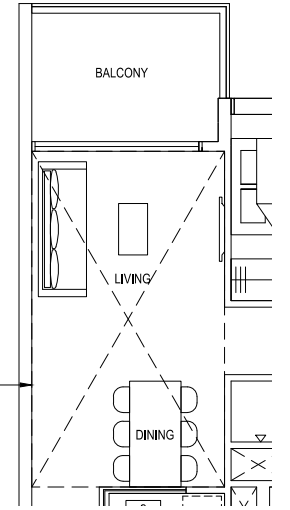


Dotted line denotes void area of 18 sqm / 194 sqft above living and dining for #18-39

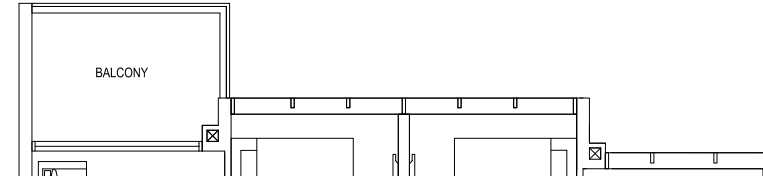
**TYPE 3C3(G)**  
93 sqm / 1001 sqft  
#01-15 (BLOCK 83), #01-24 (BLOCK 85)



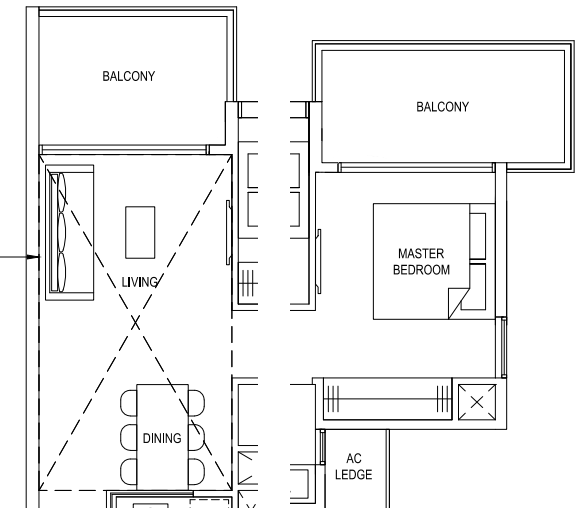
Dotted line denotes void area of 17 sqm / 183 sqft above living and dining for #18-15, #18-24; and 18 sqm / 194 sqft above living and dining for #18-66



**TYPE 3C3a**  
86 sqm / 926 sqft  
#02-69 to #14-69 (BLOCK 95)

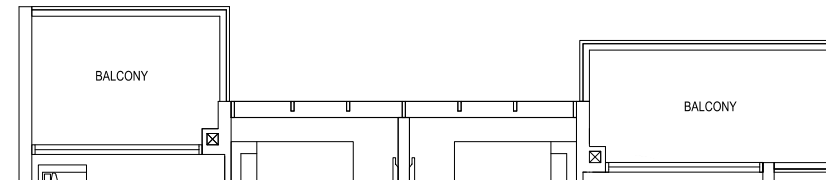


**TYPE 3C3a(Ph)**  
110 sqm / 1184 sqft (incl. void 17 sqm / 183 sqft)  
#18-69 (BLOCK 95)

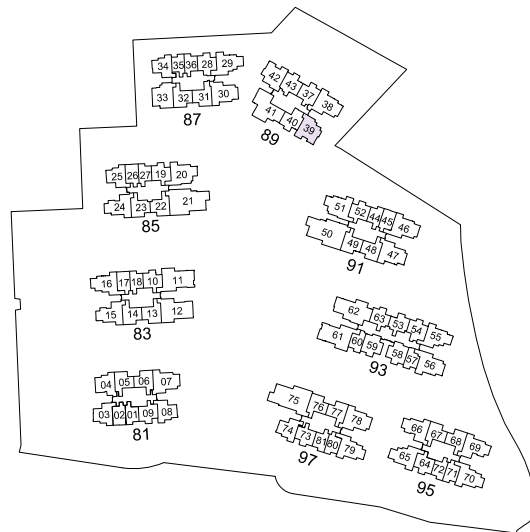
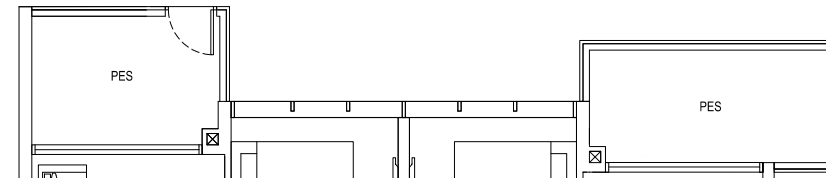


Dotted line denotes void area of 17 sqm / 183 sqft above living and dining for #18-69

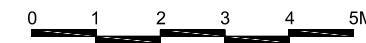
**TYPE 3C3a(b)**  
93 sqm / 1001 sqft  
#15-69 to #17-69 (BLOCK 95)



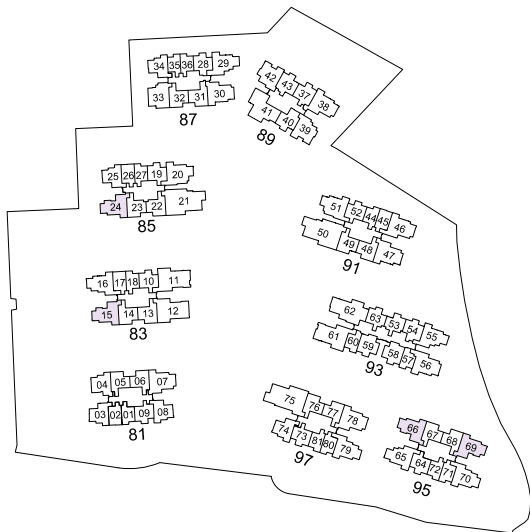
**TYPE 3C3a(G)**  
93 sqm / 1001 sqft  
#01-69 (BLOCK 95)



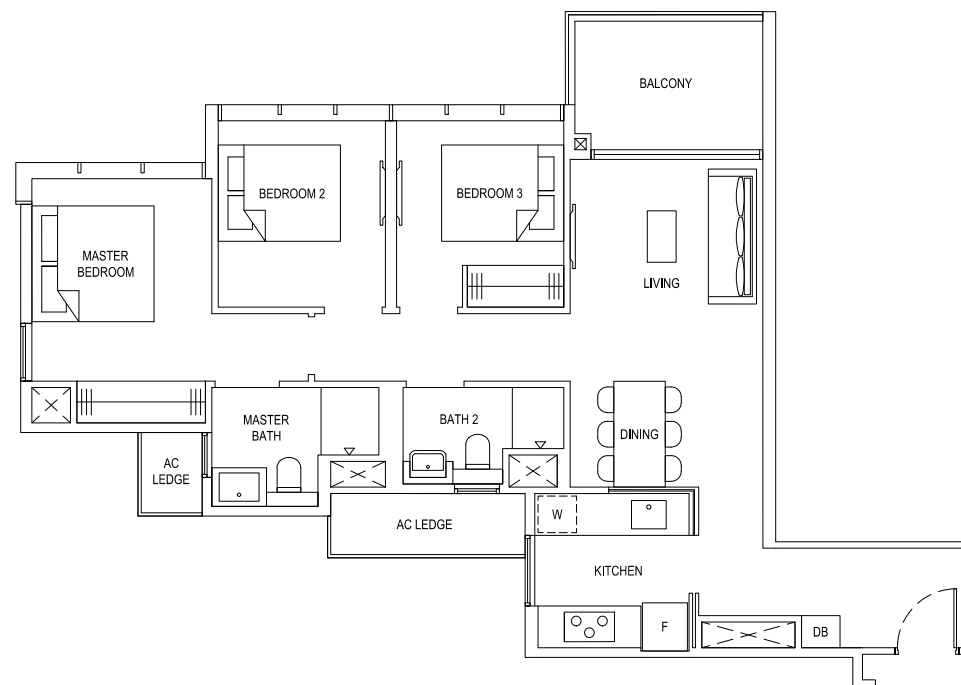
Plans are subject to change/amendments as may be required and/or approved by the Developer and/or the relevant authorities and do not form part of any offer or contract. These are not drawn to scale and are for the purpose of visual presentation only.



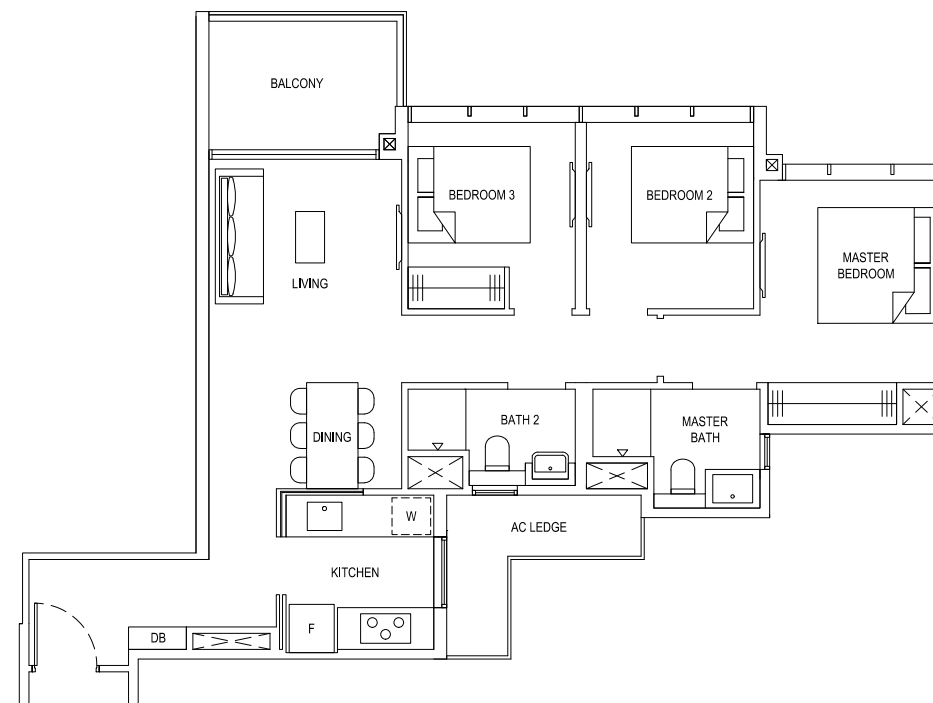
Plans are subject to change/amendments as may be required and/or approved by the Developer and/or the relevant authorities and do not form part of any offer or contract. These are not drawn to scale and are for the purpose of visual presentation only. \*Units with mirror image.





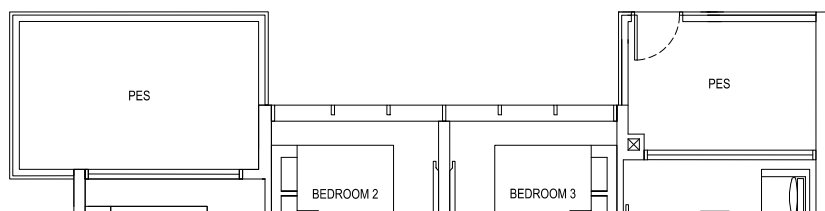


**TYPE 3C4**  
87 sqm / 936 sqft  
#02-16 to #17-16 (BLOCK 83)  
#02-79 to #17-79 (BLOCK 97)

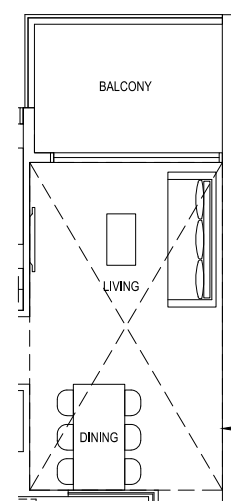


**TYPE 3C5a**  
87 sqm / 936 sqft  
#02-55 to #14-55 (BLOCK 93)

**TYPE 3C4(G)**  
97 sqm / 1044 sqft  
#01-16 (BLOCK 83), #01-79 (BLOCK 97)

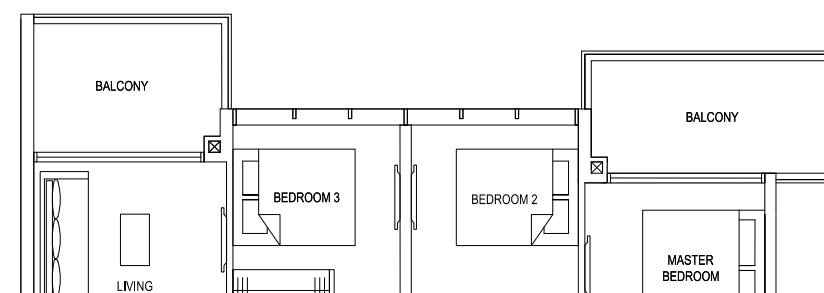


**TYPE 3C4(PH)**  
104 sqm / 1119 sqft  
(incl. void 17 sqm / 183 sqft)  
#18-16 (BLOCK 83)  
#18-79 (BLOCK 97)

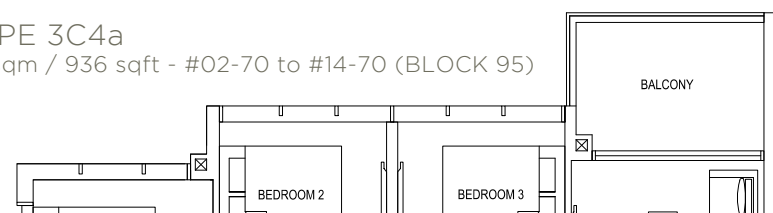


Dotted line denotes void area of 17 sqm / 183 sqft above living and dining for #18-16, #18-79

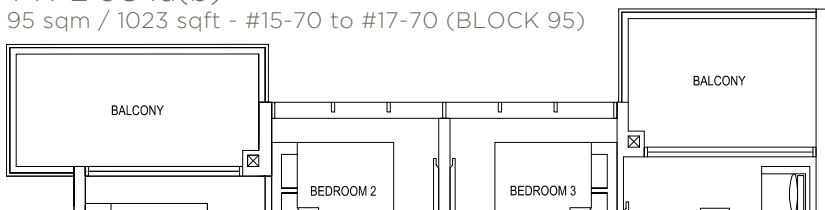
**TYPE 3C5a(b)**  
95 sqm / 1023 sqft  
#15-55 to #17-55 (BLOCK 93)



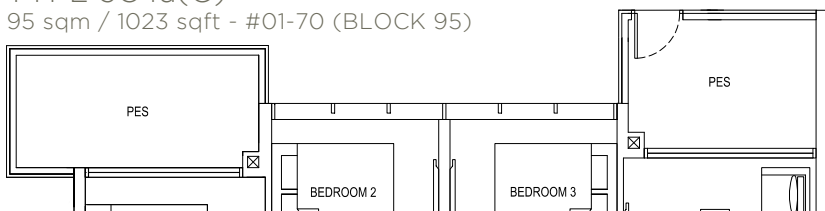
**TYPE 3C4a**  
87 sqm / 936 sqft - #02-70 to #14-70 (BLOCK 95)



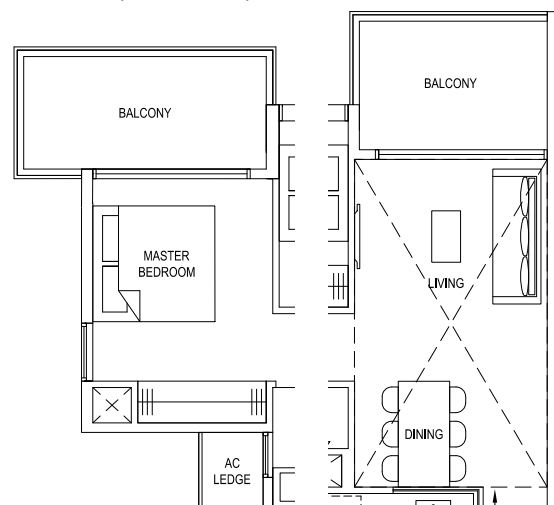
**TYPE 3C4a(b)**  
95 sqm / 1023 sqft - #15-70 to #17-70 (BLOCK 95)



**TYPE 3C4a(G)**  
95 sqm / 1023 sqft - #01-70 (BLOCK 95)

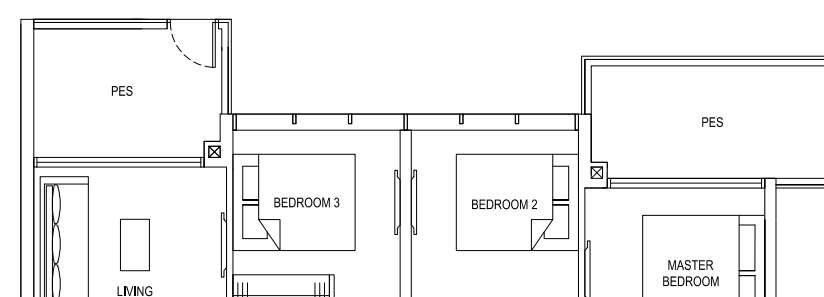


**TYPE 3C4a(PH)**  
112 sqm / 1206 sqft  
(incl. void 17 sqm / 183 sqft)  
#18-70 (BLOCK 95)

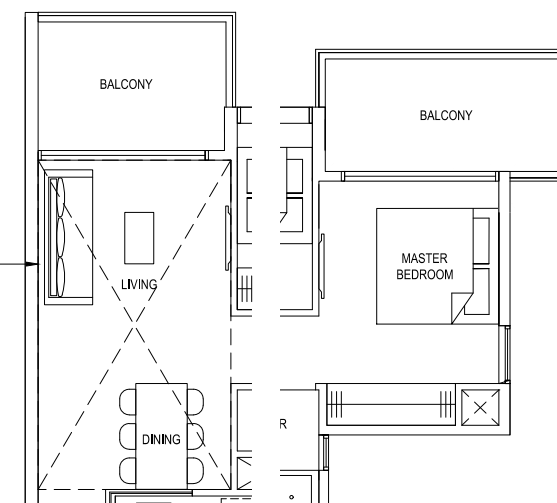


Dotted line denotes void area of 17 sqm / 183 sqft above living and dining for #18-70

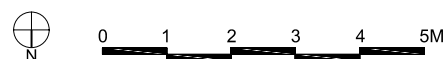
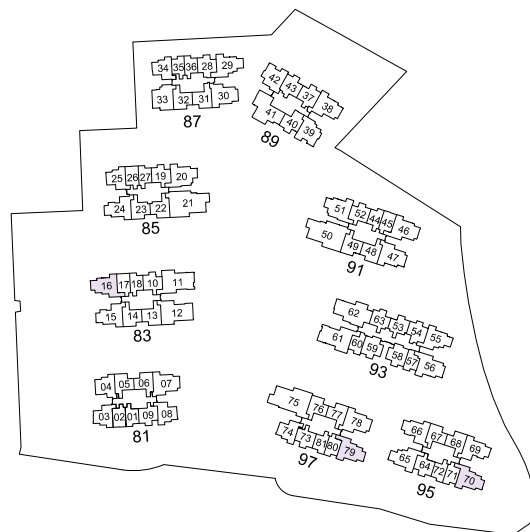
**TYPE 3C5a(G)**  
95 sqm / 1023 sqft  
#01-55 (BLOCK 93)



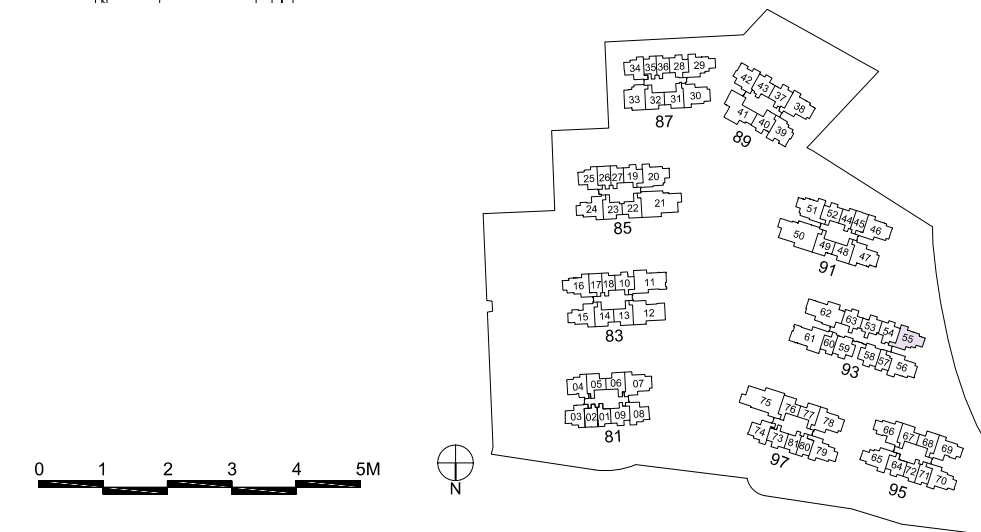
**TYPE 3C5a(Ph)**  
112 sqm / 1206 sqft  
(incl. void 17 sqm / 183 sqft)  
#18-55 (BLOCK 93)



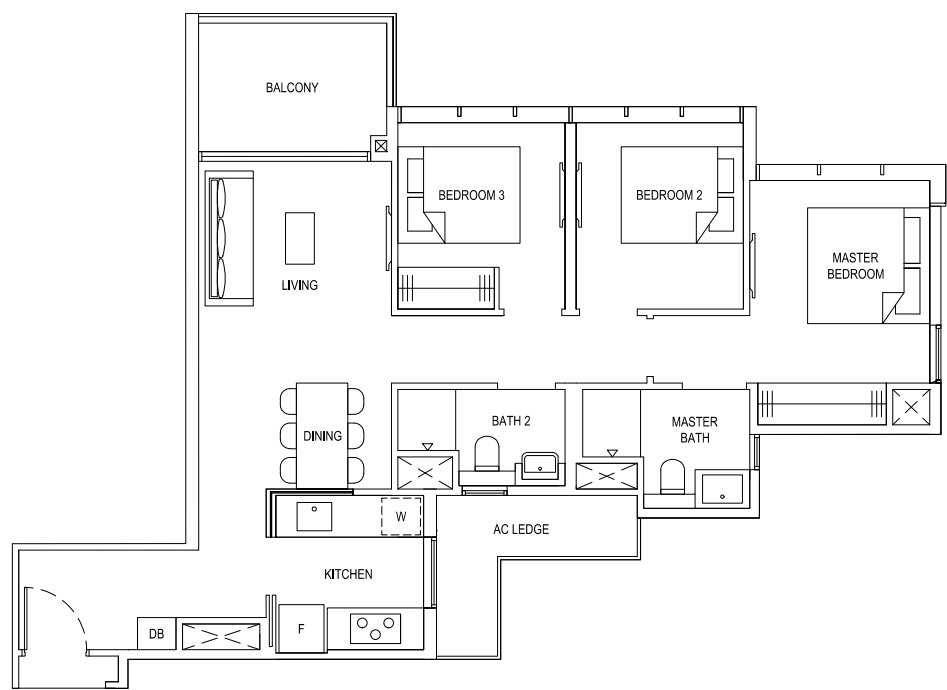
Dotted line denotes void area of 17 sqm / 183 sqft above living and dining for #18-55



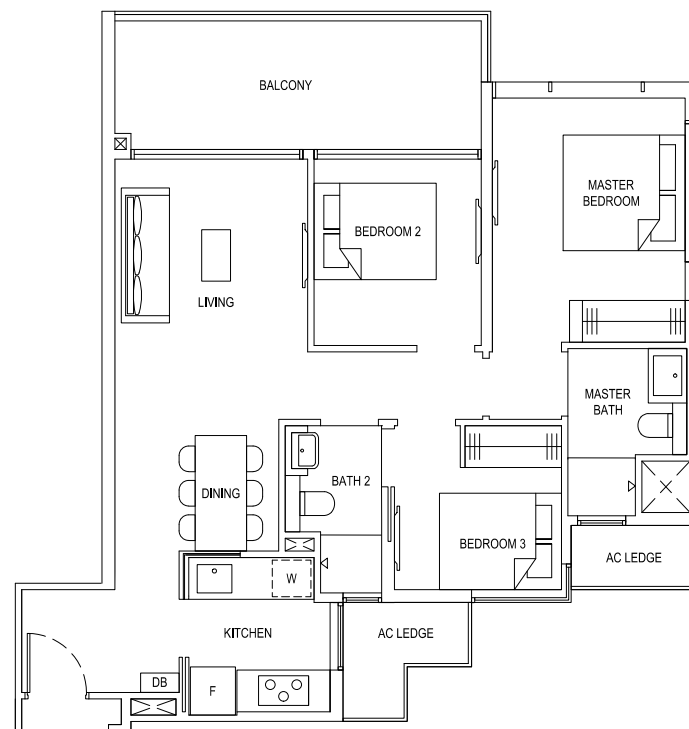
Plans are subject to change/amendments as may be required and/or approved by the Developer and/or the relevant authorities and do not form part of any offer or contract. These are not drawn to scale and are for the purpose of visual presentation only.



Plans are subject to change/amendments as may be required and/or approved by the Developer and/or the relevant authorities and do not form part of any offer or contract. These are not drawn to scale and are for the purpose of visual presentation only.

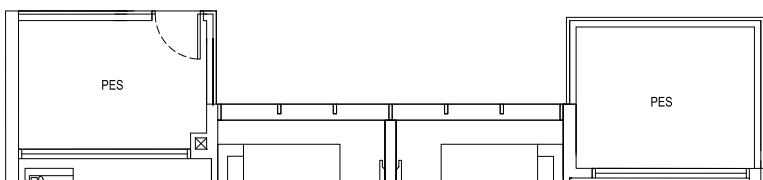


TYPE 3C6  
87 sqm / 936 sqft  
#02-65 to #17-65 (BLOCK 95)

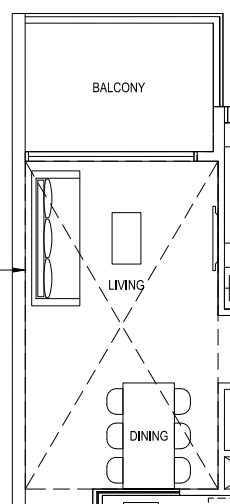


TYPE 3C7  
91 sqm / 980 sqft  
#02-33 to #17-33 (BLOCK 87)

TYPE 3C6(G)  
94 sqm / 1012 sqft - #01-65 (BLOCK 95)

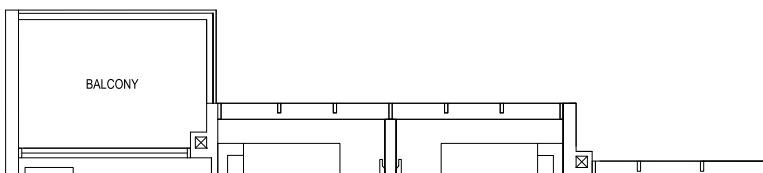


TYPE 3C6(Ph)  
104 sqm / 1119 sqft  
(incl. void 17 sqm / 183 sqft)  
#18-65 (BLOCK 95)

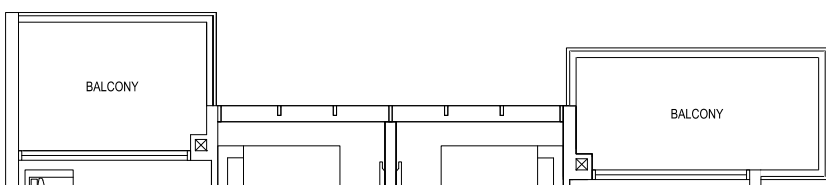


Dotted line denotes void area of 17 sqm / 183 sqft above living and dining for #18-65

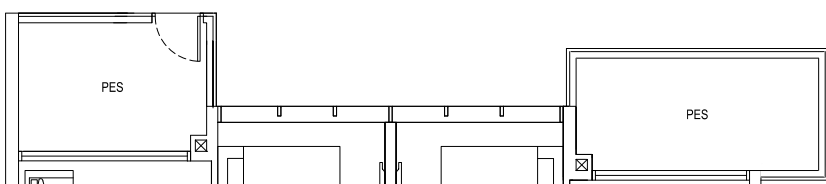
TYPE 3C6a  
87 sqm / 936 sqft - #02-29 to #14-29 (BLOCK 87)



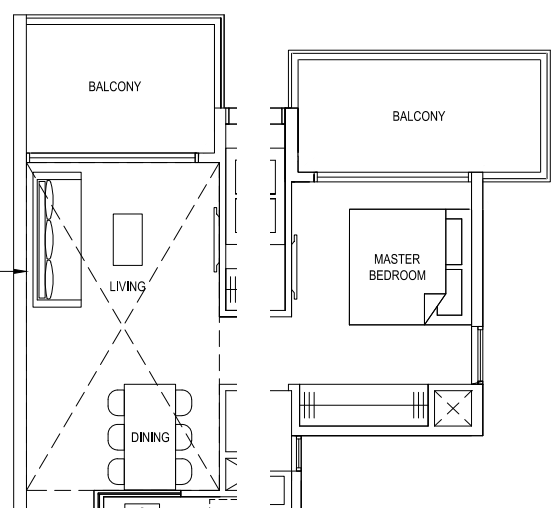
TYPE 3C6a(b)  
94 sqm / 1012 sqft - #15-29 to #17-29 (BLOCK 87)



TYPE 3C6a(G)  
95 sqm / 1023 sqft - #01-29 (BLOCK 87)

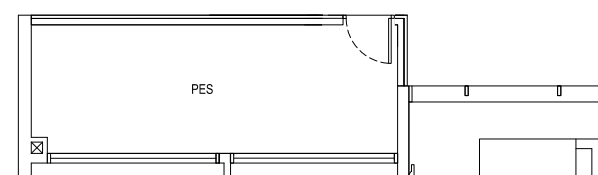


TYPE 3C6a(Ph)  
111 sqm / 1195 sqft  
(incl. void 17 sqm / 183 sqft)  
#18-29 (BLOCK 87)

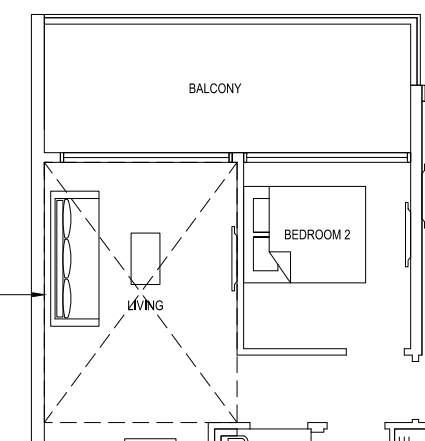


Dotted line denotes void area of 17 sqm / 183 sqft above living and dining for #18-29

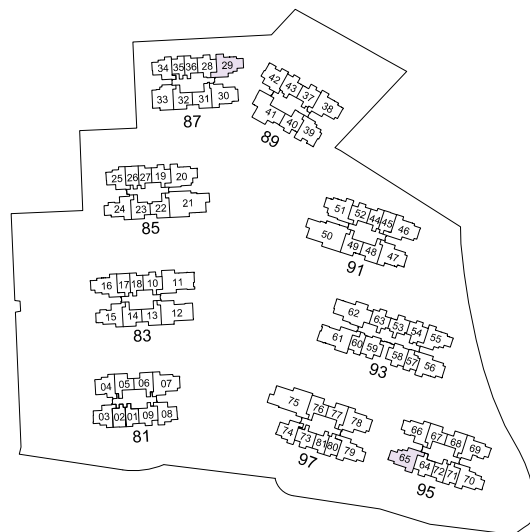
TYPE 3C7(G)  
91 sqm / 980 sqft  
#01-33 (BLOCK 87)



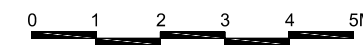
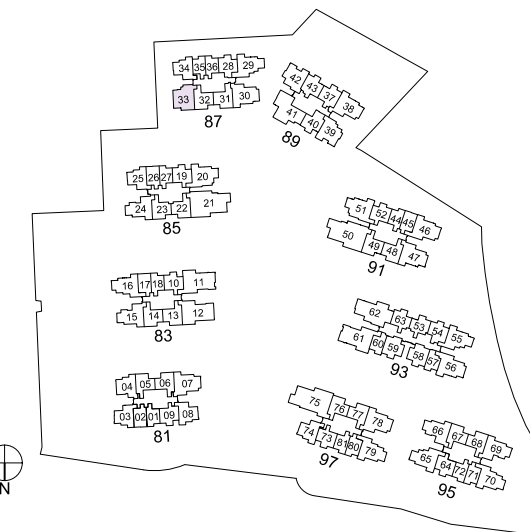
TYPE 3C7(Ph)  
105 sqm / 1130 sqft  
(incl. void 14 sqm / 151 sqft)  
#18-33 (BLOCK 87)



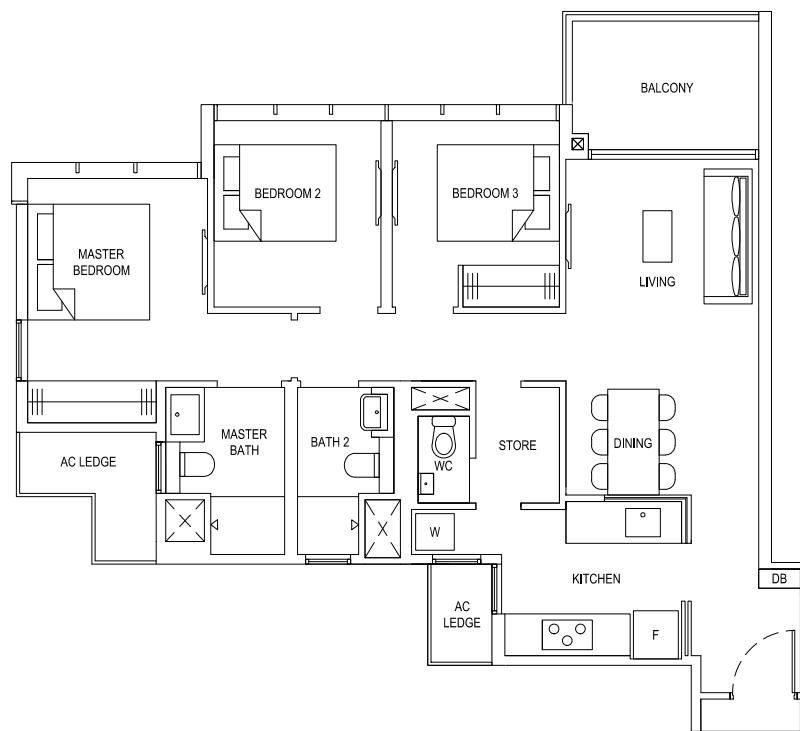
Dotted line denotes void area of 14 sqm / 151 sqft above living and dining for #18-33



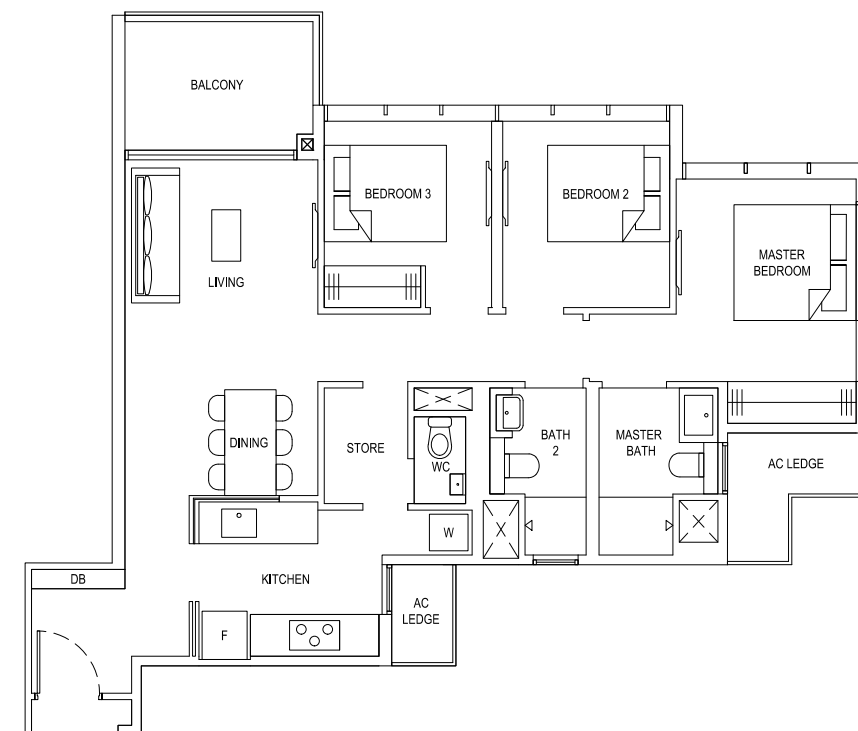
Plans are subject to change/amendments as may be required and/or approved by the Developer and/or the relevant authorities and do not form part of any offer or contract. These are not drawn to scale and are for the purpose of visual presentation only.



Plans are subject to change/amendments as may be required and/or approved by the Developer and/or the relevant authorities and do not form part of any offer or contract. These are not drawn to scale and are for the purpose of visual presentation only.



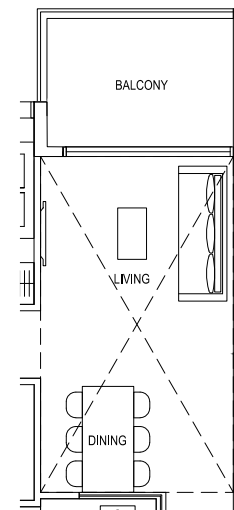
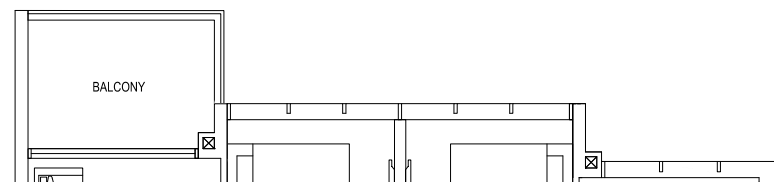
TYPE 3D1  
92 sqm / 990 sqft  
#03-30 to #17-30 (BLOCK 87)



TYPE 3D2  
94 sqm / 1012 sqft  
#02-78 to #17-78 (BLOCK 97)

TYPE 3D2(Ph)  
111 sqm / 1195 sqft  
(incl. void 17 sqm / 183 sqft)  
#18-78 (BLOCK 97)

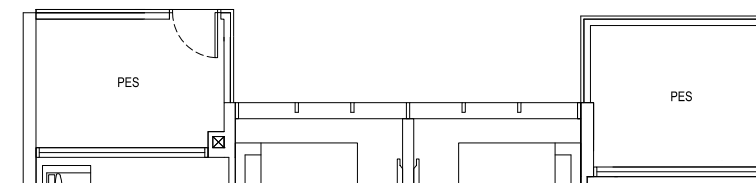
TYPE 3D1a  
92 sqm / 990 sqft - #03-07 to #14-07 (BLOCK 81)



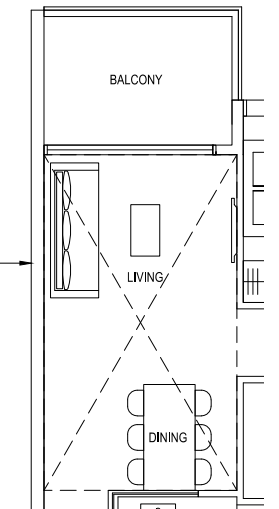
TYPE 3D1(Ph)  
110 sqm / 1184 sqft  
(incl. void 18 sqm / 194 sqft)  
#18-30 (BLOCK 87)

Dotted line denotes void area of 18 sqm / 194 sqft above living and dining for #18-30

TYPE 3D2(G)  
101 sqm / 1087 sqft  
#01-78 (BLOCK 97)

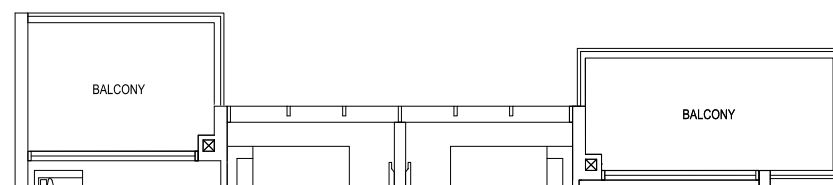


Dotted line denotes void area of 17 sqm / 183 sqft above living and dining for #18-78

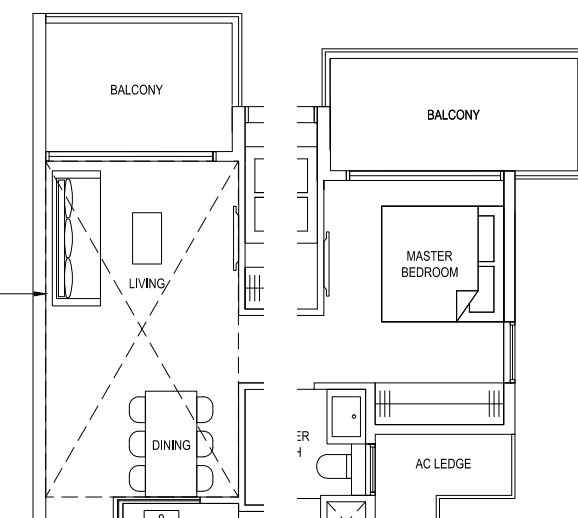


TYPE 3D2a(Ph)  
118 sqm / 1270 sqft (incl. void 17 sqm / 183 sqft)  
#18-47 (BLOCK 91)

TYPE 3D1a(b)  
100 sqm / 1076 sqft - #15-07 to #17-07 (BLOCK 81)

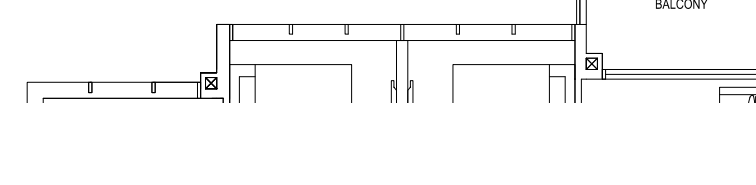


TYPE 3D1a(Ph)  
118 sqm / 1270 sqft  
(incl. void 18 sqm / 194 sqft)  
#18-07 (BLOCK 81)

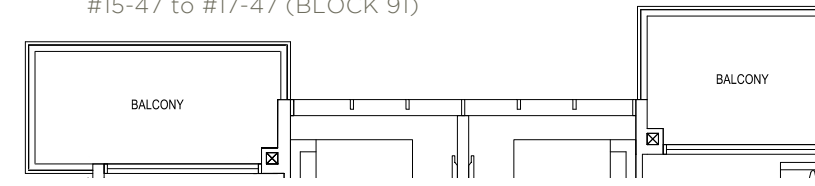


Dotted line denotes void area of 18 sqm / 194 sqft above living and dining for #18-07

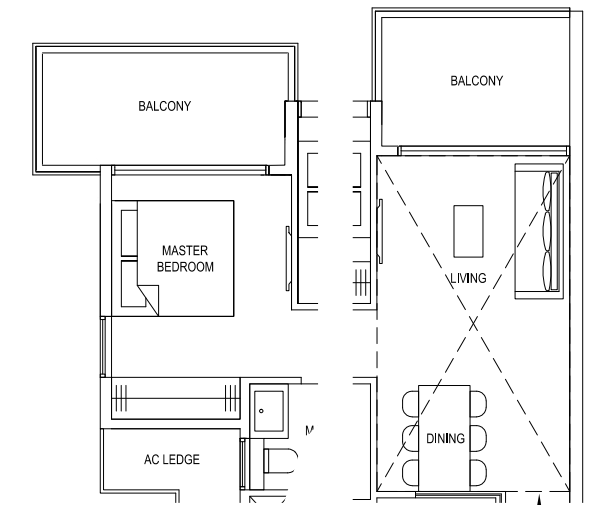
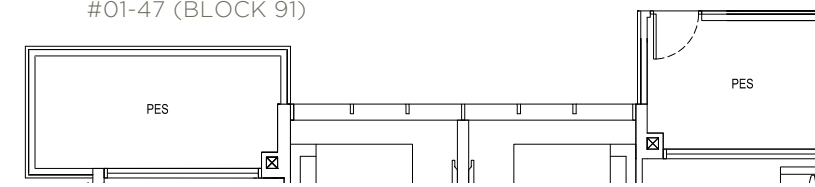
TYPE 3D2a  
94 sqm / 1012 sqft  
#02-47 to #14-47 (BLOCK 91)



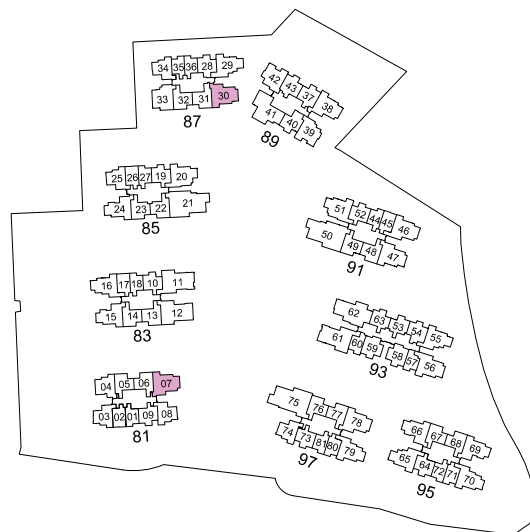
TYPE 3D2a(b)  
101 sqm / 1087 sqft  
#15-47 to #17-47 (BLOCK 91)



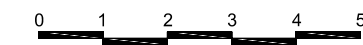
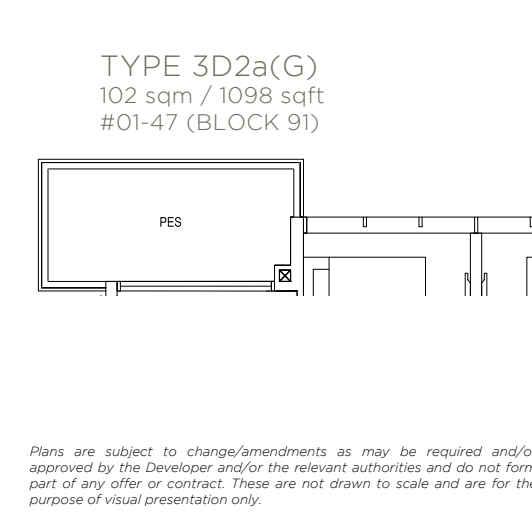
TYPE 3D2a(G)  
102 sqm / 1098 sqft  
#01-47 (BLOCK 91)



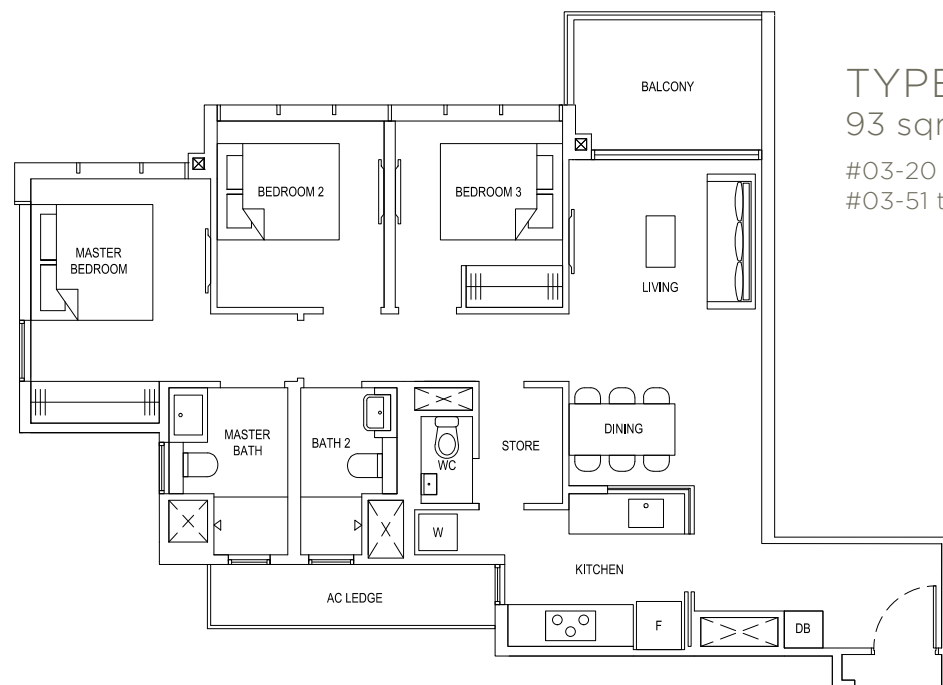
Dotted line denotes void area of 17 sqm / 183 sqft above living and dining for #18-47



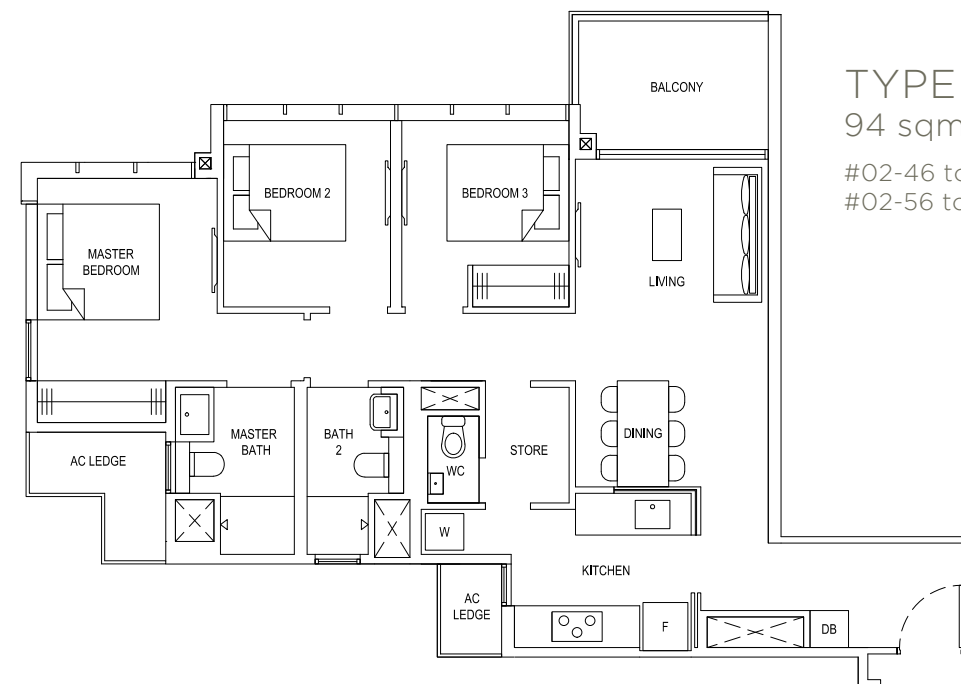
Plans are subject to change/amendments as may be required and/or approved by the Developer and/or the relevant authorities and do not form part of any offer or contract. These are not drawn to scale and are for the purpose of visual presentation only.



Plans are subject to change/amendments as may be required and/or approved by the Developer and/or the relevant authorities and do not form part of any offer or contract. These are not drawn to scale and are for the purpose of visual presentation only.

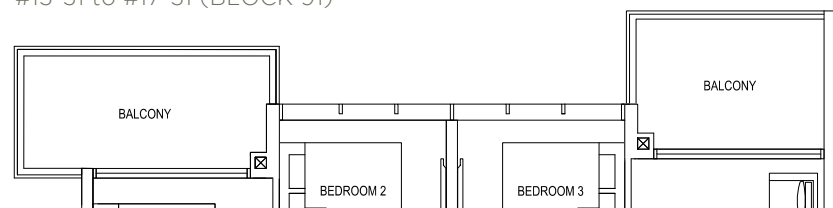


**TYPE 3D3a**  
93 sqm / 1001 sqft  
#03-20 to #14-20\* (BLOCK 85)  
#03-51 to #14-51 (BLOCK 91)

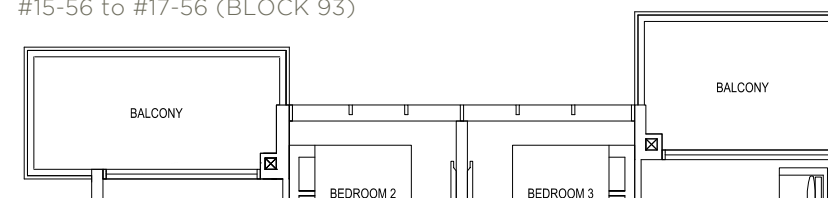


**TYPE 3D4a**  
94 sqm / 1012 sqft  
#02-46 to #14-46\* (BLOCK 91)  
#02-56 to #14-56 (BLOCK 93)

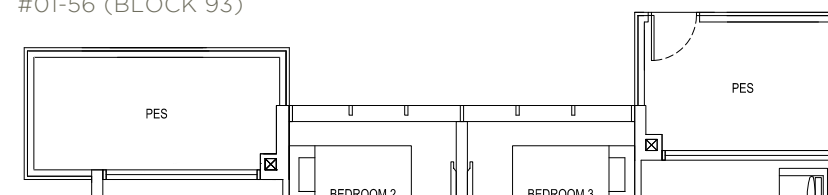
**TYPE 3D3a(b)**  
101 sqm / 1087 sqft  
#15-20 to #17-20\* (BLOCK 85)  
#15-51 to #17-51 (BLOCK 91)



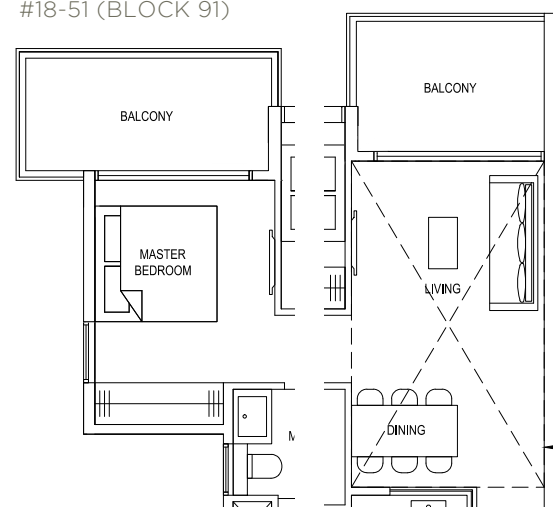
**TYPE 3D4a(b)**  
102 sqm / 1098 sqft  
#15-46 to #17-46\* (BLOCK 91)  
#15-56 to #17-56 (BLOCK 93)



**TYPE 3D4a(G)**  
102 sqm / 1098 sqft  
#01-46\* (BLOCK 91)  
#01-56 (BLOCK 93)

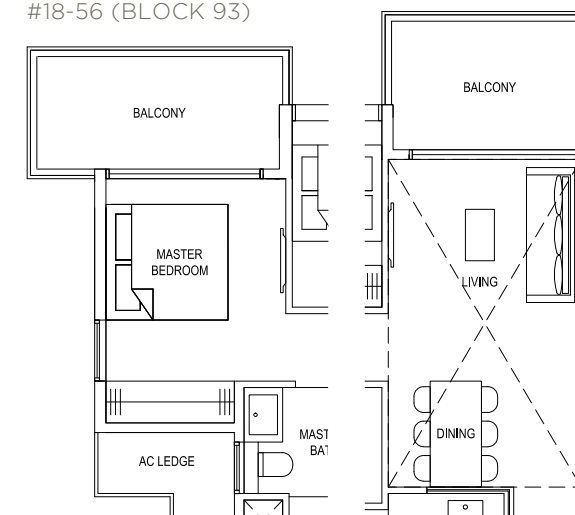


**TYPE 3D3a(Ph)**  
118 sqm / 1270 sqft  
(incl. void 17 sqm / 183 sqft)  
#18-20\* (BLOCK 85)  
#18-51 (BLOCK 91)

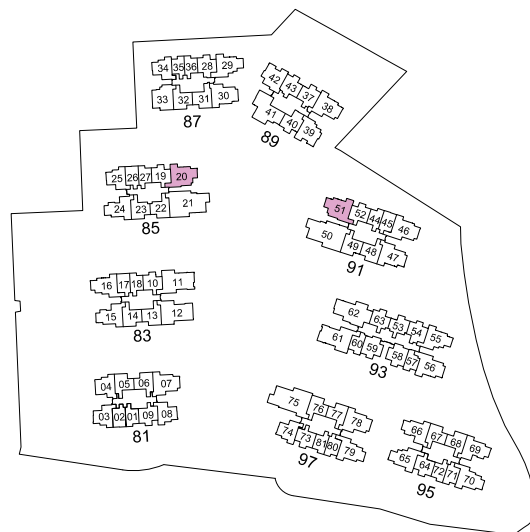


Dotted line denotes void area of 17 sqm / 183 sqft above living and dining for #18-20, #18-51

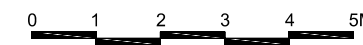
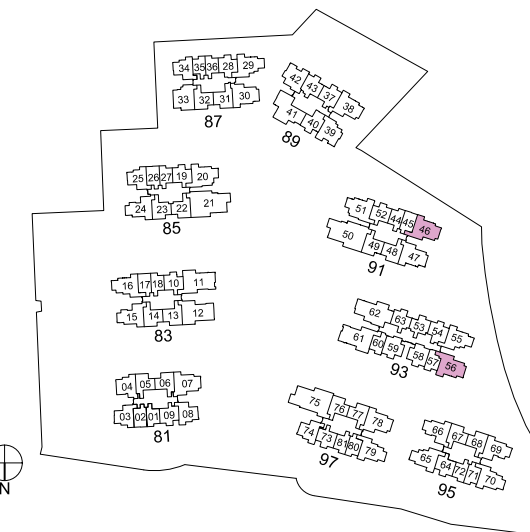
**TYPE 3D4a(Ph)**  
119 sqm / 1281 sqft  
(incl. void 17 sqm / 183 sqft)  
#18-46\* (BLOCK 91)  
#18-56 (BLOCK 93)



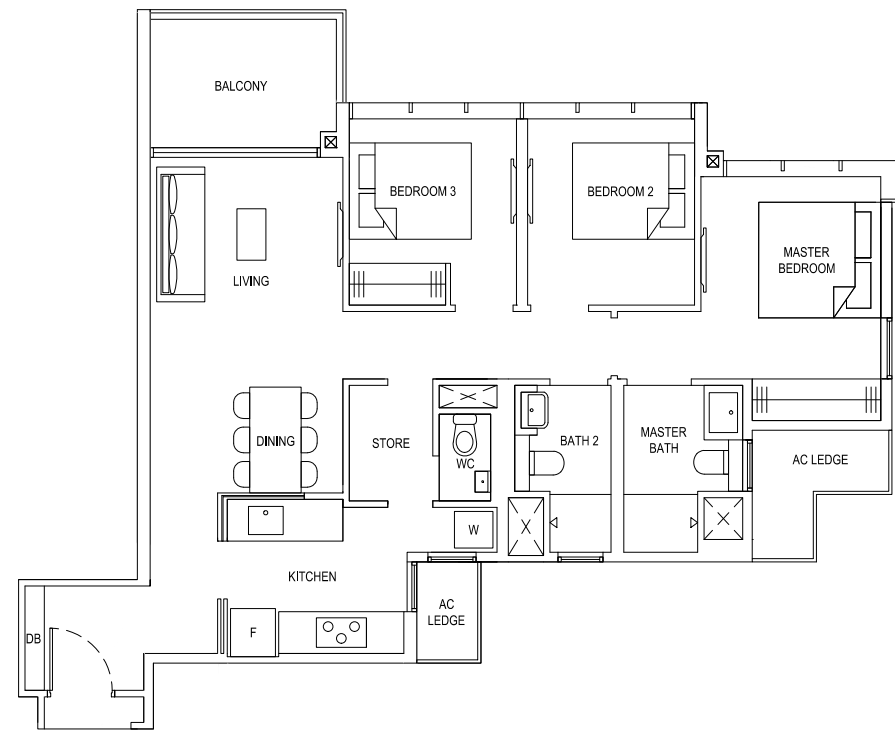
Dotted line denotes void area of 17 sqm / 183 sqft above living and dining for #18-46, #18-56



Plans are subject to change/amendments as may be required and/or approved by the Developer and/or the relevant authorities and do not form part of any offer or contract. These are not drawn to scale and are for the purpose of visual presentation only. \*Units with mirror image.

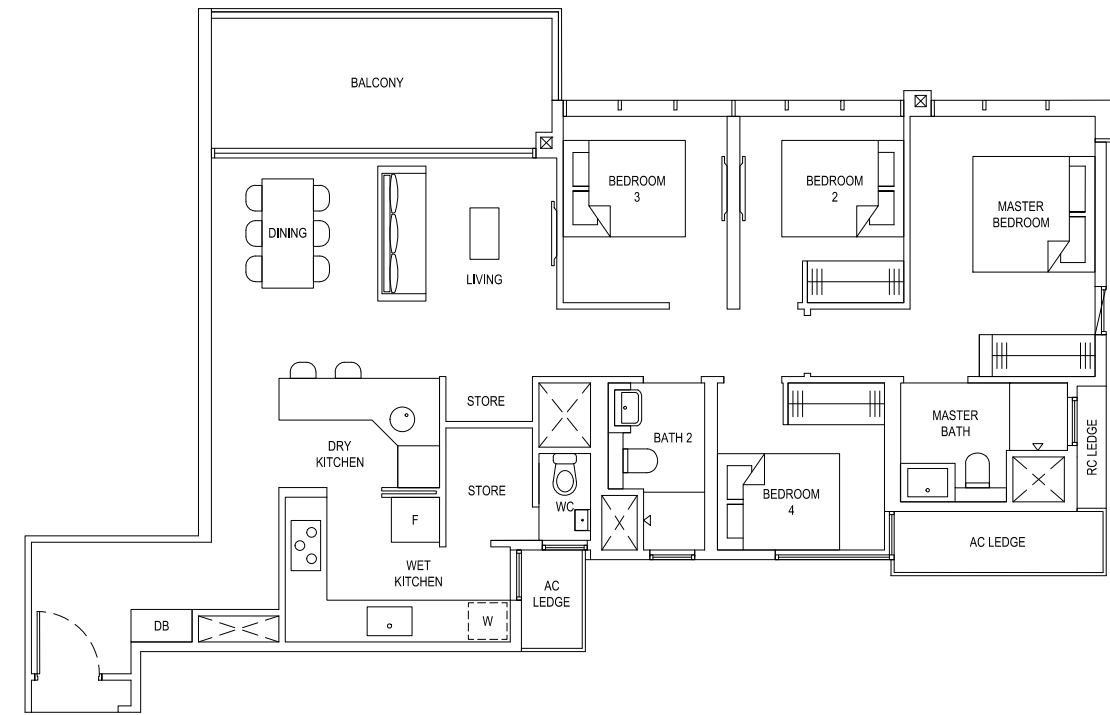


Plans are subject to change/amendments as may be required and/or approved by the Developer and/or the relevant authorities and do not form part of any offer or contract. These are not drawn to scale and are for the purpose of visual presentation only. \*Units with mirror image.

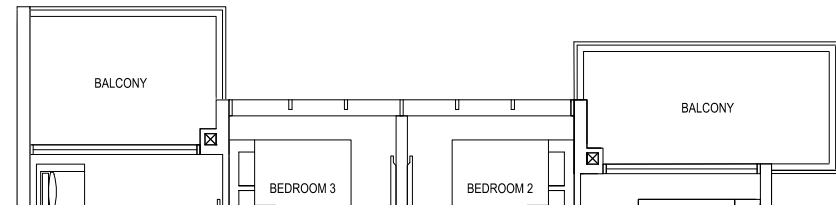


TYPE 3D5a  
94 sqm / 1012 sqft  
#02-38 to #14-38 (BLOCK 89)

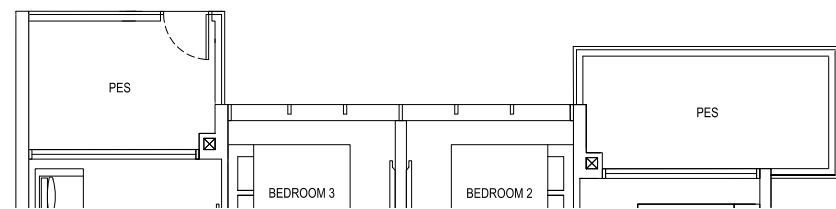
TYPE 4C1a  
119 sqm / 1281 sqft  
#03-11 to #14-11 (BLOCK 83)



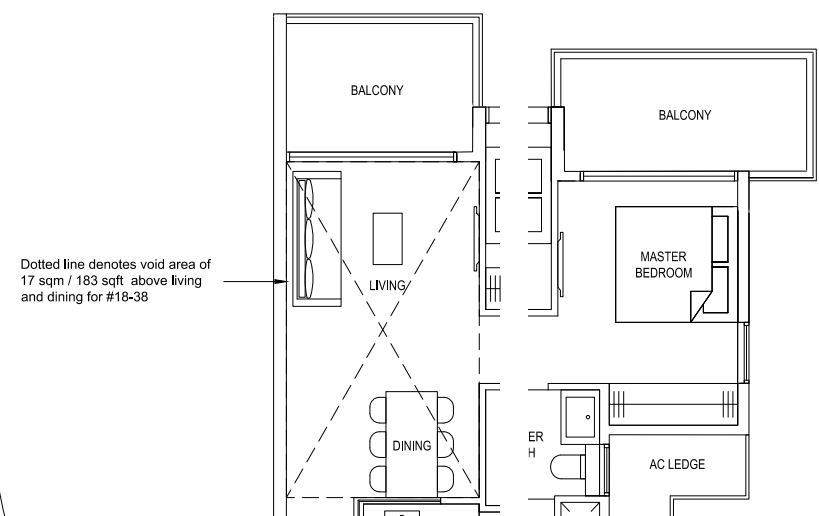
TYPE 3D5a(b)  
101 sqm / 1087 sqft  
#15-38 to #17-38 (BLOCK 89)



TYPE 3D5a(G)  
101 sqm / 1087 sqft  
#01-38 (BLOCK 89)

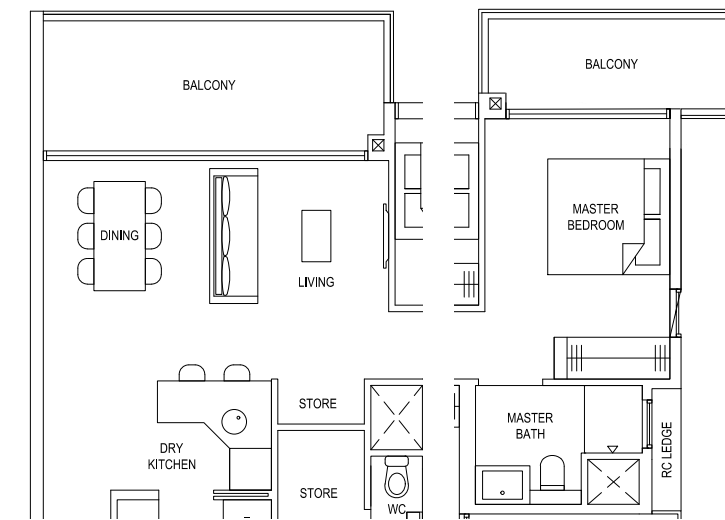


TYPE 3D5a(Ph)  
118 sqm / 1270 sqft  
(incl. void 17 sqm / 183 sqft)  
#18-38 (BLOCK 89)

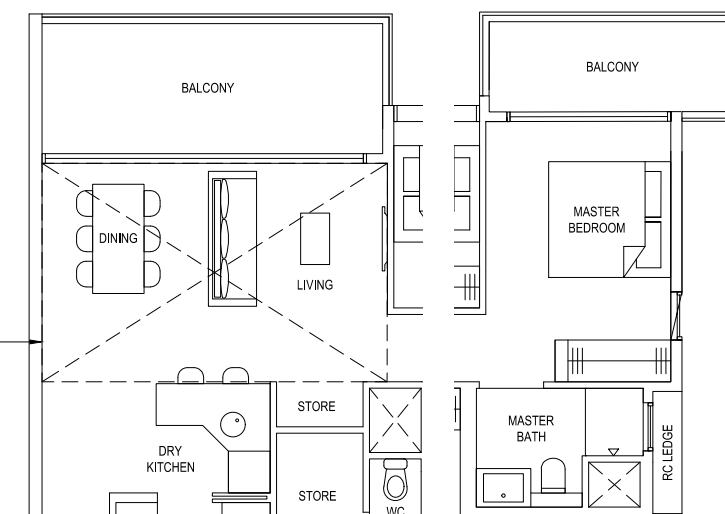


Dotted line denotes void area of 17 sqm / 183 sqft above living and dining for #18-38

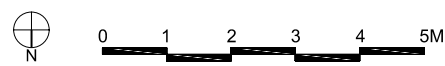
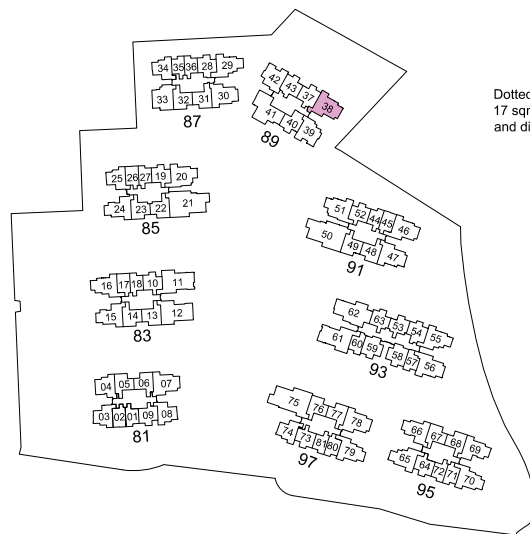
Dotted line denotes void area of 20 sqm / 215 sqft above living and dining for #18-11



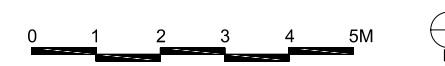
TYPE 4C1a(b)  
125 sqm / 1346 sqft  
#15-11 to #17-11 (BLOCK 83)



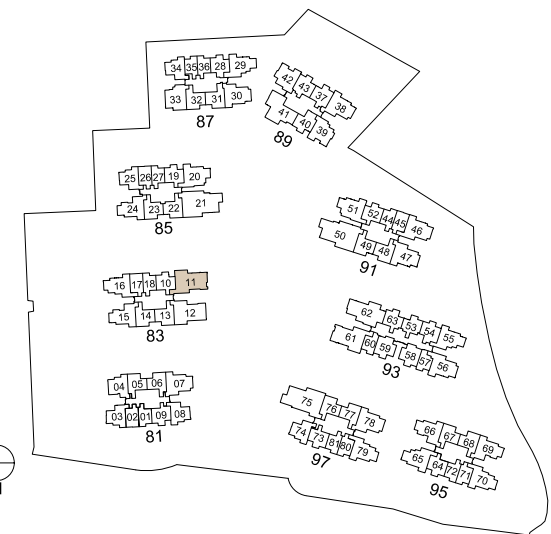
TYPE 4C1a(Ph)  
145 sqm / 1561 sqft  
(incl. void 20 sqm / 215 sqft)  
#18-11 (BLOCK 83)



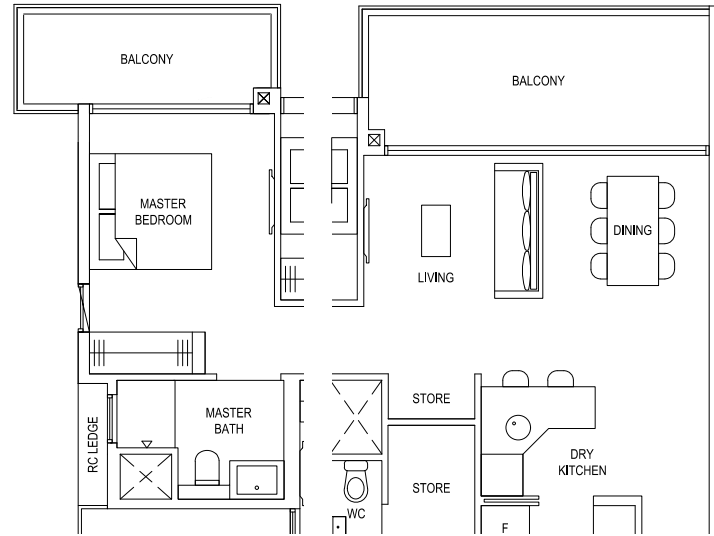
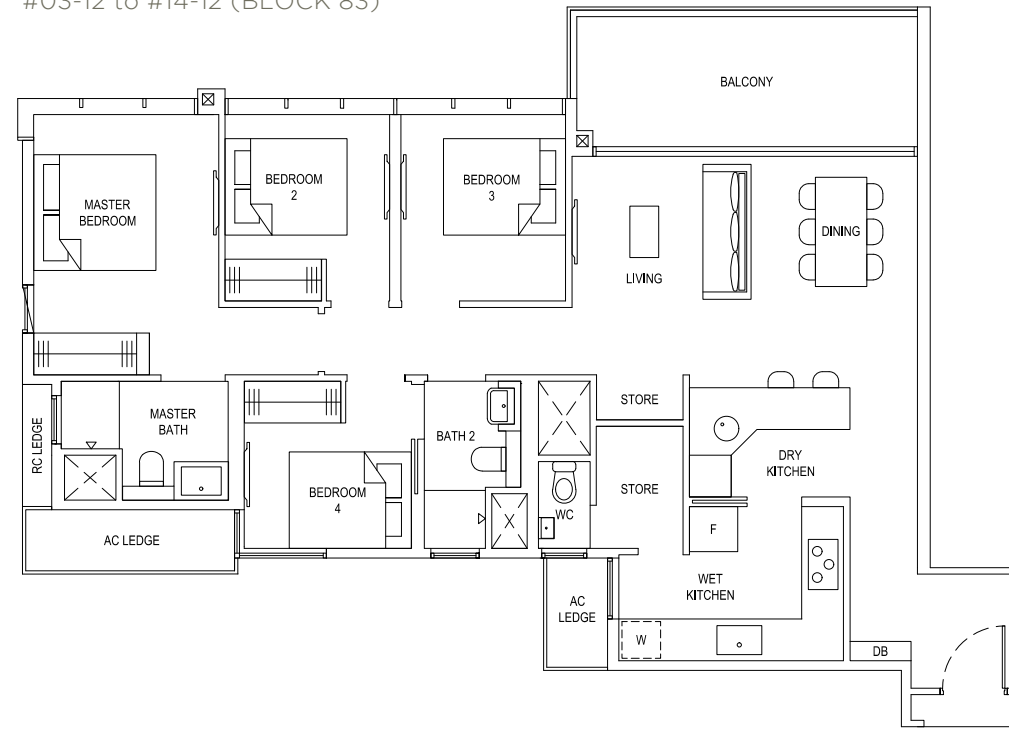
Plans are subject to change/amendments as may be required and/or approved by the Developer and/or the relevant authorities and do not form part of any offer or contract. These are not drawn to scale and are for the purpose of visual presentation only.



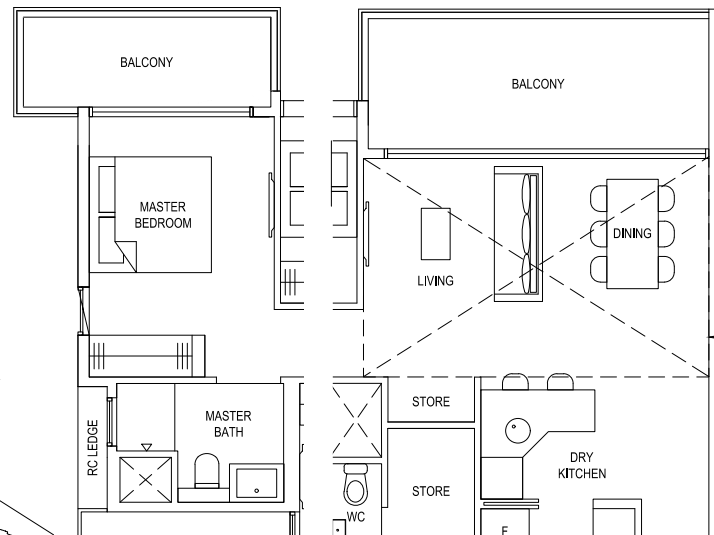
Plans are subject to change/amendments as may be required and/or approved by the Developer and/or the relevant authorities and do not form part of any offer or contract. These are not drawn to scale and are for the purpose of visual presentation only.



TYPE 4C2a  
118 sqm / 1270 sqft  
#03-12 to #14-12 (BLOCK 83)



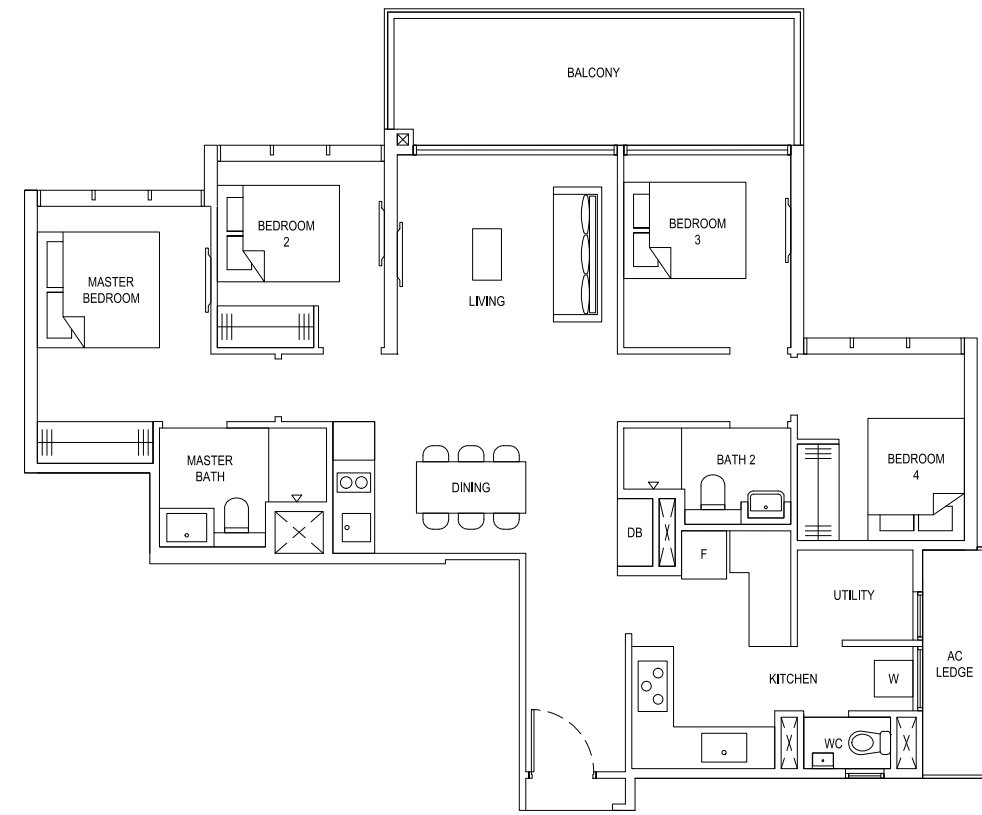
TYPE 4C2a(b)  
125 sqm / 1346 sqft  
#15-12 to #17-12 (BLOCK 83)



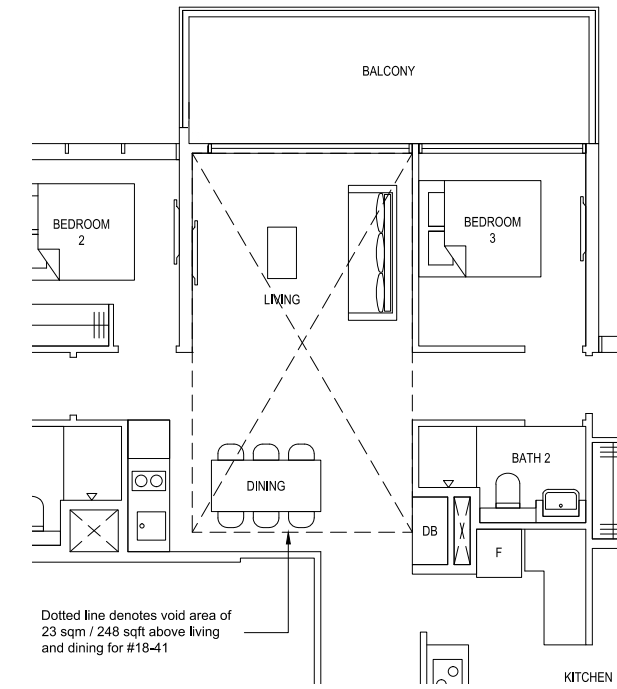
TYPE 4C2a(Ph)  
145 sqm / 1561 sqft  
(incl. void 20 sqm / 215 sqft)  
#18-12 (BLOCK 83)

Dotted line denotes void area of 20 sqm / 215 sqft above living and dining for #18-12

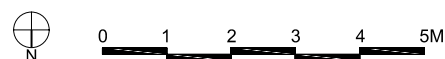
TYPE 4C3  
119 sqm / 1281 sqft  
#03-41 to #17-41 (BLOCK 89)



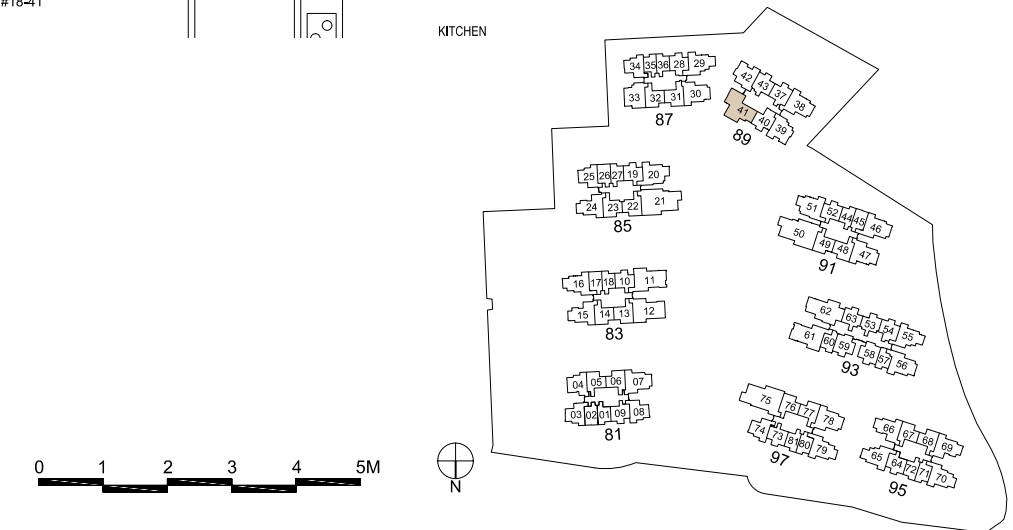
TYPE 4C3(Ph)  
142 sqm / 1528 sqft (incl. void 23 sqm / 248 sqft)  
#18-41 (BLOCK 89)



Dotted line denotes void area of 23 sqm / 248 sqft above living and dining for #18-41

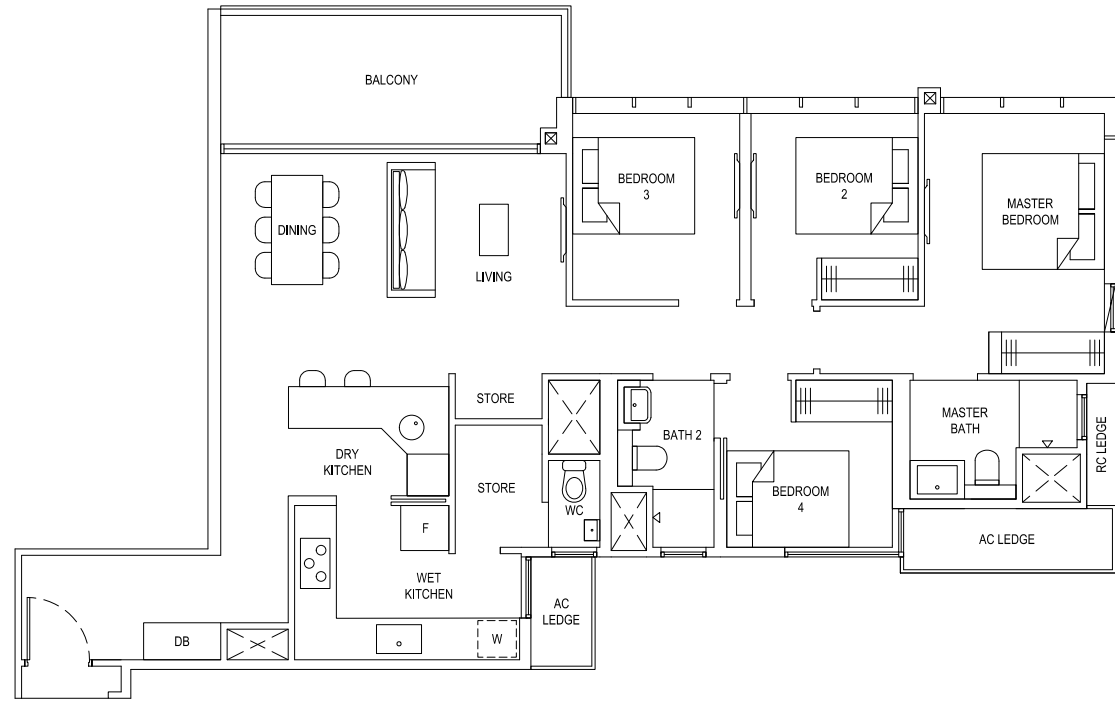


Plans are subject to change/amendments as may be required and/or approved by the Developer and/or the relevant authorities and do not form part of any offer or contract. These are not drawn to scale and are for the purpose of visual presentation only.

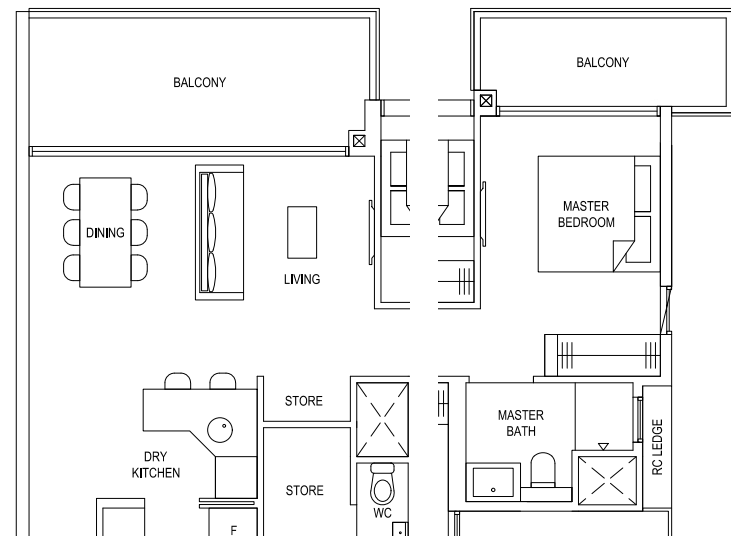


Plans are subject to change/amendments as may be required and/or approved by the Developer and/or the relevant authorities and do not form part of any offer or contract. These are not drawn to scale and are for the purpose of visual presentation only.

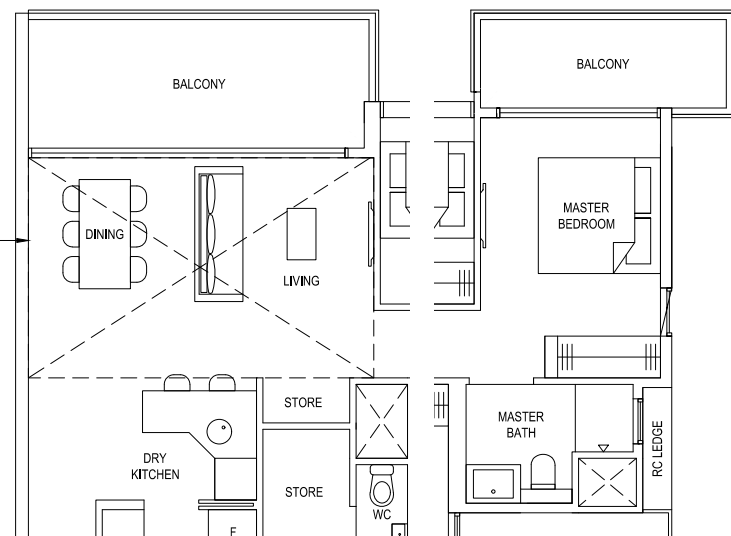
TYPE 4C4a  
120 sqm / 1292 sqft  
#03-61 to #14-61 (BLOCK 93)



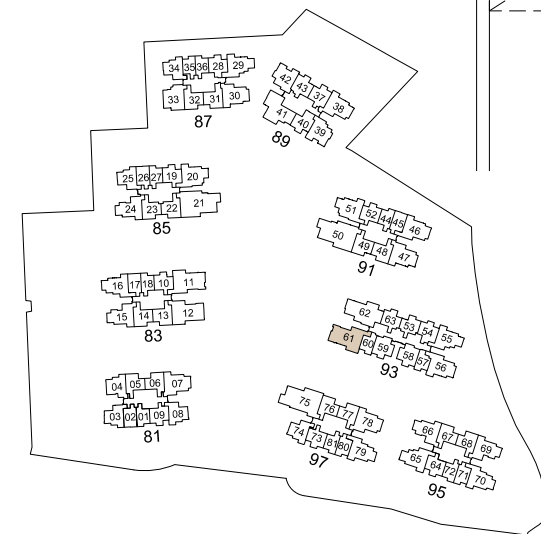
TYPE 4C4a(b)  
126 sqm / 1356 sqft  
#15-61 to #17-61 (BLOCK 93)



TYPE 4C4a(Ph)  
147 sqm / 1582 sqft  
(incl. void 20 sqm / 215 sqft)  
#18-61 (BLOCK 93)

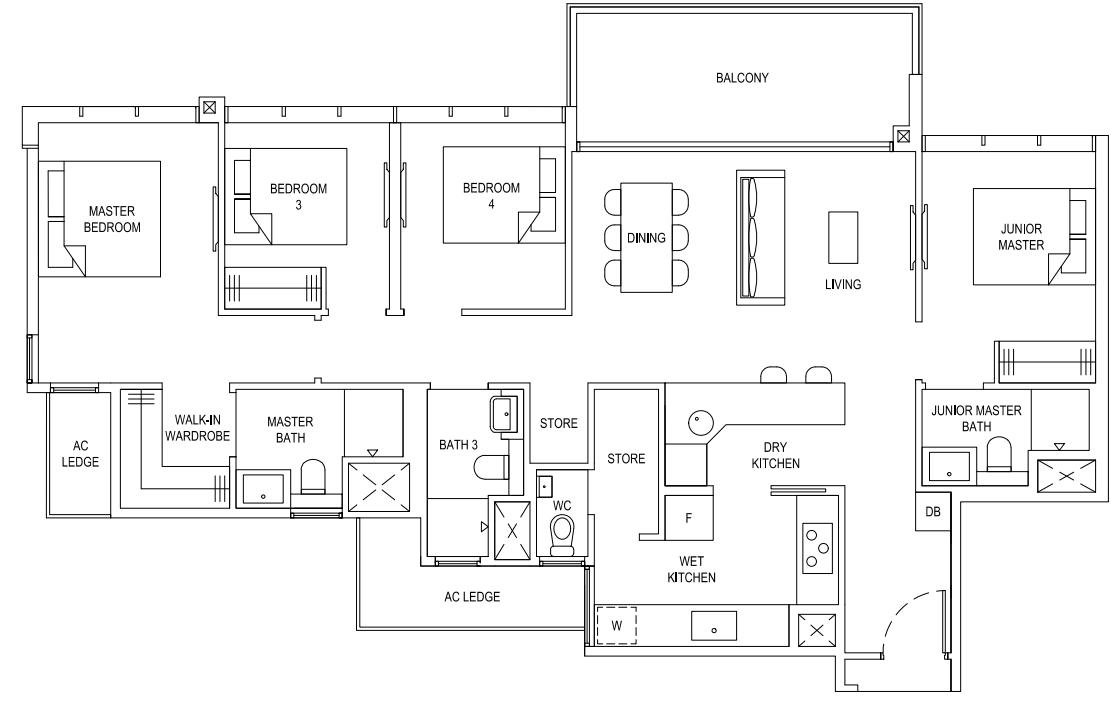


Dotted line denotes void area of 20 sqm / 215 sqft above living and dining for #18-61

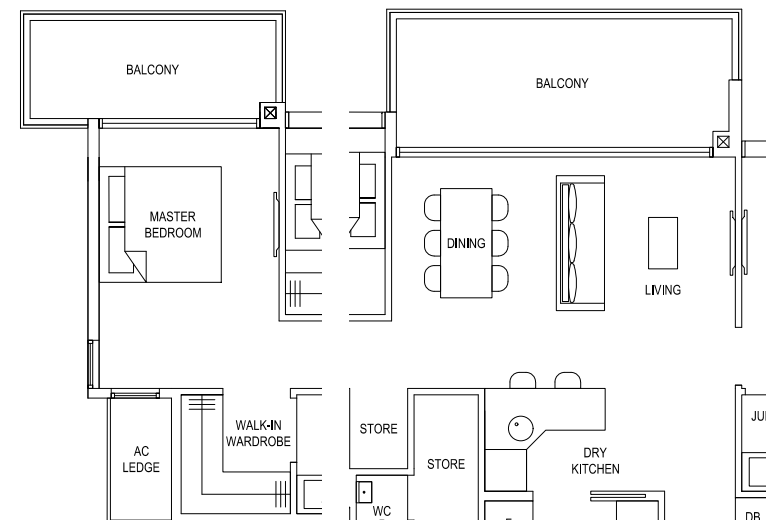


Plans are subject to change/amendments as may be required and/or approved by the Developer and/or the relevant authorities and do not form part of any offer or contract. These are not drawn to scale and are for the purpose of visual presentation only.

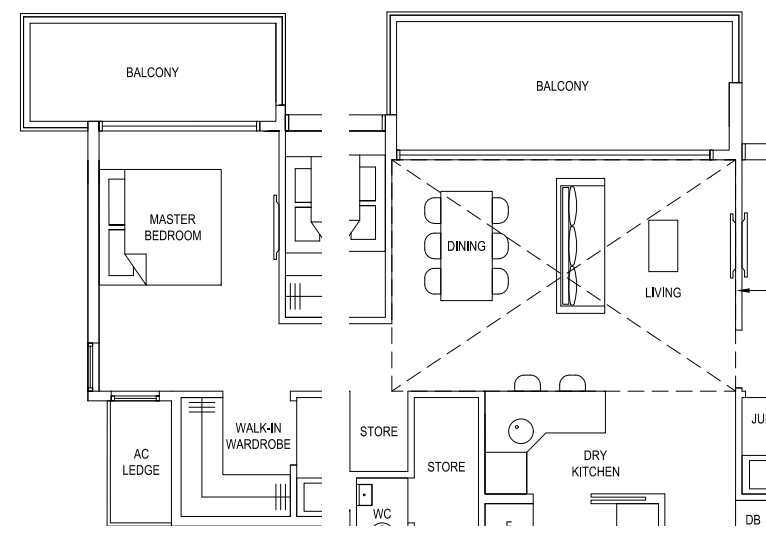
TYPE 4D1a  
129 sqm / 1389 sqft  
#03-62 to #14-62 (BLOCK 93)



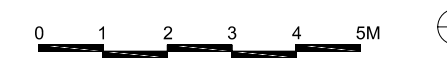
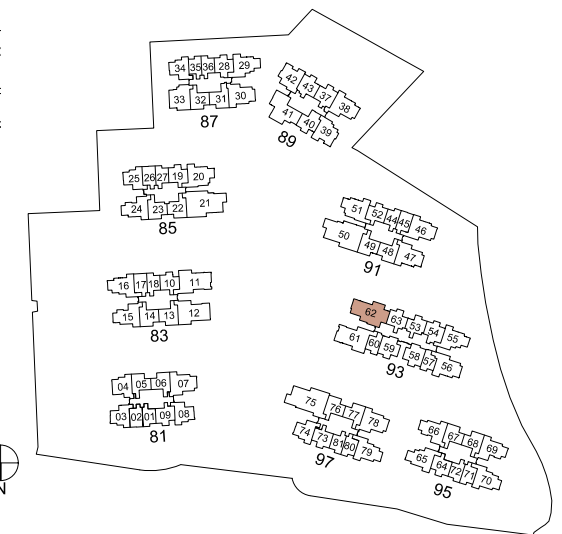
TYPE 4D1a(b)  
136 sqm / 1464 sqft  
#15-62 to #17-62 (BLOCK 93)



TYPE 4D1a(Ph)  
158 sqm / 1701 sqft  
(incl. void 22 sqm / 237 sqft)  
#18-62 (BLOCK 93)

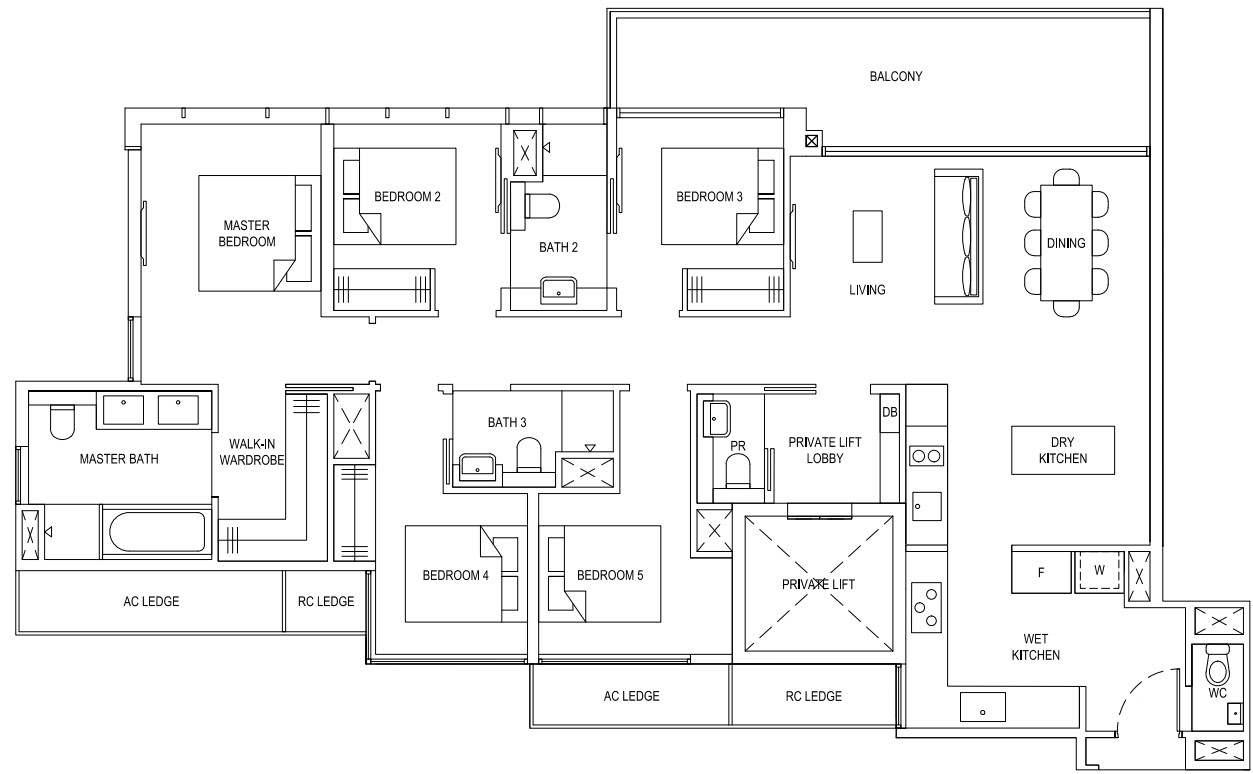


Dotted line denotes void area of 22 sqm / 237 sqft above living and dining for #18-62

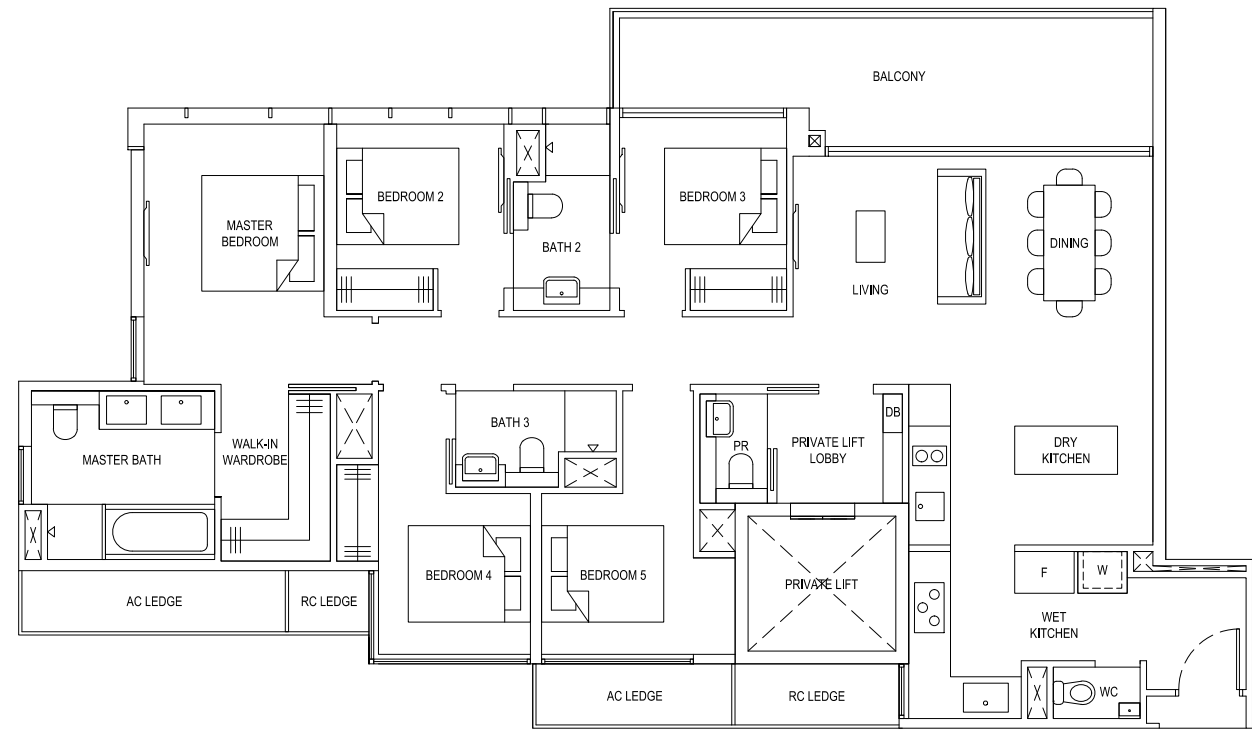


Plans are subject to change/amendments as may be required and/or approved by the Developer and/or the relevant authorities and do not form part of any offer or contract. These are not drawn to scale and are for the purpose of visual presentation only.

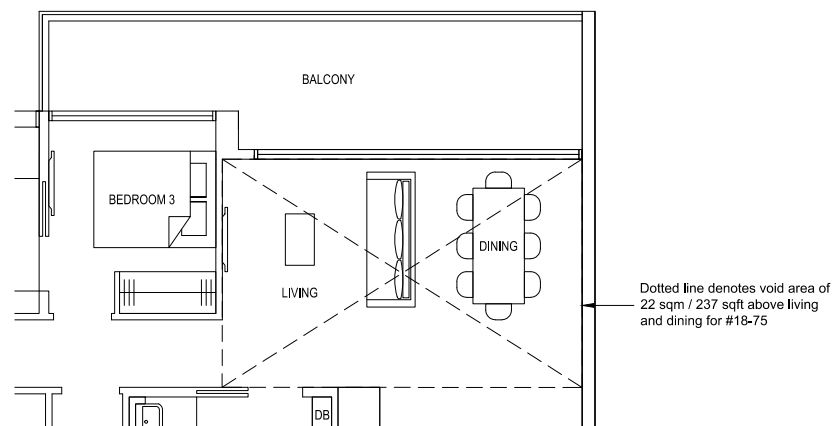
TYPE 5B1  
155 sqm / 1668 sqft  
#03-75 to #17-75 (BLOCK 97)



TYPE 5B2  
156 sqm / 1679 sqft  
#03-21 to #17-21 (BLOCK 85)  
#03-50 to #17-50\* (BLOCK 91)

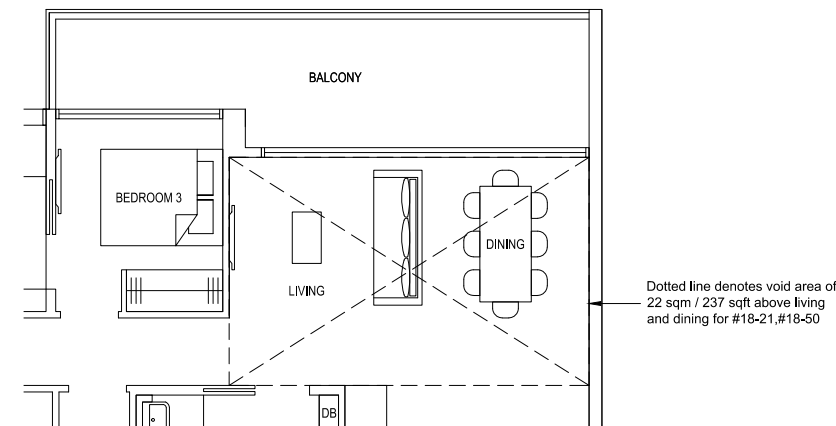


TYPE 5B1(PH)  
177 sqm / 1905 sqft (incl. void 22 sqm / 237 sqft)  
#18-75 (BLOCK 97)

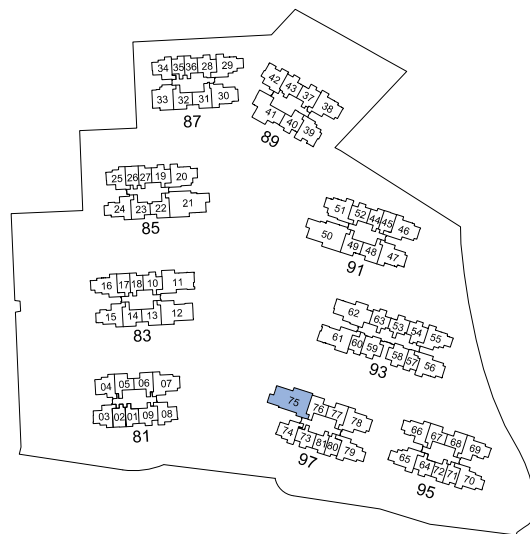


Dotted line denotes void area of 22 sqm / 237 sqft above living and dining for #18-75

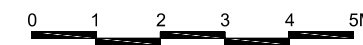
TYPE 5B2(PH)  
178 sqm / 1916 sqft (incl. void 22 sqm / 237 sqft)  
#18-21 (BLOCK 85)  
#18-50\* (BLOCK 91)



Dotted line denotes void area of 22 sqm / 237 sqft above living and dining for #18-21, #18-50



Plans are subject to change/amendments as may be required and/or approved by the Developer and/or the relevant authorities and do not form part of any offer or contract. These are not drawn to scale and are for the purpose of visual presentation only.



Plans are subject to change/amendments as may be required and/or approved by the Developer and/or the relevant authorities and do not form part of any offer or contract. These are not drawn to scale and are for the purpose of visual presentation only. \*Units with mirror image.

