

# Unit Distribution Chart

# 1-Bedroom

## 22 LENTOR CENTRAL

STACK FLOOR	01	02	03	04	05	06	07	08
23	D1C(L)	D2P(L)	B6S(L)	B5S(L)	D3P(L)	C7S(L)	B1C(L)	B4(L)
22	D1C	D2P	B6S	B5S	D3P	C7S	B1C	B4
21	D1C	D2P	B6S	B5S	D3P	C7S	B1C	B4
20	D1C	D2P	B6S	B5S	D3P	C7S	B1C	B4
19	D1C	D2P	B6S	B5S	D3P	C7S	B1C	B4
18	D1C	D2P	B6S	B5S	D3P	C7S	B1C	B4
17	D1C	D2P	B6S	B5S	D3P	C7S	B1C	B4
16	D1C	D2P	B6S	B5S	D3P	C7S	B1C	B4
15	D1C	D2P	B6S	B5S	D3P	C7S	B1C	B4
14	SKY TERRACE							
13	D1C(L)	D2P(L)	B6S(L)	B5S(L)	D3P(L)	C7S(L)	B1C(L)	B4(L)
12	D1C	D2P	B6S	B5S	D3P	C7S	B1C	B4
11	D1C	D2P	B6S	B5S	D3P	C7S	B1C	B4
10	D1C	D2P	B6S	B5S	D3P	C7S	B1C	B4
9	D1C	D2P	B6S	B5S	D3P	C7S	B1C	B4
8	D1C	D2P	B6S	B5S	D3P	C7S	B1C	B4
7	D1C	D2P	B6S	B5S	D3P	C7S	B1C	B4
6	D1C	D2P	B6S	B5S	D3P	C7S	B1C	B4
5	D1C	D2P	B6S	B5S	D3P	C7S	B1C	B4
4	D1C	D2P	B6S	B5S	D3P	C7S	B1C	B4
3	D1C	D2P	B6S	B5S	D3P	C7S	B1C	B4
2	D1C					C7S	B1C	B4
1	D1C(G)					C7S(G)	B1C(G)	B4(G)
B1	CARPARK							
B2	CARPARK							

### LEGEND:

- 1-BEDROOM
- 2-BEDROOM CLASSIC
- 2-BEDROOM
- 2-BEDROOM + STUDY
- 3-BEDROOM
- 3-BEDROOM + STUDY
- 3-BEDROOM PREMIUM
- 4-BEDROOM CLASSIC
- 4-BEDROOM PREMIUM

\*MIRROR UNITS

## 26 LENTOR CENTRAL

STACK FLOOR	09	10	11	12	13	14	15	16	17	18*	19	20	21*	22*
23	C1(L)	D4P(L)	A1(L)	C8P(L)	C4S(L)	B3(L)	C3(L)	C6S(L)	B2C(L)	B6S(L)	C5S(L)	C2(L)	B4(L)	B1C(L)
22	C1	D4P	A1	C8P	C4S	B3	C3	C6S	B2C	B6S	C5S	C2	B4	B1C
21	C1	D4P	A1	C8P	C4S	B3	C3	C6S	B2C	B6S	C5S	C2	B4	B1C
20	C1	D4P	A1	C8P	C4S	B3	C3	C6S	B2C	B6S	C5S	C2	B4	B1C
19	C1	D4P	A1	C8P	C4S	B3	C3	C6S	B2C	B6S	C5S	C2	B4	B1C
18	C1	D4P	A1	C8P	C4S	B3	C3	C6S	B2C	B6S	C5S	C2	B4	B1C
17	C1	D4P	A1	C8P	C4S	B3	C3	C6S	B2C	B6S	C5S	C2	B4	B1C
16	C1	D4P	A1	C8P	C4S	B3	C3	C6S	B2C	B6S	C5S	C2	B4	B1C
15	C1	D4P	A1	C8P	C4S	B3	C3	C6S	B2C	B6S	C5S	C2	B4	B1C
14	SKY TERRACE													
13	C1(L)	D4P(L)	A1(L)	C8P(L)	C4S(L)	B3(L)	C3(L)	C6S(L)	B2C(L)	B6S(L)	C5S(L)	C2(L)	B4(L)	B1C(L)
12	C1	D4P	A1	C8P	C4S	B3	C3	C6S	B2C	B6S	C5S	C2	B4	B1C
11	C1	D4P	A1	C8P	C4S	B3	C3	C6S	B2C	B6S	C5S	C2	B4	B1C
10	C1	D4P	A1	C8P	C4S	B3	C3	C6S	B2C	B6S	C5S	C2	B4	B1C
9	C1	D4P	A1	C8P	C4S	B3	C3	C6S	B2C	B6S	C5S	C2	B4	B1C
8	C1	D4P	A1	C8P	C4S	B3	C3	C6S	B2C	B6S	C5S	C2	B4	B1C
7	C1	D4P	A1	C8P	C4S	B3	C3	C6S	B2C	B6S	C5S	C2	B4	B1C
6	C1	D4P	A1	C8P	C4S	B3	C3	C6S	B2C	B6S	C5S	C2	B4	B1C
5	C1	D4P	A1	C8P	C4S	B3	C3	C6S	B2C	B6S	C5S	C2	B4	B1C
4	C1	D4P	A1	C8P	C4S	B3	C3	C6S	B2C	B6S	C5S	C2	B4	B1C
3	C1	D4P	A1	C8P	C4S	B3	C3	C6S	B2C	B6S	C5S	C2	B4	B1C
2	C1	D4P	A1	C8P	C4S	B3	C3	C6S	B2C	B6S	C5S	C2	B4	B1C
1	C1(G)	D4P(G)	A1(G)		C4S(G)	B3(G)	C3(G)	C6S(G)	B2C(G)		C5S(G)	C2(G)	B4(G)	B1C(G)
B1	CARPARK													
B2	CARPARK													

## 28 LENTOR CENTRAL

### TYPE A1 48 sqm / 517 sqft

**BLK 26**  
#02-11 to #12-11  
#15-11 to #22-11

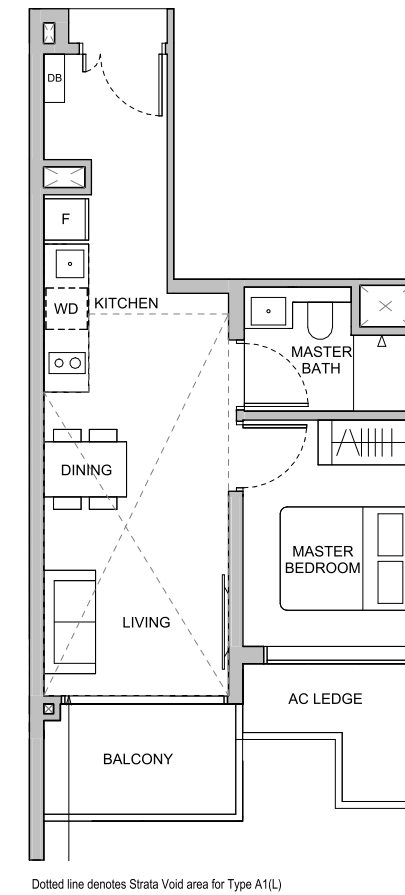
### TYPE A1(L) 64 sqm / 689 sqft

Area is inclusive of Strata Void above living and dining as per dotted line

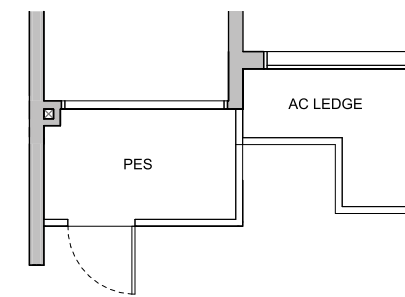
**BLK 26**  
#13-11  
#23-11

### TYPE A1(G) 48 sqm / 517 sqft

**BLK 26**  
#01-11



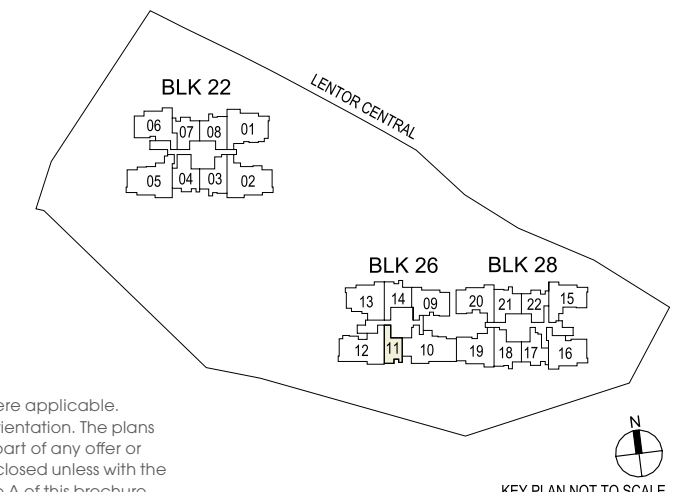
Dotted line denotes Strata Void area for Type A1(L)



Building Plan Reference No: A1986-00001-2022-BP01  
Building Plan Approval Date: 29 September 2023

- DB DISTRIBUTION BOARD
- F FRIDGE
- WD WASHER CUM DRYER
- WC WATER CLOSET
- W&D WASHER AND DRYER

Area includes air-conditioner (AC) ledge, balcony, private enclosed space (PES) and strata void where applicable. Some units are mirror images of the floor plans shown in the brochure. Please refer to the key plan for orientation. The plans are subject to change as may be required or approved by the relevant authorities and do not form part of any offer or contract. Areas are estimates only and are subject to final survey. The balcony and PES shall not be enclosed unless with the approved balcony screen. For an illustration of the approved balcony screen, please refer to Annexure A of this brochure.



KEY PLAN NOT TO SCALE

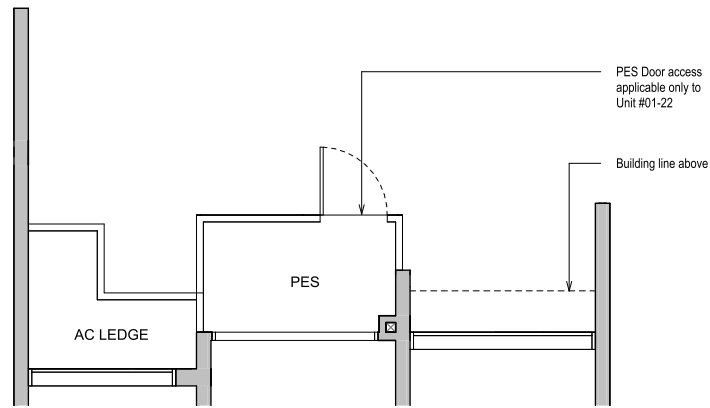
# 2-Bedroom Classic

# 2-Bedroom Classic

## TYPE B1C(G) 58 sqm / 624 sqft

**BLK 22**  
#01-07

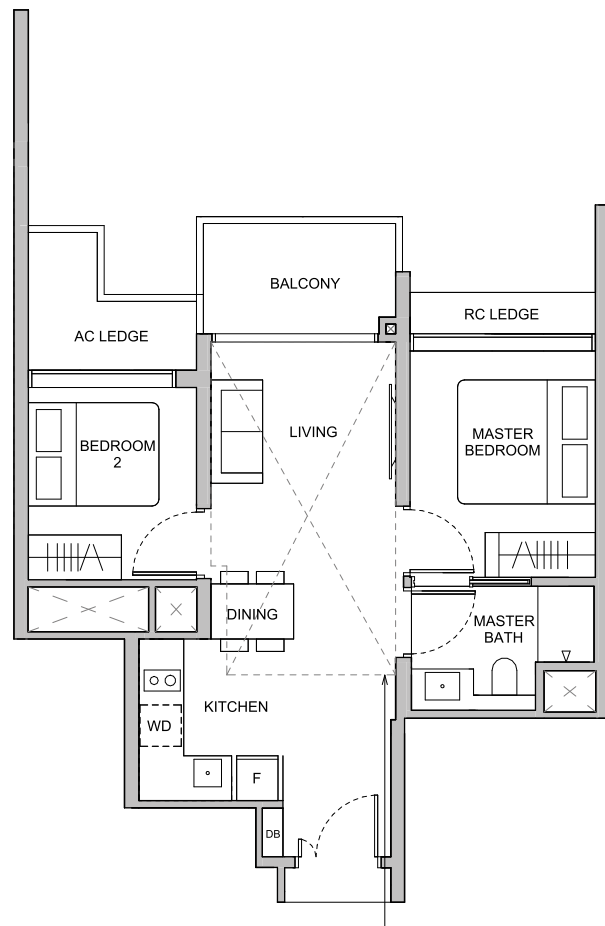
**BLK 28**  
#01-22\*



## TYPE B1C 58 sqm / 624 sqft

**BLK 22**  
#02-07 to #12-07  
#15-07 to #22-07

**BLK 28**  
#02-22\* to #12-22\*  
#15-22\* to #22-22\*



Dotted line denotes Strata Void area for Type B1C(L)

## TYPE B1C(L) 72 sqm / 775 sqft

Area is inclusive of Strata Void above living and dining as per dotted line

**BLK 22**  
#13-07  
#23-07

**BLK 28**  
#13-22\*  
#23-22\*

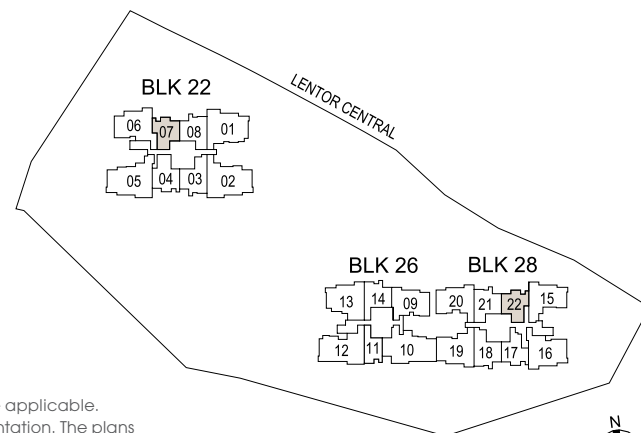
0 1 3 5m

Building Plan Reference No: A1986-00001-2022-BP01  
Building Plan Approval Date: 29 September 2023  
\*MIRROR UNITS

DB DISTRIBUTION BOARD    WD WASHER CUM DRYER    W&D WASHER AND DRYER  
F FRIDGE    WC WATER CLOSET

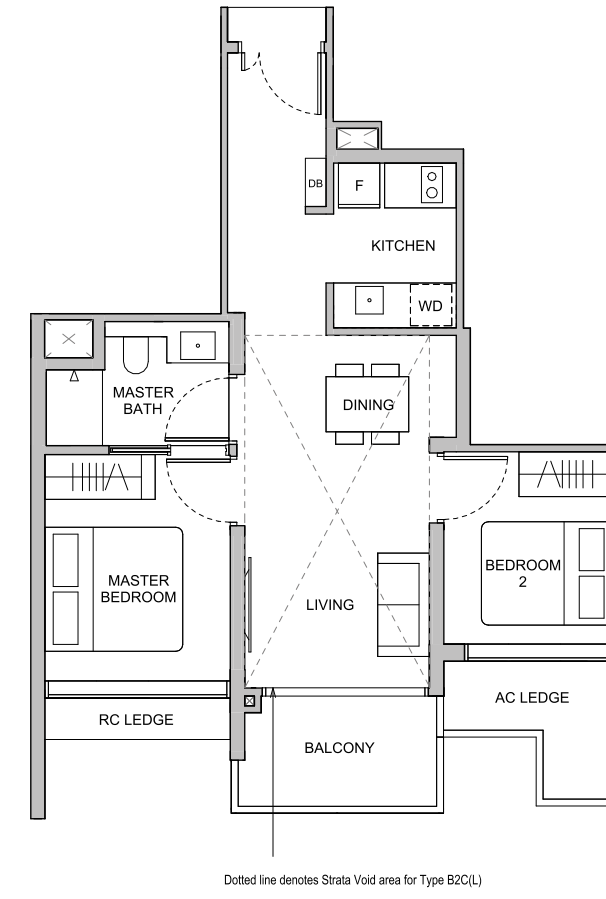
Area includes air-conditioner (AC) ledge, balcony, private enclosed space (PES) and strata void where applicable. Some units are mirror images of the floor plans shown in the brochure. Please refer to the key plan for orientation. The plans are subject to change as may be required or approved by the relevant authorities and do not form part of any offer or contract. Areas are estimates only and are subject to final survey. The balcony and PES shall not be enclosed unless with the approved balcony screen. For an illustration of the approved balcony screen, please refer to Annexure A of this brochure.

KEY PLAN NOT TO SCALE



## TYPE B2C 61 sqm / 657 sqft

**BLK 28**  
#02-17 to #12-17  
#15-17 to #22-17



Dotted line denotes Strata Void area for Type B2C(L)

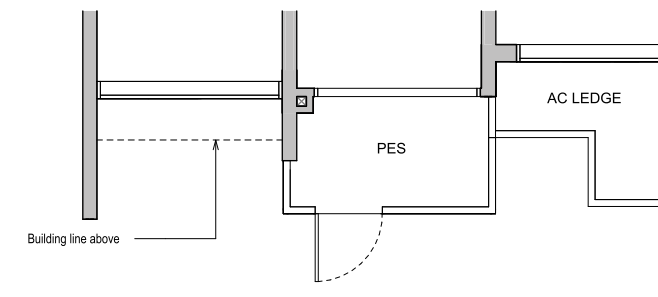
## TYPE B2C(L) 76 sqm / 818 sqft

Area is inclusive of Strata Void above living and dining as per dotted line

**BLK 28**  
#13-17  
#23-17

## TYPE B2C(G) 61 sqm / 657 sqft

**BLK 28**  
#01-17



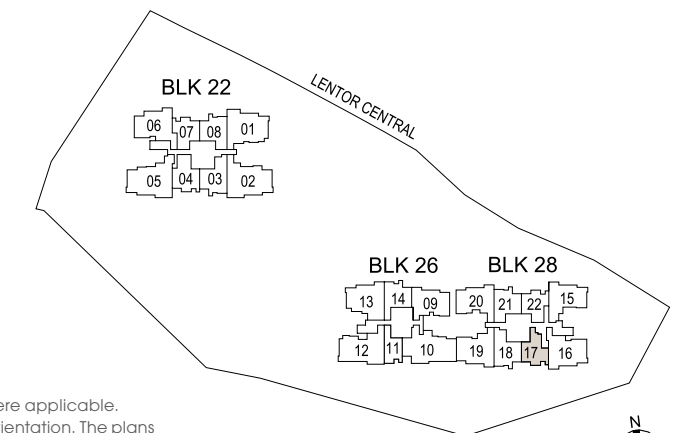
0 1 3 5m

Building Plan Reference No: A1986-00001-2022-BP01  
Building Plan Approval Date: 29 September 2023

DB DISTRIBUTION BOARD    WD WASHER CUM DRYER    W&D WASHER AND DRYER  
F FRIDGE    WC WATER CLOSET

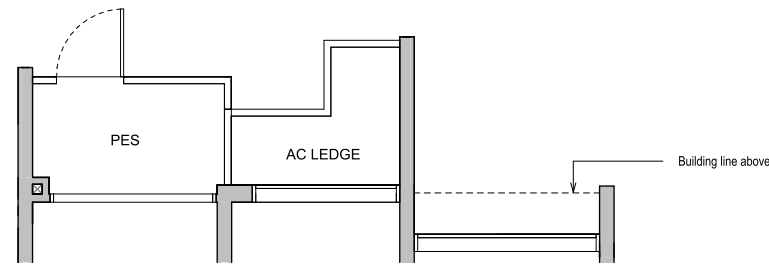
Area includes air-conditioner (AC) ledge, balcony, private enclosed space (PES) and strata void where applicable. Some units are mirror images of the floor plans shown in the brochure. Please refer to the key plan for orientation. The plans are subject to change as may be required or approved by the relevant authorities and do not form part of any offer or contract. Areas are estimates only and are subject to final survey. The balcony and PES shall not be enclosed unless with the approved balcony screen. For an illustration of the approved balcony screen, please refer to Annexure A of this brochure.

KEY PLAN NOT TO SCALE



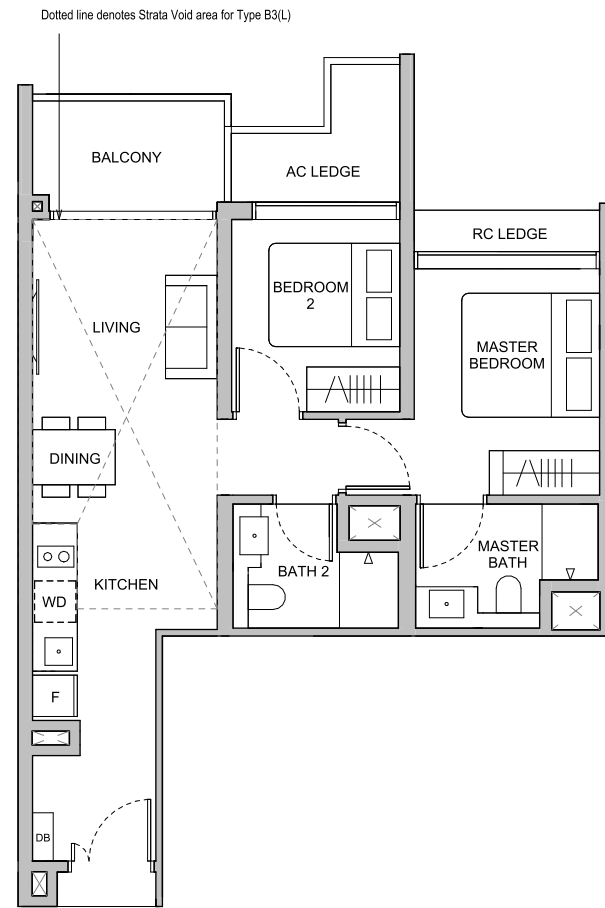
**TYPE B3(G)**  
66 sqm / 710 sqft

**BLK 26**  
#01-14



**TYPE B3**  
66 sqm / 710 sqft

**BLK 26**  
#02-14 to #12-14  
#15-14 to #22-14



**TYPE B3(L)**  
82 sqm / 883 sqft

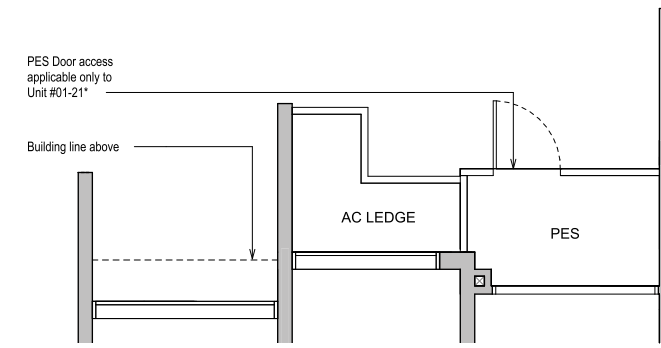
Area is inclusive of Strata Void above living and dining as per dotted line

**BLK 26**  
#13-14  
#23-14

**TYPE B4(G)**  
66 sqm / 710 sqft

**BLK 22**  
#01-08

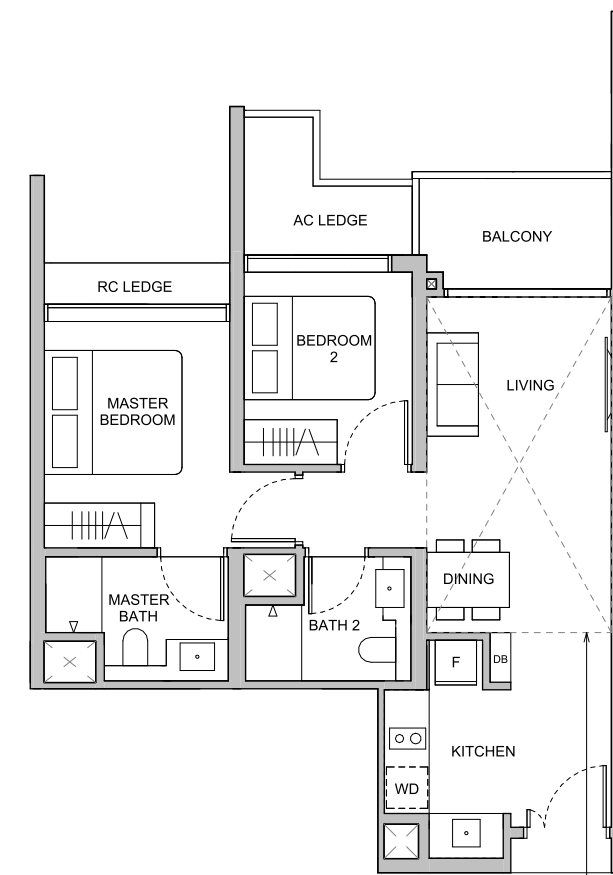
**BLK 28**  
#01-21\*



**TYPE B4**  
66 sqm / 710 sqft

**BLK 22**  
#02-08 to #12-08  
#15-08 to #22-08

**BLK 28**  
#02-21\* to #12-21\*  
#15-21\* to #22-21\*



**TYPE B4(L)**  
81 sqm / 872 sqft

Area is inclusive of Strata Void above living and dining as per dotted line

**BLK 22**  
#13-08  
#23-08

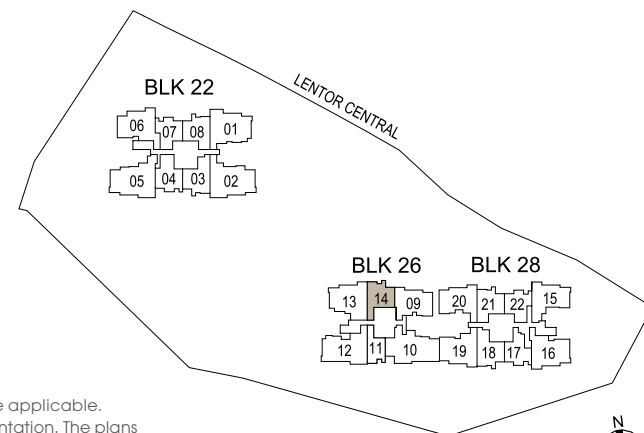
**BLK 28**  
#13-21\*  
#23-21\*



Building Plan Reference No: A1986-00001-2022-BP01  
Building Plan Approval Date: 29 September 2023

DB DISTRIBUTION BOARD    WD WASHER CUM DRYER    W&D WASHER AND DRYER  
F FRIDGE    WC WATER CLOSET

Area includes air-conditioner (AC) ledge, balcony, private enclosed space (PES) and strata void where applicable. Some units are mirror images of the floor plans shown in the brochure. Please refer to the key plan for orientation. The plans are subject to change as may be required or approved by the relevant authorities and do not form part of any offer or contract. Areas are estimates only and are subject to final survey. The balcony and PES shall not be enclosed unless with the approved balcony screen. For an illustration of the approved balcony screen, please refer to Annexure A of this brochure.



KEY PLAN NOT TO SCALE

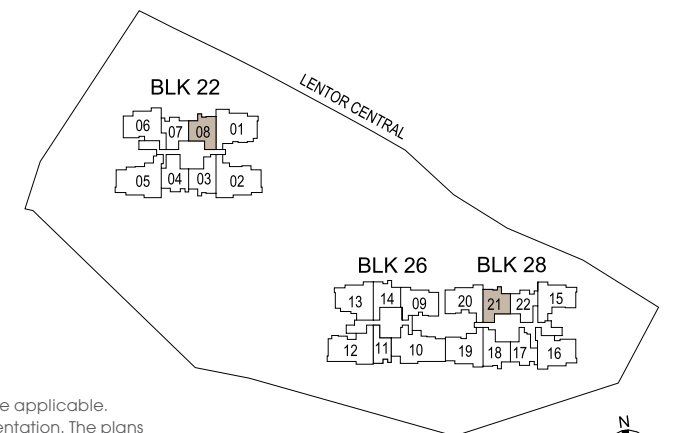


Building Plan Reference No: A1986-00001-2022-BP01  
Building Plan Approval Date: 29 September 2023

\*MIRROR UNITS

DB DISTRIBUTION BOARD    WD WASHER CUM DRYER    W&D WASHER AND DRYER  
F FRIDGE    WC WATER CLOSET

Area includes air-conditioner (AC) ledge, balcony, private enclosed space (PES) and strata void where applicable. Some units are mirror images of the floor plans shown in the brochure. Please refer to the key plan for orientation. The plans are subject to change as may be required or approved by the relevant authorities and do not form part of any offer or contract. Areas are estimates only and are subject to final survey. The balcony and PES shall not be enclosed unless with the approved balcony screen. For an illustration of the approved balcony screen, please refer to Annexure A of this brochure.



KEY PLAN NOT TO SCALE

# 2-Bedroom + Study

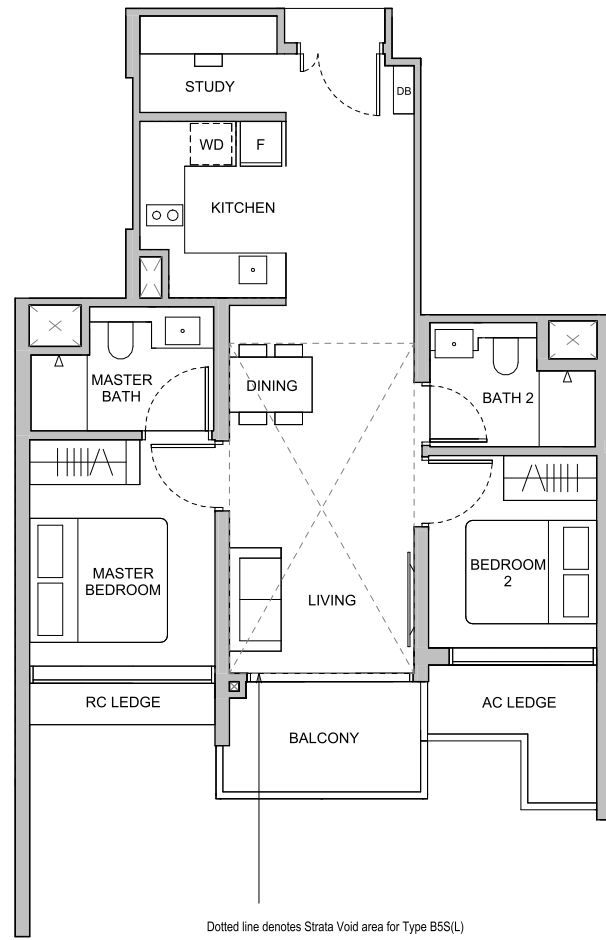
## TYPE B5S 70 sqm / 753 sqft

**BLK 22**  
#03-04 to #12-04  
#15-04 to #22-04

## TYPE B5S(L) 84 sqm / 904 sqft

Area is inclusive of Strata Void above living and dining as per dotted line

**BLK 22**  
#13-04  
#23-04



# 2-Bedroom + Study

## TYPE B6S 73 sqm / 786 sqft

**BLK 22**  
#03-03 to #12-03  
#15-03 to #22-03

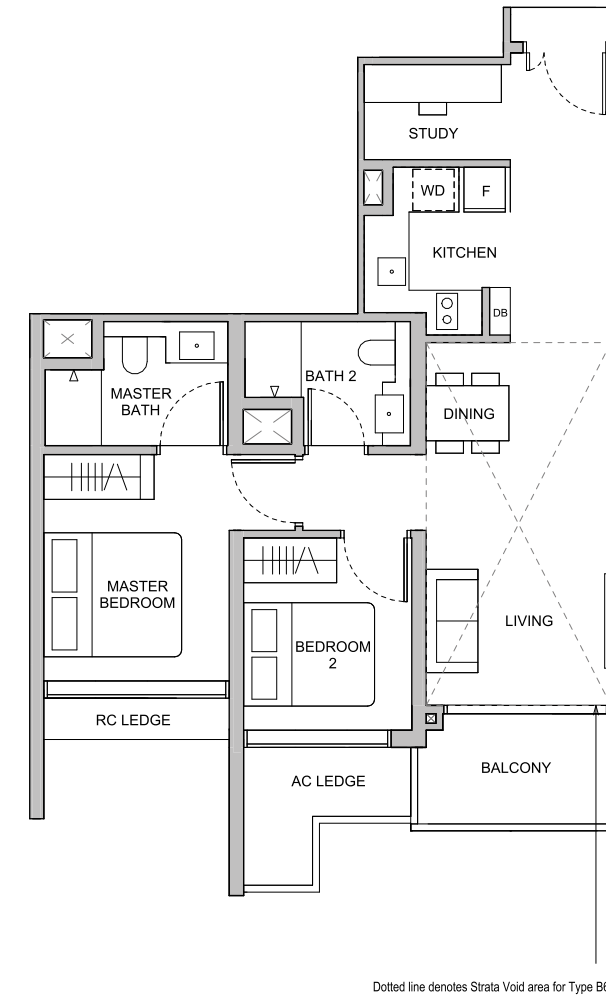
**BLK 28**  
#02-18\* to #12-18\*  
#15-18\* to #22-18\*

## TYPE B6S(L) 89 sqm / 958 sqft

Area is inclusive of Strata Void above living and dining as per dotted line

**BLK 22**  
#13-03  
#23-03

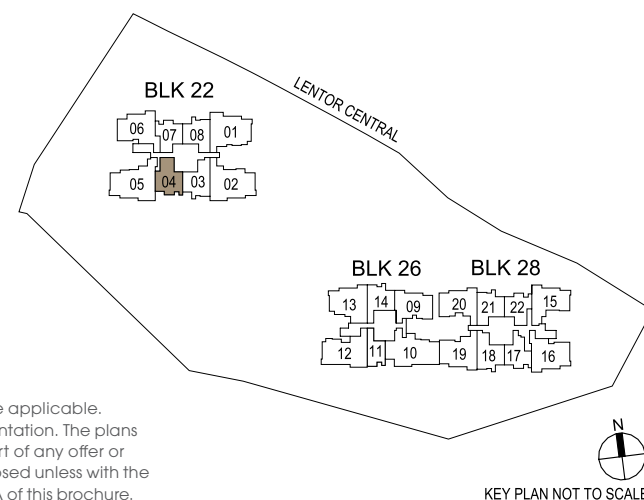
**BLK 28**  
#13-18\*  
#23-18\*



Building Plan Reference No: A1986-00001-2022-BP01  
Building Plan Approval Date: 29 September 2023

DB DISTRIBUTION BOARD    WD WASHER CUM DRYER    W&D WASHER AND DRYER  
F FRIDGE    WC WATER CLOSET

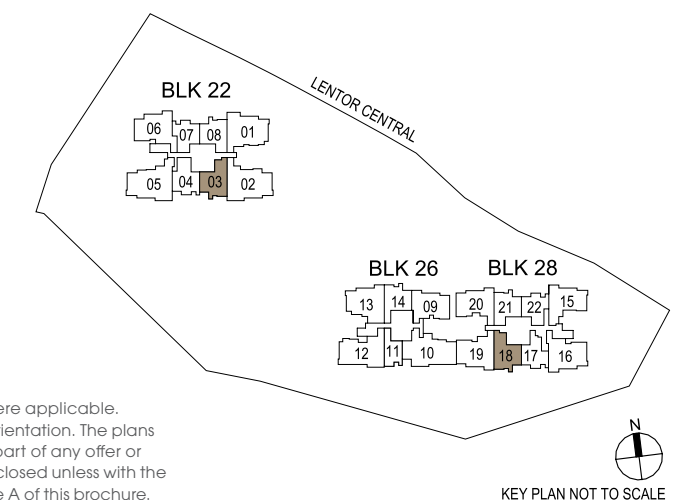
Area includes air-conditioner (AC) ledge, balcony, private enclosed space (PES) and strata void where applicable. Some units are mirror images of the floor plans shown in the brochure. Please refer to the key plan for orientation. The plans are subject to change as may be required or approved by the relevant authorities and do not form part of any offer or contract. Areas are estimates only and are subject to final survey. The balcony and PES shall not be enclosed unless with the approved balcony screen. For an illustration of the approved balcony screen, please refer to Annexure A of this brochure.



Building Plan Reference No: A1986-00001-2022-BP01  
Building Plan Approval Date: 29 September 2023  
\*MIRROR UNITS

DB DISTRIBUTION BOARD    WD WASHER CUM DRYER    W&D WASHER AND DRYER  
F FRIDGE    WC WATER CLOSET

Area includes air-conditioner (AC) ledge, balcony, private enclosed space (PES) and strata void where applicable. Some units are mirror images of the floor plans shown in the brochure. Please refer to the key plan for orientation. The plans are subject to change as may be required or approved by the relevant authorities and do not form part of any offer or contract. Areas are estimates only and are subject to final survey. The balcony and PES shall not be enclosed unless with the approved balcony screen. For an illustration of the approved balcony screen, please refer to Annexure A of this brochure.

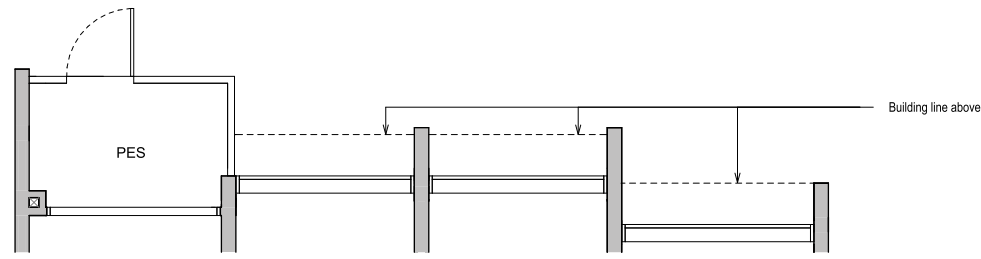


# 3-Bedroom

# 3-Bedroom

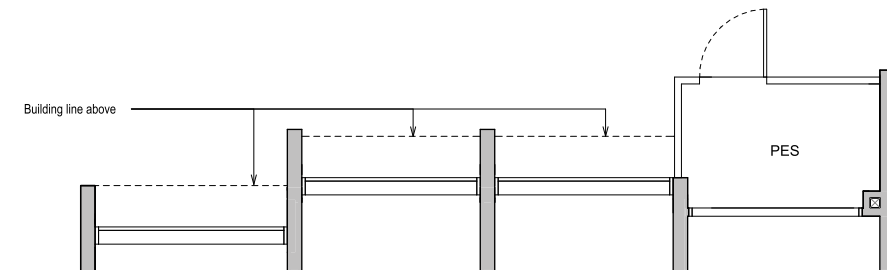
## TYPE C1(G) 84 sqm / 904 sqft

BLK 26  
#01-09



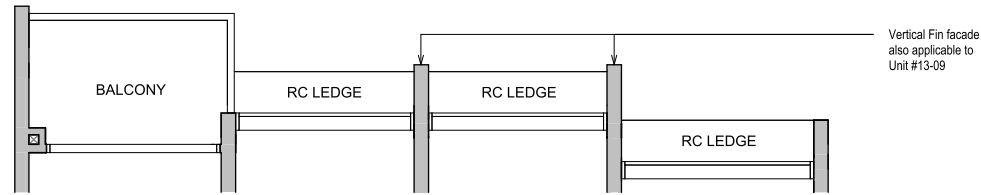
## TYPE C2(G) 87 sqm / 936 sqft

BLK 28  
#01-20



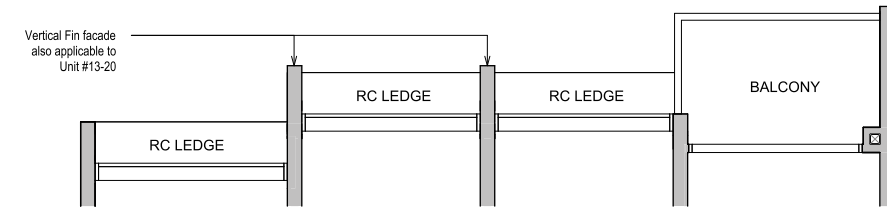
## TYPE C1 84 sqm / 904 sqft

BLK 26  
#02-09 to #12-09



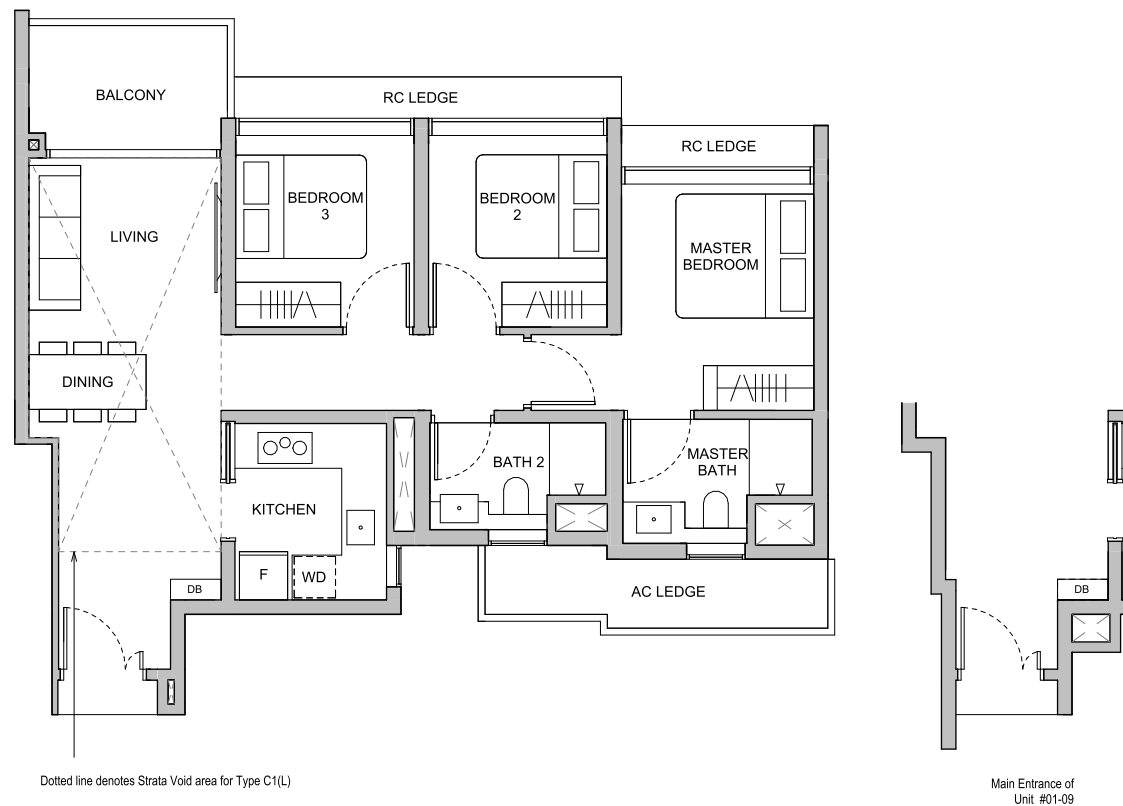
## TYPE C2 87 sqm / 936 sqft

BLK 28  
#02-20 to #12-20



## TYPE C1 84 sqm / 904 sqft

BLK 26  
#15-09 to #22-09



## TYPE C1(L) 101 sqm / 1087 sqft

Area is inclusive of Strata Void above living and dining as per dotted line

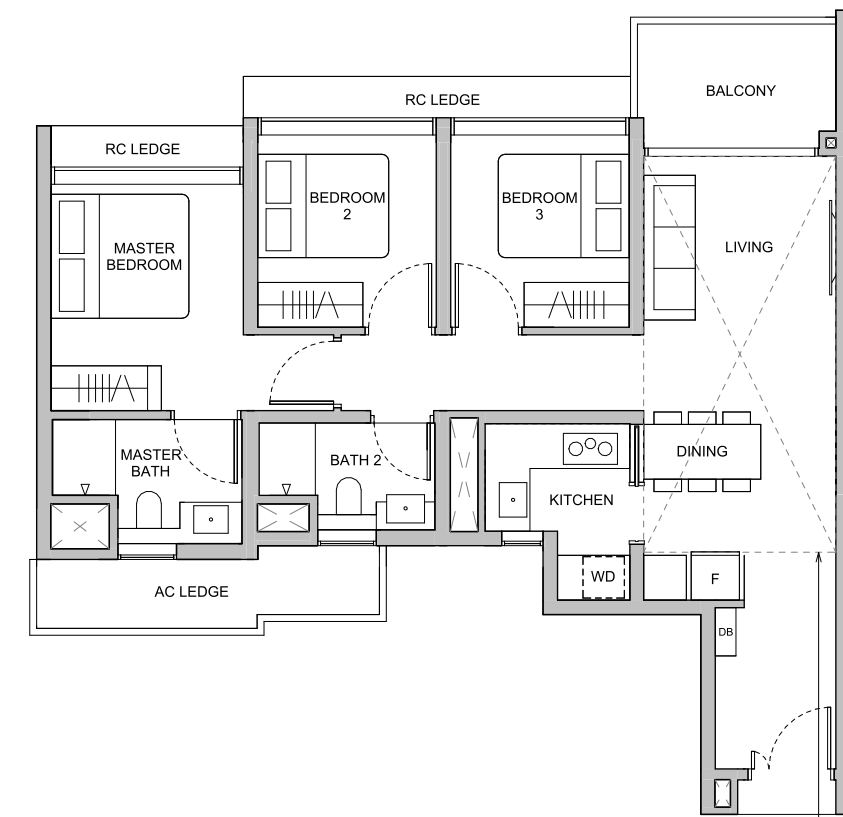
BLK 26  
#13-09  
#23-09

Dotted line denotes Strata Void area for Type C1(L)

Main Entrance of Unit #01-09

## TYPE C2 87 sqm / 936 sqft

BLK 28  
#15-20 to #22-20



## TYPE C2(L) 105 sqm / 1130 sqft

Area is inclusive of Strata Void above living and dining as per dotted line

BLK 28  
#13-20  
#23-20

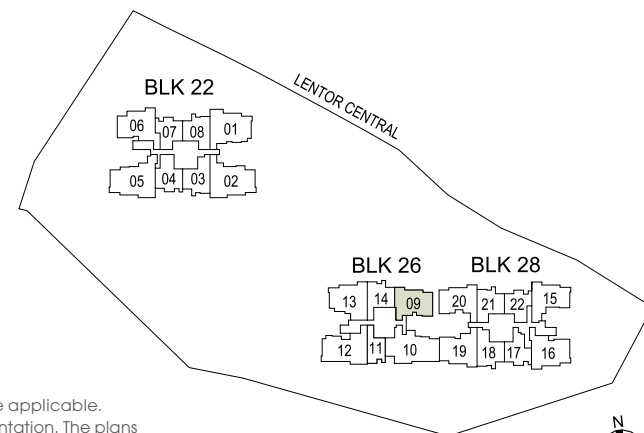
Dotted line denotes Strata Void area for Type C2(L)



Building Plan Reference No: A1986-00001-2022-BP01  
Building Plan Approval Date: 29 September 2023

DB DISTRIBUTION BOARD    WD WASHER CUM DRYER    W&D WASHER AND DRYER  
F FRIDGE    WC WATER CLOSET

Area includes air-conditioner (AC) ledge, balcony, private enclosed space (PES) and strata void where applicable. Some units are mirror images of the floor plans shown in the brochure. Please refer to the key plan for orientation. The plans are subject to change as may be required or approved by the relevant authorities and do not form part of any offer or contract. Areas are estimates only and are subject to final survey. The balcony and PES shall not be enclosed unless with the approved balcony screen. For an illustration of the approved balcony screen, please refer to Annexure A of this brochure.



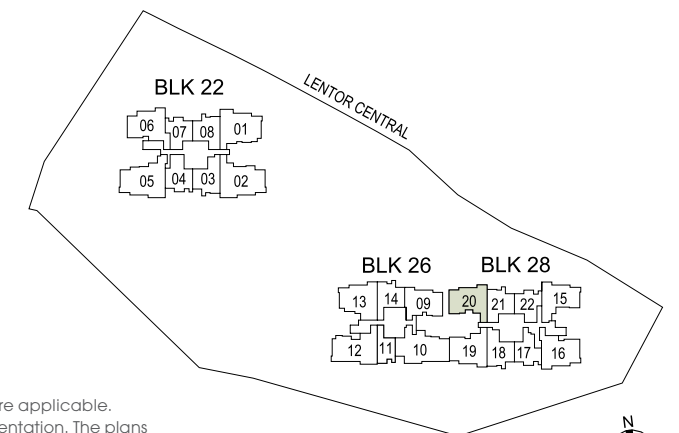
KEY PLAN NOT TO SCALE



Building Plan Reference No: A1986-00001-2022-BP01  
Building Plan Approval Date: 29 September 2023

DB DISTRIBUTION BOARD    WD WASHER CUM DRYER    W&D WASHER AND DRYER  
F FRIDGE    WC WATER CLOSET

Area includes air-conditioner (AC) ledge, balcony, private enclosed space (PES) and strata void where applicable. Some units are mirror images of the floor plans shown in the brochure. Please refer to the key plan for orientation. The plans are subject to change as may be required or approved by the relevant authorities and do not form part of any offer or contract. Areas are estimates only and are subject to final survey. The balcony and PES shall not be enclosed unless with the approved balcony screen. For an illustration of the approved balcony screen, please refer to Annexure A of this brochure.

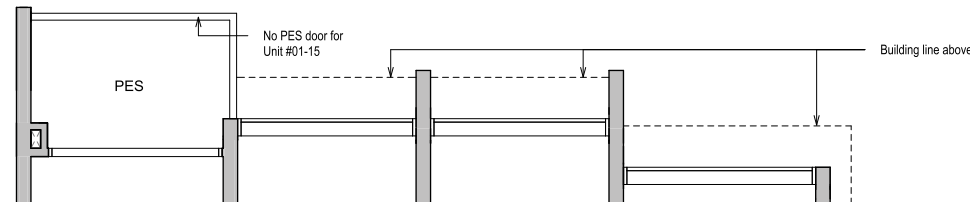


KEY PLAN NOT TO SCALE

# 3-Bedroom

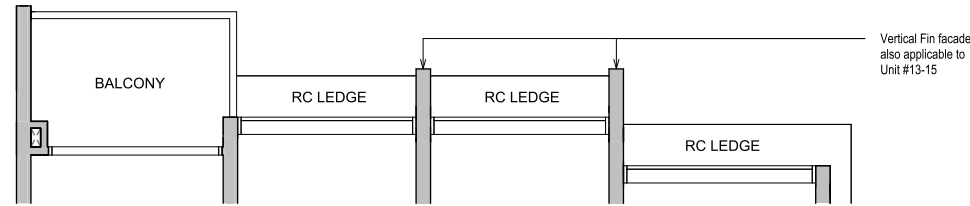
**TYPE C3(G)**  
88 sqm / 947 sqft

**BLK 28**  
#01-15



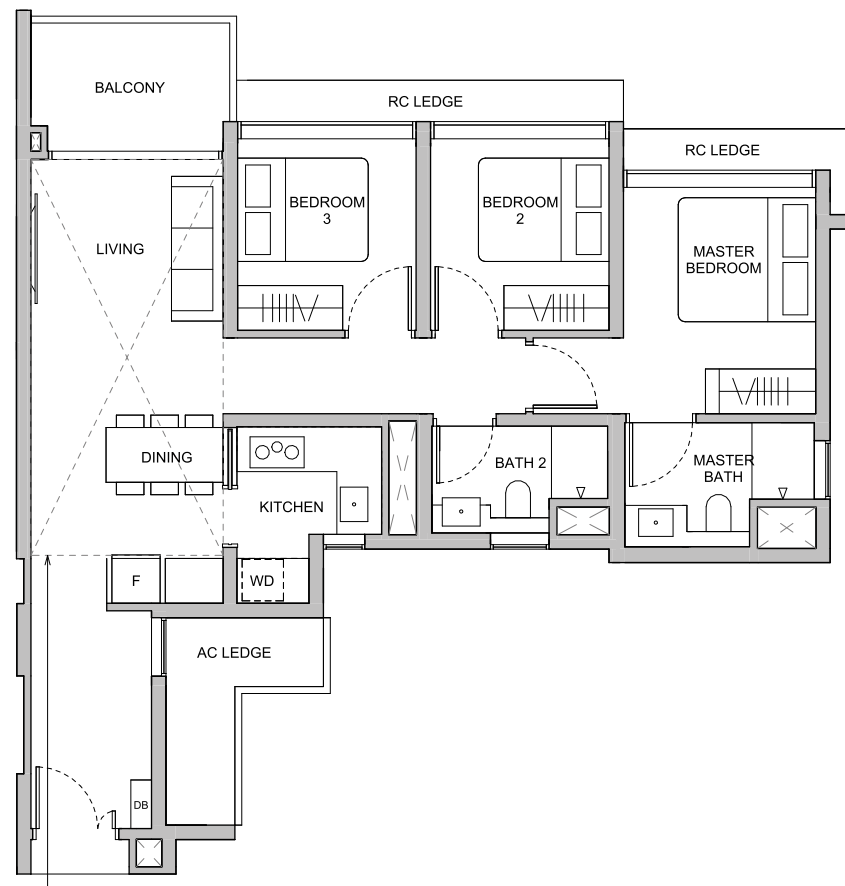
**TYPE C3**  
88 sqm / 947 sqft

**BLK 28**  
#02-15 to #12-15



**TYPE C3**  
88 sqm / 947 sqft

**BLK 28**  
#15-15 to #22-15



**TYPE C3(L)**  
106 sqm / 1141 sqft

Area is inclusive of Strata Void above living and dining as per dotted line

**BLK 28**  
#13-15  
#23-15

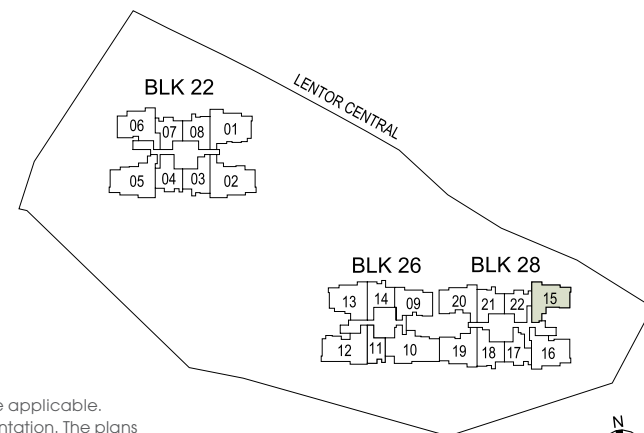
Dotted line denotes Strata Void area for Type C3(L)

0 1 3 5m

Building Plan Reference No: A1986-00001-2022-BP01  
Building Plan Approval Date: 29 September 2023

DB DISTRIBUTION BOARD  
F FRIDGE  
WD WASHER CUM DRYER  
WC WATER CLOSET  
W&D WASHER AND DRYER

Area includes air-conditioner (AC) ledge, balcony, private enclosed space (PES) and strata void where applicable. Some units are mirror images of the floor plans shown in the brochure. Please refer to the key plan for orientation. The plans are subject to change as may be required or approved by the relevant authorities and do not form part of any offer or contract. Areas are estimates only and are subject to final survey. The balcony and PES shall not be enclosed unless with the approved balcony screen. For an illustration of the approved balcony screen, please refer to Annexure A of this brochure.

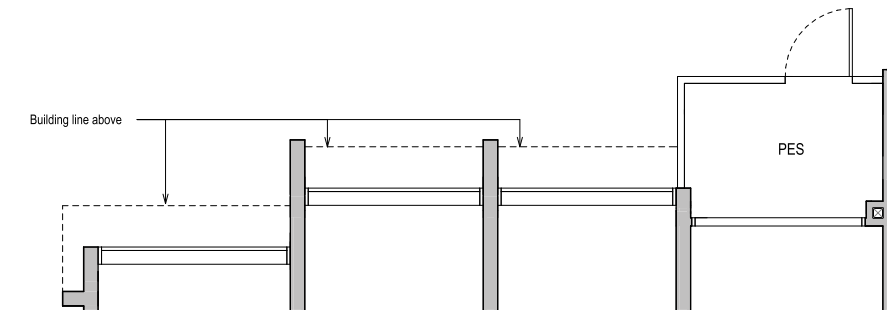


KEY PLAN NOT TO SCALE

# 3-Bedroom + Study

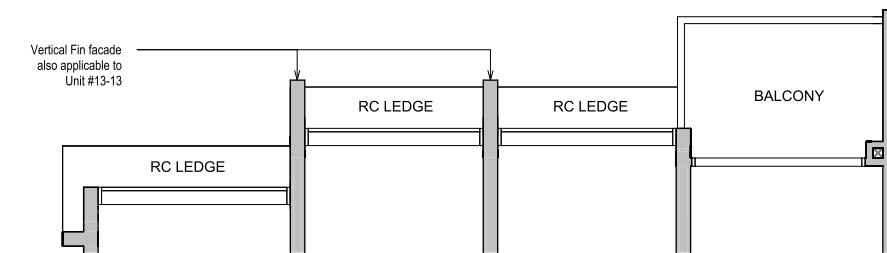
**TYPE C4S(G)**  
95 sqm / 1023 sqft

**BLK 26**  
#01-13



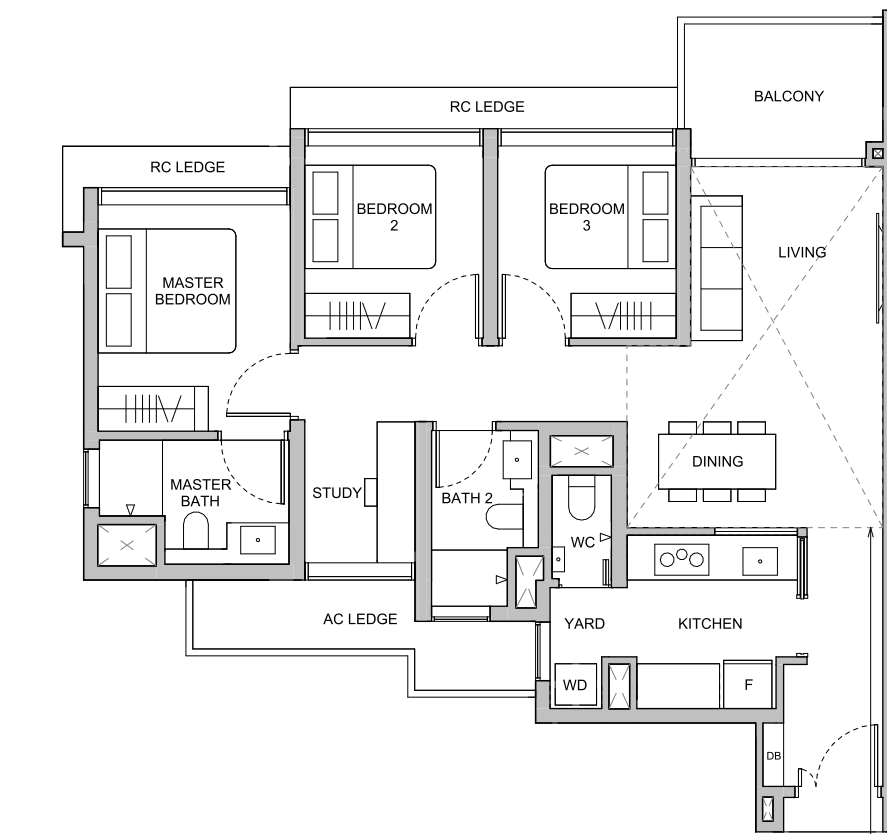
**TYPE C4S**  
95 sqm / 1023 sqft

**BLK 26**  
#02-13 to #12-13



**TYPE C4S**  
95 sqm / 1023 sqft

**BLK 26**  
#15-13 to #22-13



**TYPE C4S(L)**  
114 sqm / 1227 sqft

Area is inclusive of Strata Void above living and dining as per dotted line

**BLK 26**  
#13-13  
#23-13

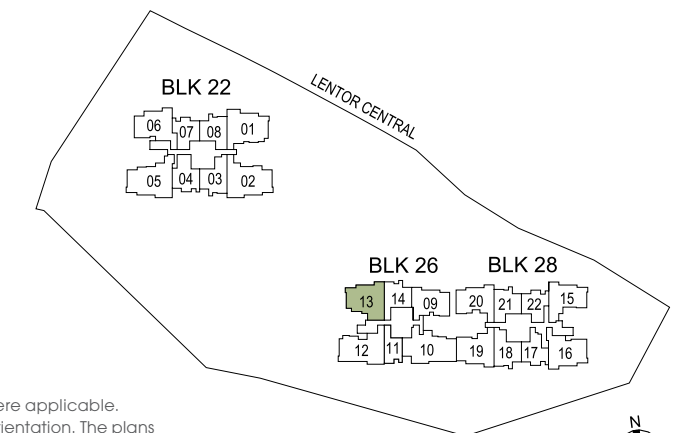
Dotted line denotes Strata Void area for Type C4S(L)

0 1 3 5m

Building Plan Reference No: A1986-00001-2022-BP01  
Building Plan Approval Date: 29 September 2023

DB DISTRIBUTION BOARD  
F FRIDGE  
WD WASHER CUM DRYER  
WC WATER CLOSET  
W&D WASHER AND DRYER

Area includes air-conditioner (AC) ledge, balcony, private enclosed space (PES) and strata void where applicable. Some units are mirror images of the floor plans shown in the brochure. Please refer to the key plan for orientation. The plans are subject to change as may be required or approved by the relevant authorities and do not form part of any offer or contract. Areas are estimates only and are subject to final survey. The balcony and PES shall not be enclosed unless with the approved balcony screen. For an illustration of the approved balcony screen, please refer to Annexure A of this brochure.



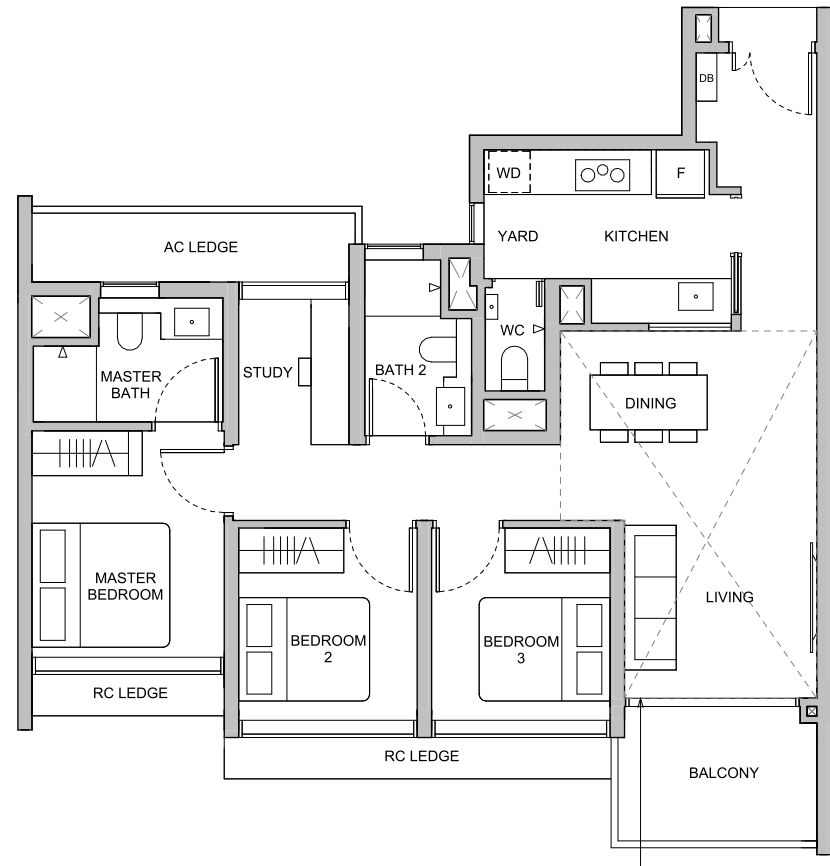
KEY PLAN NOT TO SCALE

# 3-Bedroom + Study

# 3-Bedroom + Study

**TYPE C5S**  
96 sqm / 1033 sqft

**BLK 28**  
#15-19 to #22-19



Dotted line denotes Strata Void area for Type C5S(L)

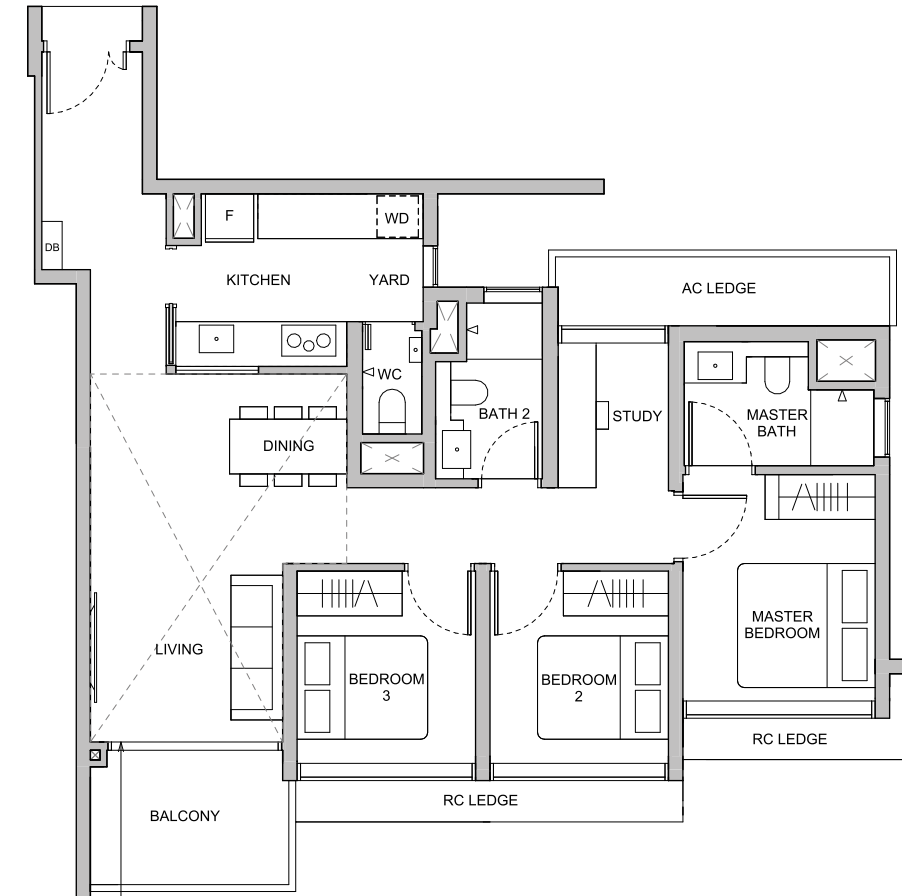
**TYPE C5S(L)**  
115 sqm / 1238 sqft

Area is inclusive of Strata Void above living and dining as per dotted line

**BLK 28**  
#13-19  
#23-19

**TYPE C6S**  
98 sqm / 1055 sqft

**BLK 28**  
#15-16 to #22-16



Dotted line denotes Strata Void area for Type C6S(L)

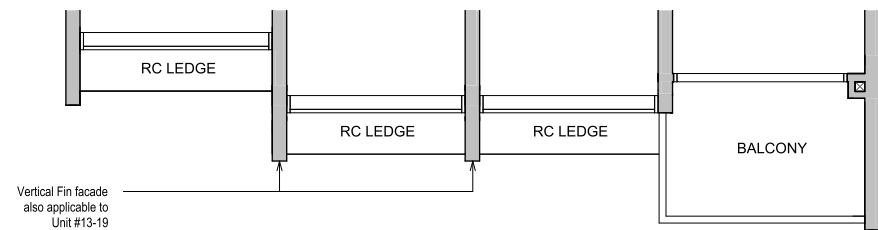
**TYPE C6S(L)**  
117 sqm / 1259 sqft

Area is inclusive of Strata Void above living and dining as per dotted line

**BLK 28**  
#13-16  
#23-16

**TYPE C5S**  
96 sqm / 1033 sqft

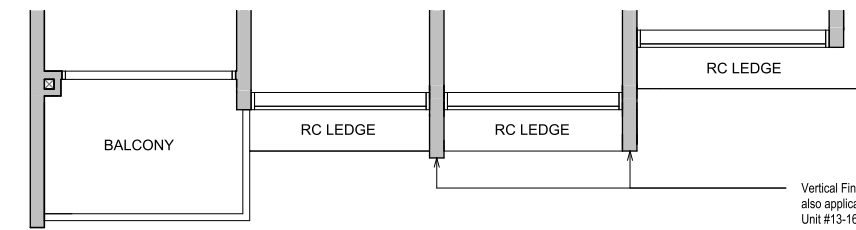
**BLK 28**  
#02-19 to #12-19



Vertical Fin facade also applicable to Unit #13-19

**TYPE C6S**  
98 sqm / 1055 sqft

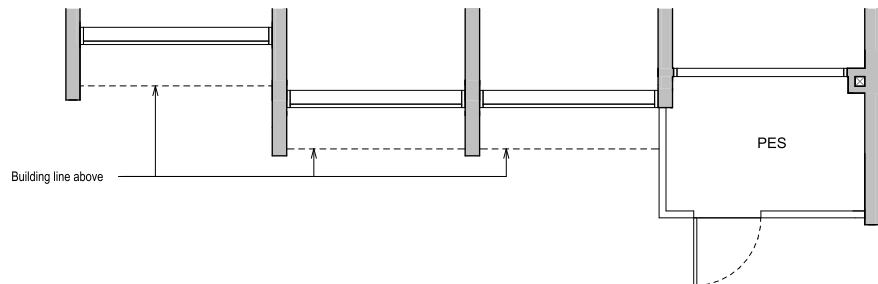
**BLK 28**  
#02-16 to #12-16



Vertical Fin facade also applicable to Unit #13-16

**TYPE C5S(G)**  
96 sqm / 1033 sqft

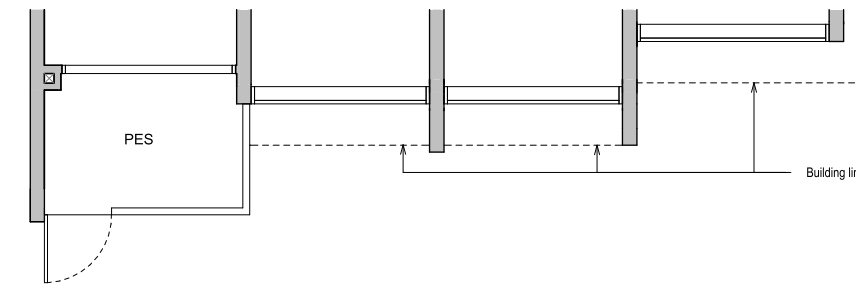
**BLK 28**  
#01-19



Building line above

**TYPE C6S(G)**  
98 sqm / 1055 sqft

**BLK 28**  
#01-16

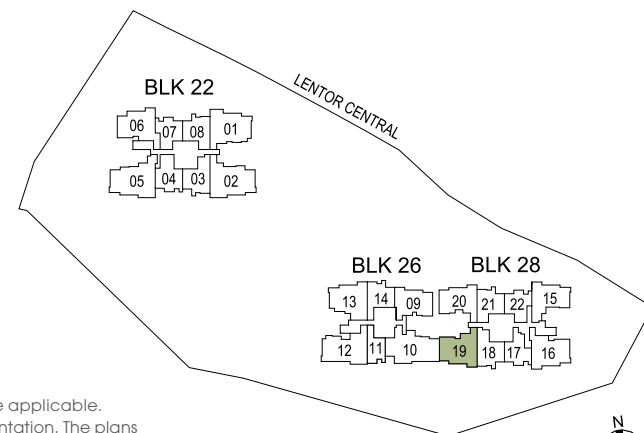


Building line above

0 1 3 5m  
Building Plan Reference No: A1986-00001-2022-BP01  
Building Plan Approval Date: 29 September 2023

DB DISTRIBUTION BOARD    WD WASHER CUM DRYER    W&D WASHER AND DRYER  
F FRIDGE    WC WATER CLOSET

Area includes air-conditioner (AC) ledge, balcony, private enclosed space (PES) and strata void where applicable. Some units are mirror images of the floor plans shown in the brochure. Please refer to the key plan for orientation. The plans are subject to change as may be required or approved by the relevant authorities and do not form part of any offer or contract. Areas are estimates only and are subject to final survey. The balcony and PES shall not be enclosed unless with the approved balcony screen. For an illustration of the approved balcony screen, please refer to Annexure A of this brochure.

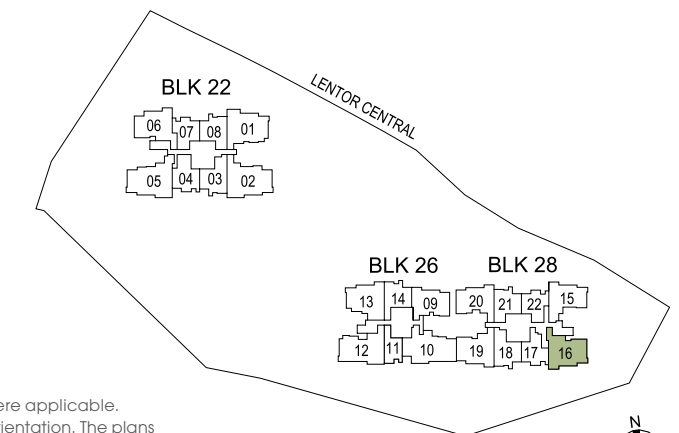


KEY PLAN NOT TO SCALE

0 1 3 5m  
Building Plan Reference No: A1986-00001-2022-BP01  
Building Plan Approval Date: 29 September 2023

DB DISTRIBUTION BOARD    WD WASHER CUM DRYER    W&D WASHER AND DRYER  
F FRIDGE    WC WATER CLOSET

Area includes air-conditioner (AC) ledge, balcony, private enclosed space (PES) and strata void where applicable. Some units are mirror images of the floor plans shown in the brochure. Please refer to the key plan for orientation. The plans are subject to change as may be required or approved by the relevant authorities and do not form part of any offer or contract. Areas are estimates only and are subject to final survey. The balcony and PES shall not be enclosed unless with the approved balcony screen. For an illustration of the approved balcony screen, please refer to Annexure A of this brochure.



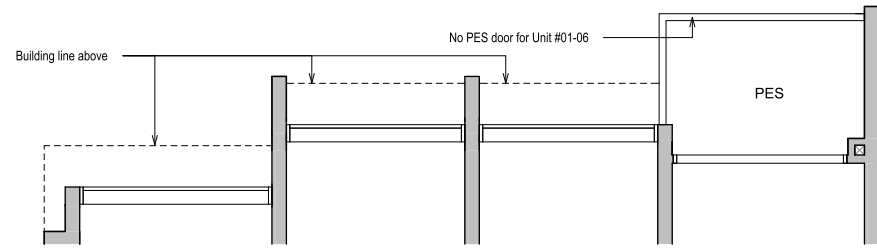
KEY PLAN NOT TO SCALE

# 3-Bedroom + Study

# 3-Bedroom Premium

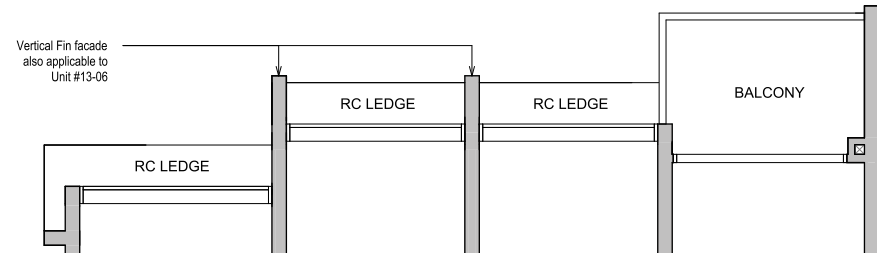
## TYPE C7S(G) 99 sqm / 1066 sqft

BLK 22  
#01-06



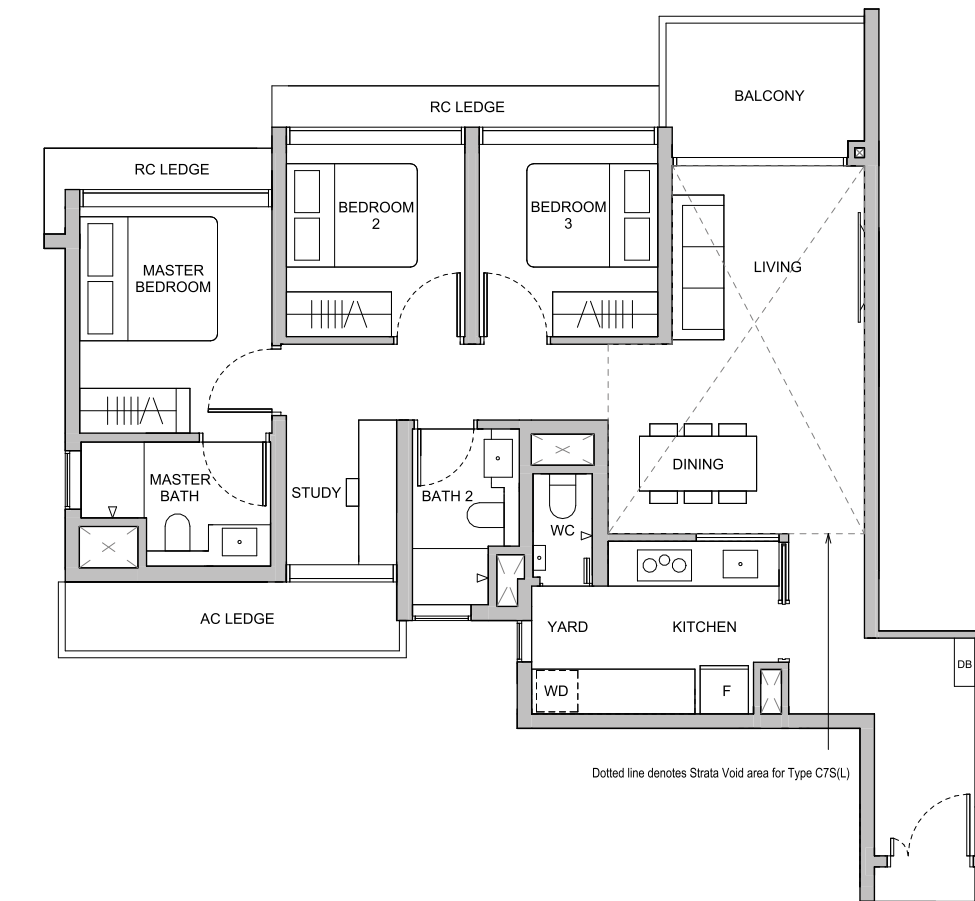
## TYPE C7S 99 sqm / 1066 sqft

BLK 22  
#02-06 to #12-06



## TYPE C7S 99 sqm / 1066 sqft

BLK 22  
#15-06 to #22-06



## TYPE C7S(L) 118 sqm / 1270 sqft

Area is inclusive of Strata Void above living and dining as per dotted line

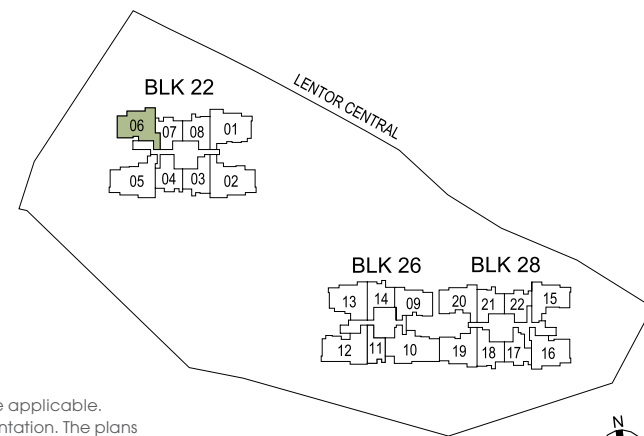
BLK 22  
#13-06  
#23-06



Building Plan Reference No: A1986-00001-2022-BP01  
Building Plan Approval Date: 29 September 2023

DB DISTRIBUTION BOARD    WD WASHER CUM DRYER    W&D WASHER AND DRYER  
F FRIDGE    WC WATER CLOSET

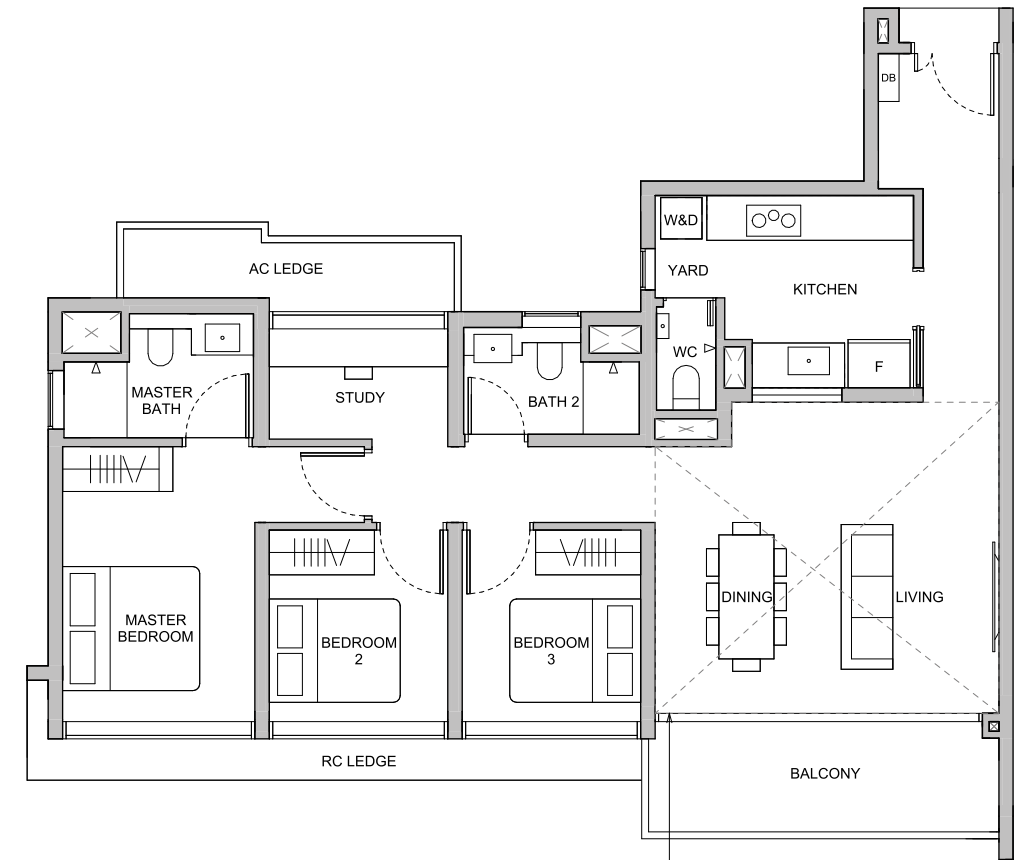
Area includes air-conditioner (AC) ledge, balcony, private enclosed space (PES) and strata void where applicable. Some units are mirror images of the floor plans shown in the brochure. Please refer to the key plan for orientation. The plans are subject to change as may be required or approved by the relevant authorities and do not form part of any offer or contract. Areas are estimates only and are subject to final survey. The balcony and PES shall not be enclosed unless with the approved balcony screen. For an illustration of the approved balcony screen, please refer to Annexure A of this brochure.



KEY PLAN NOT TO SCALE

## TYPE C8P 110 sqm / 1184 sqft

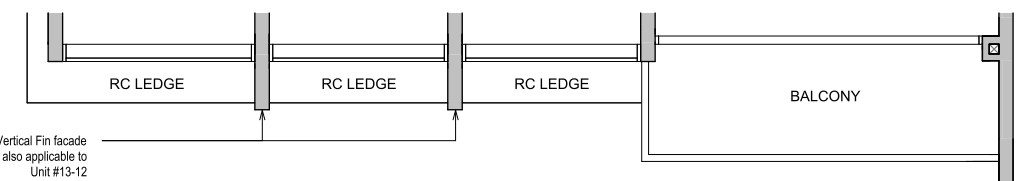
BLK 26  
#15-12 to #22-12



## TYPE C8P(L) 134 sqm / 1442 sqft

Area is inclusive of Strata Void above living and dining as per dotted line

BLK 26  
#13-12  
#23-12



## TYPE C8P 110 sqm / 1184 sqft

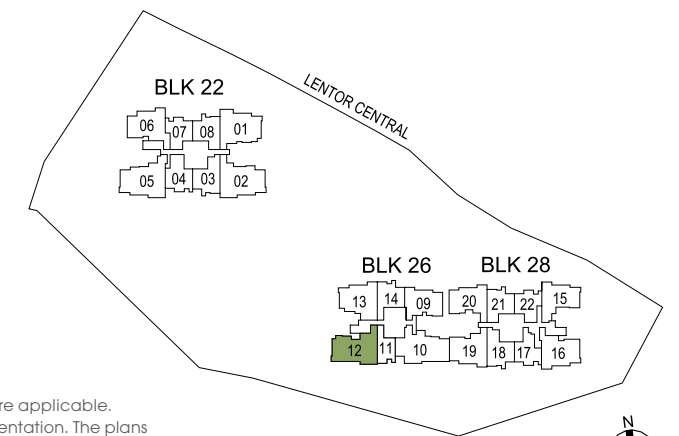
BLK 26  
#02-12 to #12-12



Building Plan Reference No: A1986-00001-2022-BP01  
Building Plan Approval Date: 29 September 2023

DB DISTRIBUTION BOARD    WD WASHER CUM DRYER    W&D WASHER AND DRYER  
F FRIDGE    WC WATER CLOSET

Area includes air-conditioner (AC) ledge, balcony, private enclosed space (PES) and strata void where applicable. Some units are mirror images of the floor plans shown in the brochure. Please refer to the key plan for orientation. The plans are subject to change as may be required or approved by the relevant authorities and do not form part of any offer or contract. Areas are estimates only and are subject to final survey. The balcony and PES shall not be enclosed unless with the approved balcony screen. For an illustration of the approved balcony screen, please refer to Annexure A of this brochure.



KEY PLAN NOT TO SCALE

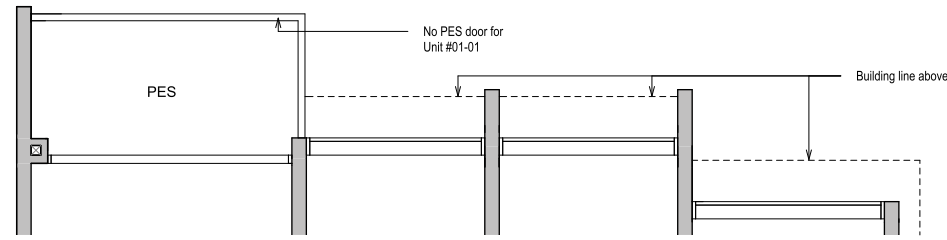


# 4-Bedroom Classic

# 4-Bedroom Premium

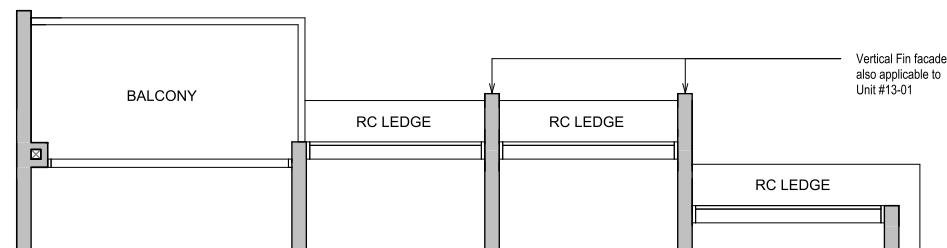
**TYPE D1C(G)**  
110 sqm / 1184 sqft

**BLK 22**  
#01-01



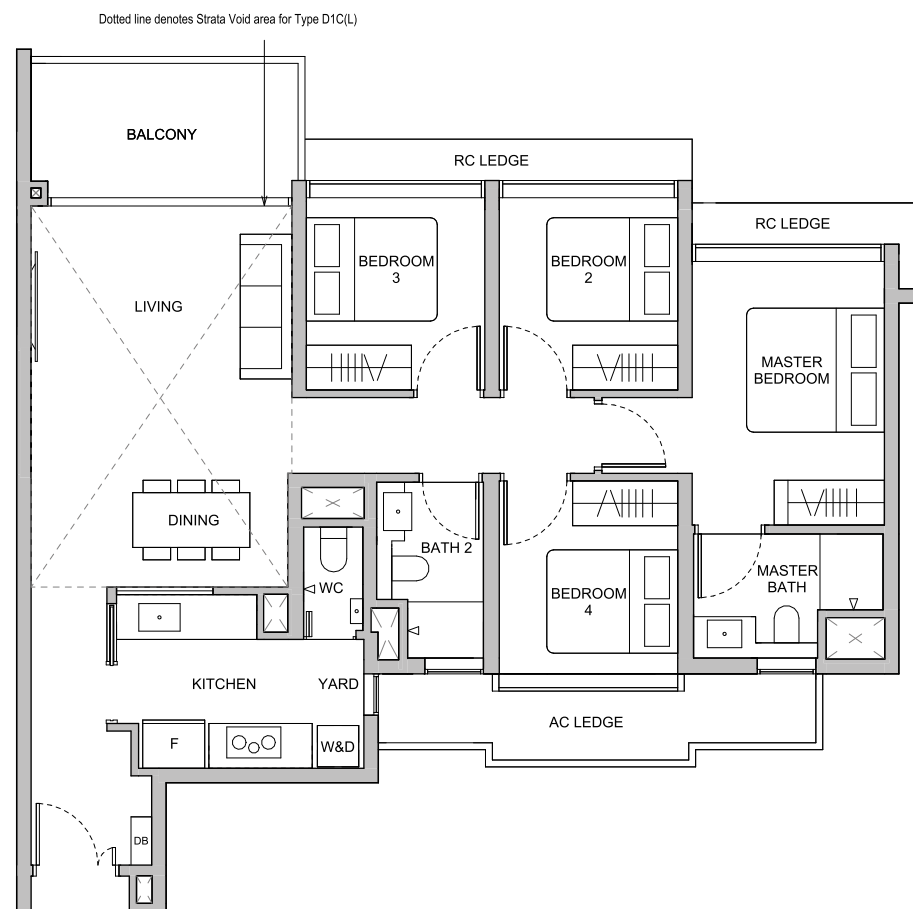
**TYPE D1C**  
110 sqm / 1184 sqft

**BLK 22**  
#02-01 to #12-01



**TYPE D1C**  
110 sqm / 1184 sqft

**BLK 22**  
#15-01 to #22-01



**TYPE D1C(L)**  
133 sqm / 1432 sqft

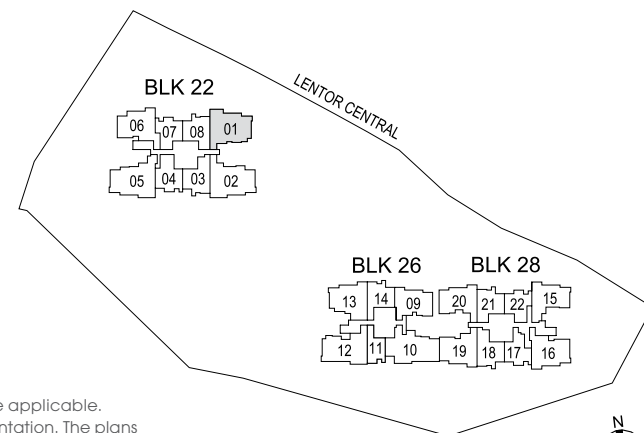
Area is inclusive of Strata Void above living and dining as per dotted line

**BLK 22**  
#13-01  
#23-01

0 1 3 5m  
Building Plan Reference No: A1986-00001-2022-BP01  
Building Plan Approval Date: 29 September 2023

DB DISTRIBUTION BOARD  
F FRIDGE  
WD WASHER CUM DRYER  
WC WATER CLOSET  
W&D WASHER AND DRYER

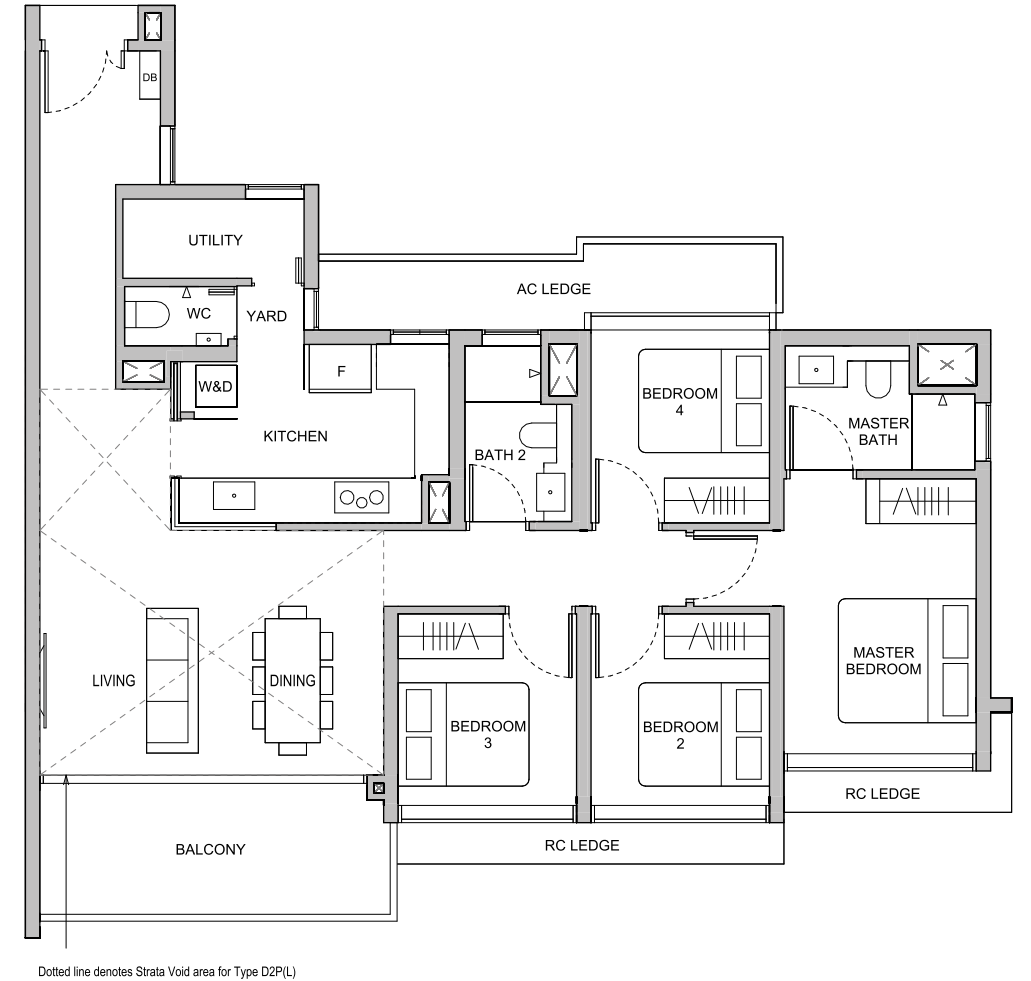
Area includes air-conditioner (AC) ledge, balcony, private enclosed space (PES) and strata void where applicable. Some units are mirror images of the floor plans shown in the brochure. Please refer to the key plan for orientation. The plans are subject to change as may be required or approved by the relevant authorities and do not form part of any offer or contract. Areas are estimates only and are subject to final survey. The balcony and PES shall not be enclosed unless with the approved balcony screen. For an illustration of the approved balcony screen, please refer to Annexure A of this brochure.



KEY PLAN NOT TO SCALE

**TYPE D2P**  
122 sqm / 1313 sqft

**BLK 22**  
#15-02 to #22-02



**TYPE D2P(L)**  
146 sqm / 1572 sqft

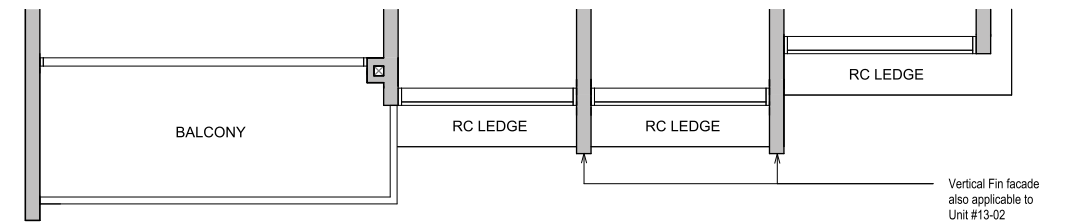
Area is inclusive of Strata Void above living and dining as per dotted line

**BLK 22**  
#13-02  
#23-02

Dotted line denotes Strata Void area for Type D2P(L)

**TYPE D2P**  
122 sqm / 1313 sqft

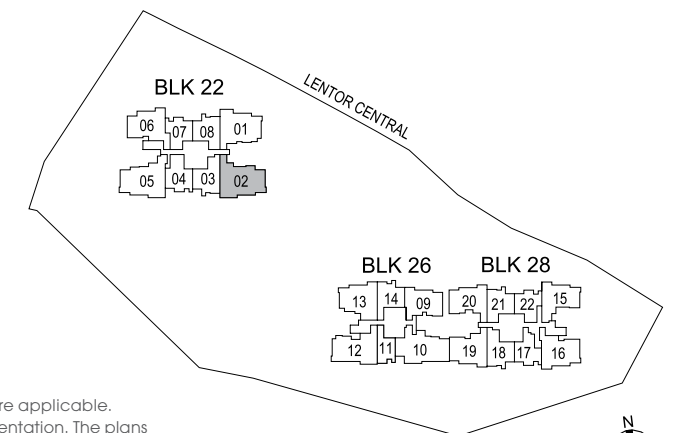
**BLK 22**  
#03-02 to #12-02



0 1 3 5m  
Building Plan Reference No: A1986-00001-2022-BP01  
Building Plan Approval Date: 29 September 2023

DB DISTRIBUTION BOARD  
F FRIDGE  
WD WASHER CUM DRYER  
WC WATER CLOSET  
W&D WASHER AND DRYER

Area includes air-conditioner (AC) ledge, balcony, private enclosed space (PES) and strata void where applicable. Some units are mirror images of the floor plans shown in the brochure. Please refer to the key plan for orientation. The plans are subject to change as may be required or approved by the relevant authorities and do not form part of any offer or contract. Areas are estimates only and are subject to final survey. The balcony and PES shall not be enclosed unless with the approved balcony screen. For an illustration of the approved balcony screen, please refer to Annexure A of this brochure.



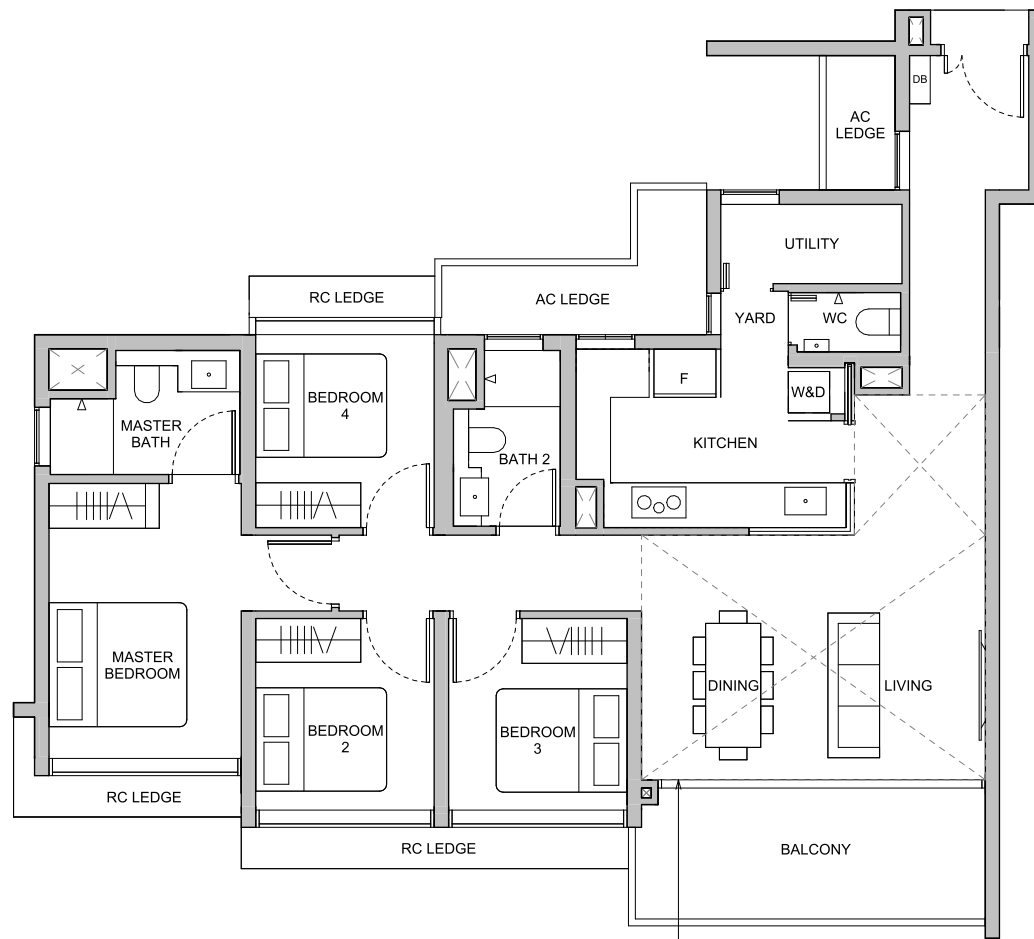
KEY PLAN NOT TO SCALE

# 4-Bedroom Premium

# 4-Bedroom Premium

**TYPE D3P**  
123 sqm / 1324 sqft

**BLK 22**  
#15-05 to #22-05



**TYPE D3P(L)**  
147 sqm / 1582 sqft

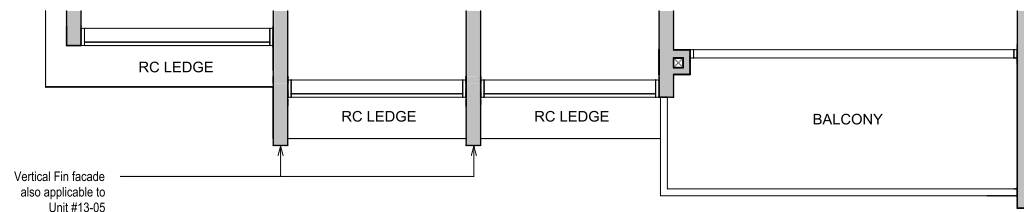
Area is inclusive of Strata Void above living and dining as per dotted line

**BLK 22**  
#13-05  
#23-05

Dotted line denotes Strata Void area for Type D3P(L)

**TYPE D3P**  
123 sqm / 1324 sqft

**BLK 22**  
#03-05 to #12-05

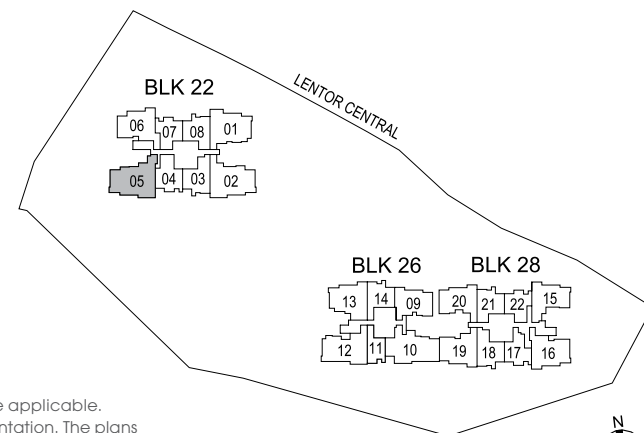


Vertical Fin facade also applicable to Unit #13-05

0 1 3 5m  
Building Plan Reference No: A1986-00001-2022-BP01  
Building Plan Approval Date: 29 September 2023

DB DISTRIBUTION BOARD    WD WASHER CUM DRYER    W&D WASHER AND DRYER  
F FRIDGE    WC WATER CLOSET

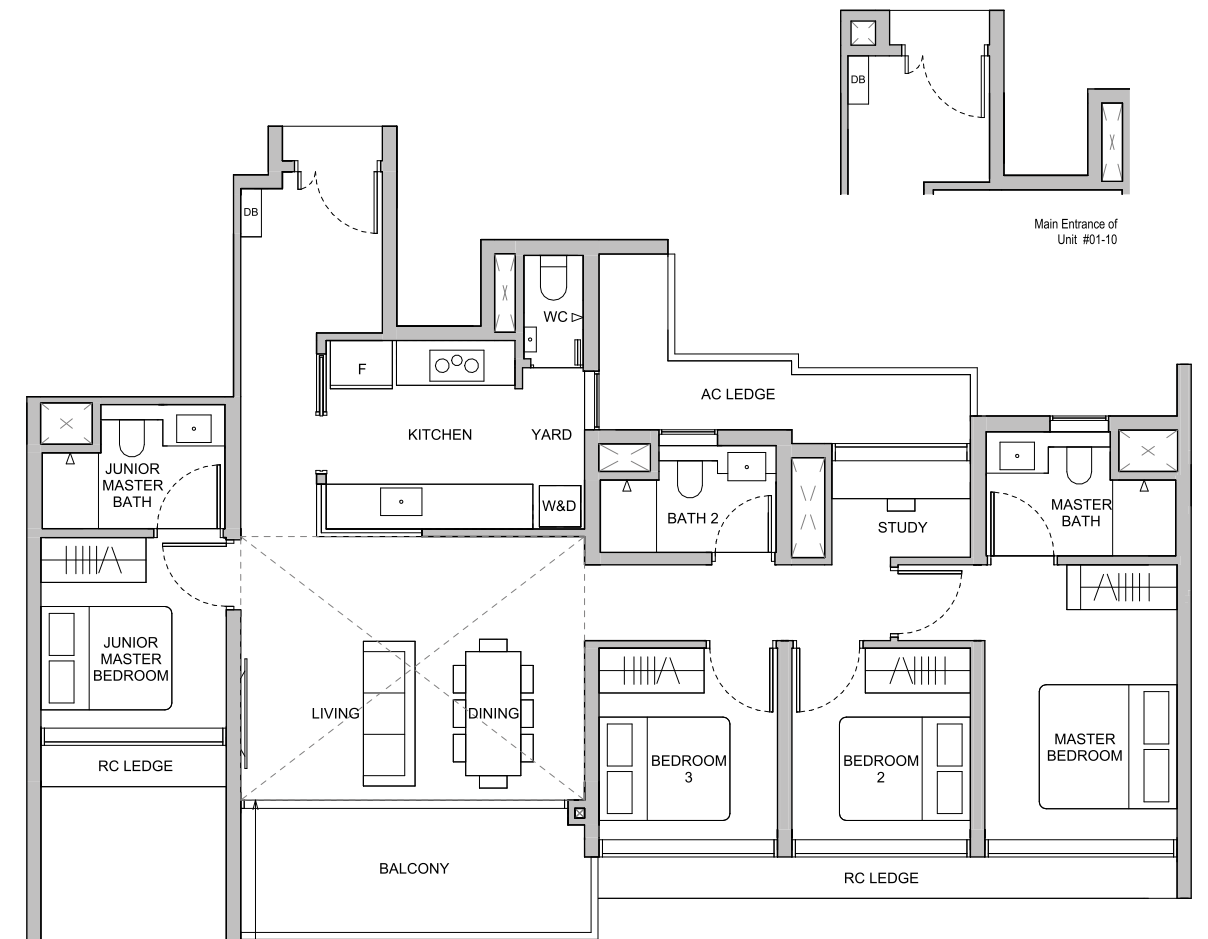
Area includes air-conditioner (AC) ledge, balcony, private enclosed space (PES) and strata void where applicable. Some units are mirror images of the floor plans shown in the brochure. Please refer to the key plan for orientation. The plans are subject to change as may be required or approved by the relevant authorities and do not form part of any offer or contract. Areas are estimates only and are subject to final survey. The balcony and PES shall not be enclosed unless with the approved balcony screen. For an illustration of the approved balcony screen, please refer to Annexure A of this brochure.



KEY PLAN NOT TO SCALE

**TYPE D4P**  
125 sqm / 1346 sqft

**BLK 26**  
#15-10 to #22-10



**TYPE D4P(L)**  
146 sqm / 1572 sqft

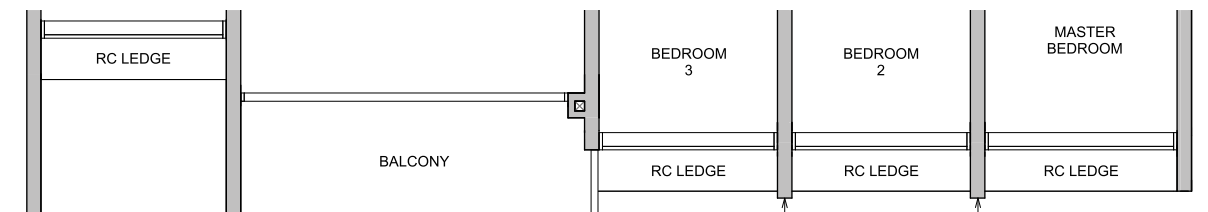
Area is inclusive of Strata Void above living and dining as per dotted line

**BLK 26**  
#13-10  
#23-10

Dotted line denotes Strata Void area for Type D4P(L)

**TYPE D4P**  
125 sqm / 1346 sqft

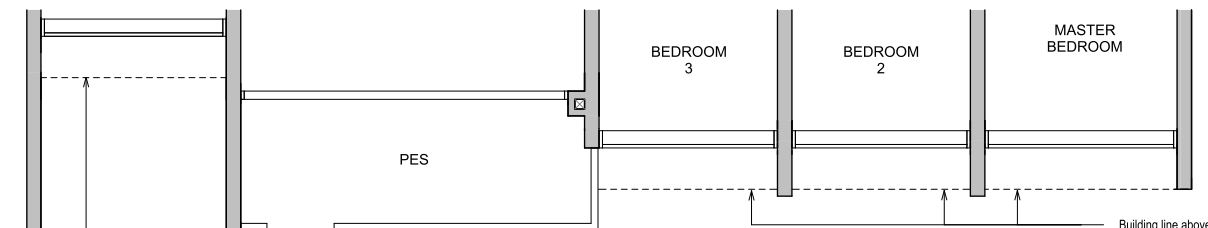
**BLK 26**  
#02-10 to #12-10



Vertical Fin facade also applicable to Unit #13-10

**TYPE D4P(G)**  
124 sqm / 1335 sqft

**BLK 26**  
#01-10



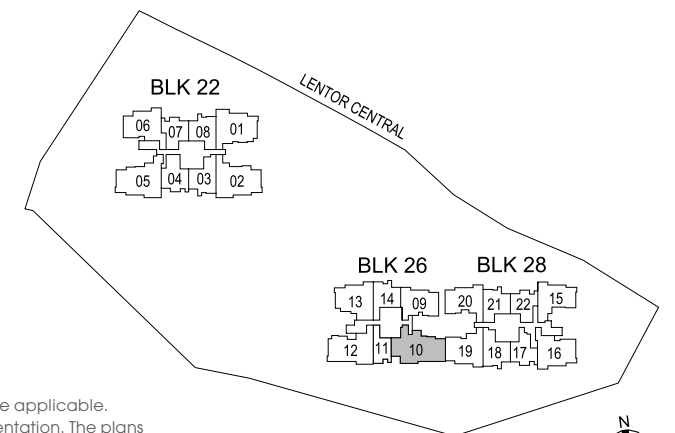
Building line above

Building line above

0 1 3 5m  
Building Plan Reference No: A1986-00001-2022-BP01  
Building Plan Approval Date: 29 September 2023

DB DISTRIBUTION BOARD    WD WASHER CUM DRYER    W&D WASHER AND DRYER  
F FRIDGE    WC WATER CLOSET

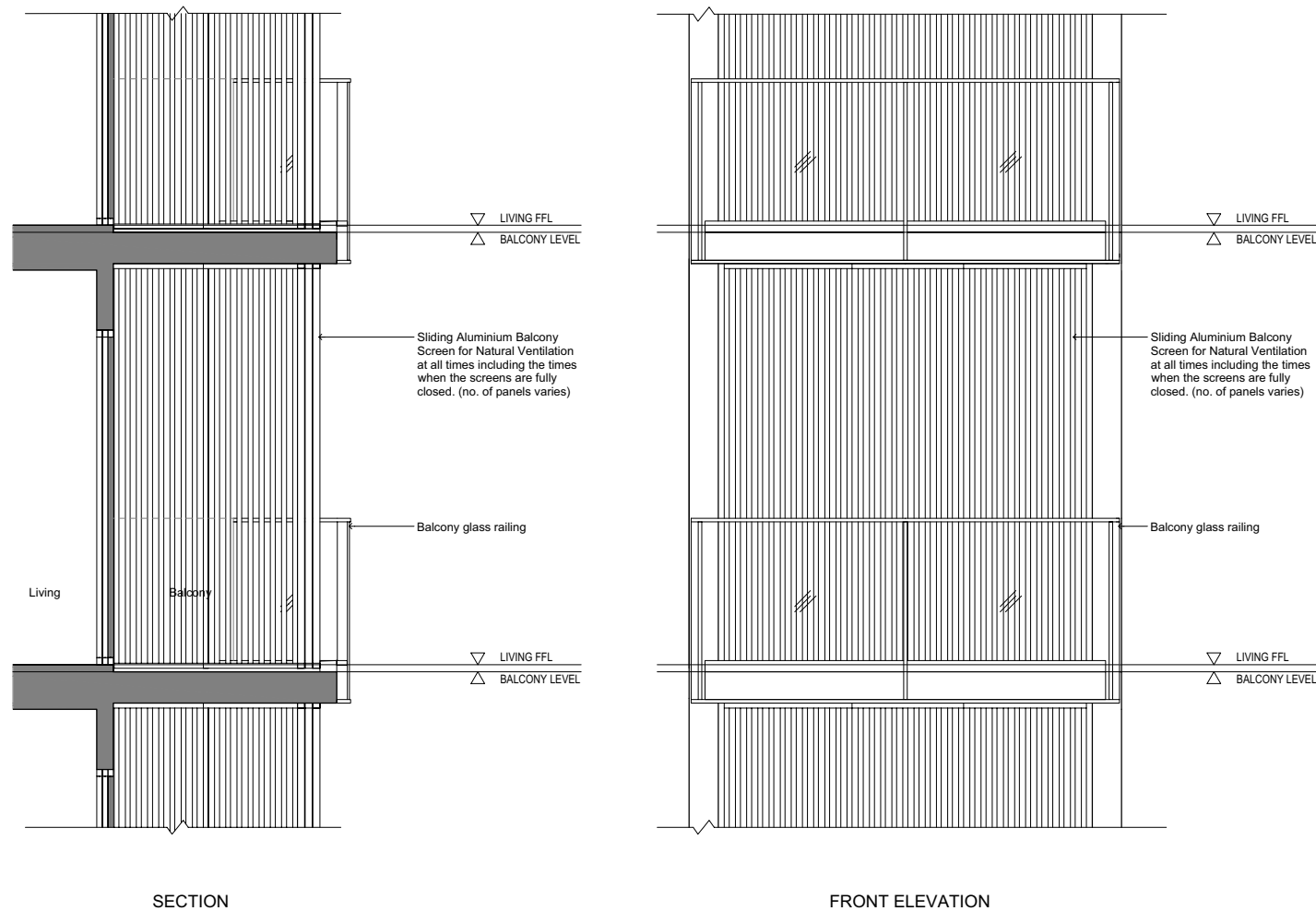
Area includes air-conditioner (AC) ledge, balcony, private enclosed space (PES) and strata void where applicable. Some units are mirror images of the floor plans shown in the brochure. Please refer to the key plan for orientation. The plans are subject to change as may be required or approved by the relevant authorities and do not form part of any offer or contract. Areas are estimates only and are subject to final survey. The balcony and PES shall not be enclosed unless with the approved balcony screen. For an illustration of the approved balcony screen, please refer to Annexure A of this brochure.



KEY PLAN NOT TO SCALE

# Annexure A

## Approved Balcony Screen

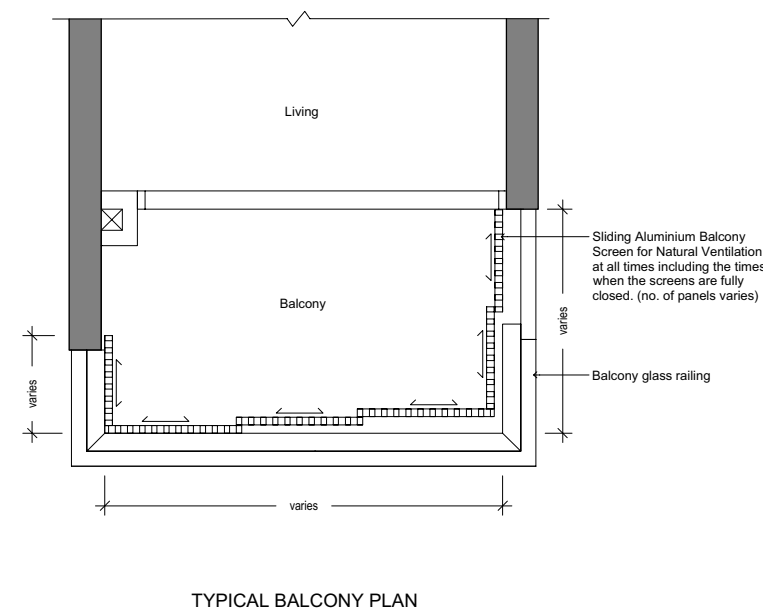


Jointly Developed By:



### NOTES:

1. The balcony/ private enclosed space (PES) shall not be enclosed unless with the approved balcony screen. For the approved balcony screen, please refer to the illustration.
2. The balcony screen shall allow natural ventilation at all times including when the screens are fully closed.
3. The balcony screen will not be provided in the depicted units and development.
4. The Purchaser may opt to pre-install the balcony screen.
5. The cost of balcony screen and installation shall be borne by the Purchaser.
6. The drawing is not drawn to scale and is solely for reference purpose only. Please take measurements at actual unit before commencement of work.
7. Material to be of aluminium with powder coated finish to match the colour of aluminium door/ window frame. Approval from the Management is required before installation.
8. Fixing detail by the Purchaser's contractor, and fixing shall not damage waterproofing of existing structure.
9. The Purchaser shall refer to the Management for any additional details required.



DISCLAIMER: The information and contents herein are current at the time of printing and are provided on an "as is" and "as available" basis. While all reasonable care has been taken in preparing this brochure, the developer and its agents shall not be held responsible for any inaccuracies or the completeness of the information and contents herein. All renderings, illustrations, pictures, photographs and other graphic representations and references are artist's impression(s) only and may be subject to changes and deviation as further made by the developer or as required by the relevant authorities. Nothing herein shall form part of an offer or contract or be construed as any representations by the developer or its agents. The plans drawn herein may not be to scale, and the areas and measurements stated herein are approximate and are subject to adjustments on final survey.

Developer: Lentor Central Developments Pte. Ltd. (UEN: 202234590D) • Housing Developer's Licence No.: C1467 • Lot No.: Lot(s) 05423M MK 20 at Lentor Central • Tenure of Land: 99 years commencing from 19 December 2022 • Encumbrances on Land: Mortgage in favour of Oversea-Chinese Banking Corporation Limited • Expected Date of Vacant Possession: 15 January 2028 • Expected Date of Legal Completion: 15 January 2031 • BP No.: A1986-00001-2022-BP01 dated 29 September 2023