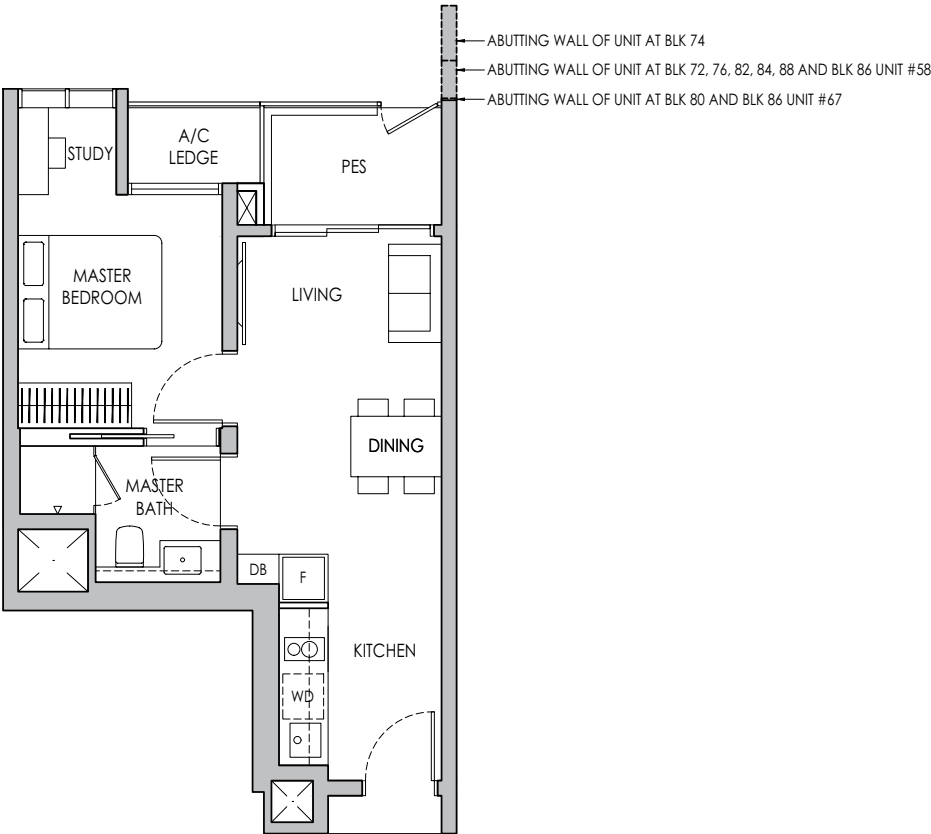


1-BEDROOM + STUDY

Type A1S(p)

44 sq m / 474 sq ft

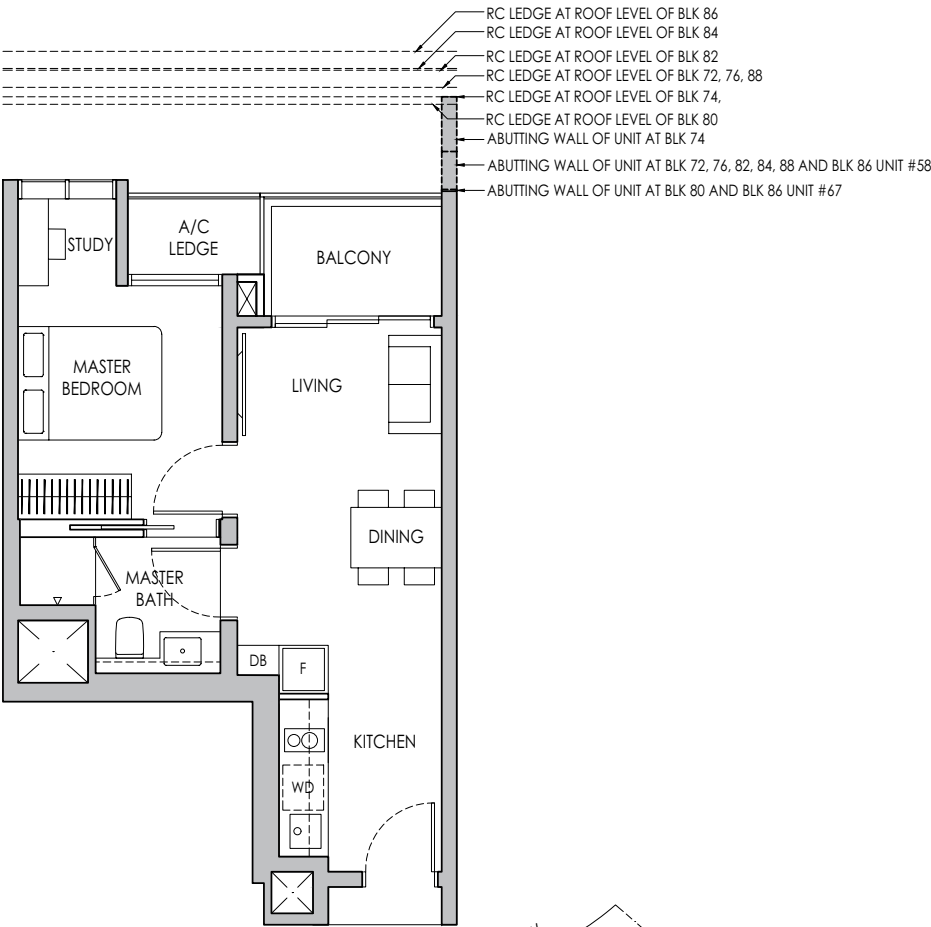
- BLK 72 #04-08*
- BLK 74 #04-09 / #04-16*
- BLK 76 #04-17
- BLK 80 #04-40*
- BLK 82 #04-48*
- BLK 84 #04-56*
- BLK 86 #04-58 / #04-67*
- BLK 88 #04-75*



Type A1S

44 sq m / 474 sq ft

- BLK 72 #05-08* - # 11-08*
- BLK 74 #05-09 - #11-09 / #05-16* - #11-16*
- BLK 76 #05-17 - #12-17
- BLK 80 #05-40* - #13-40*
- BLK 82 #05-48* - #13-48*
- BLK 84 #05-56* - #13-56*
- BLK 86 #05-58 - #13-58 / #05-67* - #13-67*
- BLK 88 #05-75* - #11-75*



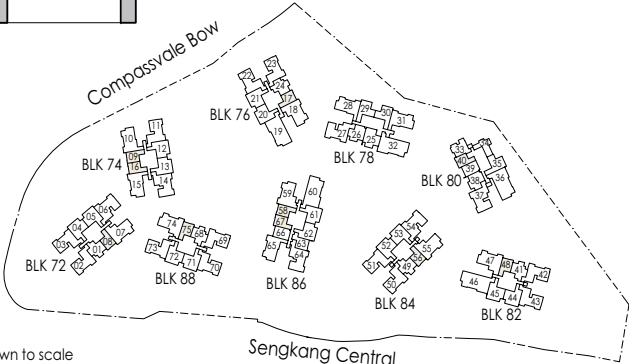
* Mirror Image



Area includes air-con (A/C) ledge, private enclosed space (PES), balcony and strata void area where applicable. Some units are mirror images of the apartment plans shown in the brochure. Please refer to the keyplan for orientation. The plans are subject to change as may be approved by relevant authorities. All floor plans are approximate measurements only and are subject to government re-survey. The balcony shall not be enclosed unless with the approved balcony screen. For an illustration of the approved balcony screen, please refer to the diagram annexed hereto as "Annexure A".



Keyplan is not drawn to scale

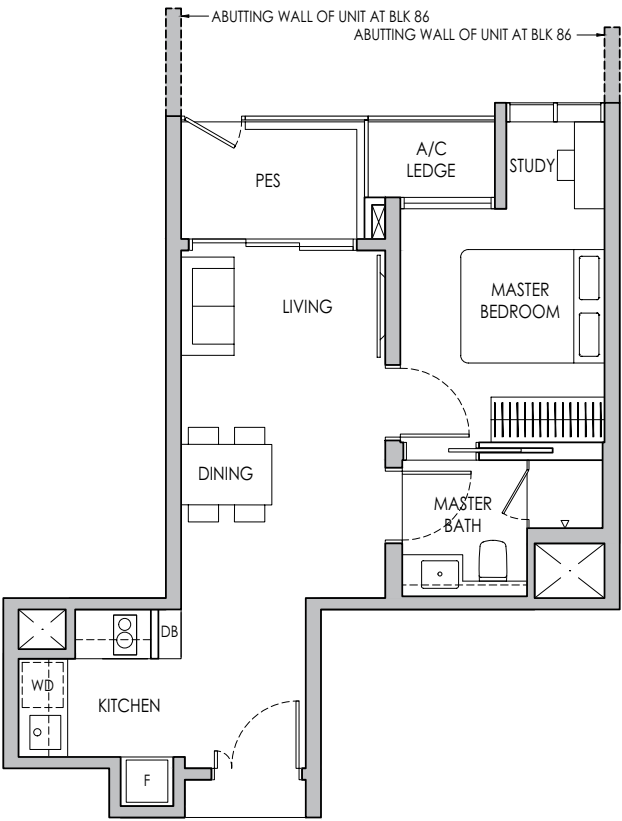


1-BEDROOM + STUDY

Type A2S(p)

46 sq m / 495 sq ft

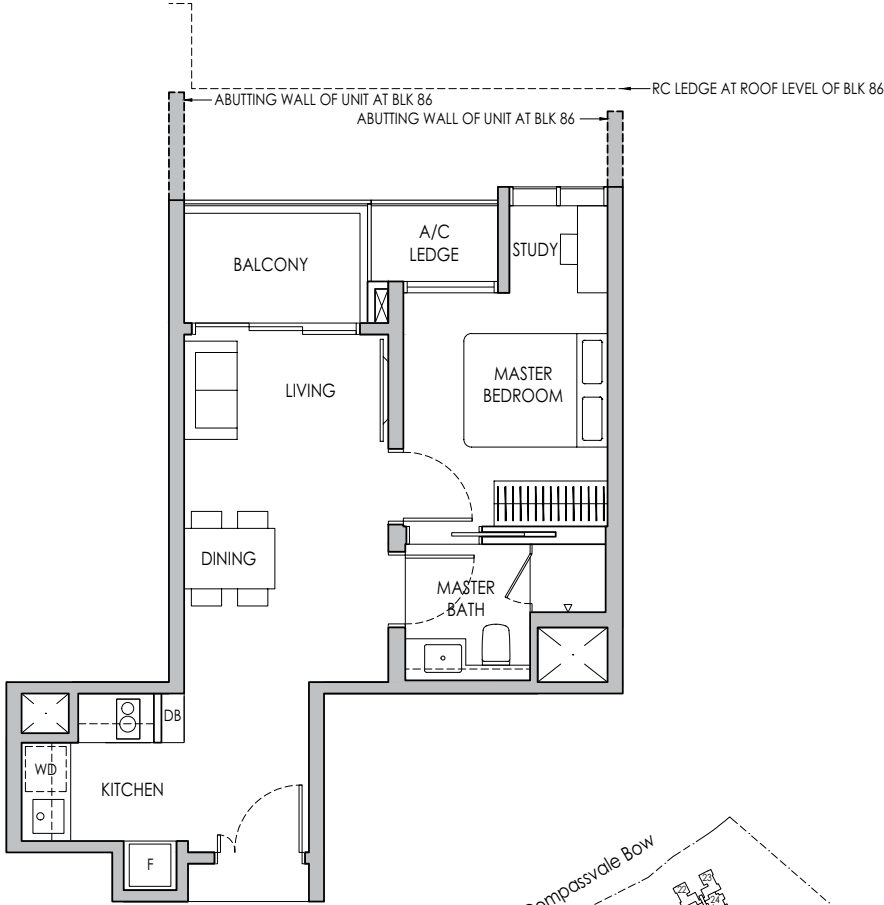
BLK 86: #04-63



Type A2S

46 sq m / 495 sq ft

BLK 86: #05-63 - #13-63



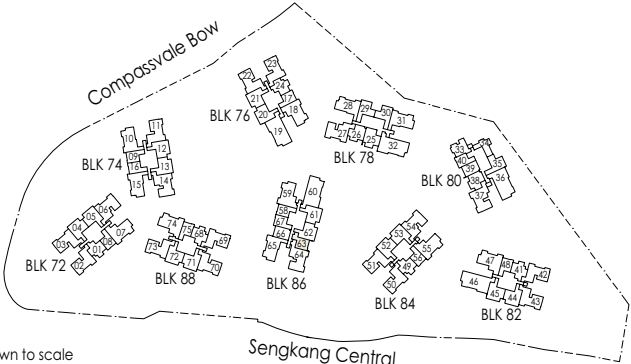
* Mirror Image



Area includes air-con (A/C) ledge, private enclosed space (PES), balcony and strata void area where applicable. Some units are mirror images of the apartment plans shown in the brochure. Please refer to the keyplan for orientation. The plans are subject to change as may be approved by relevant authorities. All floor plans are approximate measurements only and are subject to government re-survey. The balcony shall not be enclosed unless with the approved balcony screen. For an illustration of the approved balcony screen, please refer to the diagram annexed hereto as "Annexure A".



Keyplan is not drawn to scale



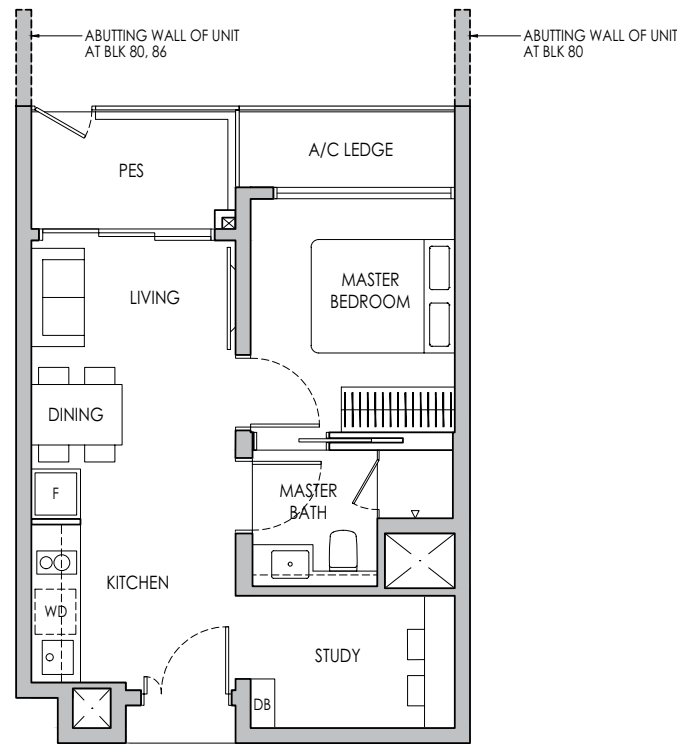
1-BEDROOM + STUDY

Type A3S(p)

47 sq m / 506 sq ft

BLK 80 #04-39

BLK 86 #04-66*

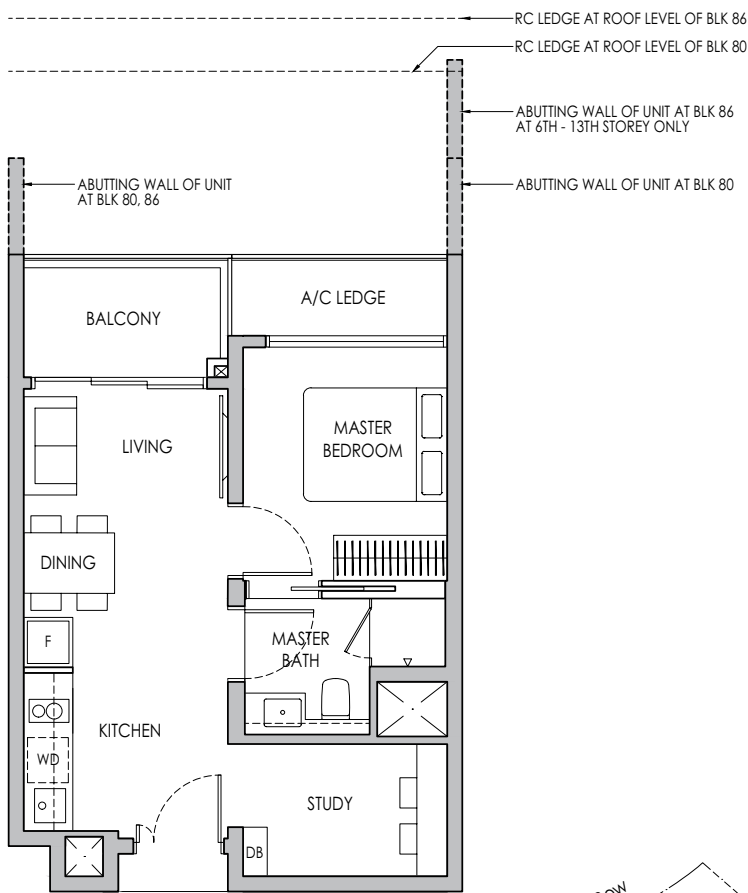


Type A3S

47 sq m / 506 sq ft

BLK 80 #05-39 - #13-39

BLK 86 #05-66* - #13-66*



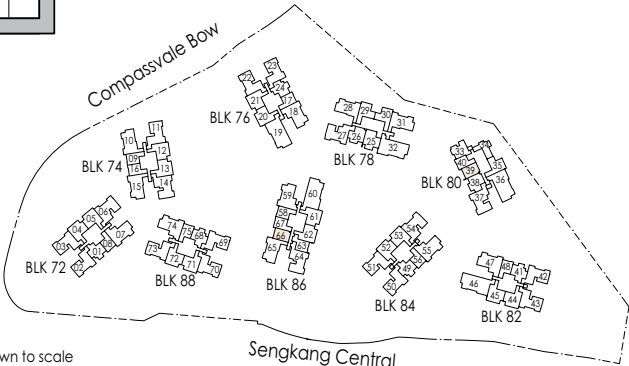
* Mirror Image



Area includes air-con (A/C) ledge, private enclosed space (PES), balcony and strata void area where applicable. Some units are mirror images of the apartment plans shown in the brochure. Please refer to the keyplan for orientation. The plans are subject to change as may be approved by relevant authorities. All floor plans are approximate measurements only and are subject to government re-survey. The balcony shall not be enclosed unless with the approved balcony screen. For an illustration of the approved balcony screen, please refer to the diagram annexed hereto as "Annexure A".



Keyplan is not drawn to scale

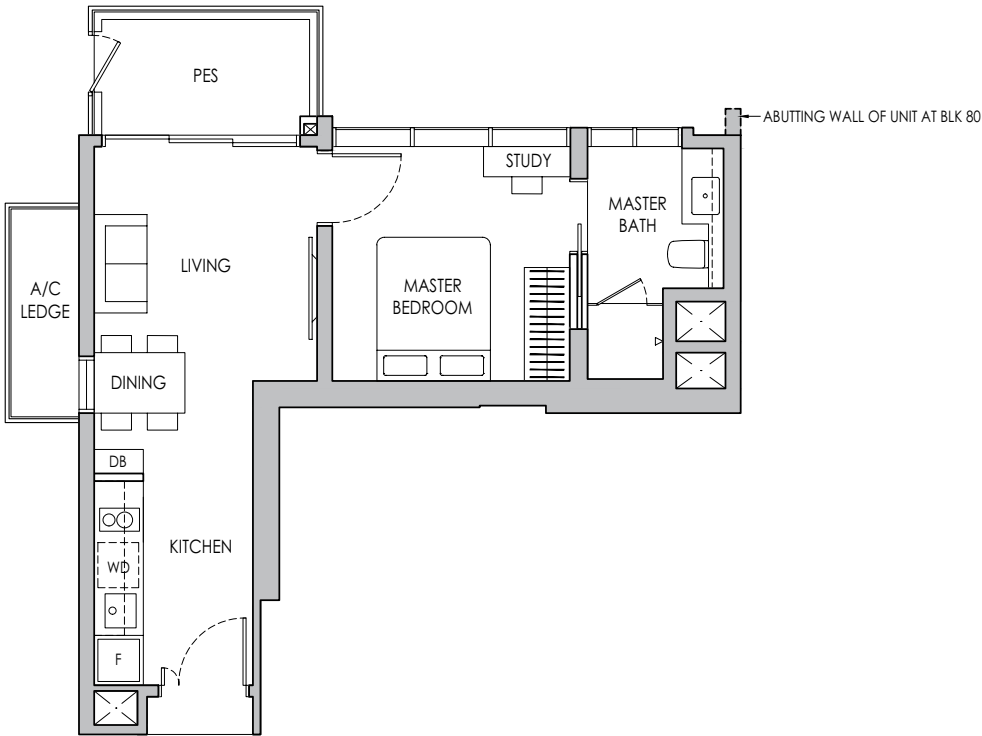


1-BEDROOM + STUDY

Type A4S(p)

47 sq m / 506 sq ft

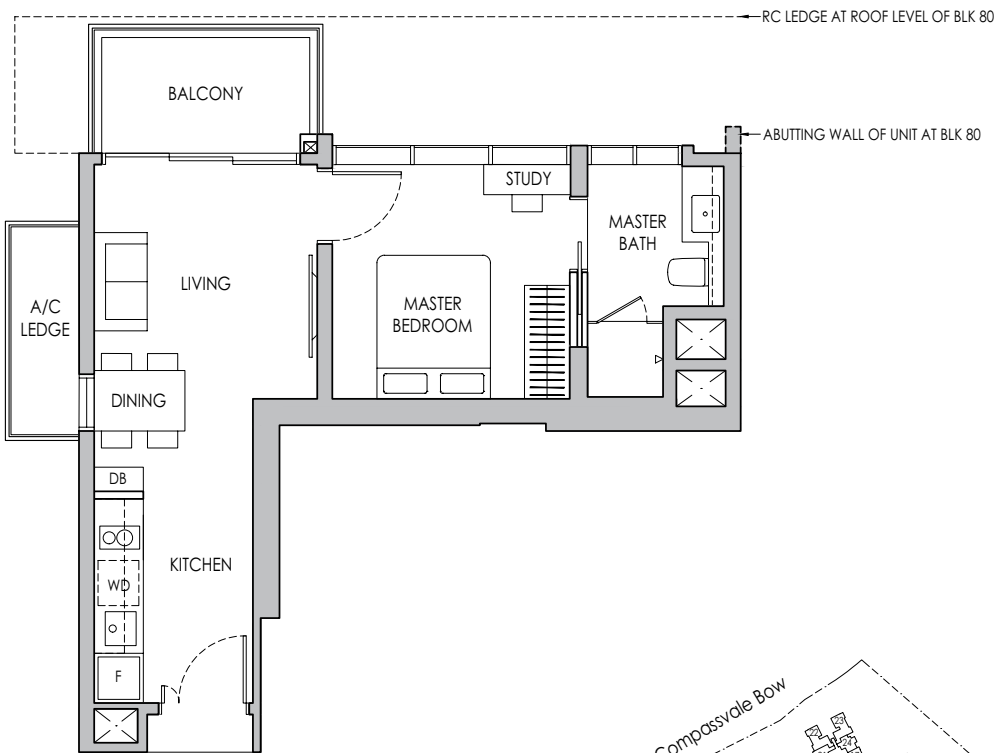
BLK 80 #04-34



Type A4S

47 sq m / 506 sq ft

BLK 80 #05-34 - #13-34



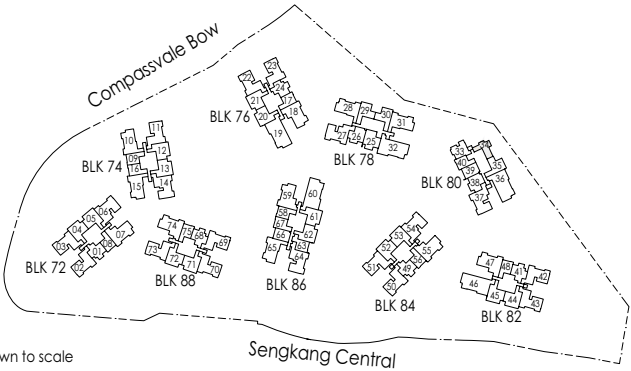
* Mirror Image



Area includes air-con (A/C) ledge, private enclosed space (PES), balcony and strata void area where applicable. Some units are mirror images of the apartment plans shown in the brochure. Please refer to the keyplan for orientation. The plans are subject to change as may be approved by relevant authorities. All floor plans are approximate measurements only and are subject to government re-survey. The balcony shall not be enclosed unless with the approved balcony screen. For an illustration of the approved balcony screen, please refer to the diagram annexed hereto as "Annexure A".



Keyplan is not drawn to scale

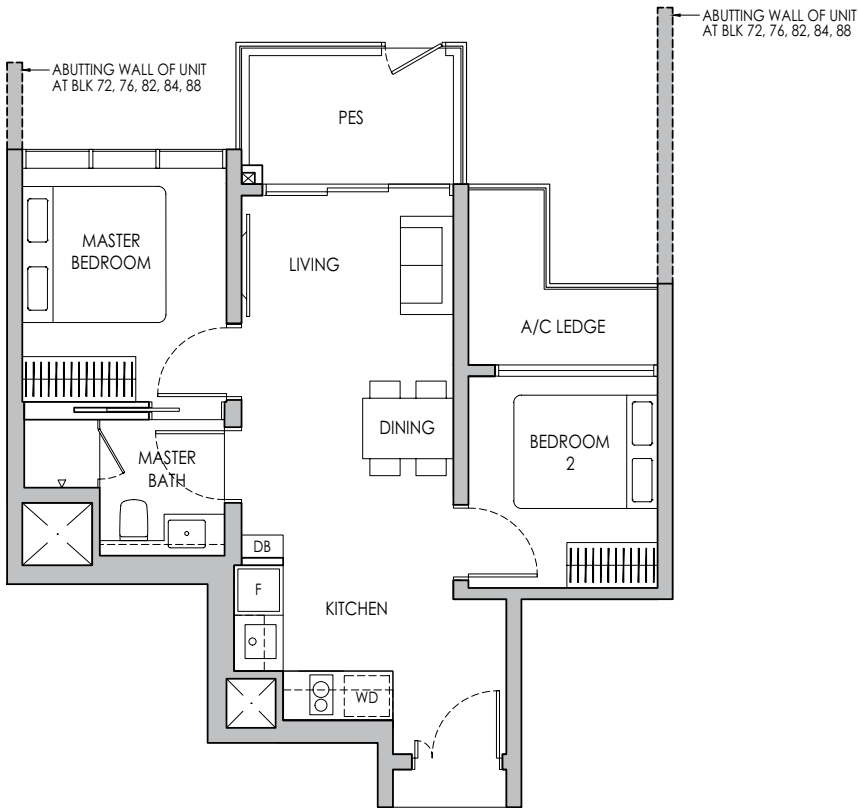


2-BEDROOM

Type B1(p)

58 sq m / 624 sq ft

- BLK 72 #04-01
- BLK 76 #04-24*
- BLK 82 #04-41
- BLK 84 #04-49
- BLK 88 #04-68

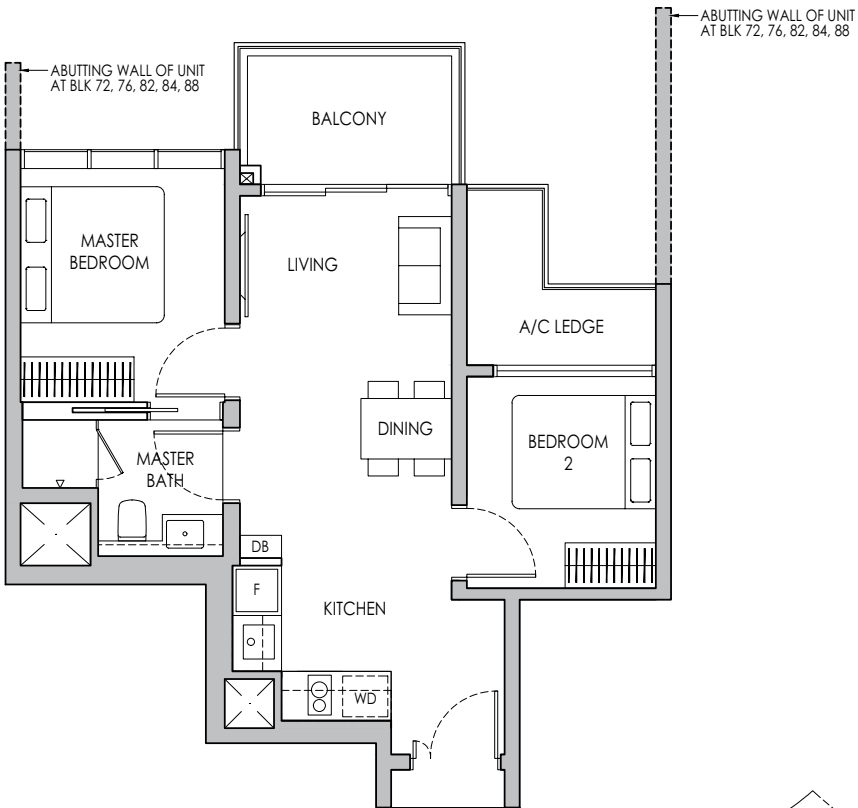


RC LEDGE AT ROOF LEVEL OF BLK 84
RC LEDGE AT ROOF LEVEL OF BLK 82
RC LEDGE AT ROOF LEVEL OF BLK 72, 76, 88

Type B1

58 sq m / 624 sq ft

- BLK 72 #05-01 - #11-01
- BLK 76 #05-24* - #12-24*
- BLK 82 #05-41 - #13-41
- BLK 84 #05-49 - #13-49
- BLK 88 #05-68 - #11-68



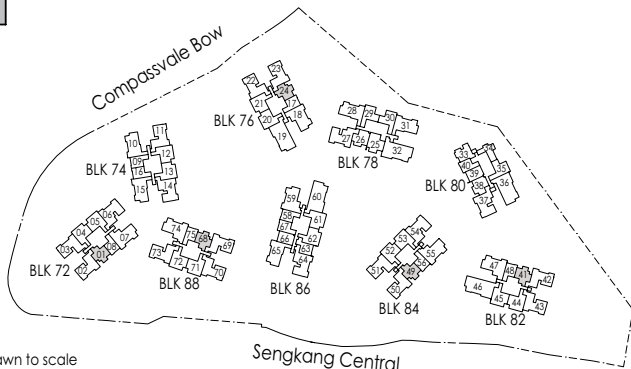
* Mirror Image



Area includes air-con (A/C) ledge, private enclosed space (PES), balcony and strata void area where applicable. Some units are mirror images of the apartment plans shown in the brochure. Please refer to the keyplan for orientation. The plans are subject to change as may be approved by relevant authorities. All floor plans are approximate measurements only and are subject to government re-survey. The balcony shall not be enclosed unless with the approved balcony screen. For an illustration of the approved balcony screen, please refer to the diagram annexed hereto as "Annexure A".



Keyplan is not drawn to scale

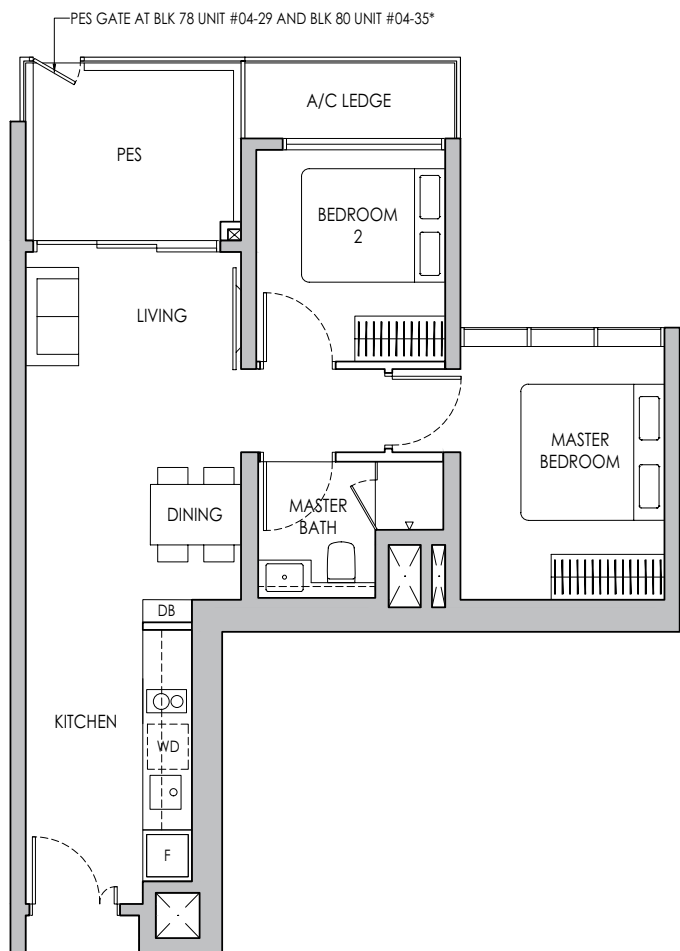
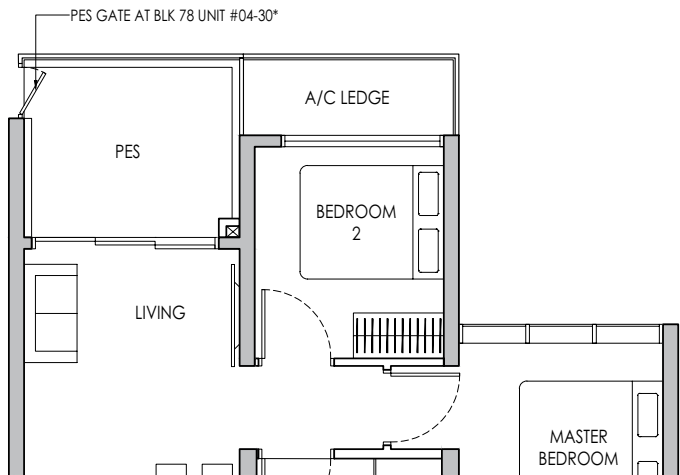


2-BEDROOM

Type B2(p)

63 sq m / 678 sq ft

BLK 78 #04-29 / #04-30*
BLK 80 #04-35*



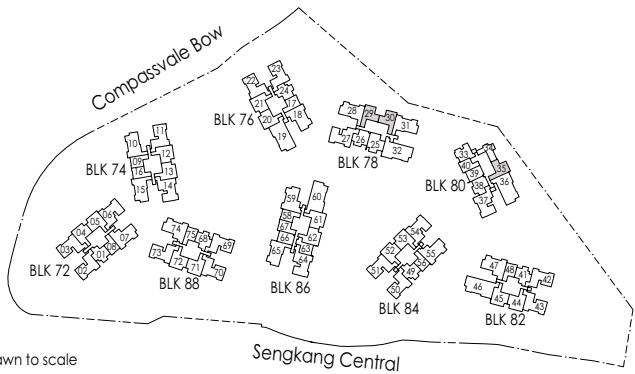
* Mirror Image



Area includes air-con (A/C) ledge, private enclosed space (PES), balcony and strata void area where applicable. Some units are mirror images of the apartment plans shown in the brochure. Please refer to the keyplan for orientation. The plans are subject to change as may be approved by relevant authorities. All floor plans are approximate measurements only and are subject to government re-survey. The balcony shall not be enclosed unless with the approved balcony screen. For an illustration of the approved balcony screen, please refer to the diagram annexed hereto as "Annexure A".



Keyplan is not drawn to scale

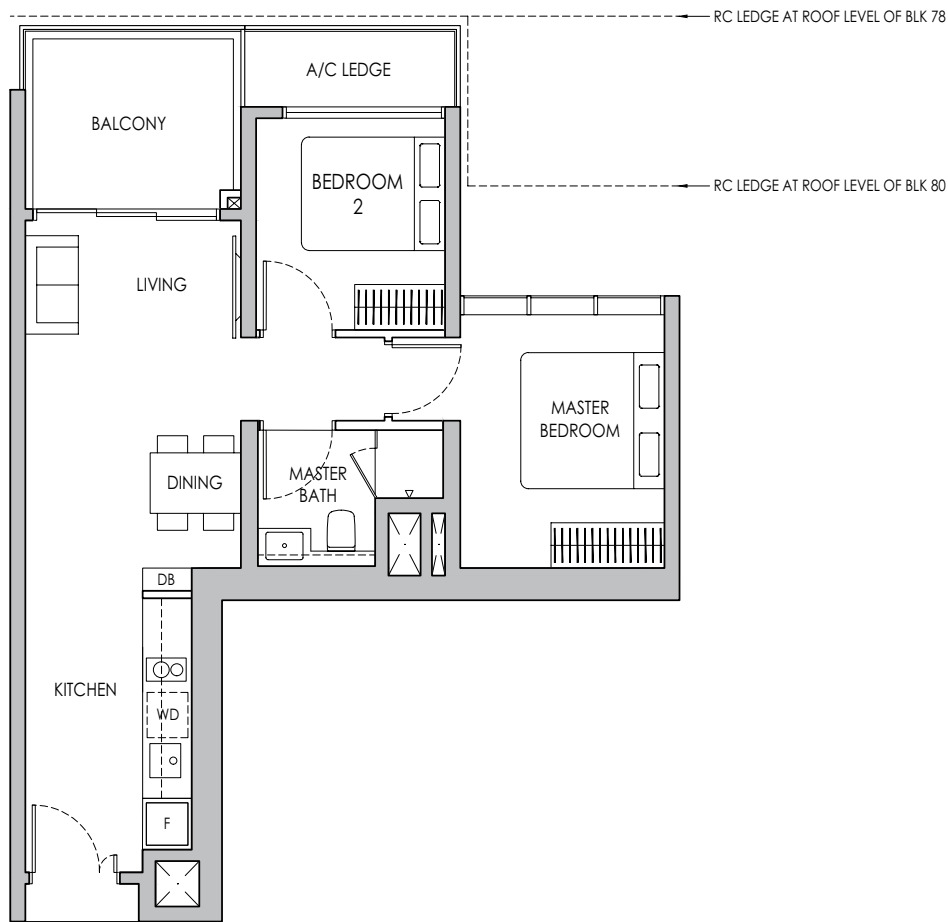


2-BEDROOM

Type B2

63 sq m / 678 sq ft

BLK 78 #05-29 - #13-29, #05-30* - #13-30*
BLK 80 #05-35* - #13-35*



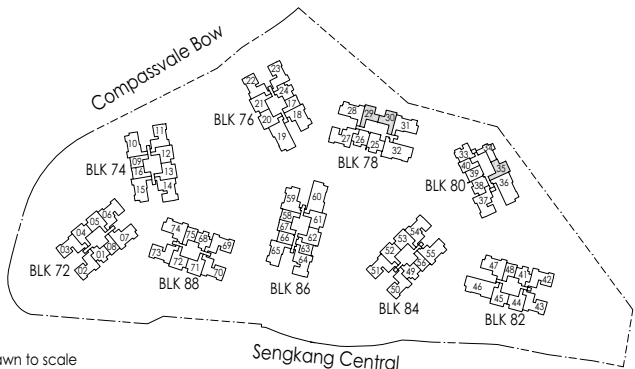
* Mirror Image



Area includes air-con (A/C) ledge, private enclosed space (PES), balcony and strata void area where applicable. Some units are mirror images of the apartment plans shown in the brochure. Please refer to the keyplan for orientation. The plans are subject to change as may be approved by relevant authorities. All floor plans are approximate measurements only and are subject to government re-survey. The balcony shall not be enclosed unless with the approved balcony screen. For an illustration of the approved balcony screen, please refer to the diagram annexed hereto as "Annexure A".



Keyplan is not drawn to scale



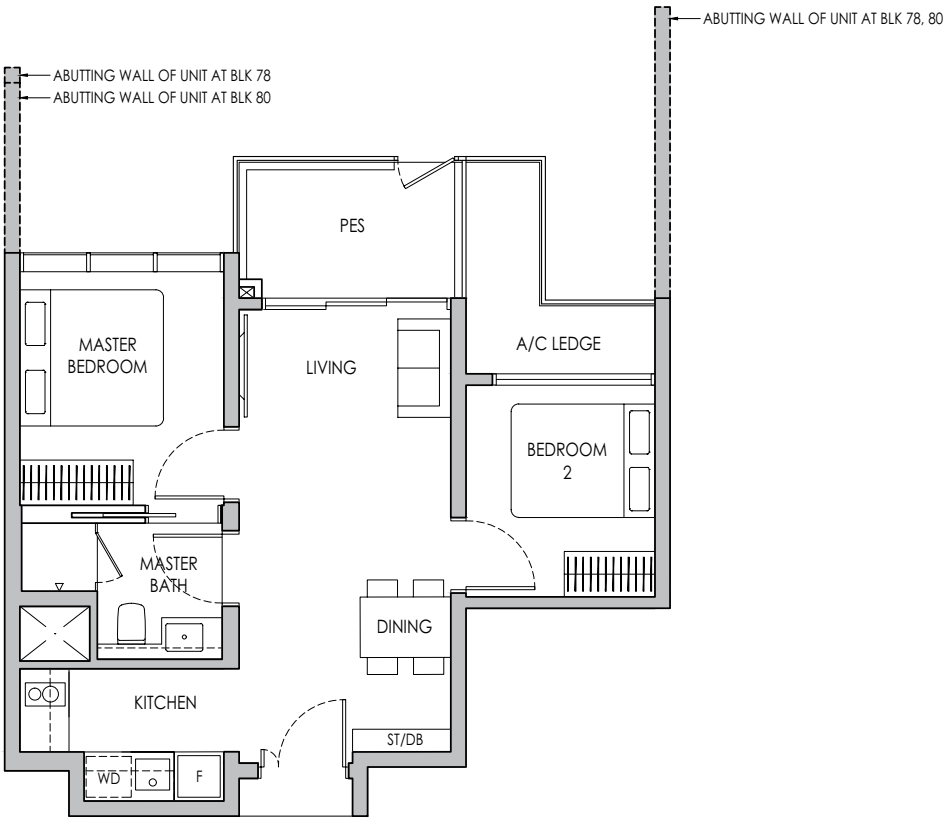
2-BEDROOM

Type B3(p)

58 sq m / 624 sq ft

BLK 78 #04-26

BLK 80 #04-38*

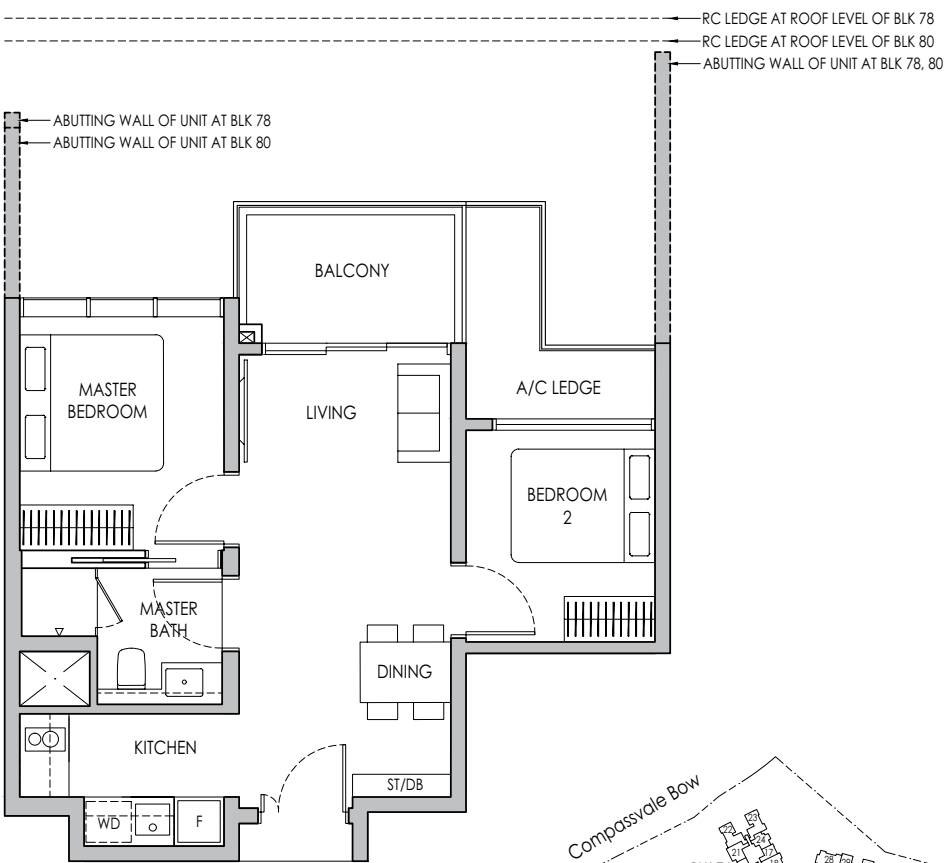


Type B3

58 sq m / 624 sq ft

BLK 78 #05-26 - #13-26

BLK 80 #05-38* - #13-38*



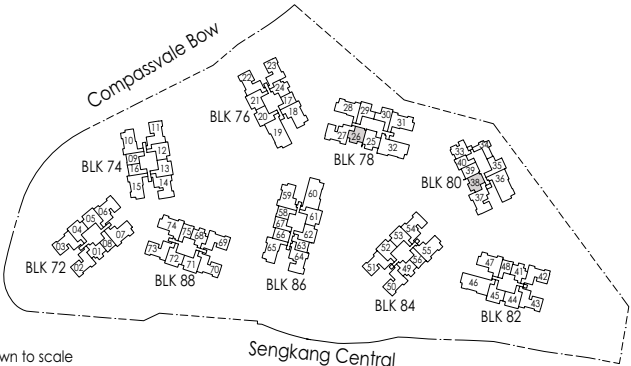
* Mirror Image



Area includes air-con (A/C) ledge, private enclosed space (PES), balcony and strata void area where applicable. Some units are mirror images of the apartment plans shown in the brochure. Please refer to the keyplan for orientation. The plans are subject to change as may be approved by relevant authorities. All floor plans are approximate measurements only and are subject to government re-survey. The balcony shall not be enclosed unless with the approved balcony screen. For an illustration of the approved balcony screen, please refer to the diagram annexed hereto as "Annexure A".



Keyplan is not drawn to scale

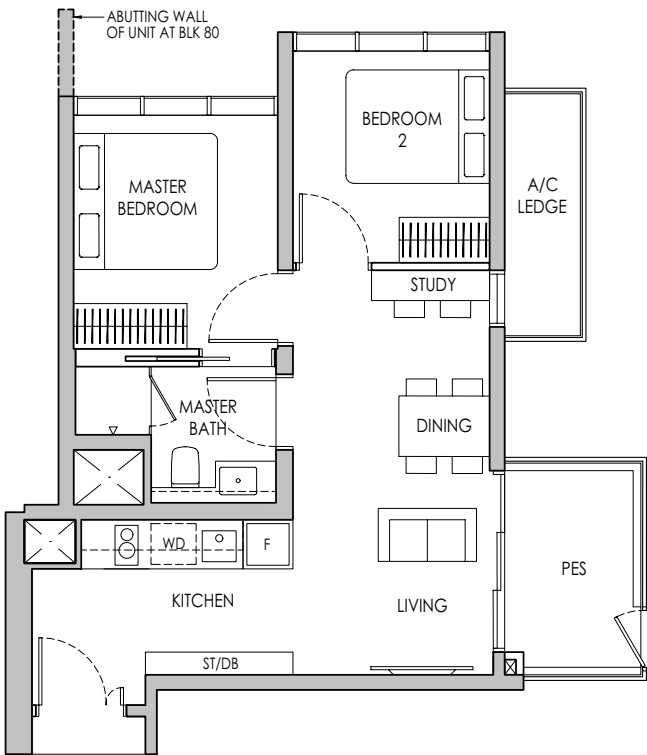


2-BEDROOM + STUDY

Type B4S(p)

58 sq m / 624 sq ft

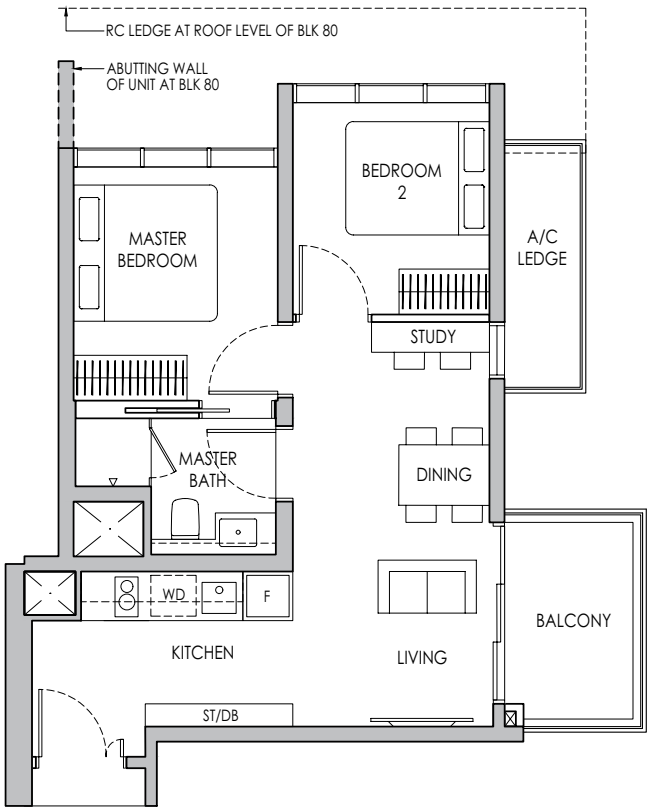
BLK 80 #04-33



Type B4S

58 sq m / 624 sq ft

BLK 80 #05-33 - #13-33



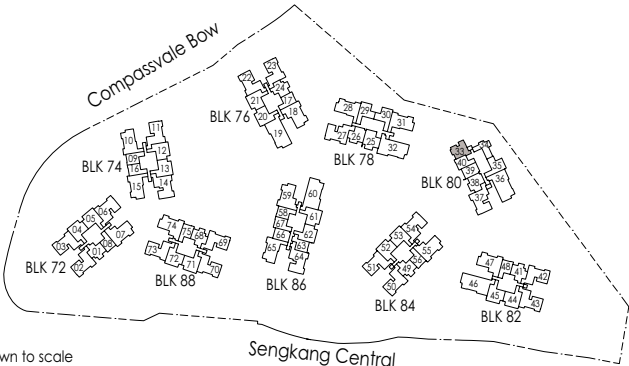
* Mirror Image



Area includes air-con (A/C) ledge, private enclosed space (PES), balcony and strata void area where applicable. Some units are mirror images of the apartment plans shown in the brochure. Please refer to the keyplan for orientation. The plans are subject to change as may be approved by relevant authorities. All floor plans are approximate measurements only and are subject to government re-survey. The balcony shall not be enclosed unless with the approved balcony screen. For an illustration of the approved balcony screen, please refer to the diagram annexed hereto as "Annexure A".



Keyplan is not drawn to scale

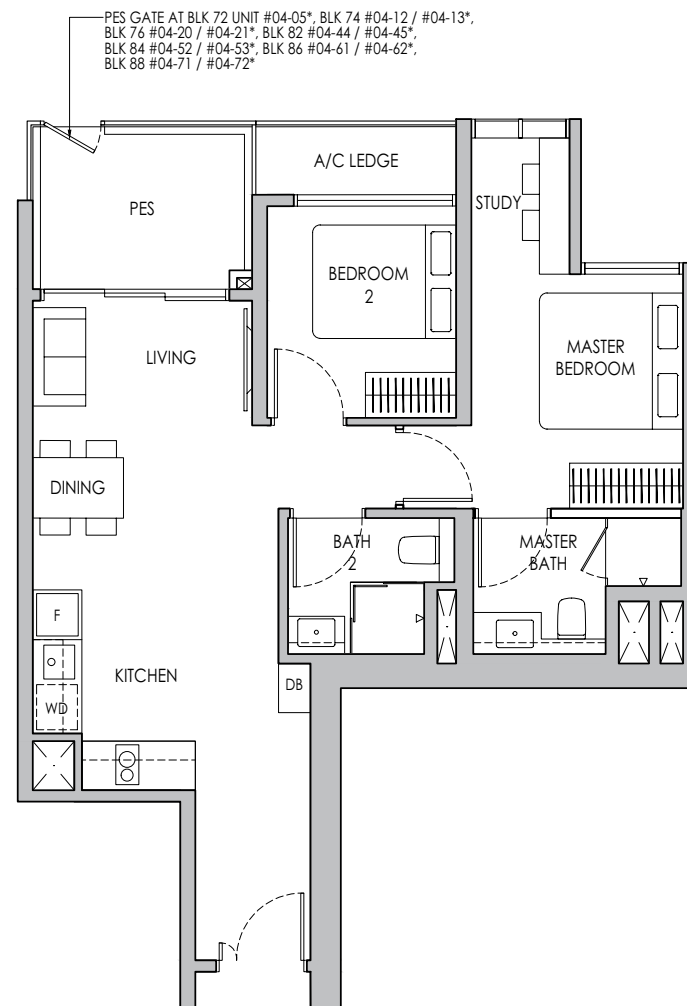
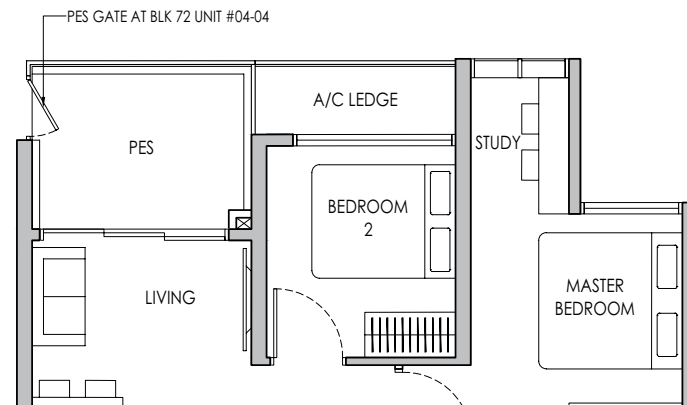


2-BEDROOM PREMIUM + STUDY

Type B5PS(p)

71 sq m / 764 sq ft

BLK 72 #04-04, #04-05*
BLK 74 #04-12, #04-13*
BLK 76 #04-20, #04-21*
BLK 82 #04-44, #04-45*
BLK 84 #04-52, #04-53*
BLK 86 #04-61, #04-62*
BLK 88 #04-71, #04-72*



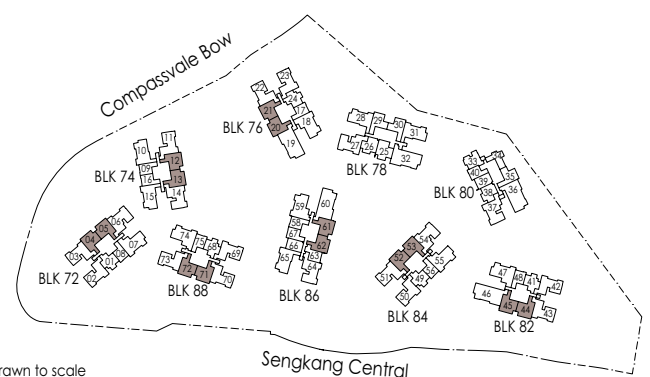
* Mirror Image



Area includes air-con (A/C) ledge, private enclosed space (PES), balcony and strata void area where applicable. Some units are mirror images of the apartment plans shown in the brochure. Please refer to the keyplan for orientation. The plans are subject to change as may be approved by relevant authorities. All floor plans are approximate measurements only and are subject to government re-survey. The balcony shall not be enclosed unless with the approved balcony screen. For an illustration of the approved balcony screen, please refer to the diagram annexed hereto as "Annexure A".



Keyplan is not drawn to scale

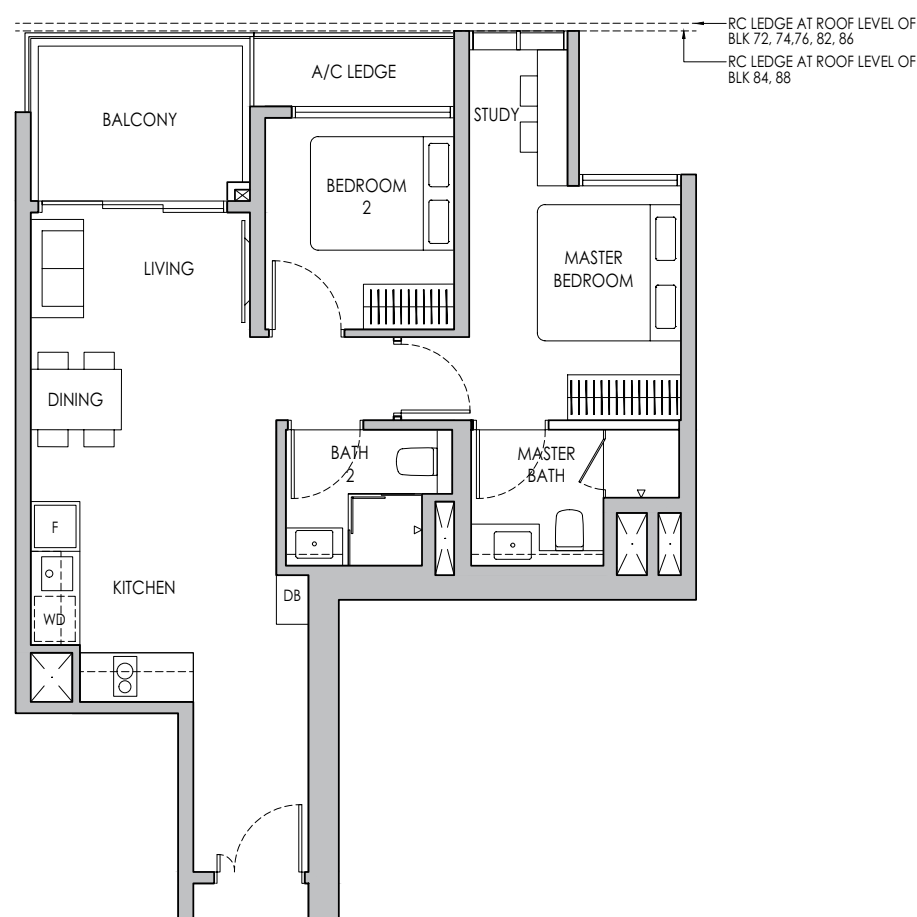


2-BEDROOM PREMIUM + STUDY

Type B5PS

71 sq m / 764 sq ft

BLK 72 #05-04 - #11-04, #05-05* - #11-05*
 BLK 74 #05-12 - #11-12, #05-13* - #11-13*
 BLK 76 #05-20 - #12-20, #05-21* - #12-21*
 BLK 82 #05-44 - #13-44, #05-45* - #13-45*
 BLK 84 #05-52 - #13-52, #05-53* - #13-53*
 BLK 86 #05-61 - #13-61, #05-62* - #13-62*
 BLK 88 #05-71 - #11-71, #05-72* - #11-72*



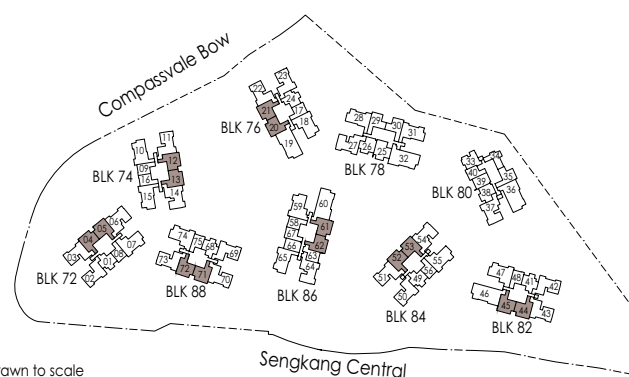
* Mirror Image

0 1 2 5m

Area includes air-con (A/C) ledge, private enclosed space (PES), balcony and strata void area where applicable. Some units are mirror images of the apartment plans shown in the brochure. Please refer to the keyplan for orientation. The plans are subject to change as may be approved by relevant authorities. All floor plans are approximate measurements only and are subject to government re-survey. The balcony shall not be enclosed unless with the approved balcony screen. For an illustration of the approved balcony screen, please refer to the diagram annexed hereto as "Annexure A".



Keyplan is not drawn to scale

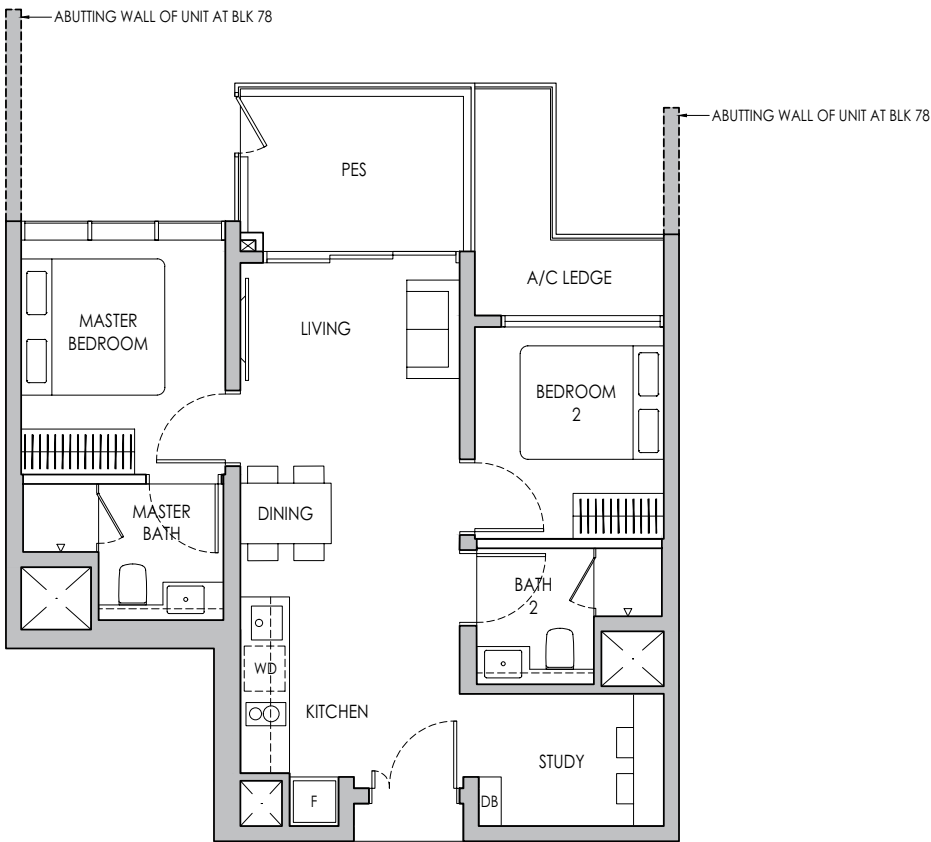


2-BEDROOM PREMIUM + STUDY

Type B6PS(p)

68 sq m / 732 sq ft

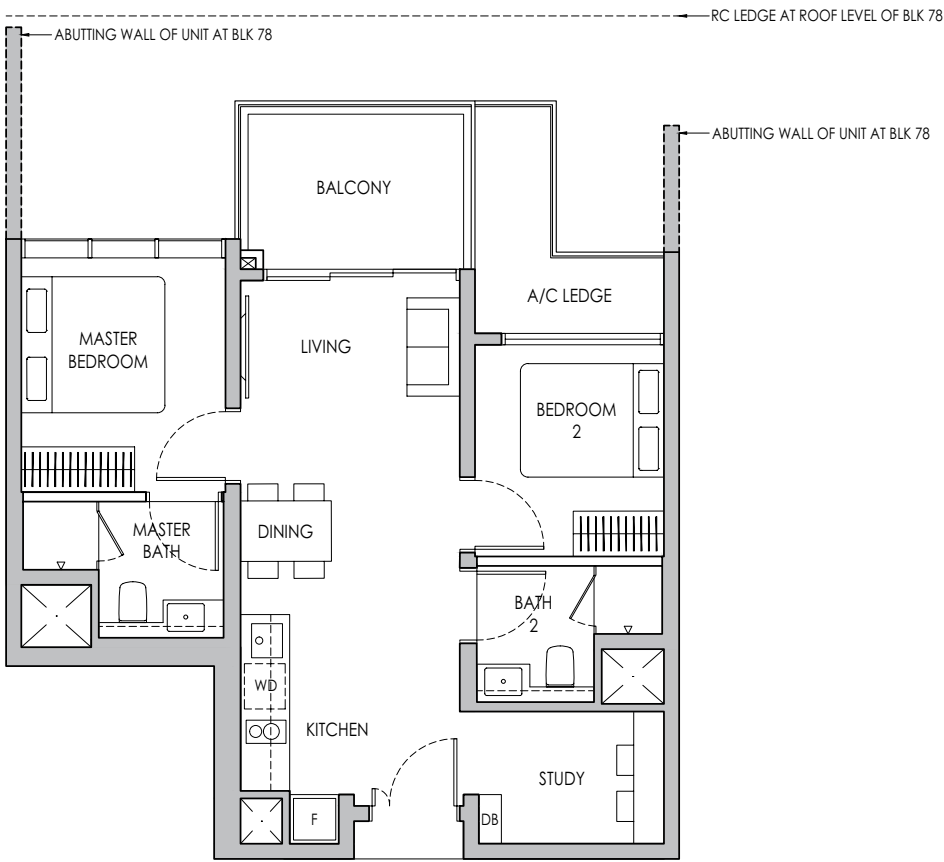
BLK 78 #04-25



Type B6PS

68 sq m / 732 sq ft

BLK 78 #05-25 - #13-25



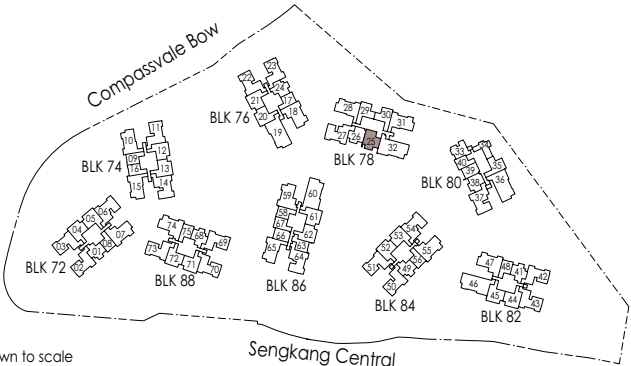
* Mirror Image



Area includes air-con (A/C) ledge, private enclosed space (PES), balcony and strata void area where applicable. Some units are mirror images of the apartment plans shown in the brochure. Please refer to the keyplan for orientation. The plans are subject to change as may be approved by relevant authorities. All floor plans are approximate measurements only and are subject to government re-survey. The balcony shall not be enclosed unless with the approved balcony screen. For an illustration of the approved balcony screen, please refer to the diagram annexed hereto as "Annexure A".



Keyplan is not drawn to scale

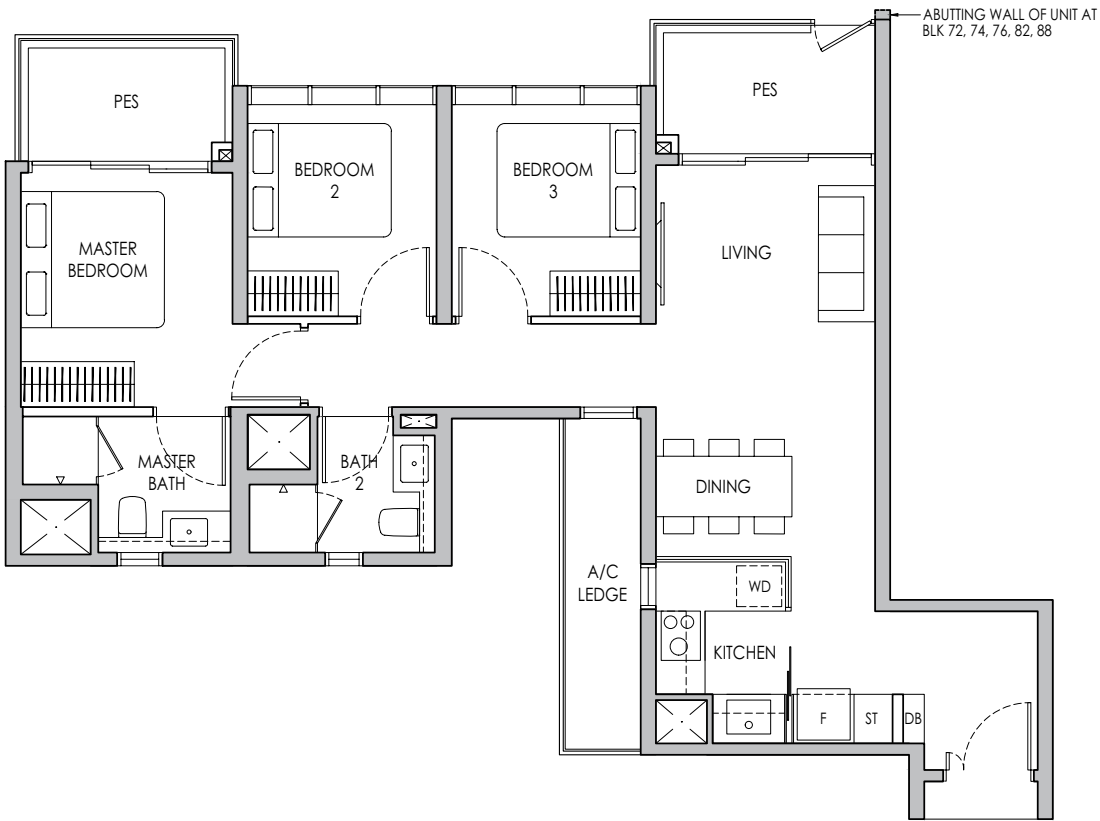


3-BEDROOM

Type C1(p)

87 sq m / 936 sq ft

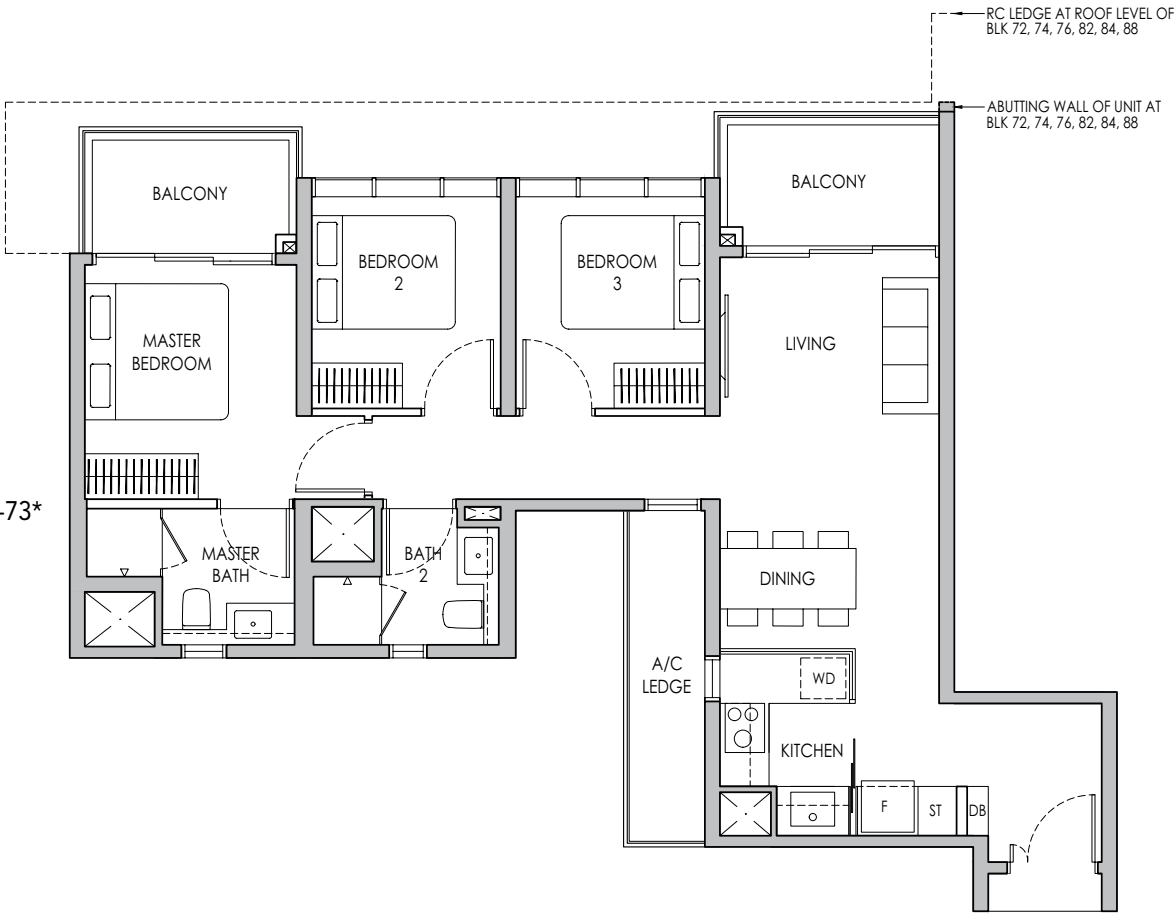
- BLK 72 #04-03
- BLK 74 #04-11
- BLK 76 #04-22*
- BLK 82 #04-43
- BLK 88 #04-70, #04-73*



Type C1

87 sq m / 936 sq ft

- BLK 72 #05-03 - #11-03
- BLK 74 #05-11 - #11-11
- BLK 76 #05-22* - #12-22*
- BLK 82 #05-43 - #13-43
- BLK 84 #06-51 - #13-51
- BLK 88 #05-70 - #11-70, #05-73* - #11-73*



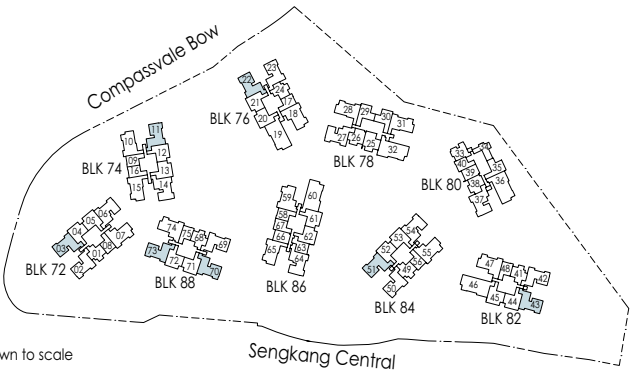
* Mirror Image



Area includes air-con (A/C) ledge, private enclosed space (PES), balcony and strata void area where applicable. Some units are mirror images of the apartment plans shown in the brochure. Please refer to the keyplan for orientation. The plans are subject to change as may be approved by relevant authorities. All floor plans are approximate measurements only and are subject to government re-survey. The balcony shall not be enclosed unless with the approved balcony screen. For an illustration of the approved balcony screen, please refer to the diagram annexed hereto as "Annexure A".



Keyplan is not drawn to scale

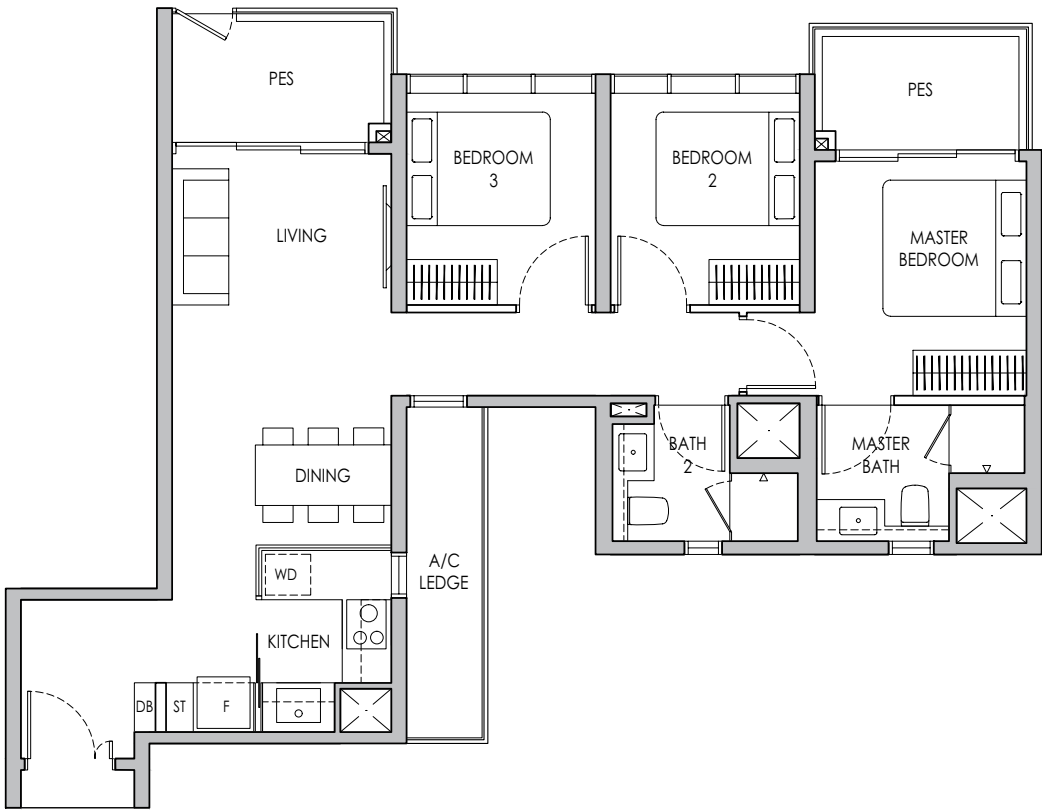


3-BEDROOM

Type C1a(p)

87 sq m / 936 sq ft

- BLK 72 #04-02
- BLK 76 #04-23*
- BLK 82 #04-42
- BLK 84 #04-50
- BLK 88 #04-69

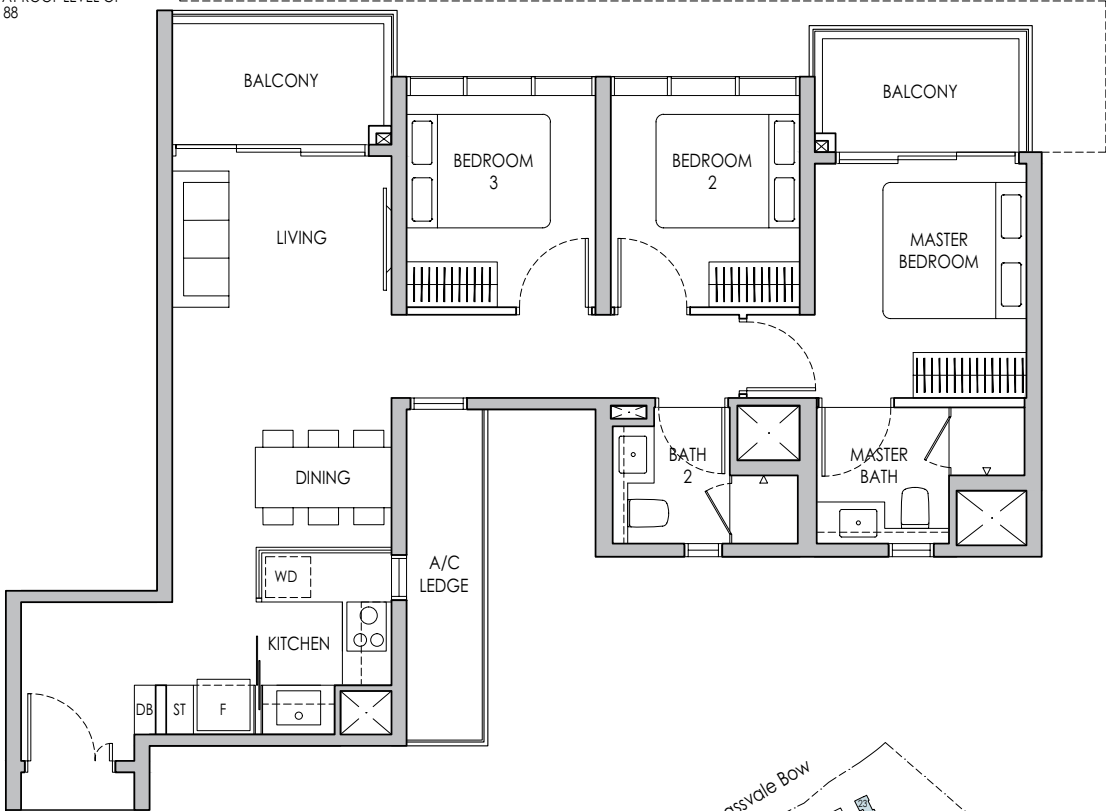


Type C1a

87 sq m / 936 sq ft

- BLK 72 #05-02 - #11-02
- BLK 76 #05-23* - #12-23*
- BLK 82 #05-42 - #13-42
- BLK 84 #05-50 - #13-50
- BLK 88 #05-69 - #11-69

RC LEDGE AT ROOF LEVEL OF
BLK 84
RC LEDGE AT ROOF LEVEL OF
BLK 82
RC LEDGE AT ROOF LEVEL OF
BLK 72, 76, 88



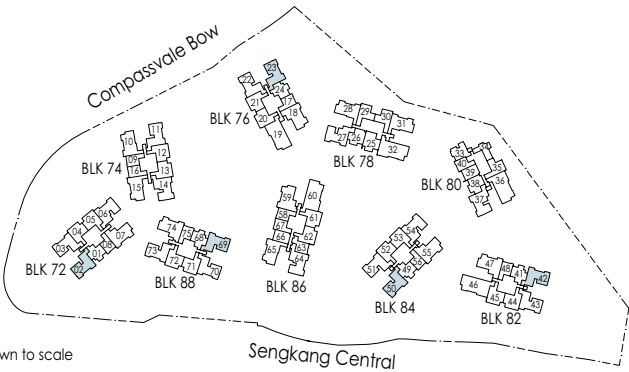
* Mirror Image



Area includes air-con (A/C) ledge, private enclosed space (PES), balcony and strata void area where applicable. Some units are mirror images of the apartment plans shown in the brochure. Please refer to the keyplan for orientation. The plans are subject to change as may be approved by relevant authorities. All floor plans are approximate measurements only and are subject to government re-survey. The balcony shall not be enclosed unless with the approved balcony screen. For an illustration of the approved balcony screen, please refer to the diagram annexed hereto as "Annexure A".



Keyplan is not drawn to scale

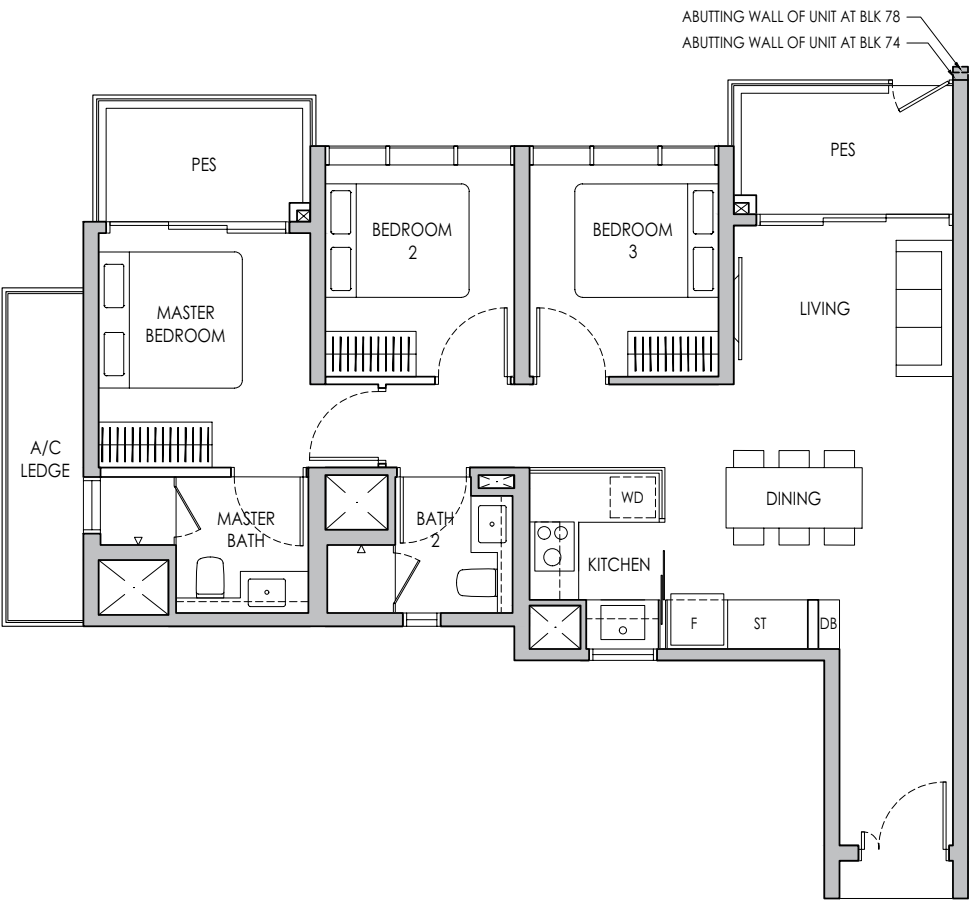


3-BEDROOM

Type C2(p)

87 sq m / 936 sq ft

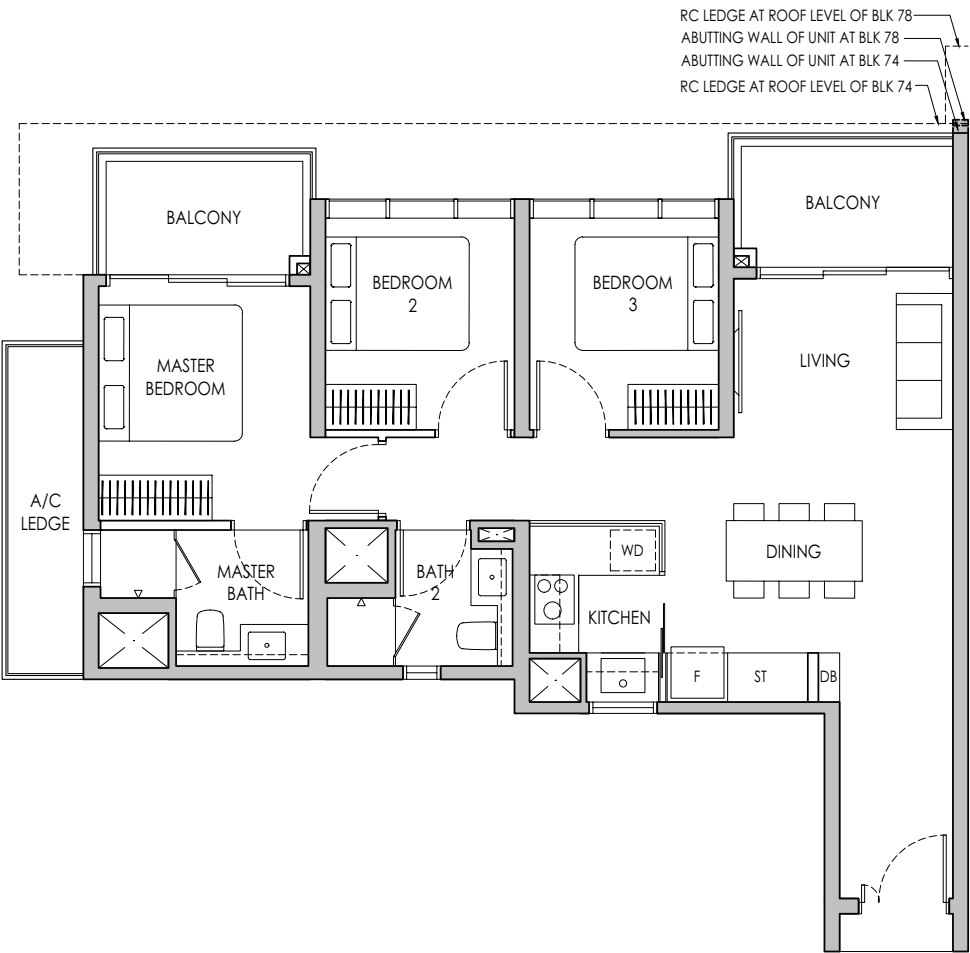
BLK 74 #04-10*, #04-15
BLK 78 #04-28, #04-31*



Type C2

87 sq m / 936 sq ft

BLK 74 #05-10* - #11-10*, #05-15 - #11-15
BLK 78 #05-28 - #13-28, #05-31* - #13-31*



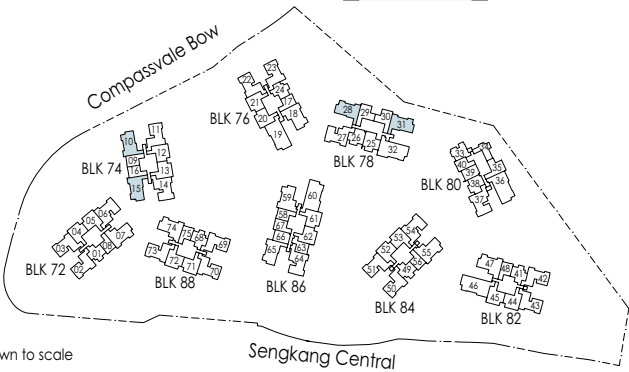
* Mirror Image



Area includes air-con (A/C) ledge, private enclosed space (PES), balcony and strata void area where applicable. Some units are mirror images of the apartment plans shown in the brochure. Please refer to the keyplan for orientation. The plans are subject to change as may be approved by relevant authorities. All floor plans are approximate measurements only and are subject to government re-survey. The balcony shall not be enclosed unless with the approved balcony screen. For an illustration of the approved balcony screen, please refer to the diagram annexed hereto as "Annexure A".



Keyplan is not drawn to scale

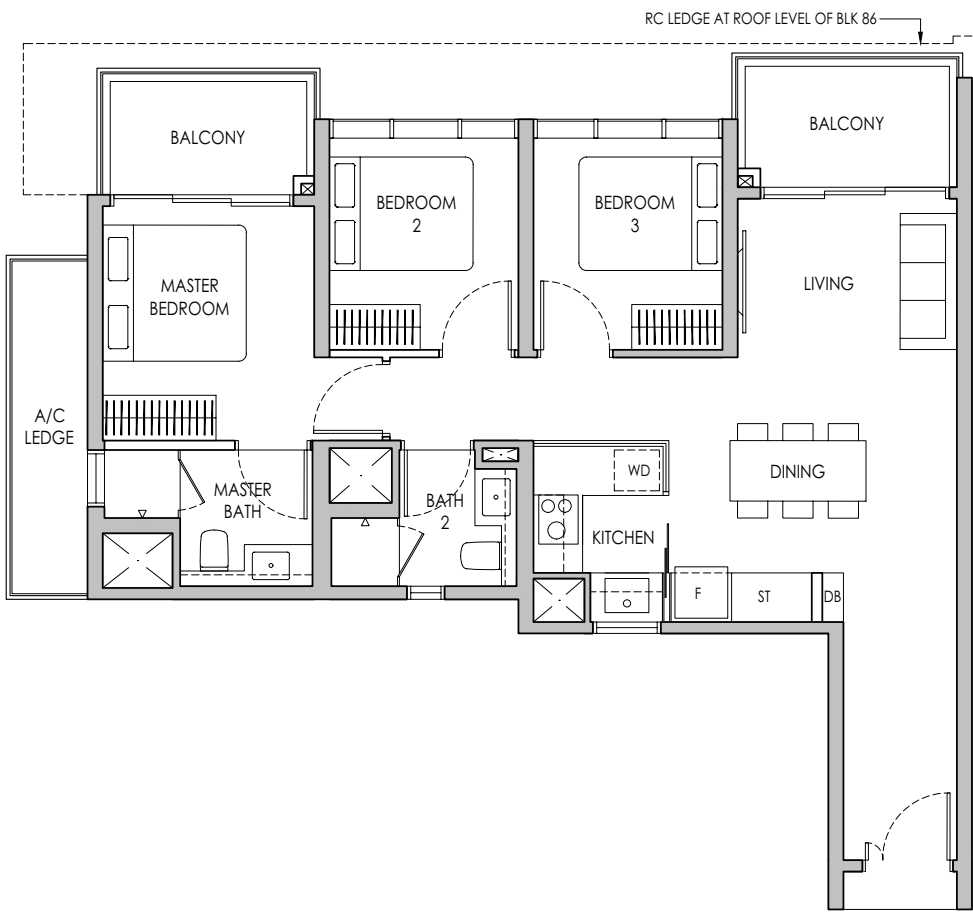


3-BEDROOM

Type C2a

88 sq m / 947 sq ft

BLK 86 #06-65 - #13-65



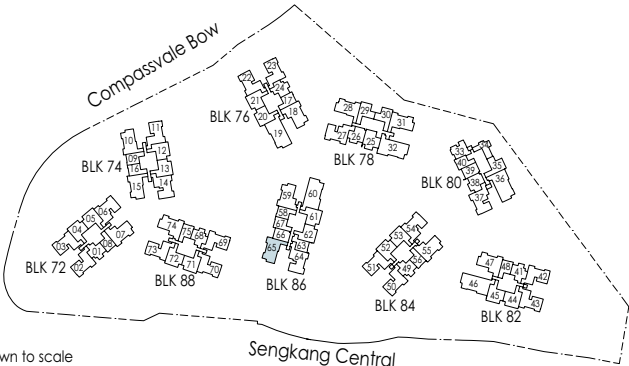
* Mirror Image



Area includes air-con (A/C) ledge, private enclosed space (PES), balcony and strata void area where applicable. Some units are mirror images of the apartment plans shown in the brochure. Please refer to the keyplan for orientation. The plans are subject to change as may be approved by relevant authorities. All floor plans are approximate measurements only and are subject to government re-survey. The balcony shall not be enclosed unless with the approved balcony screen. For an illustration of the approved balcony screen, please refer to the diagram annexed hereto as "Annexure A".



Keyplan is not drawn to scale

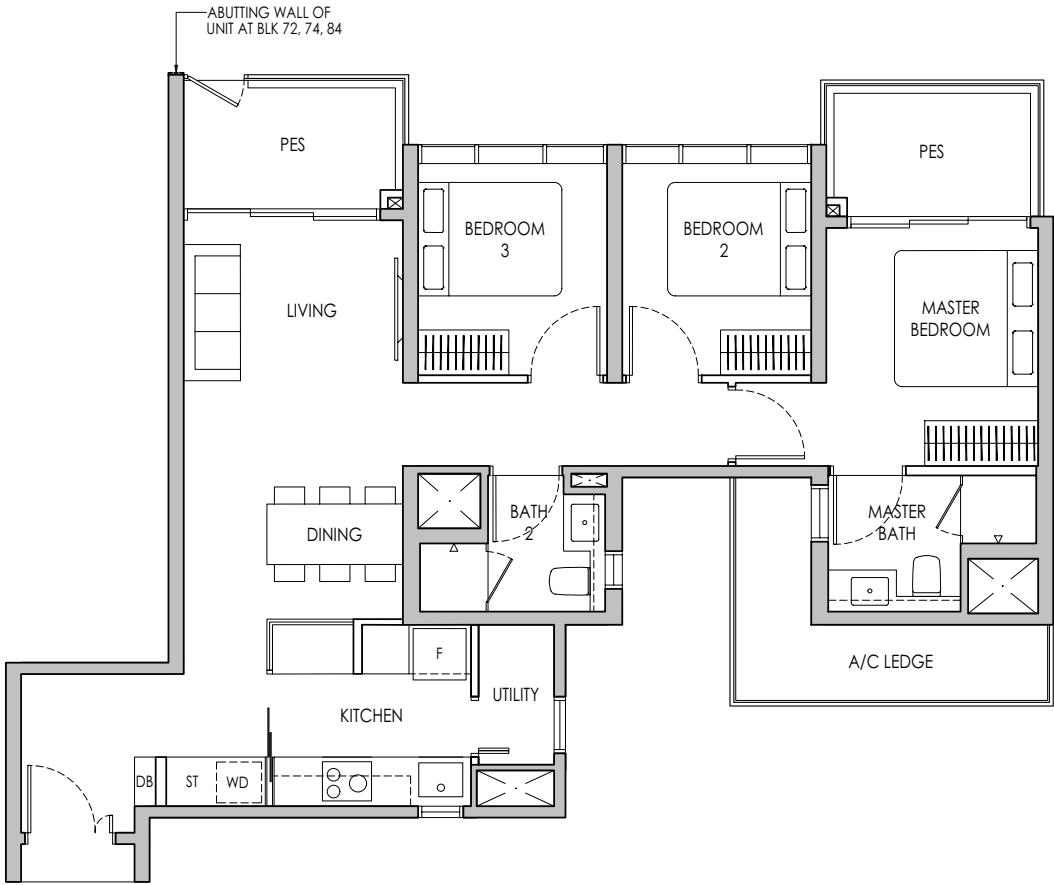


3-BEDROOM PREMIUM

Type C3P(p)

95 sq m / 1023 sq ft

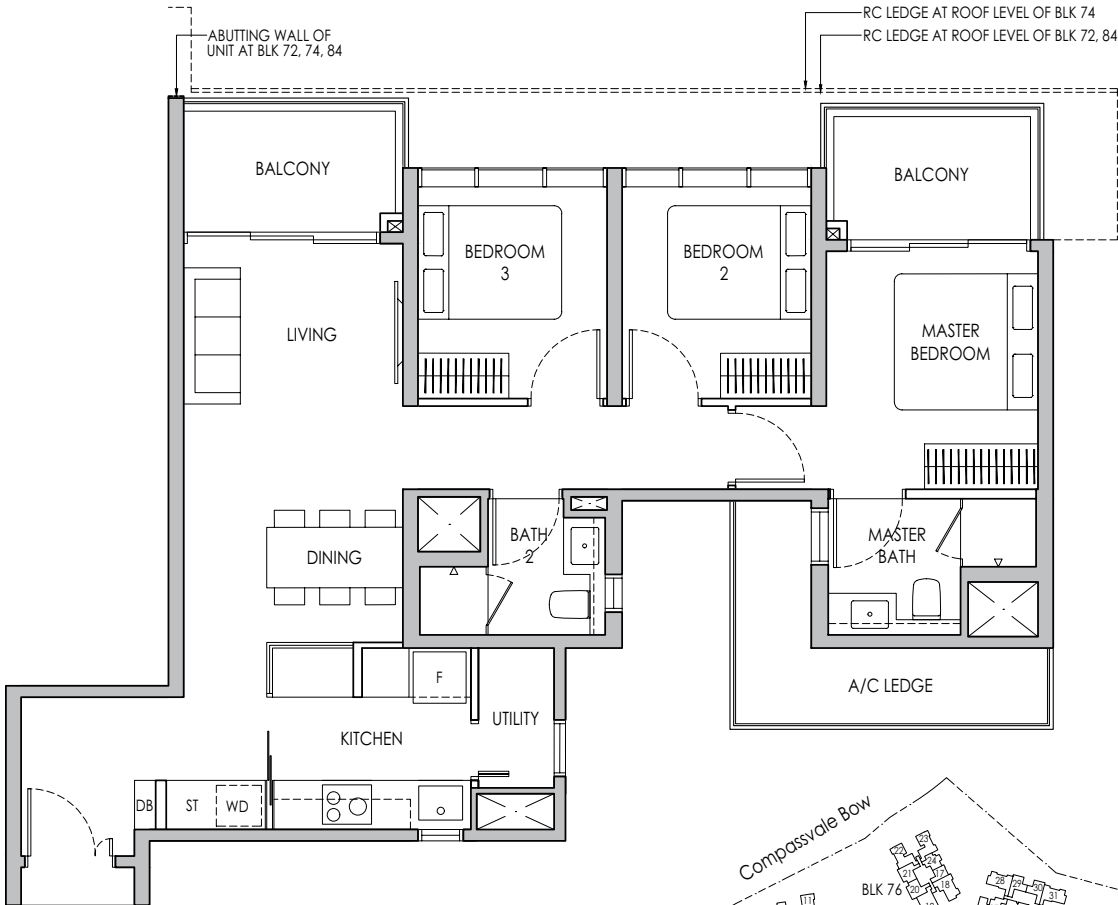
- BLK 72 #04-06
- BLK 74 #04-14
- BLK 84 #04-54



Type C3P

95 sq m / 1023 sq ft

- BLK 72 #05-06 - #11-06
- BLK 74 #05-14 - #11-14
- BLK 84 #05-54 - #13-54



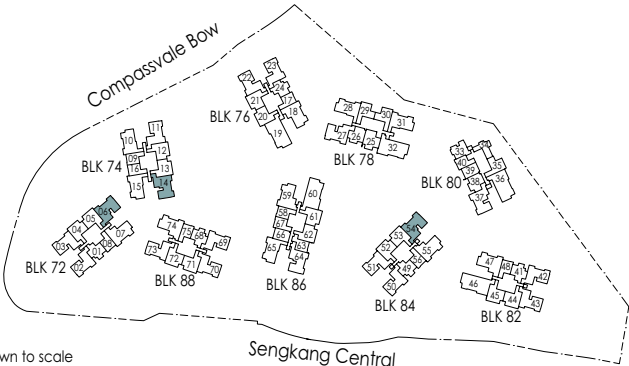
* Mirror Image



Area includes air-con (A/C) ledge, private enclosed space (PES), balcony and strata void area where applicable. Some units are mirror images of the apartment plans shown in the brochure. Please refer to the keyplan for orientation. The plans are subject to change as may be approved by relevant authorities. All floor plans are approximate measurements only and are subject to government re-survey. The balcony shall not be enclosed unless with the approved balcony screen. For an illustration of the approved balcony screen, please refer to the diagram annexed hereto as "Annexure A".



Keyplan is not drawn to scale



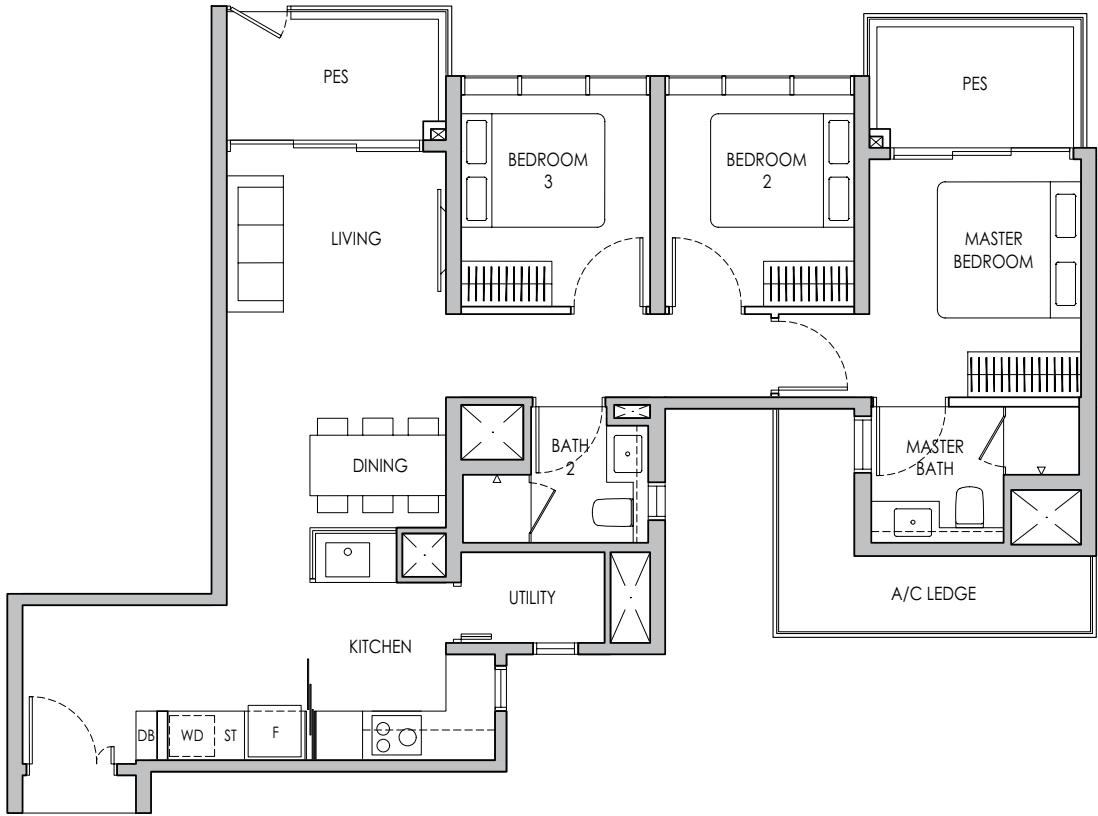
3-BEDROOM PREMIUM

Type C3Pa(p)

96 sq m / 1033 sq ft

BLK 78 #04-27

BLK 80 #04-37*

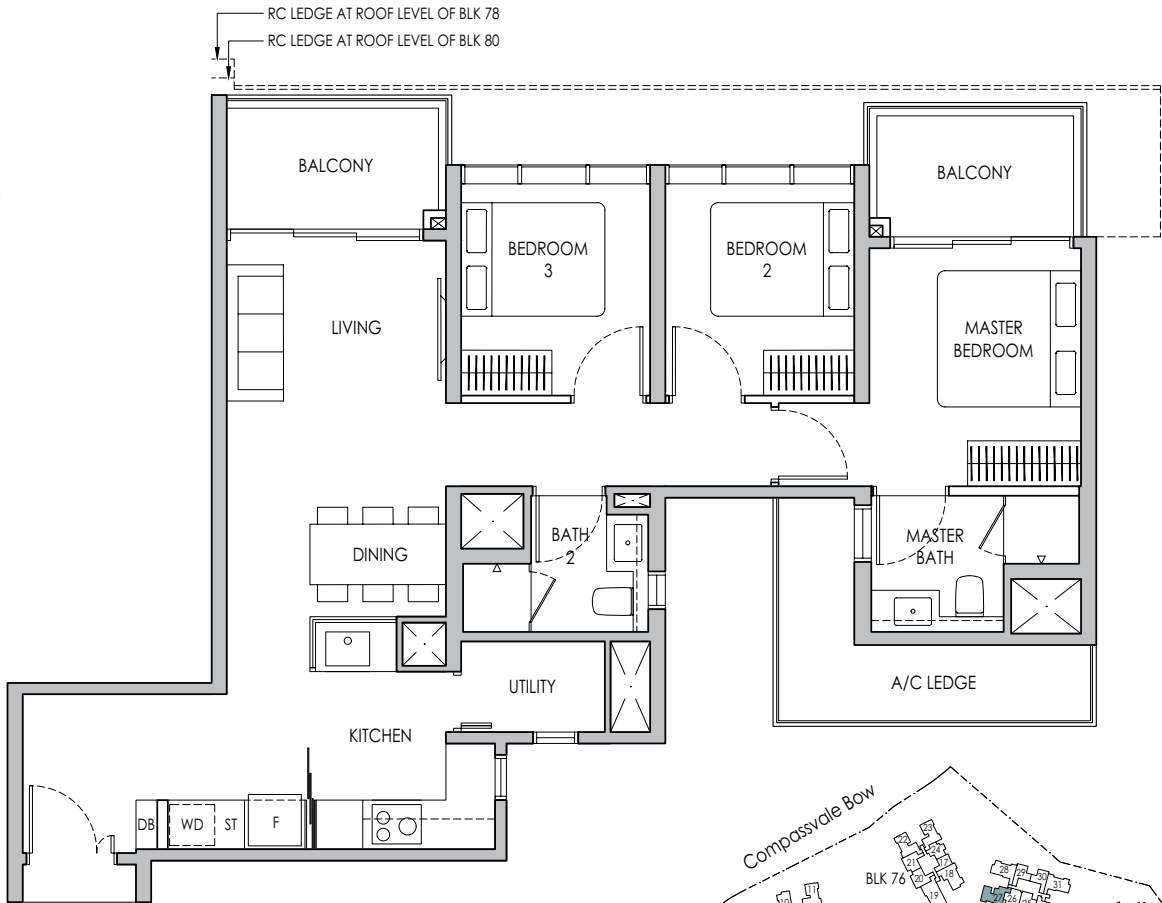


Type C3Pa

96 sq m / 1033 sq ft

BLK 78 #05-27 - #13-27

BLK 80 #05-37* - #13-37*



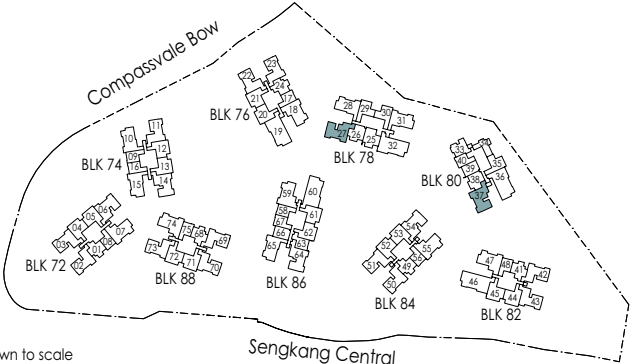
* Mirror Image



Area includes air-con (A/C) ledge, private enclosed space (PES), balcony and strata void area where applicable. Some units are mirror images of the apartment plans shown in the brochure. Please refer to the keyplan for orientation. The plans are subject to change as may be approved by relevant authorities. All floor plans are approximate measurements only and are subject to government re-survey. The balcony shall not be enclosed unless with the approved balcony screen. For an illustration of the approved balcony screen, please refer to the diagram annexed hereto as "Annexure A".



Keyplan is not drawn to scale

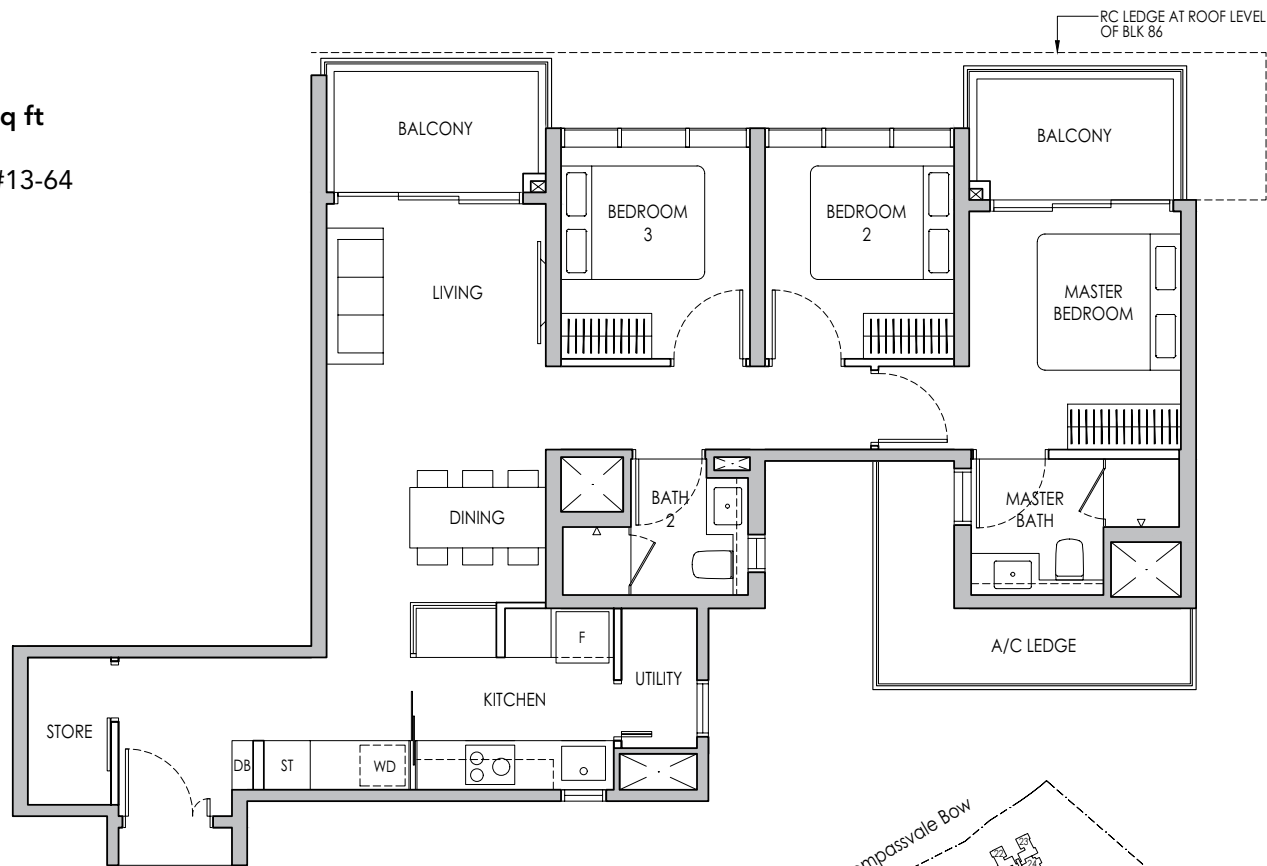


3-BEDROOM PREMIUM

Type C4P(p)
98 sq m / 1055 sq ft
BLK 86 #04-64



Type C4P
98 sq m / 1055 sq ft
BLK 86 #05-64 - #13-64



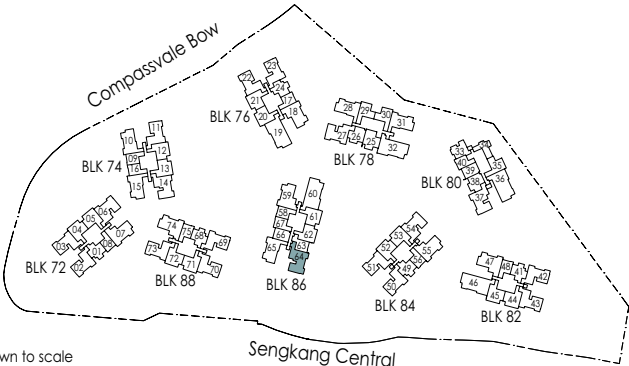
* Mirror Image



Area includes air-con (A/C) ledge, private enclosed space (PES), balcony and strata void area where applicable. Some units are mirror images of the apartment plans shown in the brochure. Please refer to the keyplan for orientation. The plans are subject to change as may be approved by relevant authorities. All floor plans are approximate measurements only and are subject to government re-survey. The balcony shall not be enclosed unless with the approved balcony screen. For an illustration of the approved balcony screen, please refer to the diagram annexed hereto as "Annexure A".



Keyplan is not drawn to scale

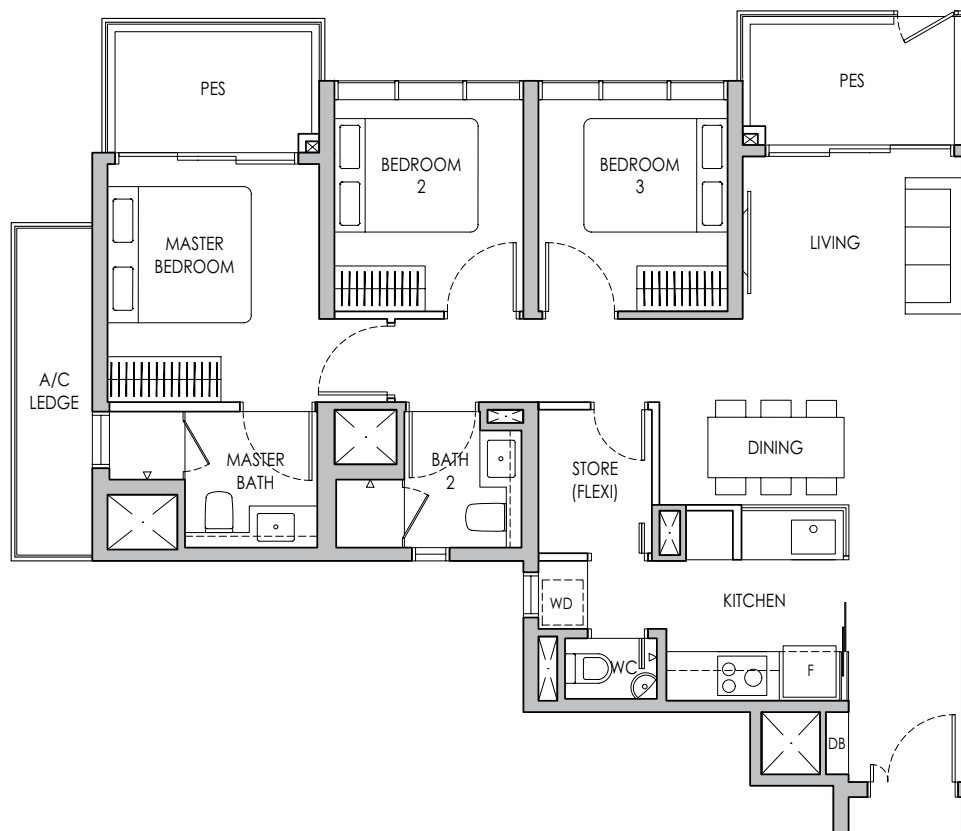


3-BEDROOM PREMIUM + FLEXI

Type C5PF(p)

94 sq m / 1012 sq ft

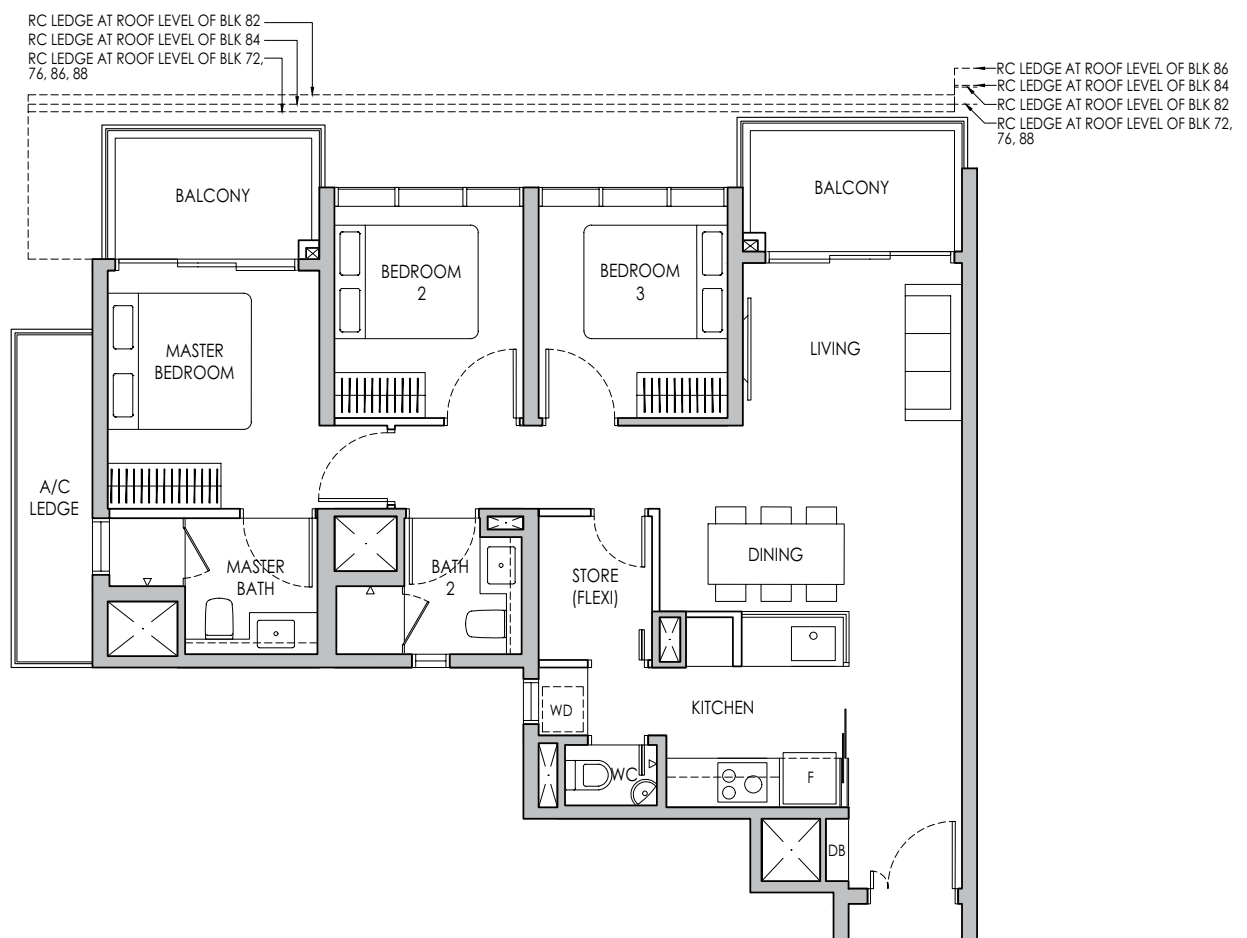
BLK 72 #04-07
BLK 76 #04-18*
BLK 82 #04-47
BLK 84 #04-55
BLK 86 #04-59*
BLK 88 #04-74



Type C5PF

94 sq m / 1012 sq ft

BLK 72 #05-07 - #11-07
BLK 76 #05-18* - #12-18*
BLK 82 #05-47 - #13-47
BLK 84 #05-55 - #13-55
BLK 86 #05-59* - #13-59*
BLK 88 #05-74 - #11-74



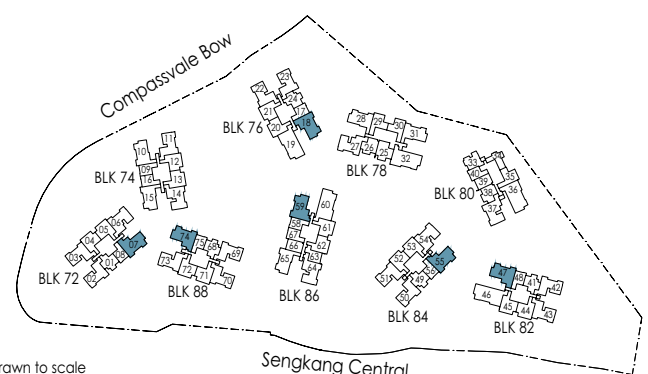
* Mirror Image



Area includes air-con (A/C) ledge, private enclosed space (PES), balcony and strata void area where applicable. Some units are mirror images of the apartment plans shown in the brochure. Please refer to the keyplan for orientation. The plans are subject to change as may be approved by relevant authorities. All floor plans are approximate measurements only and are subject to government re-survey. The balcony shall not be enclosed unless with the approved balcony screen. For an illustration of the approved balcony screen, please refer to the diagram annexed hereto as "Annexure A".



Keyplan is not drawn to scale



4-BEDROOM PREMIUM + FLEXI

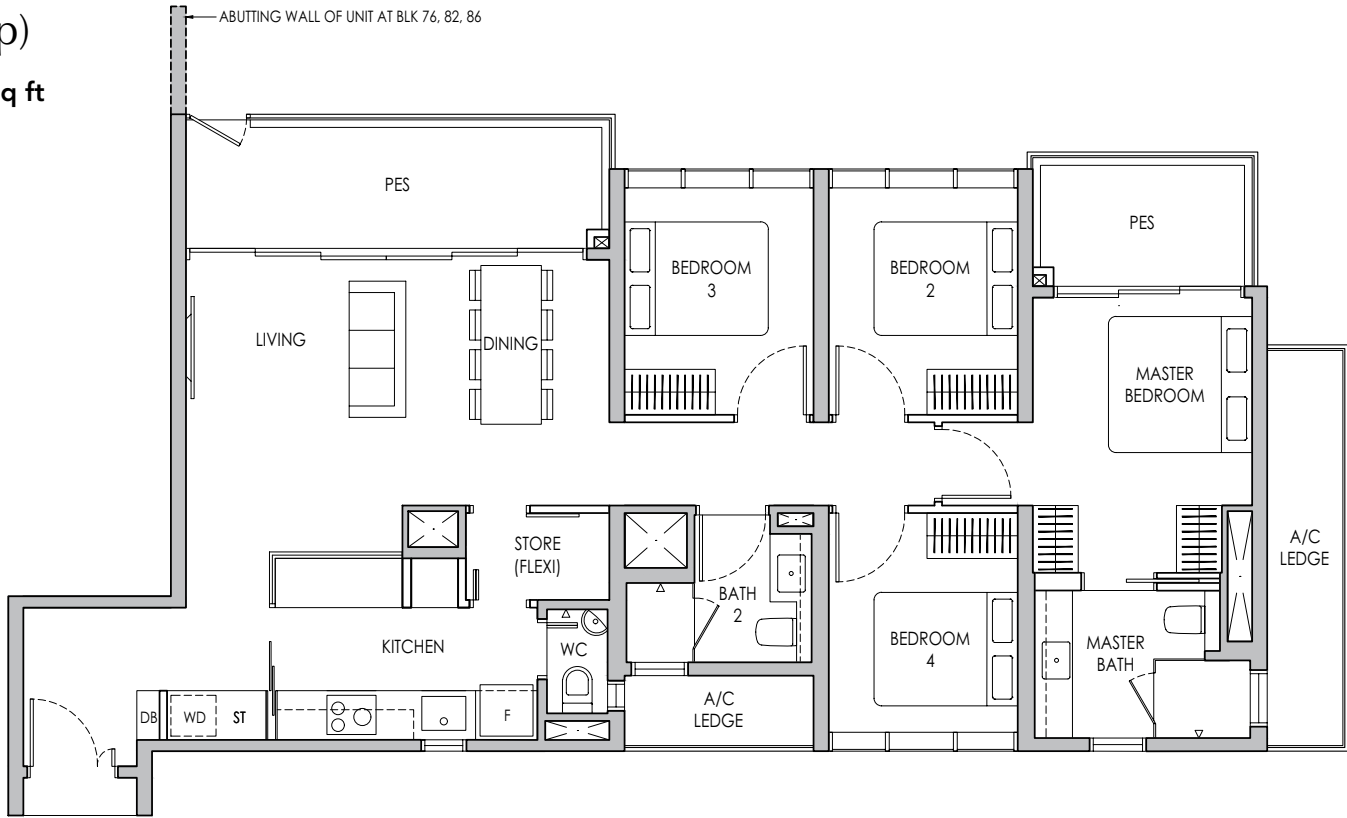
Type D1PF(p)

123 sq m / 1324 sq ft

BLK 76 #04-19*

BLK 82 #04-46

BLK 86 #04-60*



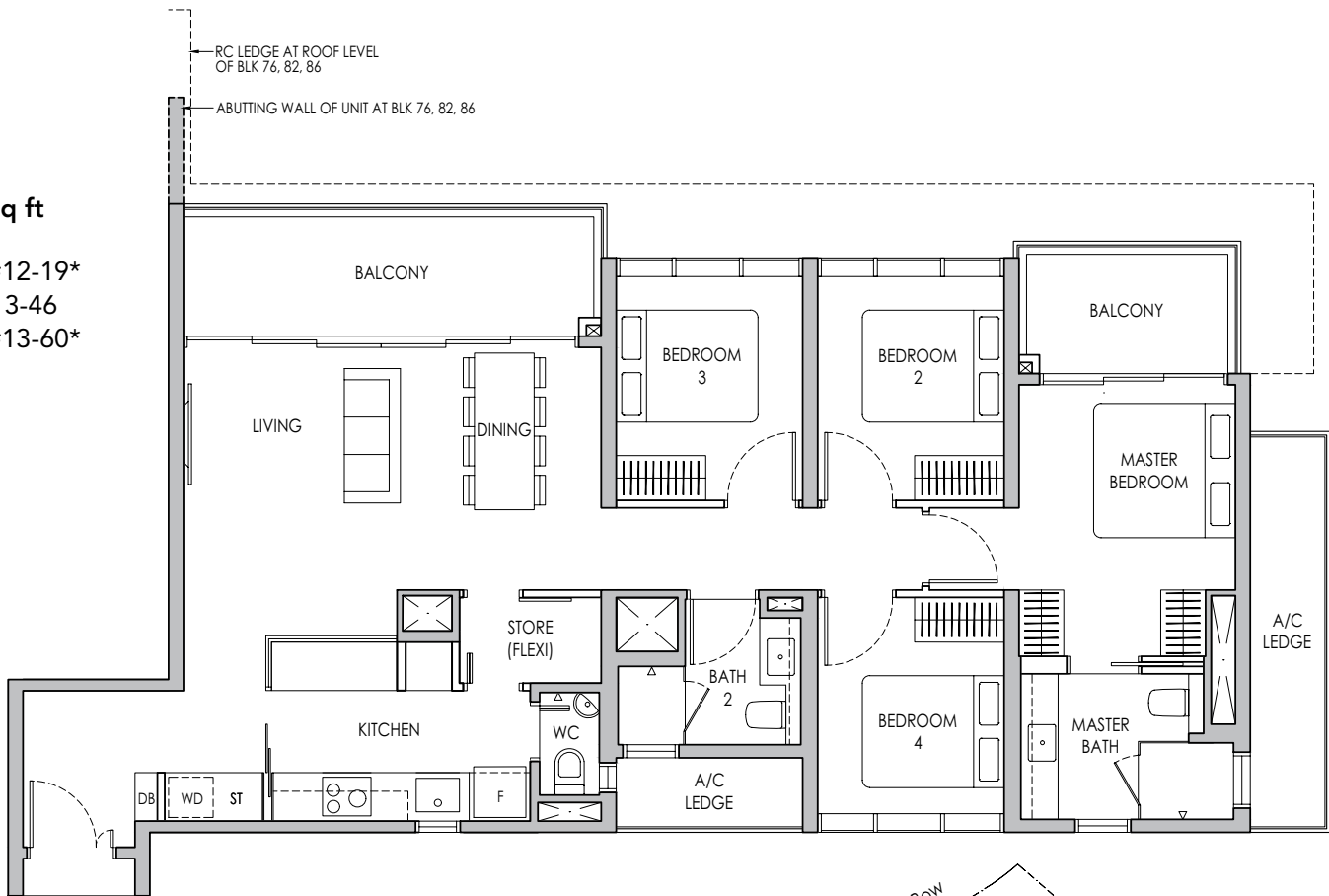
Type D1PF

123 sq m / 1324 sq ft

BLK 76 #05-19* - #12-19*

BLK 82 #05-46 - #13-46

BLK 86 #05-60* - #13-60*



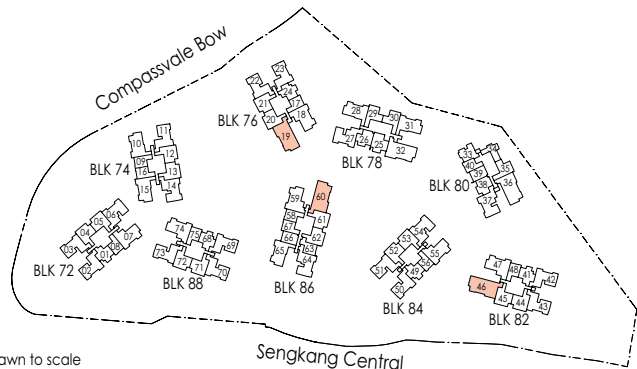
* Mirror Image



Area includes air-con (A/C) ledge, private enclosed space (PES), balcony and strata void area where applicable. Some units are mirror images of the apartment plans shown in the brochure. Please refer to the keyplan for orientation. The plans are subject to change as may be approved by relevant authorities. All floor plans are approximate measurements only and are subject to government re-survey. The balcony shall not be enclosed unless with the approved balcony screen. For an illustration of the approved balcony screen, please refer to the diagram annexed hereto as "Annexure A".



Keyplan is not drawn to scale



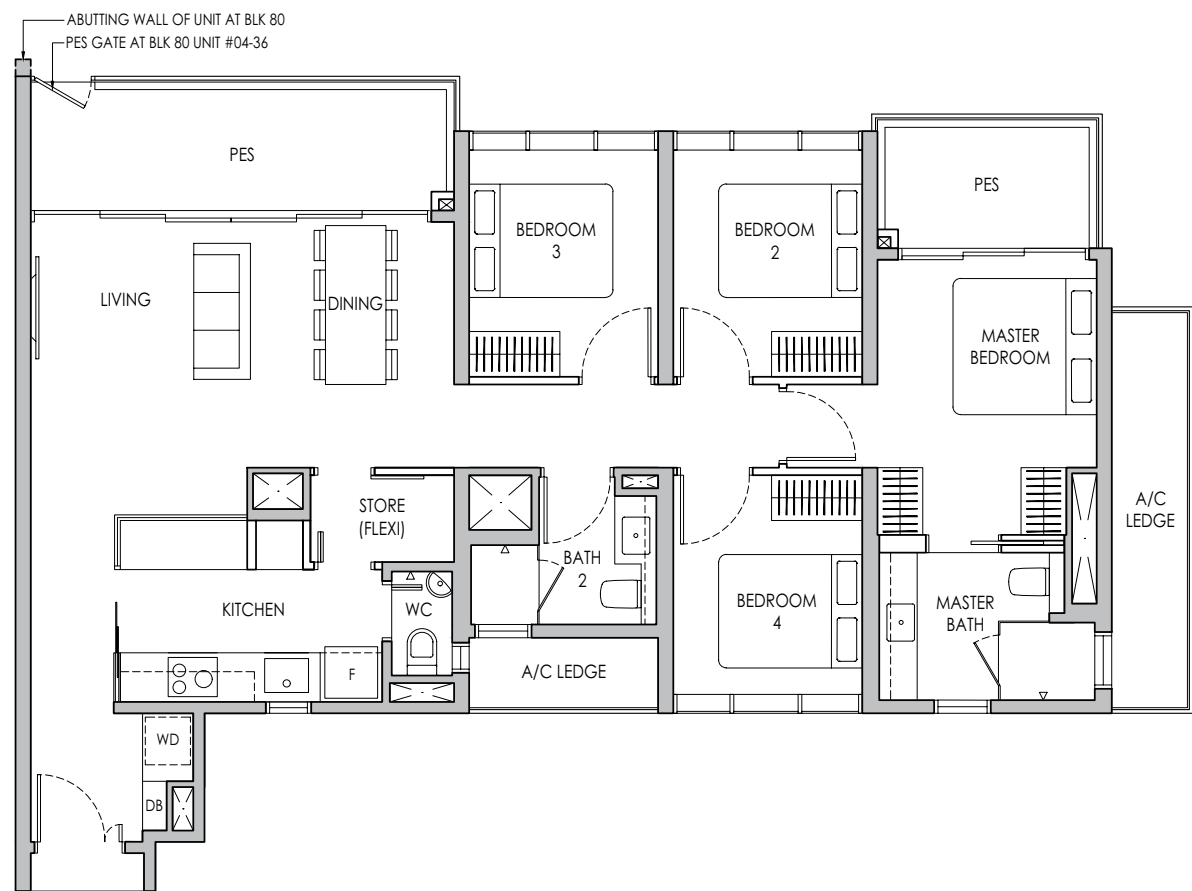
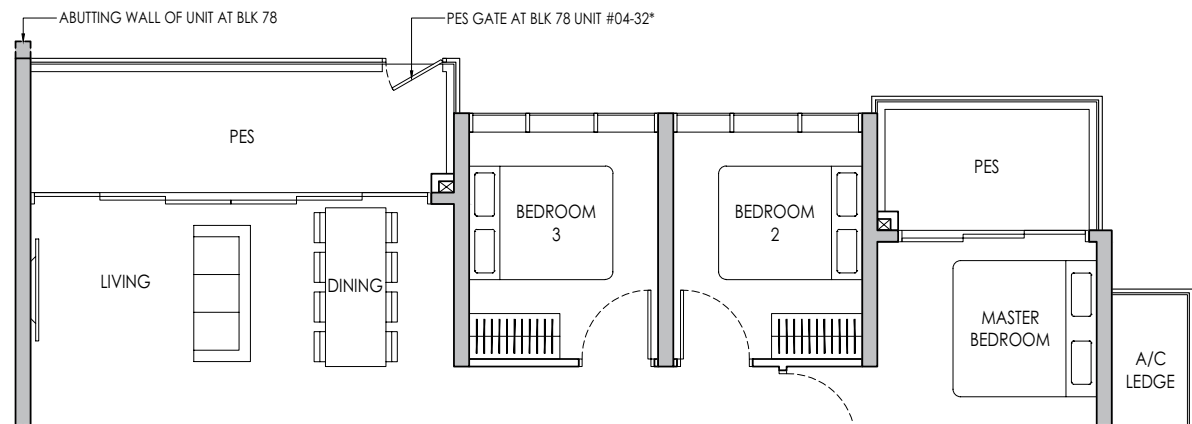
4-BEDROOM PREMIUM + FLEXI

Type D2PF(p)

122 sq m / 1313 sq ft

BLK 78 #04-32*

BLK 80 #04-36



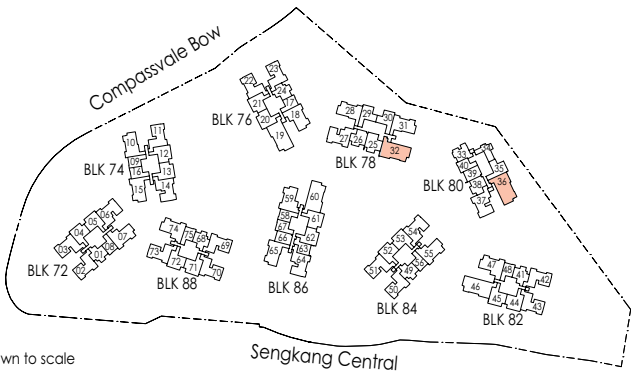
* Mirror Image



Area includes air-con (A/C) ledge, private enclosed space (PES), balcony and strata void area where applicable. Some units are mirror images of the apartment plans shown in the brochure. Please refer to the keyplan for orientation. The plans are subject to change as may be approved by relevant authorities. All floor plans are approximate measurements only and are subject to government re-survey. The balcony shall not be enclosed unless with the approved balcony screen. For an illustration of the approved balcony screen, please refer to the diagram annexed hereto as "Annexure A".



Keyplan is not drawn to scale



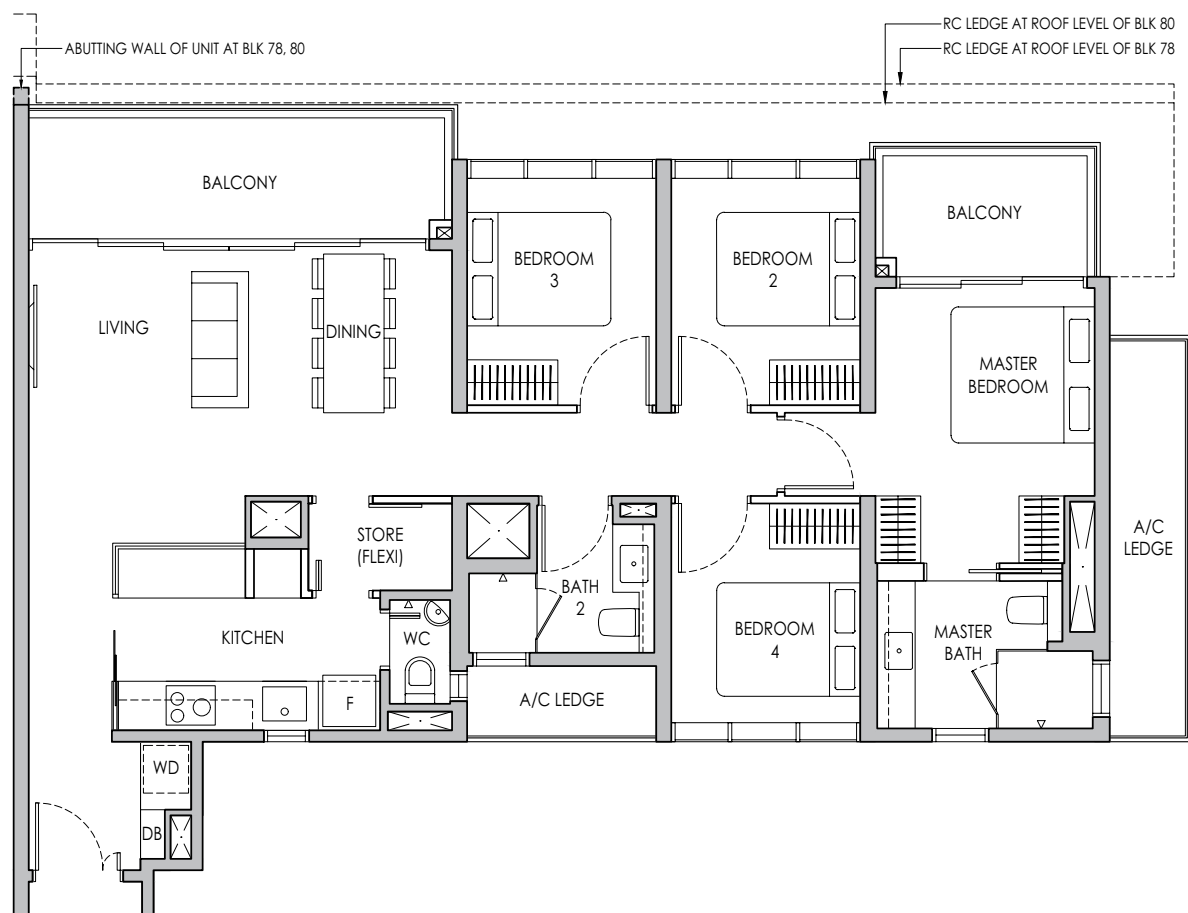
4-BEDROOM PREMIUM + FLEXI

Type D2PF

122 sq m / 1313 sq ft

BLK 78 #05-32* - #13-32*

BLK 80 #05-36 - #13-36



* Mirror Image



Area includes air-con (A/C) ledge, private enclosed space (PES), balcony and strata void area where applicable. Some units are mirror images of the apartment plans shown in the brochure. Please refer to the keyplan for orientation. The plans are subject to change as may be approved by relevant authorities. All floor plans are approximate measurements only and are subject to government re-survey. The balcony shall not be enclosed unless with the approved balcony screen. For an illustration of the approved balcony screen, please refer to the diagram annexed hereto as "Annexure A".



Keyplan is not drawn to scale

