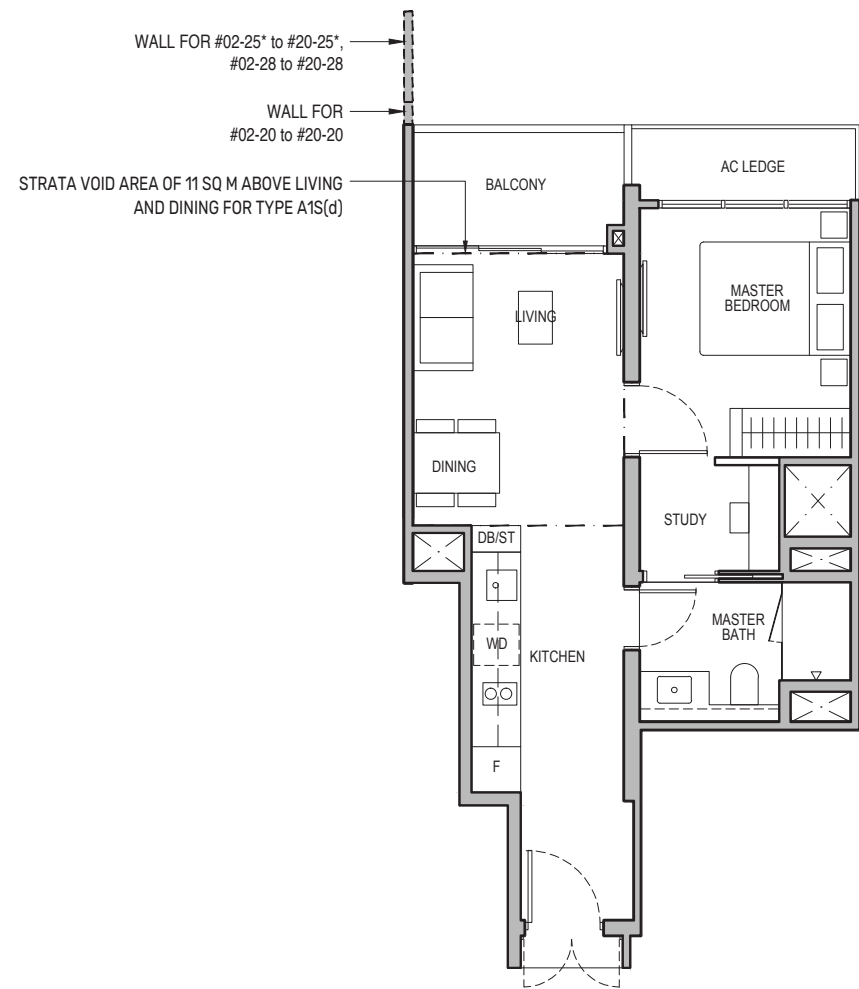


1-Bedroom + Study

Type A1S

49 sq m / 527 sq ft

BLK 96 : #02-20 to #19-20
BLK 98 : #02-25* to #19-25*, #02-28 to #19-28



Type A1S(d)

60 sq m / 646 sq ft

BLK 96 : #20-20
BLK 98 : #20-25*, #20-28

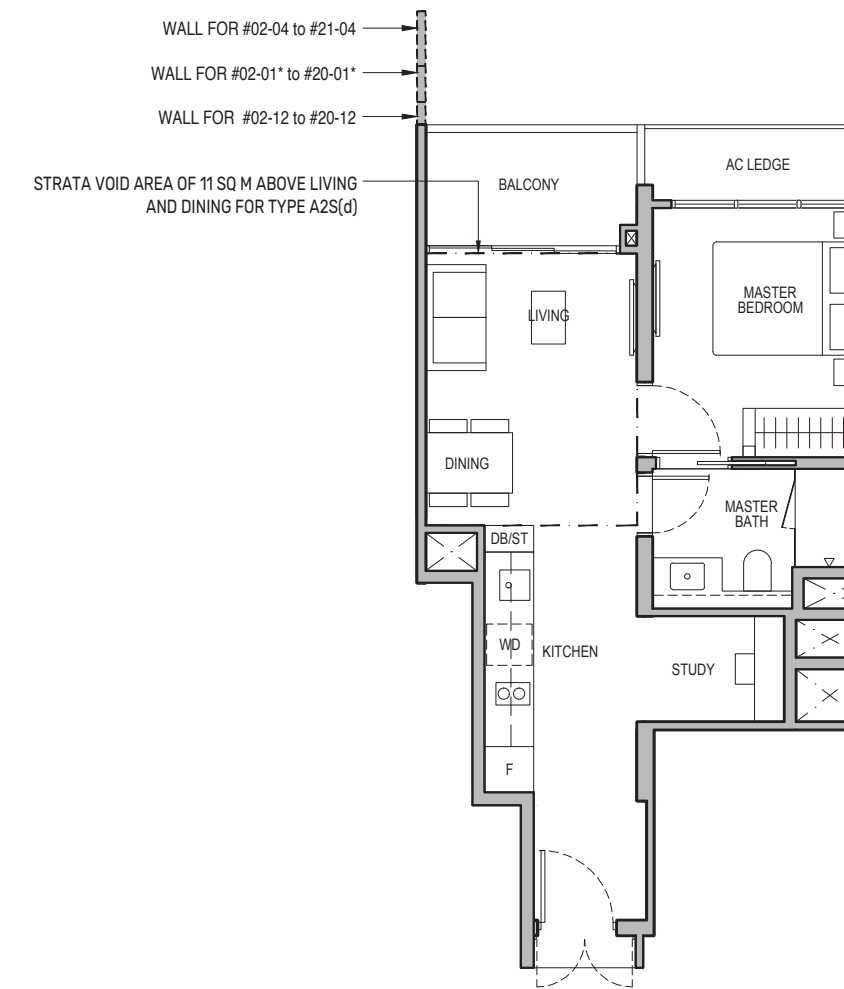
Including strata void area of 11 sq m above living and dining with 4.4m floor to ceiling height

1-Bedroom + Study

Type A2S

49 sq m / 527 sq ft

BLK 92 : #02-01* to #19-01*, #02-04 to #20-04
BLK 94 : #02-12 to #19-12



Type A2S(d)

60 sq m / 646 sq ft

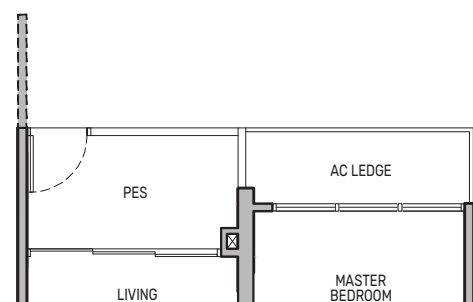
BLK 92 : #20-01*, #21-04
BLK 94 : #20-12

Including strata void area of 11 sq m above living and dining with 4.4m floor to ceiling height

Type A1S(p)

49 sq m / 527 sq ft

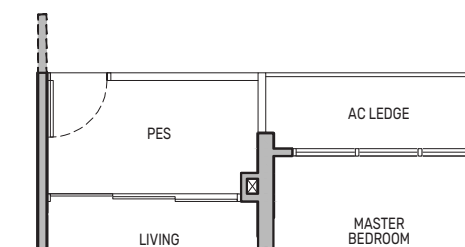
BLK 98 : #01-25*



Type A2S(p)

49 sq m / 527 sq ft

BLK 92 : #01-01*



0 0.5 1 2 5M

PES - Private Enclosed Space
F - Fridge
HS - Household Shelter
RC - Reinforced Concrete
WD - Washer cum Dryer
W/D - Washer & Dryer
W - Washer
D - Dryer
DB/ST - Distribution Board/Storage
WC - Water Closet
DW - Dishwasher
AC - Air-Conditioner

Wall not allowed to be hacked or altered

* Mirror Image

Area includes air-conditioner (AC) ledge, balcony and strata void area where applicable. The plans are subject to change as may be approved by relevant authorities. All floor plans are approximate measurements only and are subject to government re-survey. The balcony shall not be enclosed unless with the approved balcony screen. For an illustration of the approved balcony screen, please refer to the diagram annexed hereto as "Annexure A".



Keyplan is not drawn to scale

0 0.5 1 2 5M

PES - Private Enclosed Space
F - Fridge
HS - Household Shelter
RC - Reinforced Concrete
WD - Washer cum Dryer
W/D - Washer & Dryer
W - Washer
D - Dryer
DB/ST - Distribution Board/Storage
WC - Water Closet
DW - Dishwasher
AC - Air-Conditioner

Wall not allowed to be hacked or altered

* Mirror Image

Area includes air-conditioner (AC) ledge, balcony and strata void area where applicable. The plans are subject to change as may be approved by relevant authorities. All floor plans are approximate measurements only and are subject to government re-survey. The balcony shall not be enclosed unless with the approved balcony screen. For an illustration of the approved balcony screen, please refer to the diagram annexed hereto as "Annexure A".

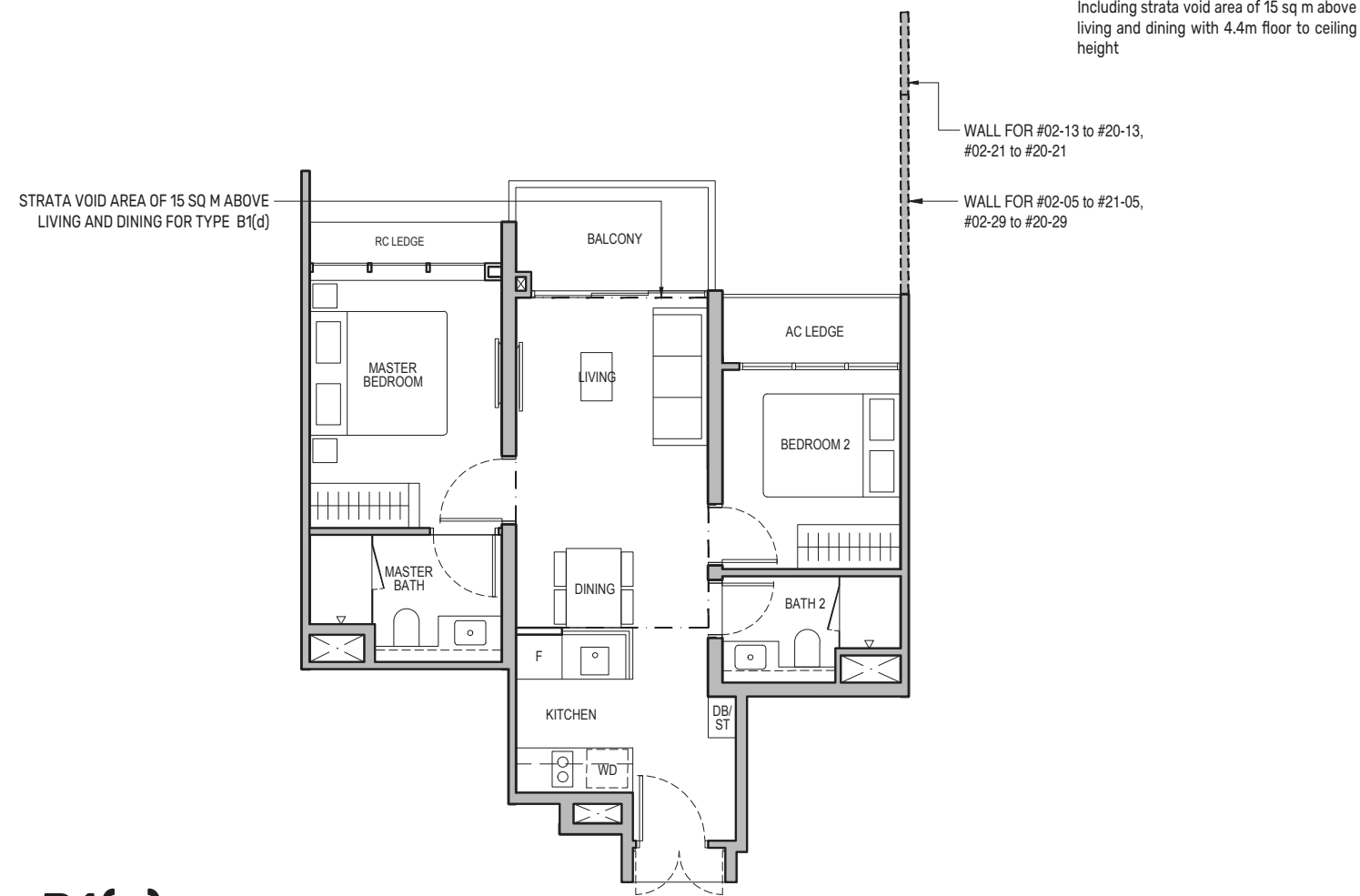


Keyplan is not drawn to scale

2-Bedroom

Type B1

62 sq m / 667 sq ft
 BLK 92 : #02-05 to #20-05
 BLK 94 : #02-13 to #19-13
 BLK 96 : #02-21 to #19-21
 BLK 98 : #02-29 to #19-29

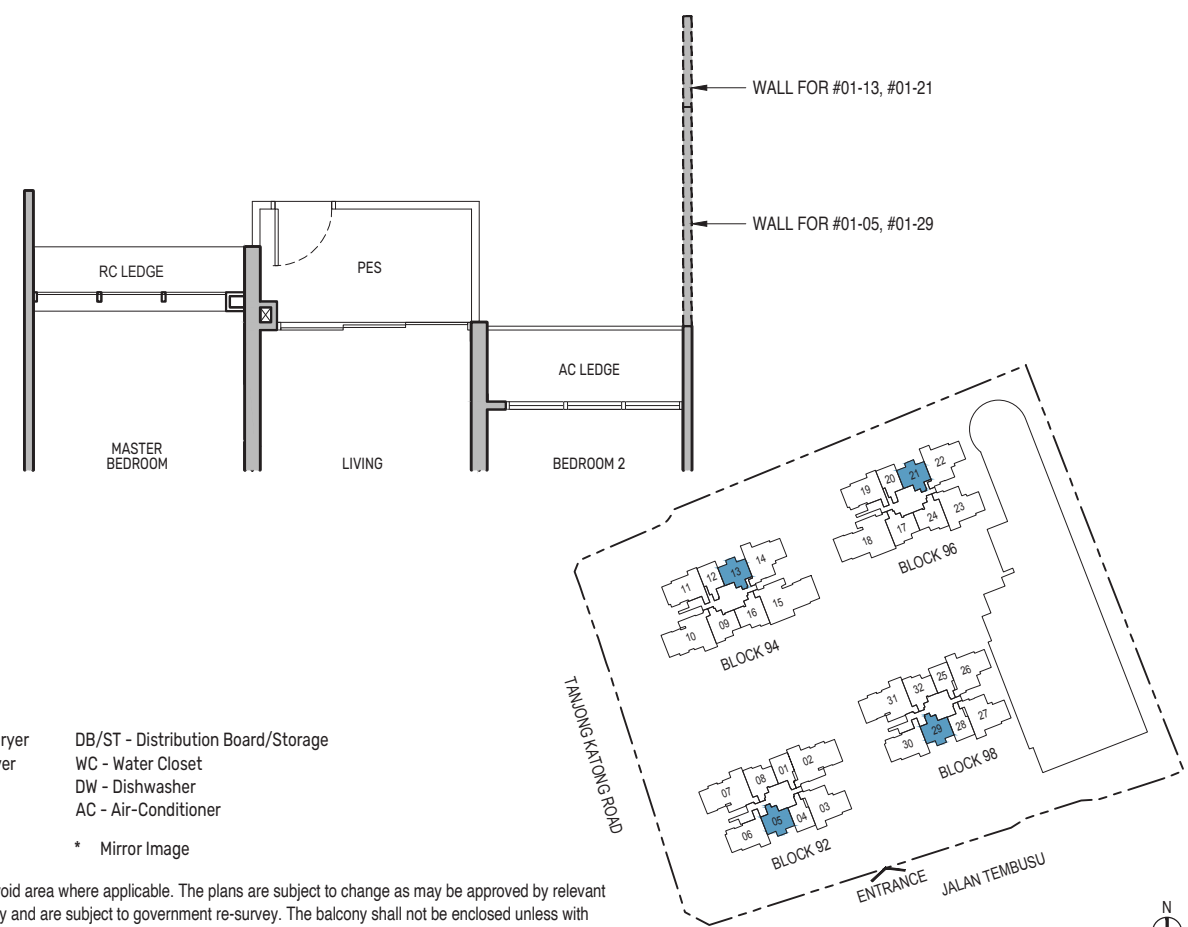


Type B1(d)

77 sq m / 829 sq ft
 BLK 92 : #21-05
 BLK 94 : #20-13
 BLK 96 : #20-21
 BLK 98 : #20-29

Type B1(p)

62 sq m / 667 sq ft
 BLK 92 : #01-05
 BLK 94 : #01-13
 BLK 96 : #01-21
 BLK 98 : #01-29



0 0.5 1 2 5M

PES - Private Enclosed Space
 F - Fridge
 HS - Household Shelter
 RC - Reinforced Concrete

WD - Washer cum Dryer
 W/D - Washer & Dryer
 W - Washer
 D - Dryer

DB/ST - Distribution Board/Storage
 WC - Water Closet
 DW - Dishwasher
 AC - Air-Conditioner

Wall not allowed to be hacked or altered

* Mirror Image

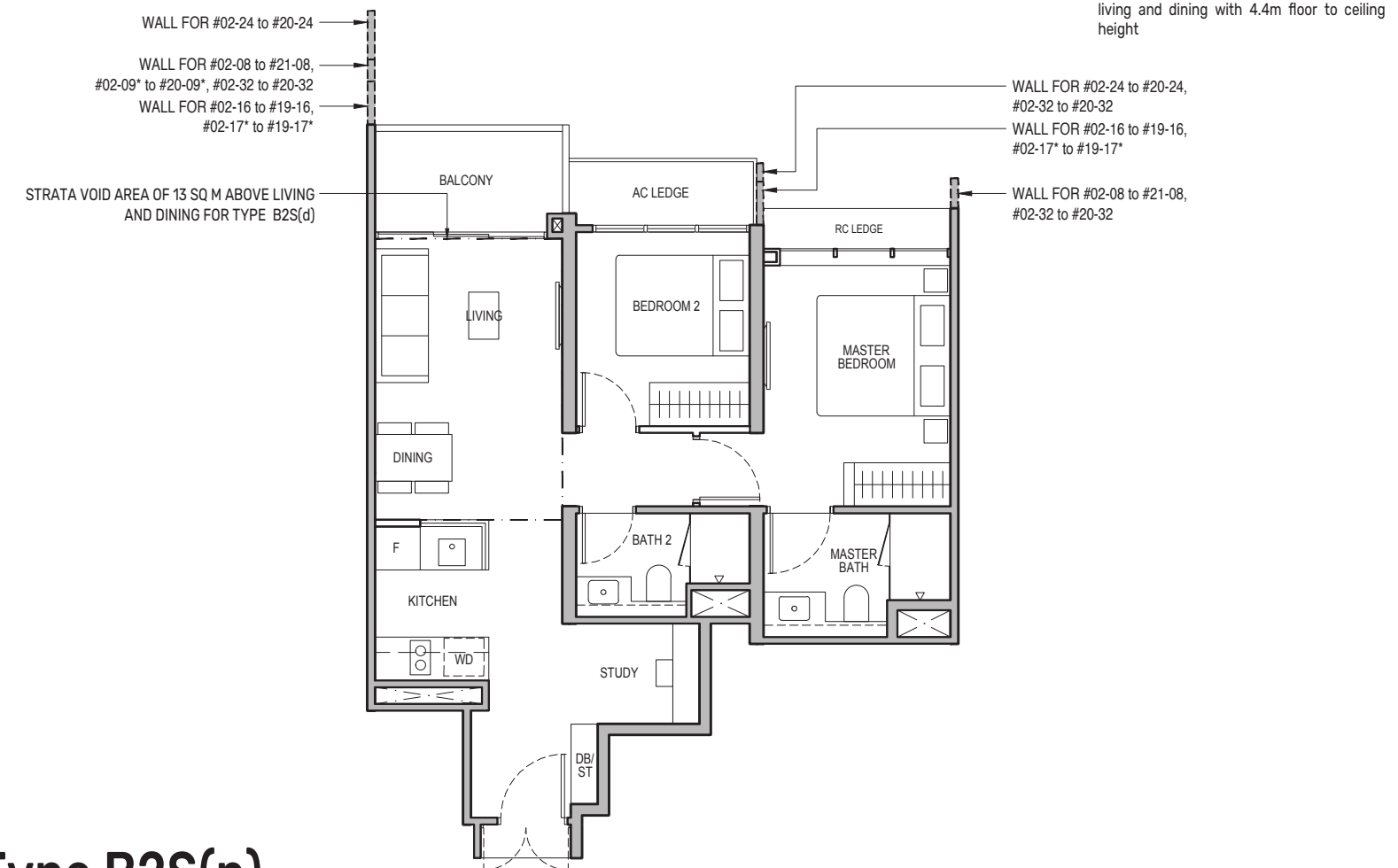
Area includes air-conditioner (AC) ledge, balcony and strata void area where applicable. The plans are subject to change as may be approved by relevant authorities. All floor plans are approximate measurements only and are subject to government re-survey. The balcony shall not be enclosed unless with the approved balcony screen. For an illustration of the approved balcony screen, please refer to the diagram annexed hereto as "Annexure A".

Keyplan is not drawn to scale

2-Bedroom + Study

Type B2S

69 sq m / 743 sq ft
 BLK 92 : #02-08 to #20-08
 BLK 94 : #02-09* to #19-09*, #02-16 to #19-16
 BLK 96 : #02-17* to #19-17*, #02-24 to #19-24
 BLK 98 : #02-32 to #19-32

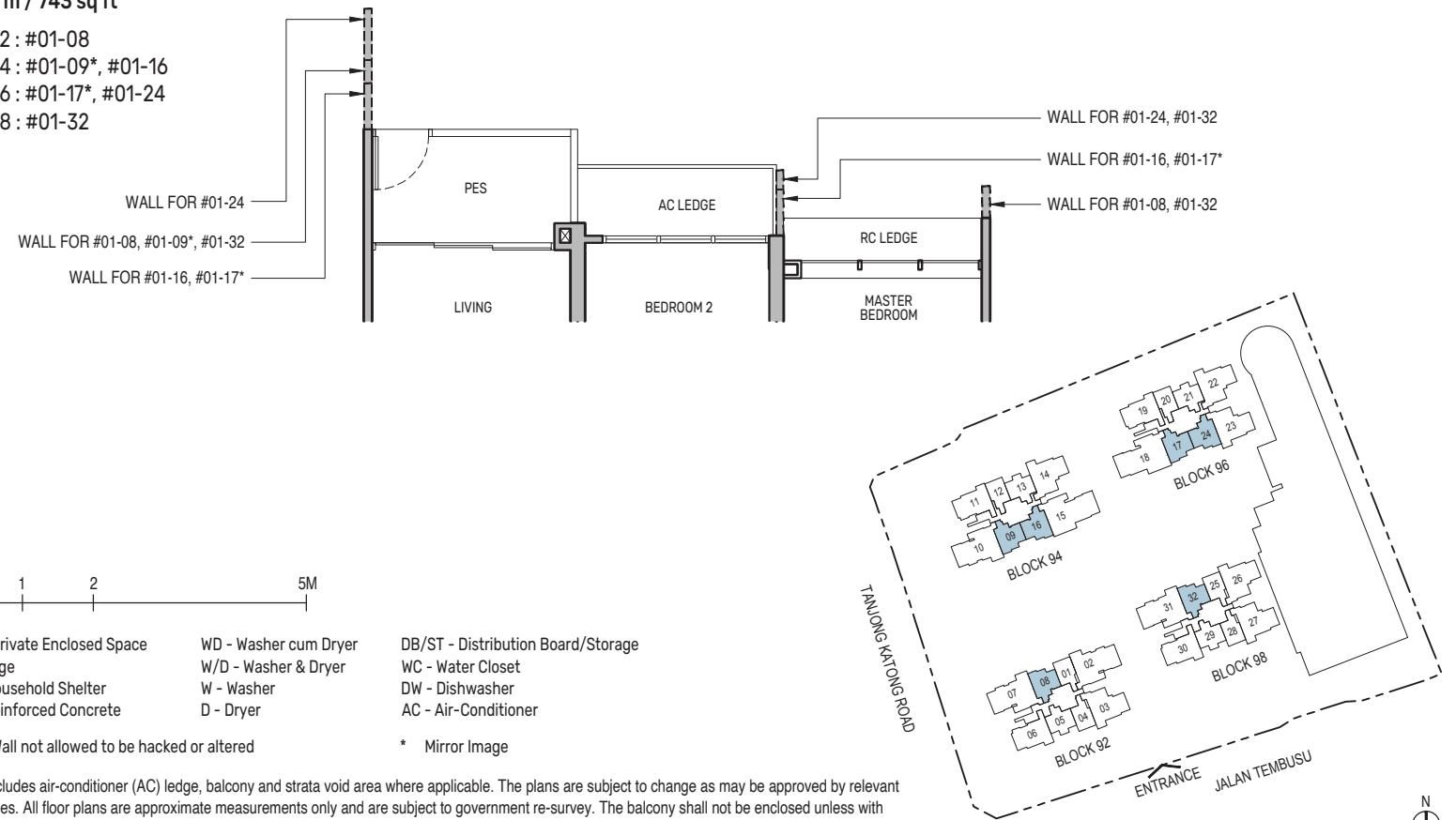


Type B2S(d)

82 sq m / 883 sq ft
 BLK 92 : #21-08
 BLK 94 : #20-09*
 BLK 96 : #20-24
 BLK 98 : #20-32

Type B2S(p)

69 sq m / 743 sq ft
 BLK 92 : #01-08
 BLK 94 : #01-09*, #01-16
 BLK 96 : #01-17*, #01-24
 BLK 98 : #01-32



0 0.5 1 2 5M

PES - Private Enclosed Space
 F - Fridge
 HS - Household Shelter
 RC - Reinforced Concrete

WD - Washer cum Dryer
 W/D - Washer & Dryer
 W - Washer
 D - Dryer

DB/ST - Distribution Board/Storage
 WC - Water Closet
 DW - Dishwasher
 AC - Air-Conditioner

Wall not allowed to be hacked or altered

* Mirror Image

Area includes air-conditioner (AC) ledge, balcony and strata void area where applicable. The plans are subject to change as may be approved by relevant authorities. All floor plans are approximate measurements only and are subject to government re-survey. The balcony shall not be enclosed unless with the approved balcony screen. For an illustration of the approved balcony screen, please refer to the diagram annexed hereto as "Annexure A".

Keyplan is not drawn to scale

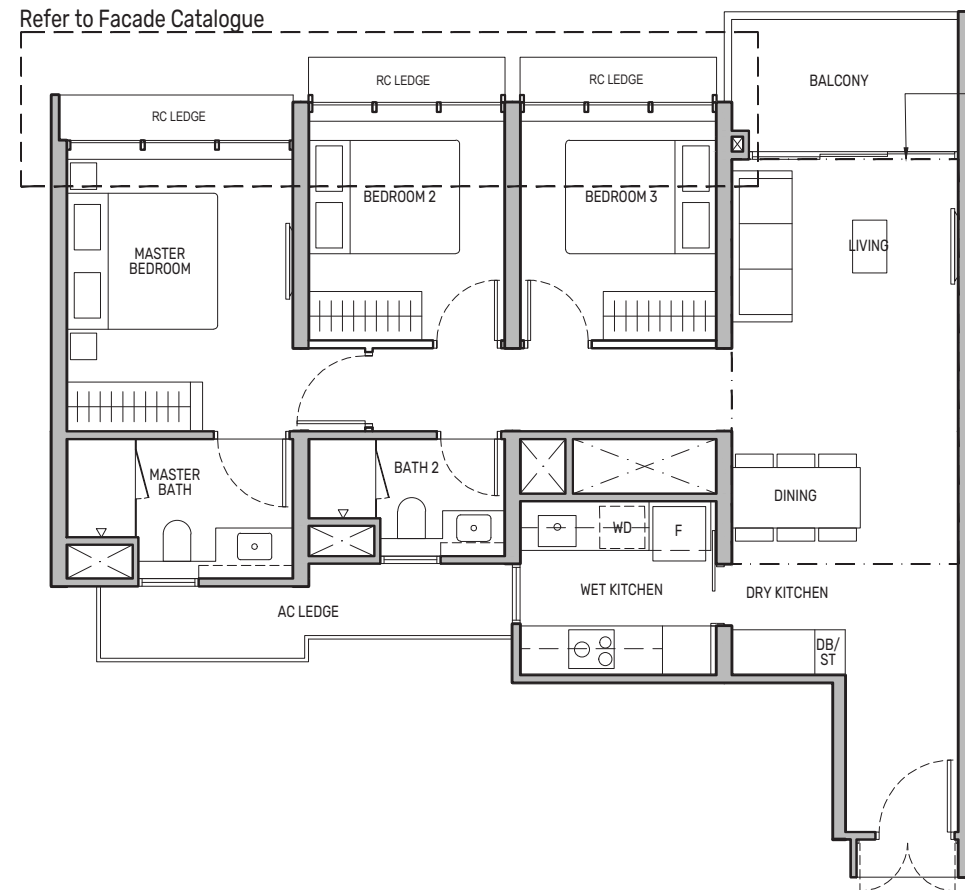
3-Bedroom

Type C1

92 sq m / 990 sq ft

- BLK 92 : #02-06* to #20-06*
- BLK 94 : #02-11 to #19-11
- BLK 96 : #02-19 to #19-19
- BLK 98 : #03-30* to #19-30*

Refer to Facade Catalogue



Type C1(d)

110 sq m / 1184 sq ft

- BLK 92 : #21-06*
- BLK 94 : #20-11
- BLK 96 : #20-19
- BLK 98 : #20-30*

Including strata void area of 18 sq m above living and dining with 4.4m floor to ceiling height

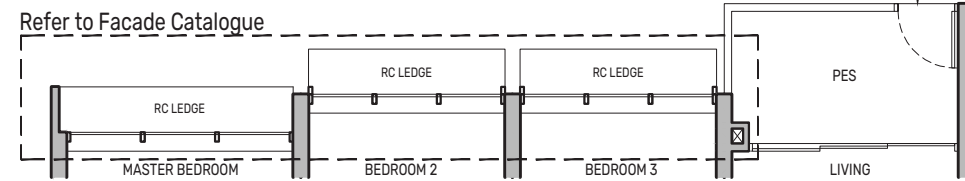
STRATA VOID AREA OF 18 SQ M ABOVE LIVING AND DINING FOR TYPE C1(d)

Type C1(p)

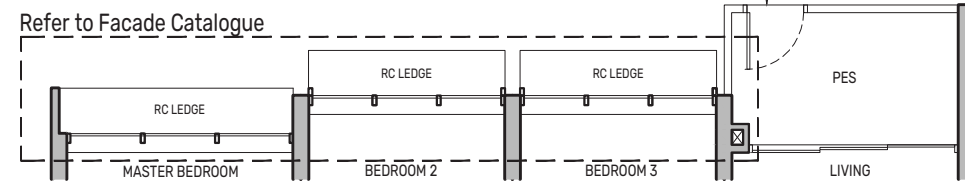
92 sq m / 990 sq ft

- BLK 92 : #01-06*
- BLK 94 : #01-11
- BLK 96 : #01-19

Refer to Facade Catalogue



Refer to Facade Catalogue



- PES - Private Enclosed Space
- F - Fridge
- HS - Household Shelter
- RC - Reinforced Concrete
- WD - Washer cum Dryer
- W/D - Washer & Dryer
- W - Washer
- D - Dryer
- DB/ST - Distribution Board/Storage
- WC - Water Closet
- DW - Dishwasher
- AC - Air-Conditioner

Area includes air-conditioner (AC) ledge, balcony and strata void area where applicable. The plans are subject to change as may be approved by relevant authorities. All floor plans are approximate measurements only and are subject to government re-survey. The balcony shall not be enclosed unless with the approved balcony screen. For an illustration of the approved balcony screen, please refer to the diagram annexed hereto as "Annexure A".



Keyplan is not drawn to scale

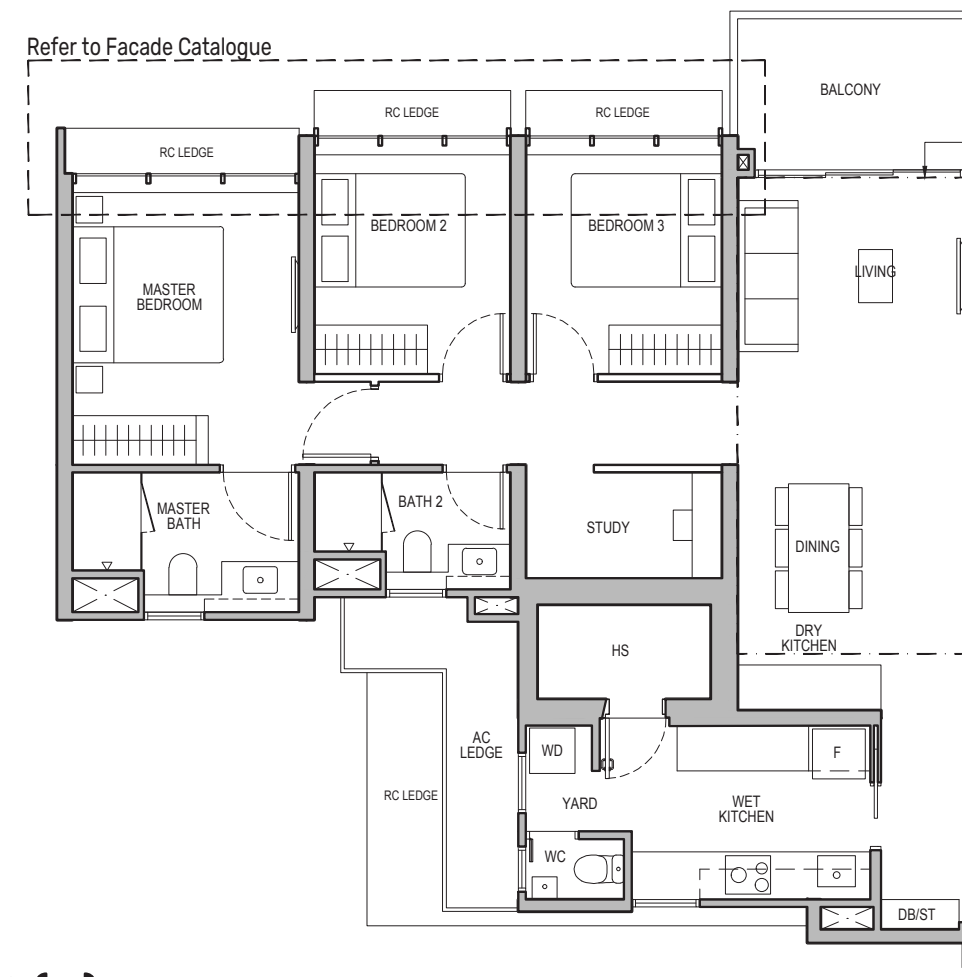
3-Bedroom + Study

Type C2S

109 sq m / 1173 sq ft

- BLK 92 : #02-03 to #20-03
- BLK 94 : #02-14* to #19-14*
- BLK 96 : #02-22* to #19-22*, #02-23 to #19-23
- BLK 98 : #02-26* to #19-26*, #02-27 to #19-27

Refer to Facade Catalogue



Type C2S(d)

130 sq m / 1399 sq ft

- BLK 92 : #21-03
- BLK 94 : #20-14*
- BLK 96 : #20-22*, #20-23
- BLK 98 : #20-26*, #20-27

Including strata void area of 21 sq m above living and dining with 4.4m floor to ceiling height

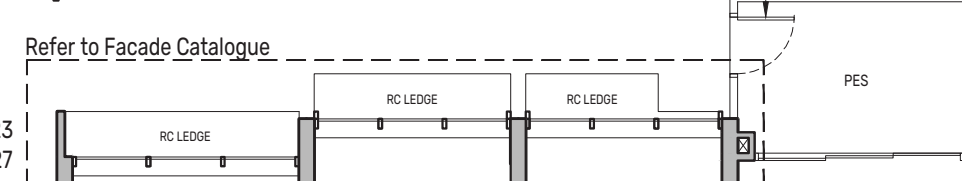
STRATA VOID AREA OF 21 SQ M ABOVE LIVING AND DINING FOR TYPE C2S(d)

Type C2S(p)

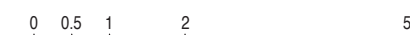
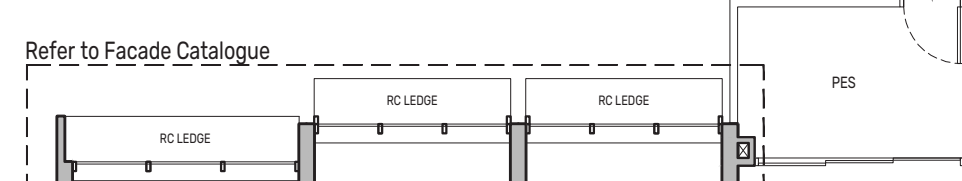
109 sq m / 1173 sq ft

- BLK 92 : #01-03
- BLK 94 : #01-14*
- BLK 96 : #01-22*, #01-23
- BLK 98 : #01-26*, #01-27

Refer to Facade Catalogue



Refer to Facade Catalogue



- PES - Private Enclosed Space
- F - Fridge
- HS - Household Shelter
- RC - Reinforced Concrete
- WD - Washer cum Dryer
- W/D - Washer & Dryer
- W - Washer
- D - Dryer
- DB/ST - Distribution Board/Storage
- WC - Water Closet
- DW - Dishwasher
- AC - Air-Conditioner

Area includes air-conditioner (AC) ledge, balcony and strata void area where applicable. The plans are subject to change as may be approved by relevant authorities. All floor plans are approximate measurements only and are subject to government re-survey. The balcony shall not be enclosed unless with the approved balcony screen. For an illustration of the approved balcony screen, please refer to the diagram annexed hereto as "Annexure A".



Keyplan is not drawn to scale

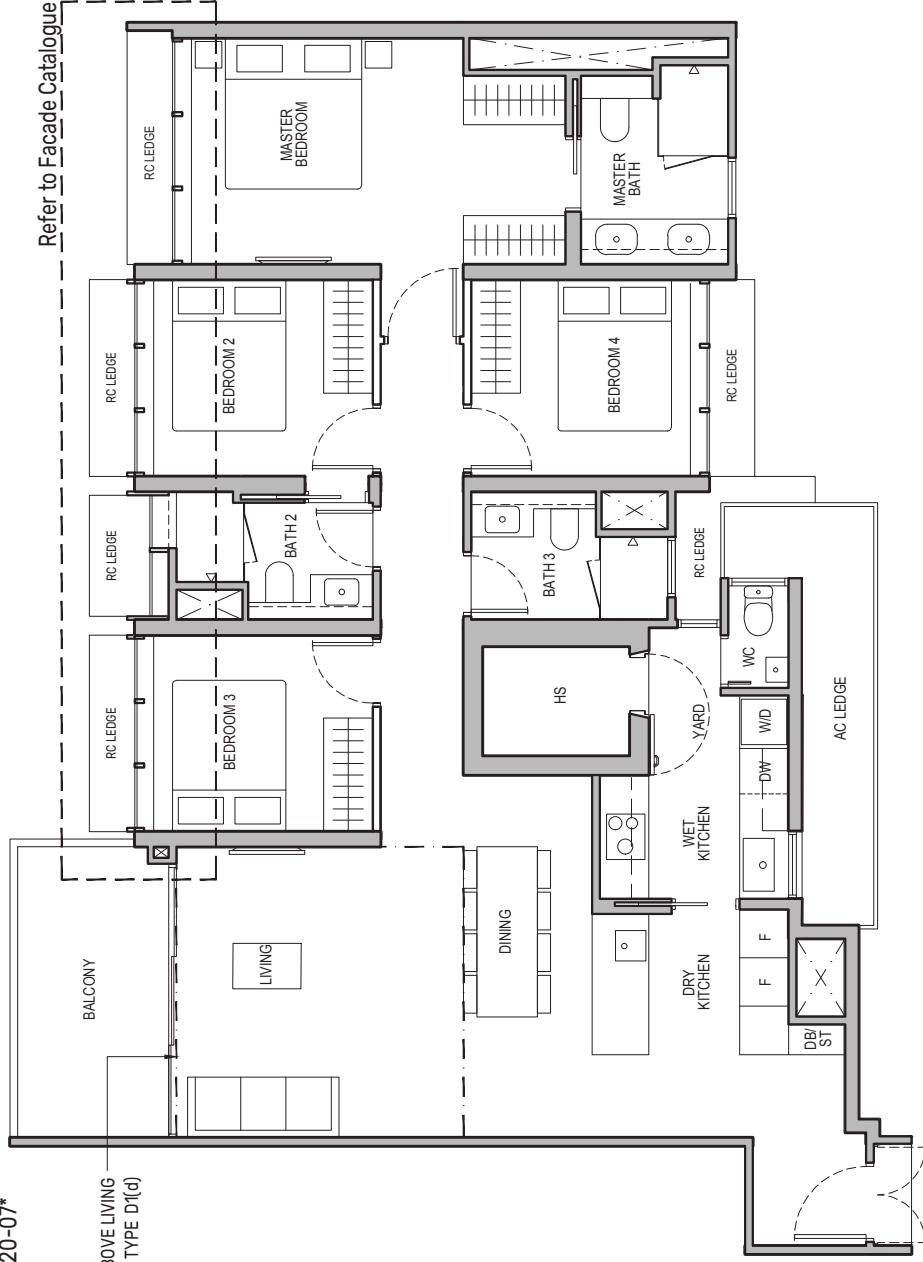
4-Bedroom

Type D1

133 sq m / 1432 sq ft

BLK 92 : #02-02 to #19-02, #02-07* to #20-07*
 BLK 94 : #02-10 to #19-10
 BLK 98 : #02-31* to #19-31*

STRATA VOID AREA OF 16 SQ M ABOVE LIVING AND DINING FOR TYPE D1(d)

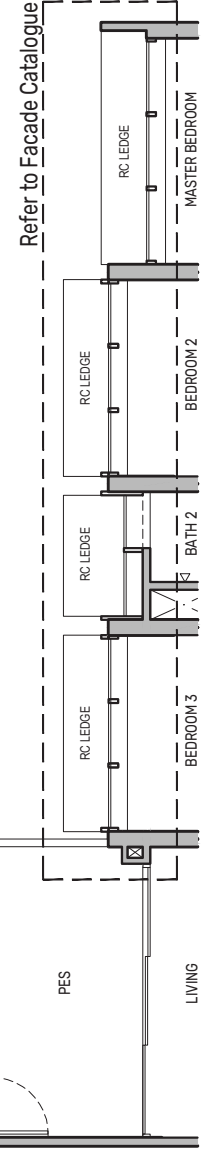


Refer to Facade Catalogue

Type D1(p)

133 sq m / 1432 sq ft

BLK 92 : #01-02, #01-07*
 BLK 94 : #01-10
 BLK 98 : #01-31*



Refer to Facade Catalogue

- W - Washer
- D - Dryer
- AC - Air-Conditioner
- RC - Reinforced Concrete
- PES - Private Enclosed Space
- F - Fridge
- HS - Household Shelter
- WD - Washer cum Dryer
- W/D - Washer & Dryer
- W - Washer
- D - Dryer
- DB/ST - Distribution Board/Storage
- WC - Water Closet
- DW - Dishwasher
- AC - Air-Conditioner

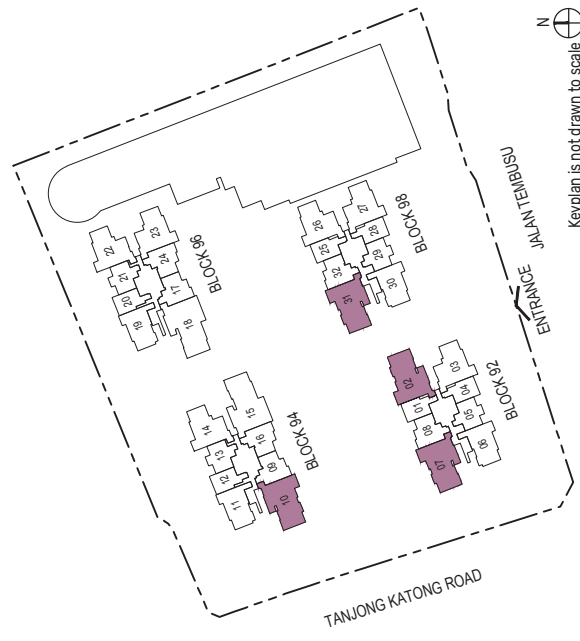
Area includes air-conditioner (AC) ledge, balcony and strata void area where applicable. The plans are subject to change as may be approved by relevant authorities. All floor plans are approximate measurements only and are subject to government re-survey. The balcony shall not be enclosed unless with the approved balcony screen. For an illustration of the approved balcony screen, please refer to the diagram annexed hereto as "Annexure A".

Type D1(d)

149 sq m / 1604 sq ft

BLK 92 : #20-02, #21-07*
 BLK 94 : #20-10
 BLK 98 : #20-31*

Including strata void area of 16 sq m above living and dining with 4.4m floor to ceiling height



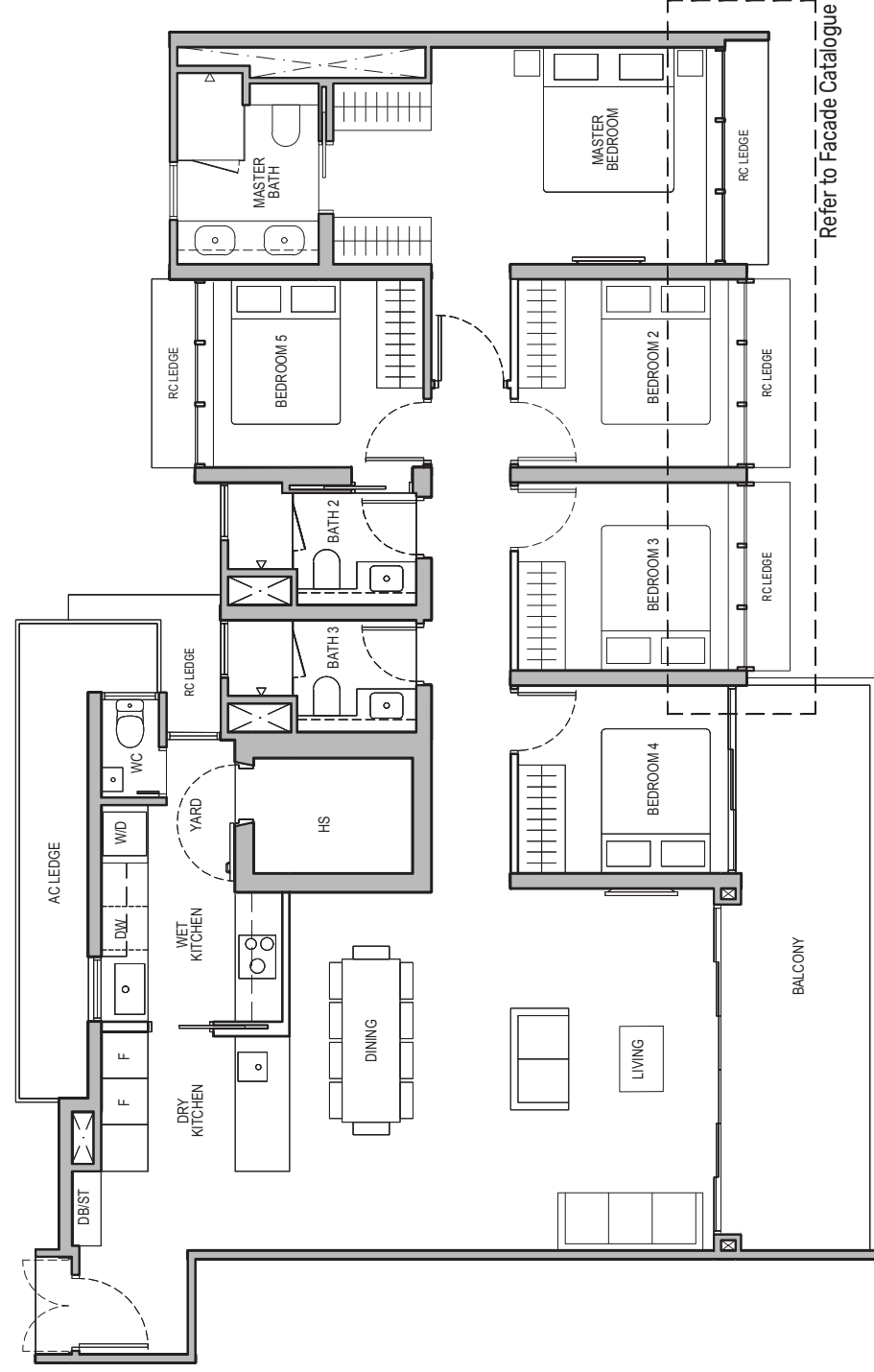
Keyplan is not drawn to scale

5-Bedroom

Type E1

159 sq m / 1711 sq ft

BLK 94 : #02-15 to #19-15
 BLK 96 : #02-18* to #19-18*

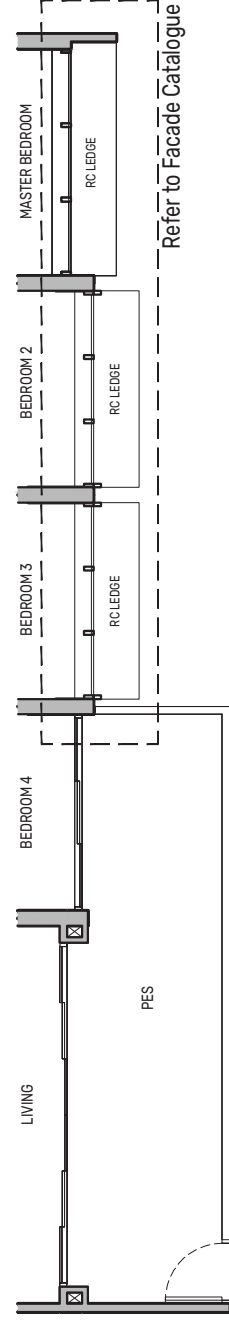
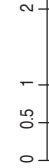


Refer to Facade Catalogue

Type E1(p)

159 sq m / 1711 sq ft

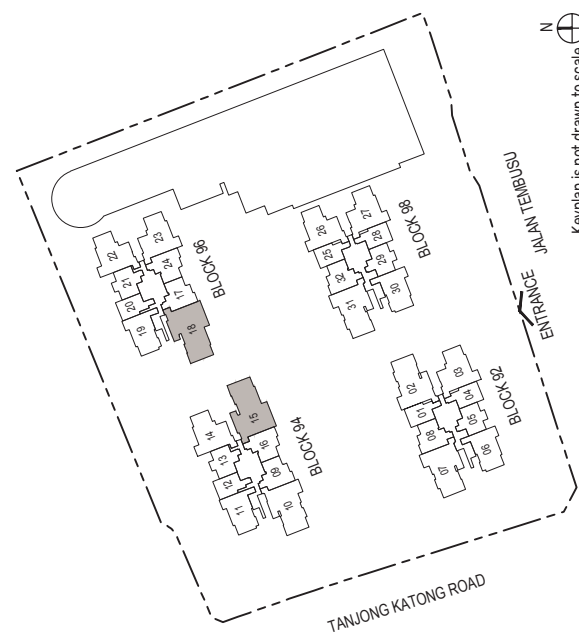
BLK 94 : #01-15
 BLK 96 : #01-18*



Refer to Facade Catalogue

- W - Washer
- D - Dryer
- AC - Air-Conditioner
- RC - Reinforced Concrete
- PES - Private Enclosed Space
- F - Fridge
- HS - Household Shelter
- WD - Washer cum Dryer
- W/D - Washer & Dryer
- W - Washer
- D - Dryer
- DB/ST - Distribution Board/Storage
- WC - Water Closet
- DW - Dishwasher
- AC - Air-Conditioner

Area includes air-conditioner (AC) ledge, balcony and strata void area where applicable. The plans are subject to change as may be approved by relevant authorities. All floor plans are approximate measurements only and are subject to government re-survey. The balcony shall not be enclosed unless with the approved balcony screen. For an illustration of the approved balcony screen, please refer to the diagram annexed hereto as "Annexure A".



Keyplan is not drawn to scale



A new dimension of living well

Soaring above it all, these 2 exclusive penthouse units are designed for larger multi-generational families looking to live comfortably under one roof. The luxurious 5-bedroom penthouses boast Master and Junior Master rooms that are exceptionally spacious with generously-sized walk-in wardrobes. Families who love to entertain at home will appreciate the spacious dry kitchen, thoughtfully designed to overlook the living and dining area.



FOR ILLUSTRATION ONLY
*Please refer to approved BP plan and specifications for actual walk-in wardrobe provision.

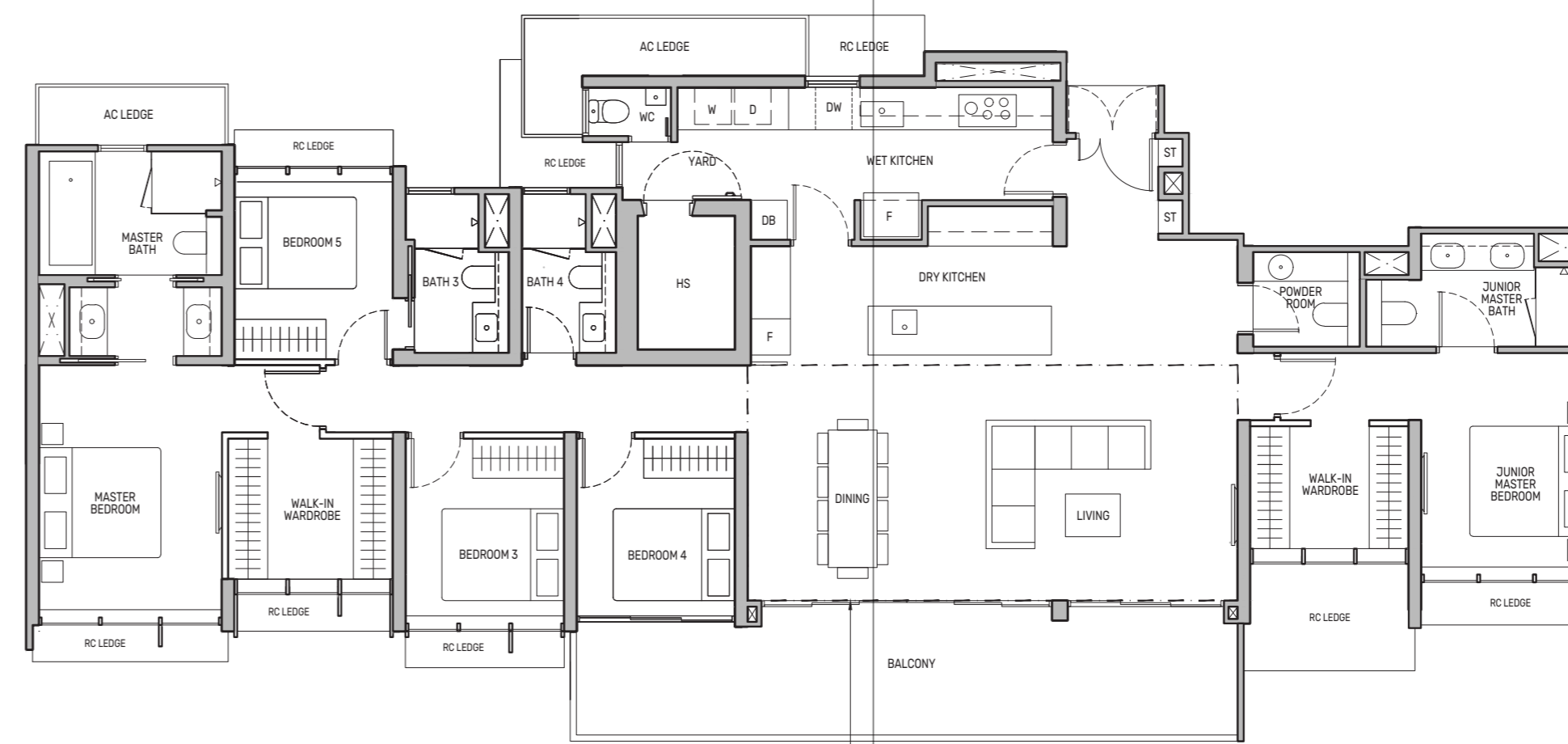
Penthouse (5-Bedroom)

Type PH

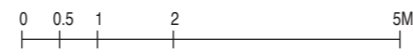
250 sq m / 2691 sq ft

BLK 94 : #20-15*
BLK 96 : #20-18

Including strata void area of 33 sq m above living and dining with 4.4m floor to ceiling height



STRATA VOID AREA OF 33 SQ M ABOVE LIVING AND DINING FOR TYPE PH



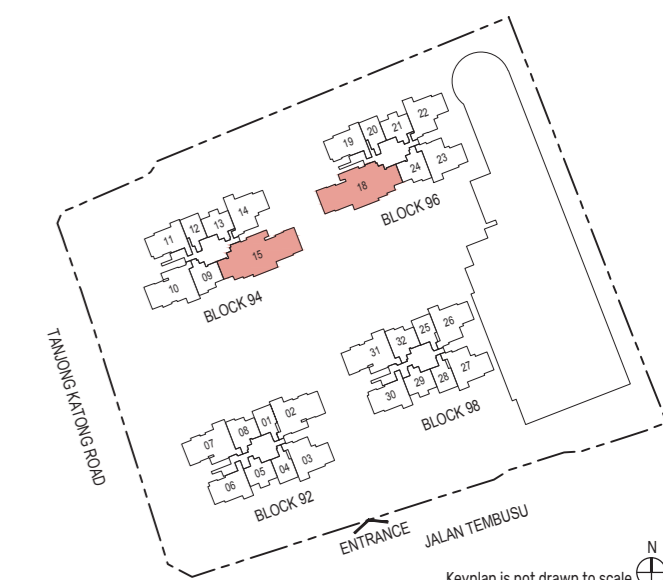
Wall not allowed to be hacked or altered
Mirror Image

PES - Private Enclosed Space
F - Fridge
HS - Household Shelter
RC - Reinforced Concrete

WD - Washer cum Dryer
W/D - Washer & Dryer
W - Washer
D - Dryer

DB/ST - Distribution Board/Storage
WC - Water Closet
DW - Dishwasher
AC - Air-Conditioner

Area includes air-conditioner (AC) ledge, balcony and strata void area where applicable. The plans are subject to change as may be approved by relevant authorities. All floor plans are approximate measurements only and are subject to government re-survey. The balcony shall not be enclosed unless with the approved balcony screen. For an illustration of the approved balcony screen, please refer to the diagram annexed hereto as "Annexure A".



Keyplan is not drawn to scale