

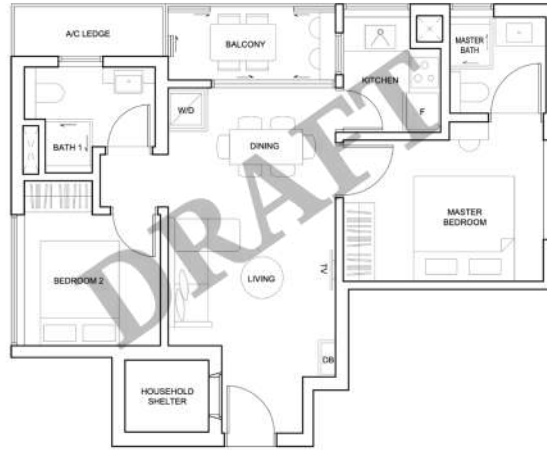
# FARM

## 2 BEDROOM TYPE A1

67 SQM (721 SQFT)  
UNIT 03-05,04-05



KEY PLAN: 3RD TO 4TH STOREY  
not to scale



A/C - Air Conditioning    W/D - Washer cum Dryer  
DB - Distribution Board    □ - Services void space  
F - Fridge                      (excluded from strata area)



All floor area include a/c ledge and balcony.  
Balconies are not to be enclosed except with a balcony screen which has been approved and complies with the Competent Authority's guidelines.  
For an illustration of the approved balcony screen, please refer to diagram annexed hereto as "Annexure"

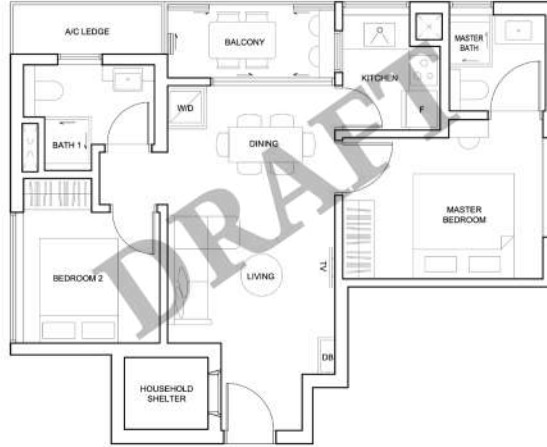
# FARM

## 2 BEDROOM TYPE A1-A

67 SQM (721 SQFT)  
UNIT 05-05



KEY PLAN: 5TH STOREY  
not to scale



A/C - Air Conditioning  
DB - Distribution Board  
F - Fridge  
WD - Washer cum Dryer  
Services void space  
(excluded from strata area)



All floor area include a/c ledge and balcony.  
Balconies are not to be enclosed except with a balcony screen which has been approved and complies with the Competent Authority's guidelines.  
For an illustration of the approved balcony screen, please refer to diagram annexed hereto as "Annexure"

# FARM

## 3 BEDROOM TYPE B1

96 SQM (1033 SQFT)  
UNIT 02-03, 03-03, 04-03, 05-03



KEY PLAN: 2ND TO 5TH STOREY  
not to scale



A/C - Air Conditioning  
DB - Distribution Board  
F - Fridge  
W/D - Washer cum Dryer  
Services void space  
(excluded from strata area)



All floor area include a/c ledge and balcony.  
Balconies are not to be enclosed except with a balcony screen which has been approved and complies with the Competent Authority's guidelines.  
For an illustration of the approved balcony screen, please refer to diagram annexed hereto as "Annexure"

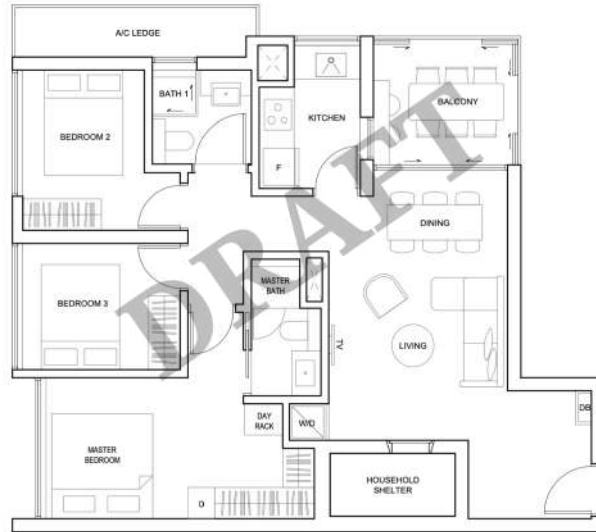
# FARM

## 3 BEDROOM TYPE B2

94 SQM (1012 SQFT)  
UNIT 02-01, 03-01, 04-01



KEY PLAN: 3RD TO 4TH STOREY  
not to scale



A/C - Air Conditioning  
DB - Distribution Board  
F - Fridge  
WD - Washer cum Dryer  
Services void space  
(excluded from strata area)



All floor area include a/c ledge and balcony.  
Balconies are not to be enclosed except with a balcony screen which has been approved and complies with the Competent Authority's guidelines.  
For an illustration of the approved balcony screen, please refer to diagram annexed hereto as "Annexure"

# FARM

## 3 BEDROOM TYPE B2-A

94 SQM (1012 SQFT)  
UNIT 05-01



A/C - Air Conditioning  
DB - Distribution Board  
F - Fridge

W/D - Washer cum Dryer  
Services void space  
(excluded from strata area)



All floor area include a/c ledge and balcony.  
Balconies are not to be enclosed except with a balcony screen which has been approved and complies with the Competent Authority's guidelines.  
For an illustration of the approved balcony screen, please refer to diagram annexed hereto as "Annexure"

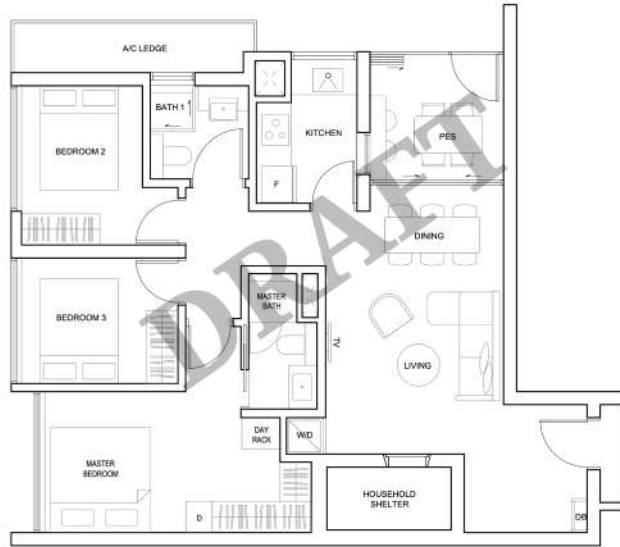
# FARM

## 3 BEDROOM TYPE B3

96 SQM (1033 SQFT)  
UNIT 01-01



KEY PLAN: 1ST STOREY  
not to scale



A/C - Air Conditioning  
DB - Distribution Board  
F - Fridge  
WID - Washer cum Dryer  
□ - Services void space  
(excluded from strata area)



All floor area include a/c ledge and balcony.  
Balconies are not to be enclosed except with a balcony screen which has been approved and complies with the Competent Authority's guidelines.  
For an illustration of the approved balcony screen, please refer to diagram annexed hereto as "Annexure"

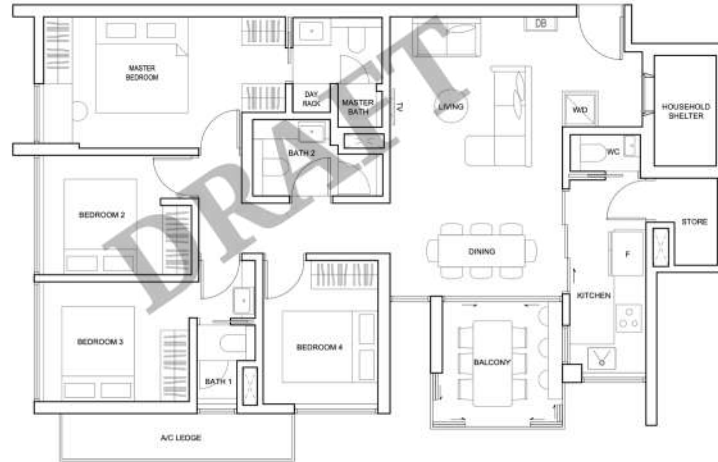
# FARM

## 4 BEDROOM TYPE C1

115 SQM (1238 SQFT)  
UNIT 02-02, 03-02, 04-02, 05-02



KEY PLAN: 2ND TO 5TH STOREY  
not to scale



A/C - Air Conditioning  
DB - Distribution Board  
F - Fridge  
W/D - Washer cum Dryer  
Services void space  
(excluded from strata area)



All floor area include a/c ledge and balcony.  
Balconies are not to be enclosed except with a balcony screen which has been approved and complies with the Competent Authority's guidelines.  
For an illustration of the approved balcony screen, please refer to diagram annexed hereto as "Annexure"

**Note:** No addition of bedroom and/or convert/use store as another room aside from store by home owner, even with change of door type, due to the lack of window to external for light and ventilation.

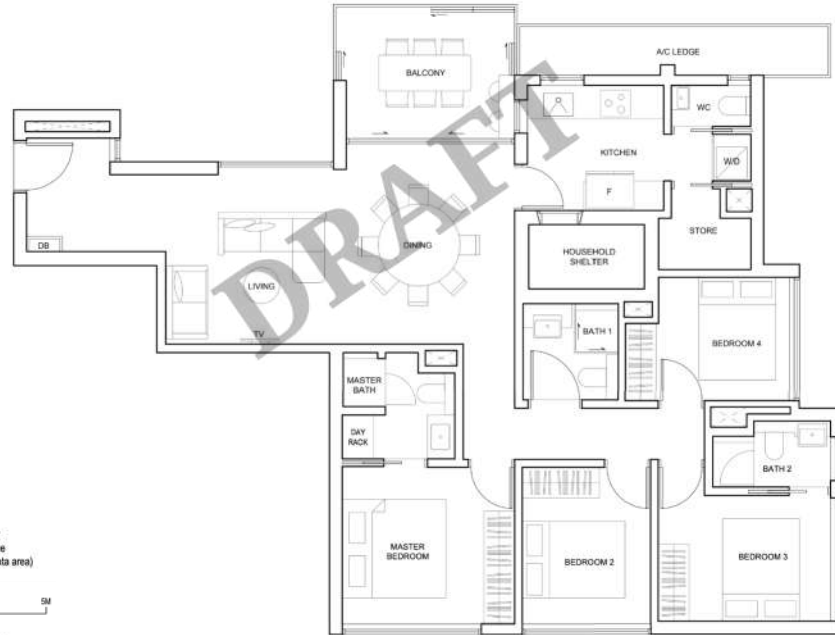
# FARM

## 4 BEDROOM TYPE C2

124 SQM (1335 SQFT)  
UNIT 02-04, 03-04, 04-04



KEY PLAN: 2ND TO 4TH STOREY  
not to scale



A/C - Air Conditioning  
DB - Distribution Board  
F - Fridge  
W/D - Washer cum Dryer  
Services void space (excluded from strata area)



All floor area include a/c ledge and balcony.  
Balconies are not to be enclosed except with a balcony screen which has been approved and complies with the Competent Authority's guidelines.  
For an illustration of the approved balcony screen, please refer to diagram annexed hereto as "Annexure"

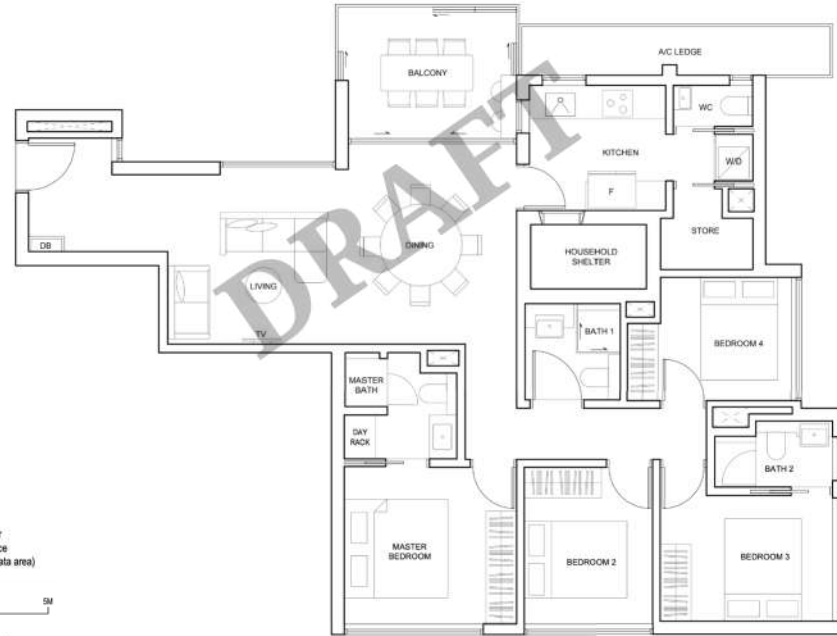
**Note:** No addition of bedroom and/or convert/use store as another room aside from store by home owner, even with change of door type, due to the lack of window to external for light and ventilation.



# FARM

## 4 BEDROOM TYPE C2-A

124 SQM (1335 SQFT)  
UNIT 05-04



A/C - Air Conditioning  
DB - Distribution Board  
F - Fridge  
W/D - Washer cum Dryer  
Services void space (excluded from strata area)



All floor area include a/c ledge and balcony.  
Balconies are not to be enclosed except with a balcony screen which has been approved and complies with the Competent Authority's guidelines.  
For an illustration of the approved balcony screen, please refer to diagram annexed hereto as "Annexure"

**Note:** No addition of bedroom and/or convert/use store as another room aside from store by home owner, even with change of door type, due to the lack of window to external for light and ventilation.

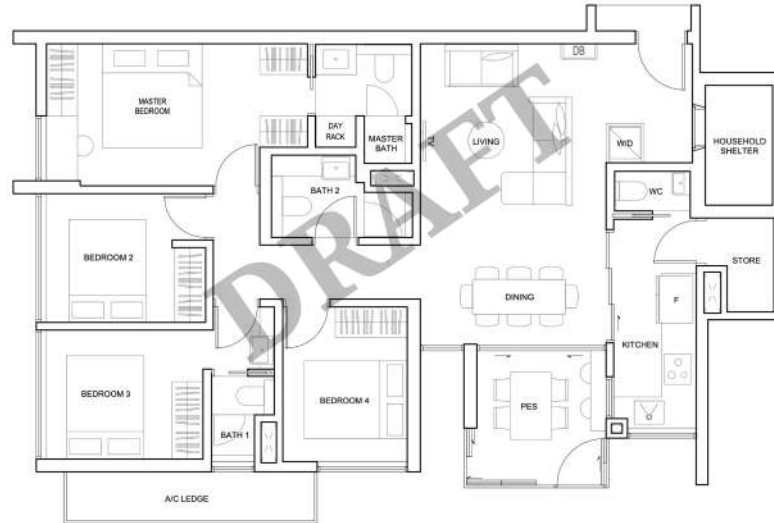
# FARM

## 4 BEDROOM TYPE C3

117 SQM (1259 SQFT)  
UNIT 01-02



KEY PLAN: 1ST STOREY  
not to scale



A/C - Air Conditioning  
DB - Distribution Board  
F - Fridge  
WID - Washer cum Dryer  
Services void space  
(excluded from strata area)



All floor area include a/c ledge and balcony.  
Balconies are not to be enclosed except with a balcony screen which has been approved and complies with the Competent Authority's guidelines.  
For an illustration of the approved balcony screen, please refer to diagram annexed hereto as "Annexure"

**Note:** No addition of bedroom and/or convert/use store as another room aside from store by home owner, even with change of door type, due to the lack of window to external for light and ventilation.