

2 BEDROOM



TYPE B1-G 49 sq m / 527 sq ft
INCLUSIVE OF 4 SQM PES

TOWER	UNIT
52	#01-03, #01-07
56	#01-13*
58	#01-21
62	#01-33, #01-37
64	#01-41, #01-44*, #01-45

TYPE B1 49 sq m / 527 sq ft
INCLUSIVE OF 4 SQM BALCONY

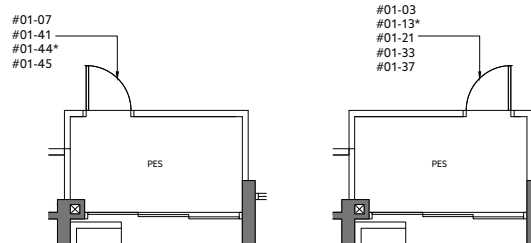
TOWER	UNIT
52	#02-03 to #08-03 #02-07 to #08-07
56	#02-13* to #08-13*
58	#02-21 to #08-21
62	#02-33 to #08-33 #10-33 to #16-33 #02-37 to #08-37 #10-37 to #16-37
64	#02-41 to #08-41 #10-41 to #16-41 #02-44* to #08-44* #10-44* to #16-44* #02-45 to #08-45 #10-45 to #16-45

* MIRROR IMAGE

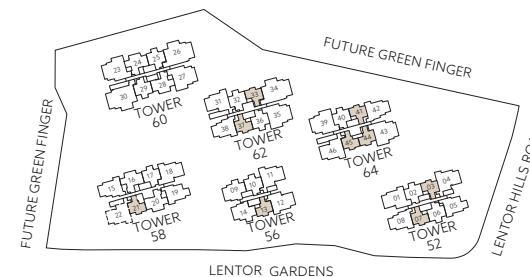
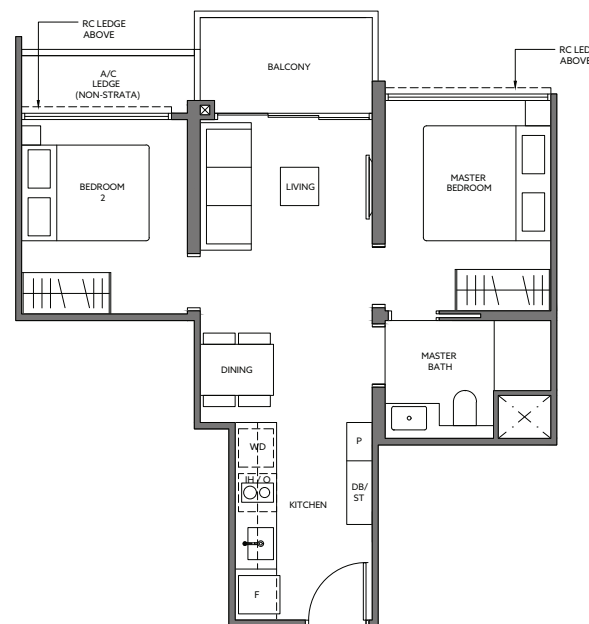
LEGEND (where applicable)

F - Fridge	WD - Washer Dryer
P - Pantry	DB - Distribution Board
O - Oven	ST - Store
IH - Induction Hob	

ALL PLANS ARE SUBJECTED TO AMENDMENTS AS MAY BE APPROVED BY THE RELEVANT AUTHORITIES. FLOOR AREAS ARE APPROXIMATE MEASUREMENTS AND ARE SUBJECT TO FINAL SURVEY. BP APPROVAL NO. A1709-00005-2023-BP01 DATED 31/01/2024



APPLICABLE TO TYPE B1-G



2 BEDROOM



TYPE B2-G 61 sq m / 657 sq ft
INCLUSIVE OF 5 SQM PES

TOWER	UNIT
52	#01-02*, #01-06*
56	#01-10
58	#01-17
60	#01-25, #01-29
62	#01-32*, #01-36*
64	#01-40*

TYPE B2 61 sq m / 657 sq ft
INCLUSIVE OF 5 SQM BALCONY

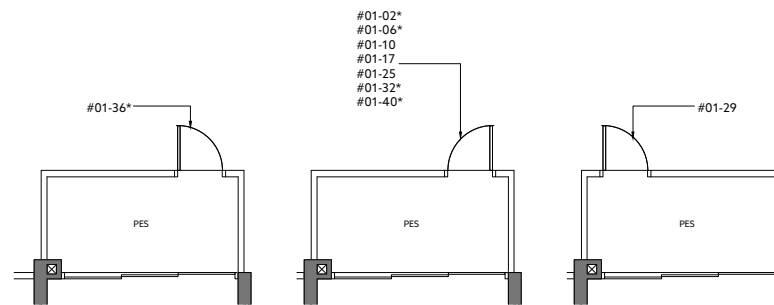
TOWER	UNIT
52	#02-02* to #08-02* #02-06* to #08-06*
56	#02-10 to #08-10
58	#02-17 to #08-17
60	#02-25 to #08-25 #10-25 to #16-25 #02-29 to #08-29 #10-29 to #16-29
62	#02-32* to #08-32* #10-32* to #16-32* #02-36* to #08-36* #10-36* to #16-36*
64	#02-40* to #08-40* #10-40* to #16-40*

* MIRROR IMAGE

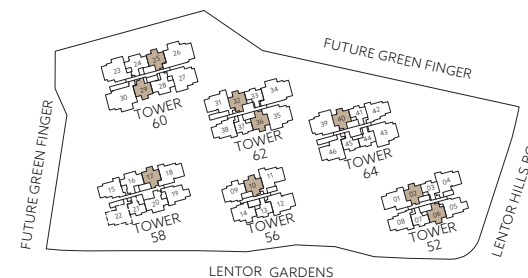
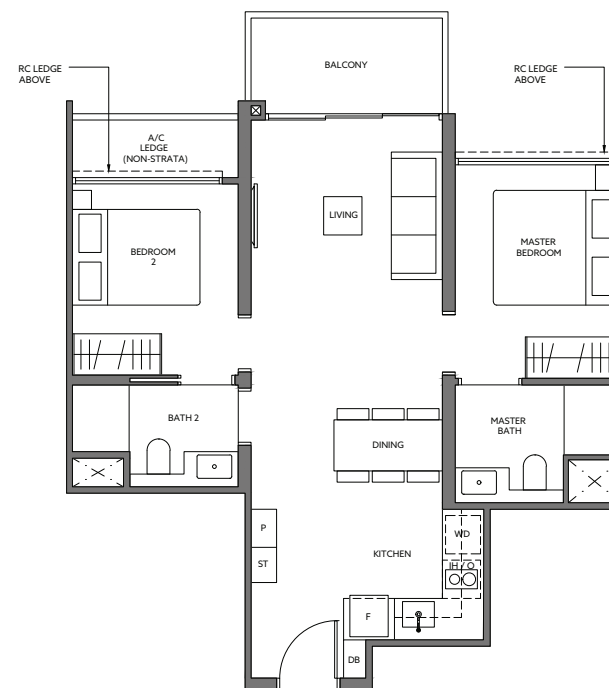
LEGEND (where applicable)

F - Fridge	WD - Washer Dryer
P - Pantry	DB - Distribution Board
O - Oven	ST - Store
IH - Induction Hob	

ALL PLANS ARE SUBJECTED TO AMENDMENTS AS MAY BE APPROVED BY THE RELEVANT AUTHORITIES.
FLOOR AREAS ARE APPROXIMATE MEASUREMENTS AND ARE SUBJECT TO FINAL SURVEY.
BP APPROVAL NO. A1709-00005-2023-BP01 DATED 31/01/2024



APPLICABLE TO TYPE B2-G



3 BEDROOM



TYPE C1-G 73 sq m / 786 sq ft
INCLUSIVE OF 5 SQM PES

TOWER	UNIT
58	#01-16, #01-20
60	#01-24, #01-28

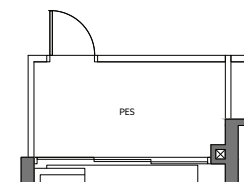
TYPE C1 73 sq m / 786 sq ft
INCLUSIVE OF 5 SQM BALCONY

TOWER	UNIT
58	#02-16 to #08-16 #02-20 to #08-20
60	#02-24 to #08-24 #10-24 to #16-24 #02-28 to #08-28 #10-28 to #16-28

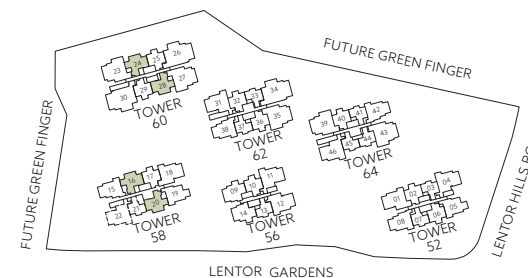
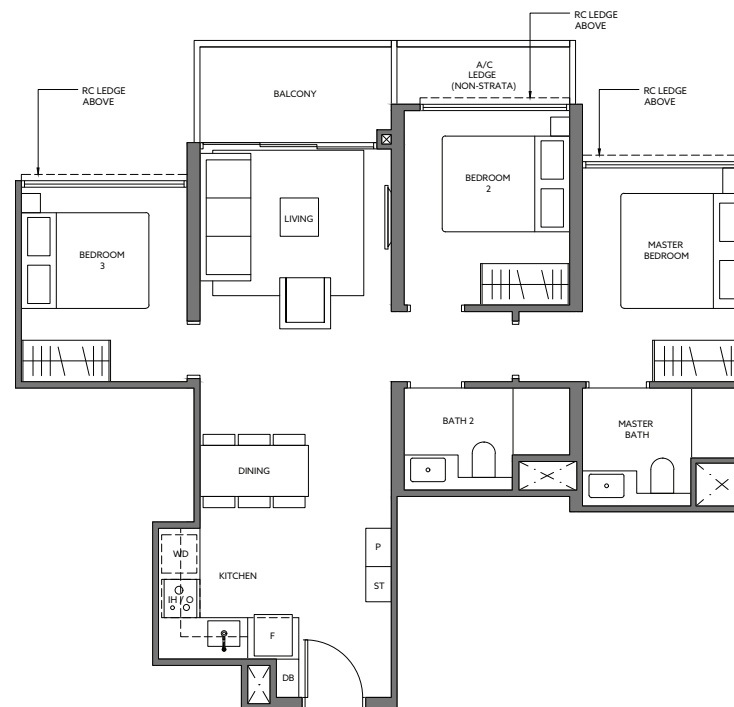
LEGEND (where applicable)

F - Fridge	WD - Washer Dryer
P - Pantry	DB - Distribution Board
O - Oven	ST - Store
IH - Induction Hob	

ALL PLANS ARE SUBJECTED TO AMENDMENTS AS MAY BE APPROVED BY THE RELEVANT AUTHORITIES.
FLOOR AREAS ARE APPROXIMATE MEASUREMENTS AND ARE SUBJECT TO FINAL SURVEY.
BP APPROVAL NO. A1709-00005-2023-BP01 DATED 31/01/2024



APPLICABLE TO TYPE C1-G



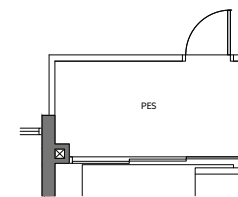
3 BEDROOM

TYPE C2-G 76 sq m / 818 sq ft
INCLUSIVE OF 5 SQM PES

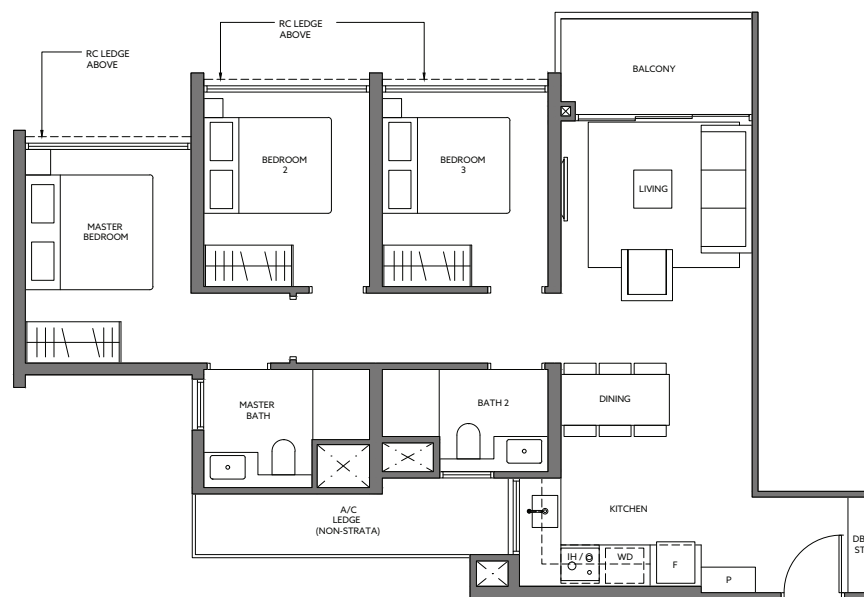
TOWER	UNIT
52	#01-05
58	#01-19

TYPE C2 76 sq m / 818 sq ft
INCLUSIVE OF 5 SQM BALCONY

TOWER	UNIT
52	#02-05 to #08-05
58	#02-19 to #08-19



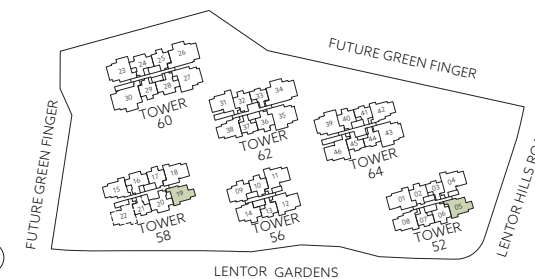
APPLICABLE TO TYPE C2-G



LEGEND (where applicable)

F - Fridge	WD - Washer Dryer
P - Pantry	DB - Distribution Board
O - Oven	ST - Store
IH - Induction Hob	

ALL PLANS ARE SUBJECTED TO AMENDMENTS AS MAY BE APPROVED BY THE RELEVANT AUTHORITIES. FLOOR AREAS ARE APPROXIMATE MEASUREMENTS AND ARE SUBJECT TO FINAL SURVEY. BP APPROVAL NO. A1709-00005-2023-BP01 DATED 31/01/2024



3 BEDROOM



TYPE C3-G 80 sq m / 861 sq ft
INCLUSIVE OF 5 SQM PES

TOWER UNIT
56 #01-09, #01-14*

TYPE C3 80 sq m / 861 sq ft
INCLUSIVE OF 5 SQM BALCONY

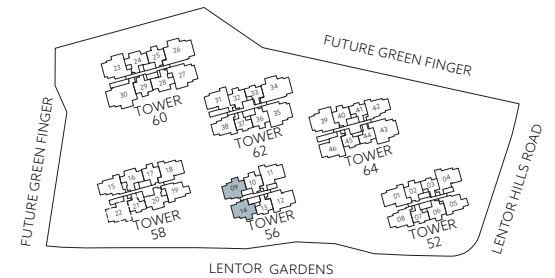
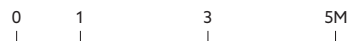
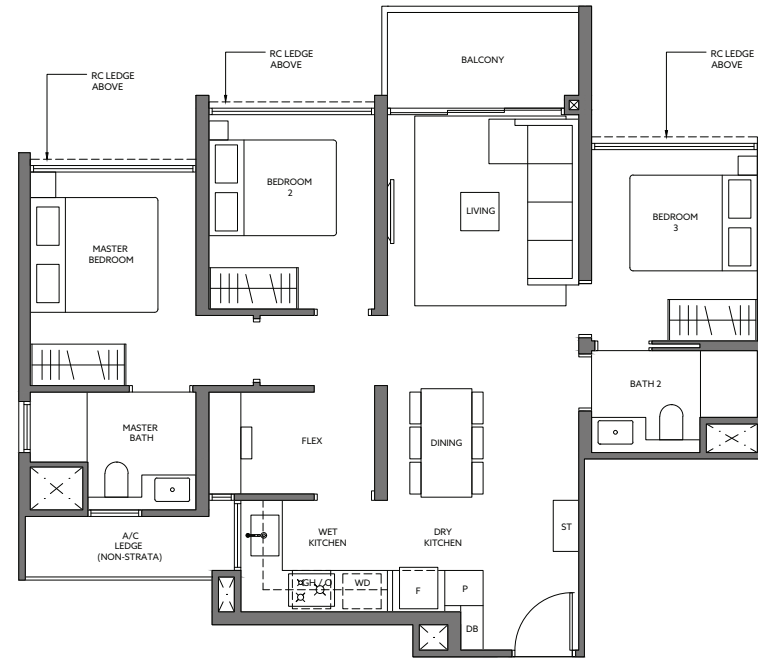
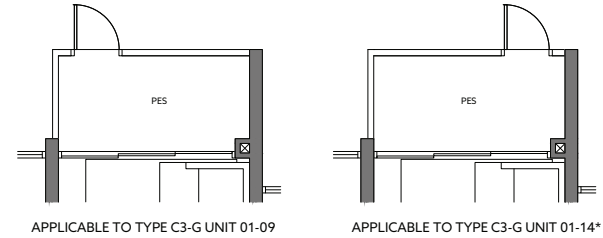
TOWER UNIT
56 #02-09 to #08-09
#02-14* to #08-14*

* MIRROR IMAGE

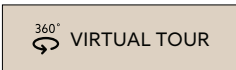
LEGEND (where applicable)

F - Fridge	WD - Washer Dryer
P - Pantry	DB - Distribution Board
O - Oven	ST - Store
GH - Gas Hob	

ALL PLANS ARE SUBJECTED TO AMENDMENTS AS MAY BE APPROVED BY THE RELEVANT AUTHORITIES. FLOOR AREAS ARE APPROXIMATE MEASUREMENTS AND ARE SUBJECT TO FINAL SURVEY. BP APPROVAL NO. A1709-00005-2023-BP01 DATED 31/01/2024



3 BEDROOM

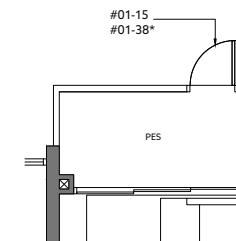


TYPE C4-G 84 sq m / 904 sq ft
INCLUSIVE OF 5 SQM PES

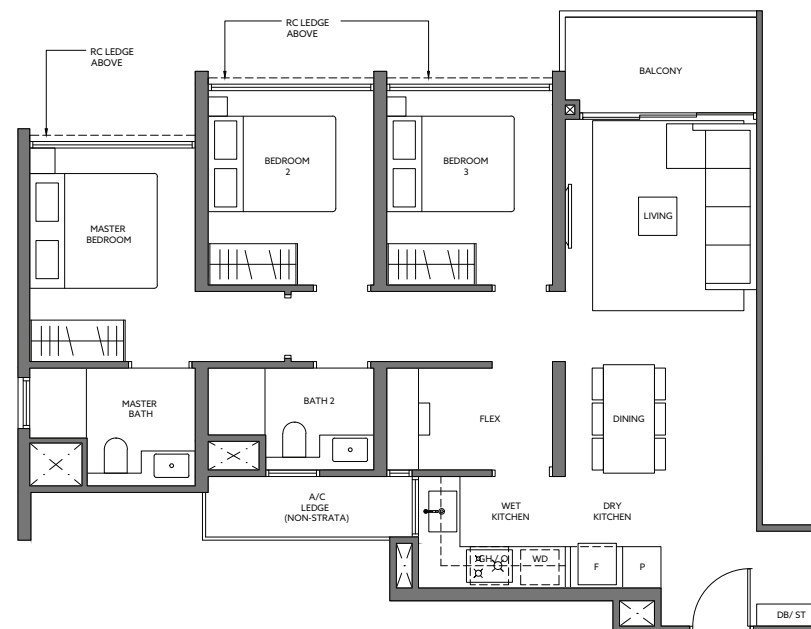
TOWER	UNIT
58	#01-15
62	#01-38*

TYPE C4 84 sq m / 904 sq ft
INCLUSIVE OF 5 SQM BALCONY

TOWER	UNIT
58	#02-15 to #08-15
62	#02-38* to #08-38* #10-38* to #16-38*



APPLICABLE TO TYPE C4-G

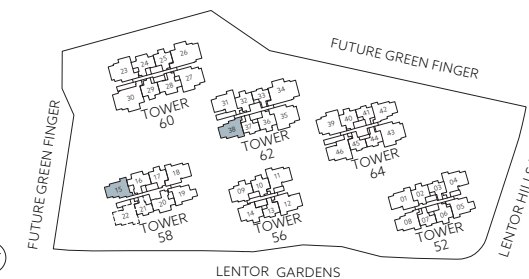


* MIRROR IMAGE

LEGEND (where applicable)

F - Fridge	WD - Washer Dryer
P - Pantry	DB - Distribution Board
O - Oven	ST - Store
GH - Gas Hob	

ALL PLANS ARE SUBJECTED TO AMENDMENTS AS MAY BE APPROVED BY THE RELEVANT AUTHORITIES. FLOOR AREAS ARE APPROXIMATE MEASUREMENTS AND ARE SUBJECT TO FINAL SURVEY. BP APPROVAL NO. A1709-00005-2023-BP01 DATED 31/01/2024



3 BEDROOM

TYPE C5-G 84 sq m / 904 sq ft
INCLUSIVE OF 5 SQM PES

TOWER	UNIT
52	#01-08
64	#01-42

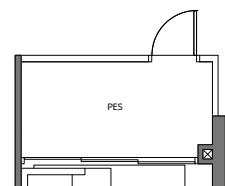
TYPE C5 84 sq m / 904 sq ft
INCLUSIVE OF 5 SQM BALCONY

TOWER	UNIT
52	#02-08 to #08-08
64	#02-42 to #08-42 #10-42 to #16-42

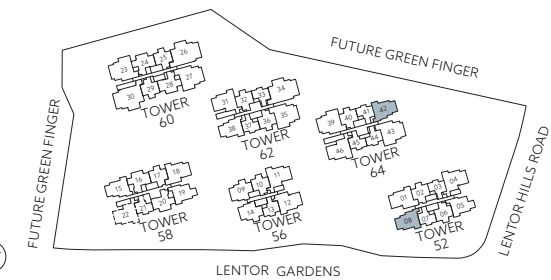
LEGEND (where applicable)

F - Fridge	WD - Washer Dryer
P - Pantry	DB - Distribution Board
O - Oven	ST - Store
GH - Gas Hob	

ALL PLANS ARE SUBJECTED TO AMENDMENTS AS MAY BE APPROVED BY THE RELEVANT AUTHORITIES. FLOOR AREAS ARE APPROXIMATE MEASUREMENTS AND ARE SUBJECT TO FINAL SURVEY. BP APPROVAL NO. A1709-00005-2023-BP01 DATED 31/01/2024



APPLICABLE TO TYPE C5-G



3 BEDROOM

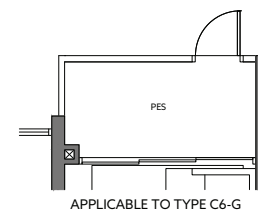


TYPE C6-G 92 sq m / 990 sq ft
INCLUSIVE OF 5 SQM PES

TOWER	UNIT
56	#01-12

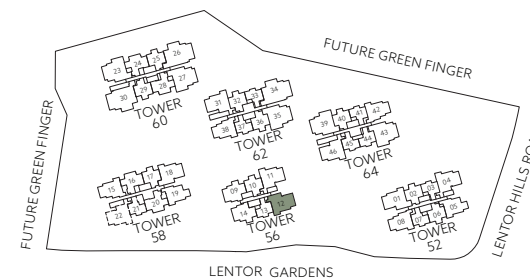
TYPE C6 92 sq m / 990 sq ft
INCLUSIVE OF 5 SQM BALCONY

TOWER	UNIT
56	#02-12 to #08-12



- LEGEND** (where applicable)
- F - Fridge
 - P - Pantry
 - O - Oven
 - GH - Gas Hob
 - WD - Washer Dryer
 - DB - Distribution Board
 - ST - Store

ALL PLANS ARE SUBJECTED TO AMENDMENTS AS MAY BE APPROVED BY THE RELEVANT AUTHORITIES. FLOOR AREAS ARE APPROXIMATE MEASUREMENTS AND ARE SUBJECT TO FINAL SURVEY. BP APPROVAL NO. A1709-00005-2023-BP01 DATED 31/01/2024



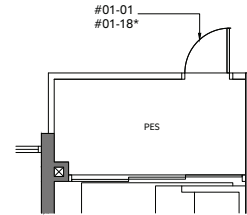
3 BEDROOM

TYPE C7-G 94 sq m / 1012 sq ft
INCLUSIVE OF 5 SQM PES

TOWER	UNIT
52	#01-01
58	#01-18*

TYPE C7 94 sq m / 1012 sq ft
INCLUSIVE OF 5 SQM BALCONY

TOWER	UNIT
52	#02-01 to #08-01
58	#02-18* to #08-18*



APPLICABLE TO TYPE C7-G

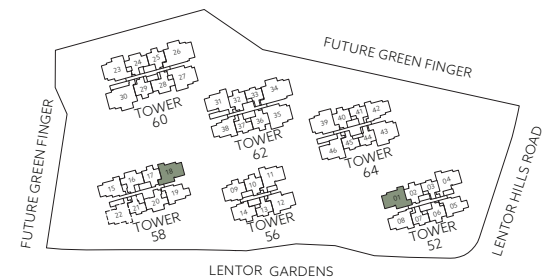


* MIRROR IMAGE

LEGEND (where applicable)

F - Fridge	WD - Washer Dryer
P - Pantry	DB - Distribution Board
O - Oven	ST - Store
GH - Gas Hob	

ALL PLANS ARE SUBJECTED TO AMENDMENTS AS MAY BE APPROVED BY THE RELEVANT AUTHORITIES. FLOOR AREAS ARE APPROXIMATE MEASUREMENTS AND ARE SUBJECT TO FINAL SURVEY. BP APPROVAL NO. A1709-00005-2023-BP01 DATED 31/01/2024



3 BEDROOM

TYPE C8-G 95 sq m / 1023 sq ft
INCLUSIVE OF 5 SQM PES

TOWER	UNIT
52	#01-04
56	#01-11
62	#01-31*
64	#01-46

TYPE C8 95 sq m / 1023 sq ft
INCLUSIVE OF 5 SQM BALCONY

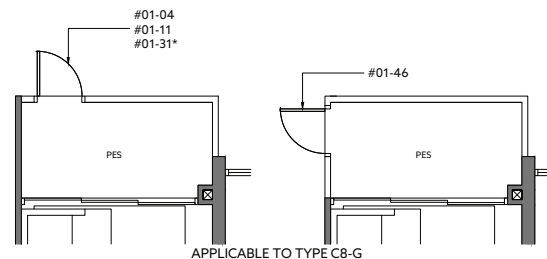
TOWER	UNIT
52	#02-04 to #08-04
56	#02-11 to #08-11
58	#04-22 to #08-22
62	#02-31* to #08-31* #10-31* to #16-31*
64	#02-46 to #08-46 #10-46 to #16-46

* MIRROR IMAGE

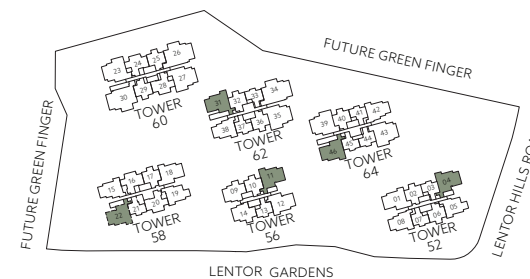
LEGEND (where applicable)

F - Fridge	WD - Washer Dryer
P - Pantry	DB - Distribution Board
O - Oven	ST - Store
GH - Gas Hob	

ALL PLANS ARE SUBJECTED TO AMENDMENTS AS MAY BE APPROVED BY THE RELEVANT AUTHORITIES.
FLOOR AREAS ARE APPROXIMATE MEASUREMENTS AND ARE SUBJECT TO FINAL SURVEY.
BP APPROVAL NO. A1709-00005-2023-BP01 DATED 31/01/2024



APPLICABLE TO TYPE C8-G



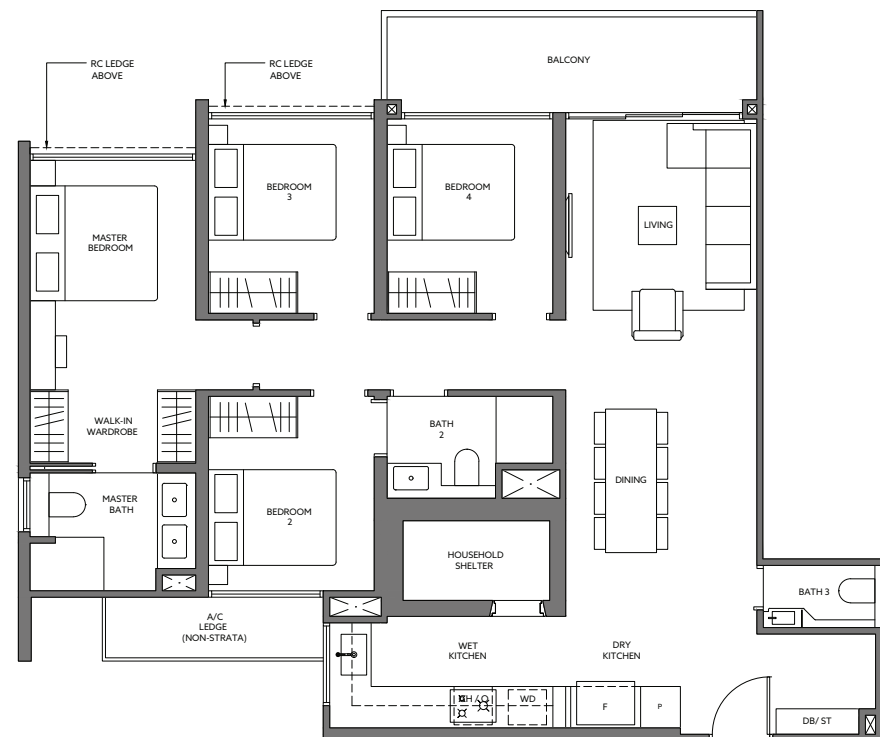
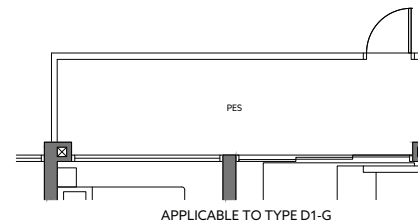
4 BEDROOM

TYPE D1-G 114 sq m / 1227 sq ft
INCLUSIVE OF 9 SQM PES

TOWER	UNIT
60	#01-23
64	#01-39

TYPE D1 114 sq m / 1227 sq ft
INCLUSIVE OF 9 SQM BALCONY

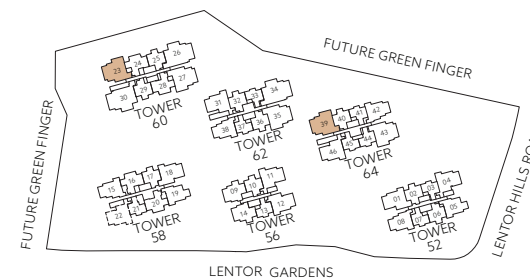
TOWER	UNIT
60	#02-23 to #08-23 #10-23 to #16-23
64	#02-39 to #08-39 #10-39 to #16-39



LEGEND (where applicable)

F - Fridge	WD - Washer Dryer
P - Pantry	DB - Distribution Board
O - Oven	ST - Store
GH - Gas Hob	

ALL PLANS ARE SUBJECTED TO AMENDMENTS AS MAY BE APPROVED BY THE RELEVANT AUTHORITIES. FLOOR AREAS ARE APPROXIMATE MEASUREMENTS AND ARE SUBJECT TO FINAL SURVEY. BP APPROVAL NO. A1709-00005-2023-BP01 DATED 31/01/2024



4 BEDROOM



TYPE D2-G 114 sq m / 1227 sq ft
INCLUSIVE OF 9 SQM PES

TOWER	UNIT
60	#01-27
62	#01-35
64	#01-43

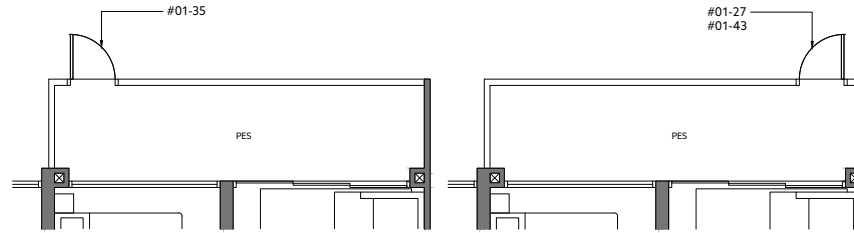
TYPE D2 114 sq m / 1227 sq ft
INCLUSIVE OF 9 SQM BALCONY

TOWER	UNIT
60	#02-27 to #08-27 #10-27 to #16-27
62	#02-35 to #08-35 #10-35 to #16-35
64	#02-43 to #08-43 #10-43 to #16-43

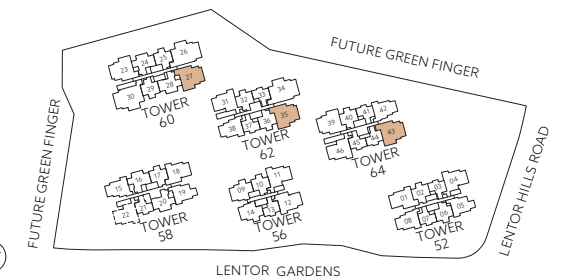
LEGEND (where applicable)

F - Fridge	WD - Washer Dryer
P - Pantry	DB - Distribution Board
O - Oven	ST - Store
GH - Gas Hob	

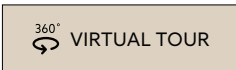
ALL PLANS ARE SUBJECTED TO AMENDMENTS AS MAY BE APPROVED BY THE RELEVANT AUTHORITIES. FLOOR AREAS ARE APPROXIMATE MEASUREMENTS AND ARE SUBJECT TO FINAL SURVEY. BP APPROVAL NO. A1709-00005-2023-BP01 DATED 31/01/2024



APPLICABLE TO TYPE D2-G



5 BEDROOM



TYPE E1-G 138 sq m / 1485 sq ft
INCLUSIVE OF 11 SQM PES

TOWER	UNIT
60	#01-26
62	#01-34

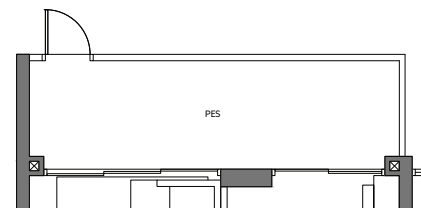
TYPE E1 138 sq m / 1485 sq ft
INCLUSIVE OF 11 SQM BALCONY

TOWER	UNIT
60	#02-26 to #08-26 #10-26 to #16-26
62	#02-34 to #08-34 #10-34 to #16-34

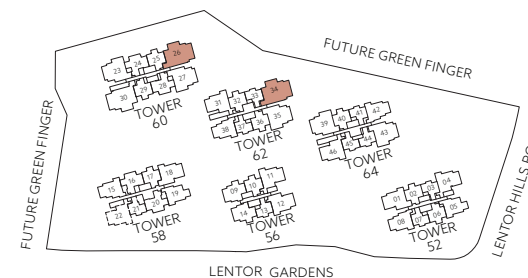
LEGEND (where applicable)

F - Fridge	WD - Washer Dryer
P - Pantry	DB - Distribution Board
O - Oven	ST - Store
GH - Gas Hob	

ALL PLANS ARE SUBJECTED TO AMENDMENTS AS MAY BE APPROVED BY THE RELEVANT AUTHORITIES. FLOOR AREAS ARE APPROXIMATE MEASUREMENTS AND ARE SUBJECT TO FINAL SURVEY. BP APPROVAL NO. A1709-00005-2023-BP01 DATED 31/01/2024



APPLICABLE TO TYPE E1-G



LENTOR GARDENS

5 BEDROOM



TYPE E2-G 140 sq m / 1507 sq ft
INCLUSIVE OF 11 SQM PES

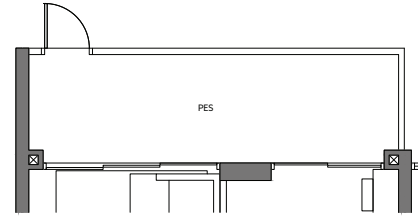
TOWER UNIT
60 #01-30

TYPE E2 140 sq m / 1507 sq ft
INCLUSIVE OF 11 SQM BALCONY

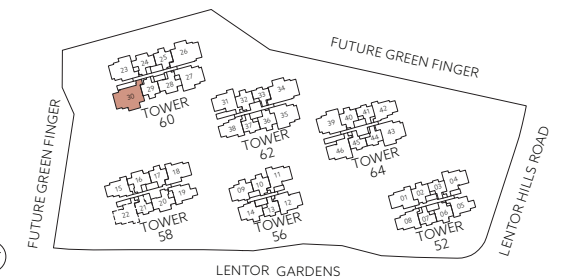
TOWER UNIT
60 #02-30 to #08-30 #10-30 to #16-30

- LEGEND** (where applicable)
- F - Fridge
 - P - Pantry
 - O - Oven
 - GH - Gas Hob
 - WD - Washer Dryer
 - DB - Distribution Board
 - ST - Store

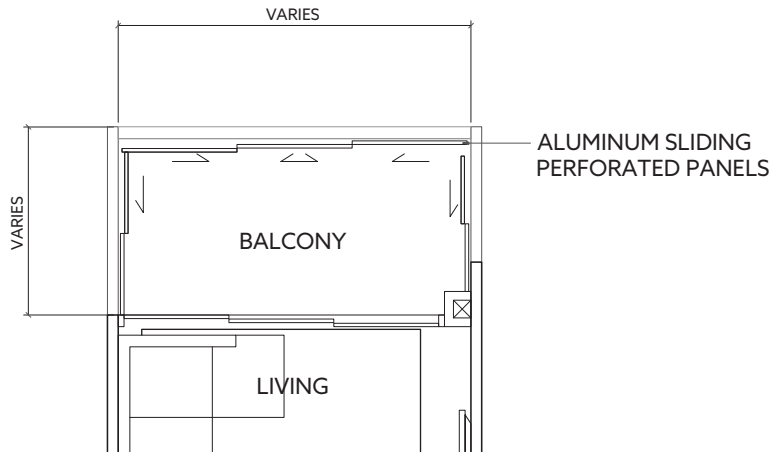
ALL PLANS ARE SUBJECTED TO AMENDMENTS AS MAY BE APPROVED BY THE RELEVANT AUTHORITIES. FLOOR AREAS ARE APPROXIMATE MEASUREMENTS AND ARE SUBJECT TO FINAL SURVEY. BP APPROVAL NO. A1709-00005-2023-BP01 DATED 31/01/2024



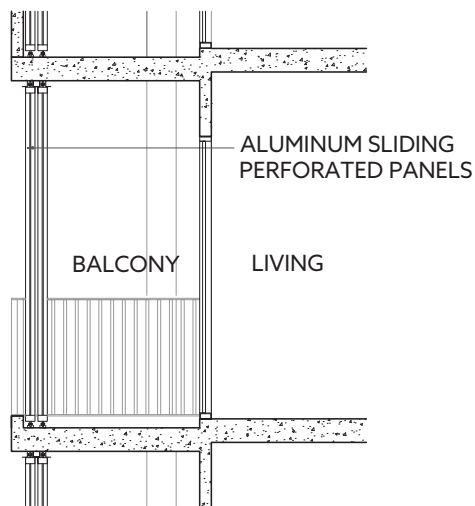
APPLICABLE TO TYPE E2-G



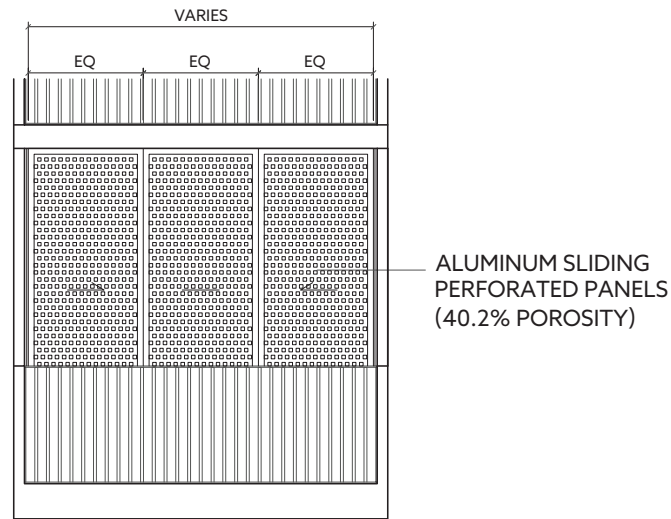
APPROVED BALCONY SCREEN DESIGN



TYPICAL SLIDING BALCONY SCREEN - PLAN



TYPICAL SLIDING BALCONY SCREEN - SECTION



TYPICAL SLIDING BALCONY SCREEN (CLOSED) - ELEVATION

NOTES:

1. BALCONY SCREEN IS NOT PROVIDED FOR THIS DEVELOPMENT.
2. THE BALCONY SHALL NOT BE ENCLOSED UNLESS WITH THE SCREEN APPROVED BY THE RELEVANT AUTHORITIES.
3. FINAL SELECTION OF MATERIAL, COLOUR AND DETAILING OF THE SCREEN IS SUBJECT TO MCST APPROVAL.
4. APPROVAL FROM THE VENDOR OR THE MANAGEMENT CORPORATION (WHEN FORMED) IS REQUIRED BEFORE INSTALLATION.
5. OWNER MAY OPT TO PRE-INSTALL THE SCREEN.
6. ALL INSTALLATION FEES TO BE BORNE BY THE OWNER.
7. MEASUREMENTS ARE APPROXIMATE ONLY AND SUBJECT TO FINAL SURVEY.