

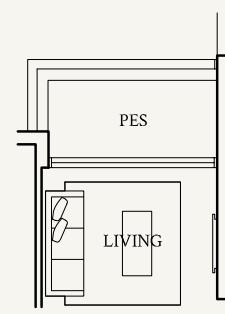
3-Bedroom

TYPE C1
92 sqm | 990 sqft

#02-04 to #05-04
#02-11 to #05-11
#02-33 to #05-33
#02-24* to #05-24*

TYPE C1(p1)
92 sqm | 990 sqft

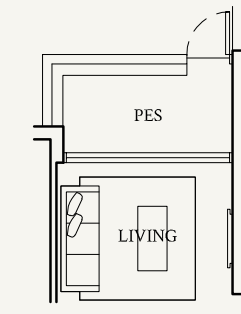
#01-04, #01-33
#01-24*



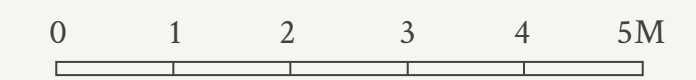
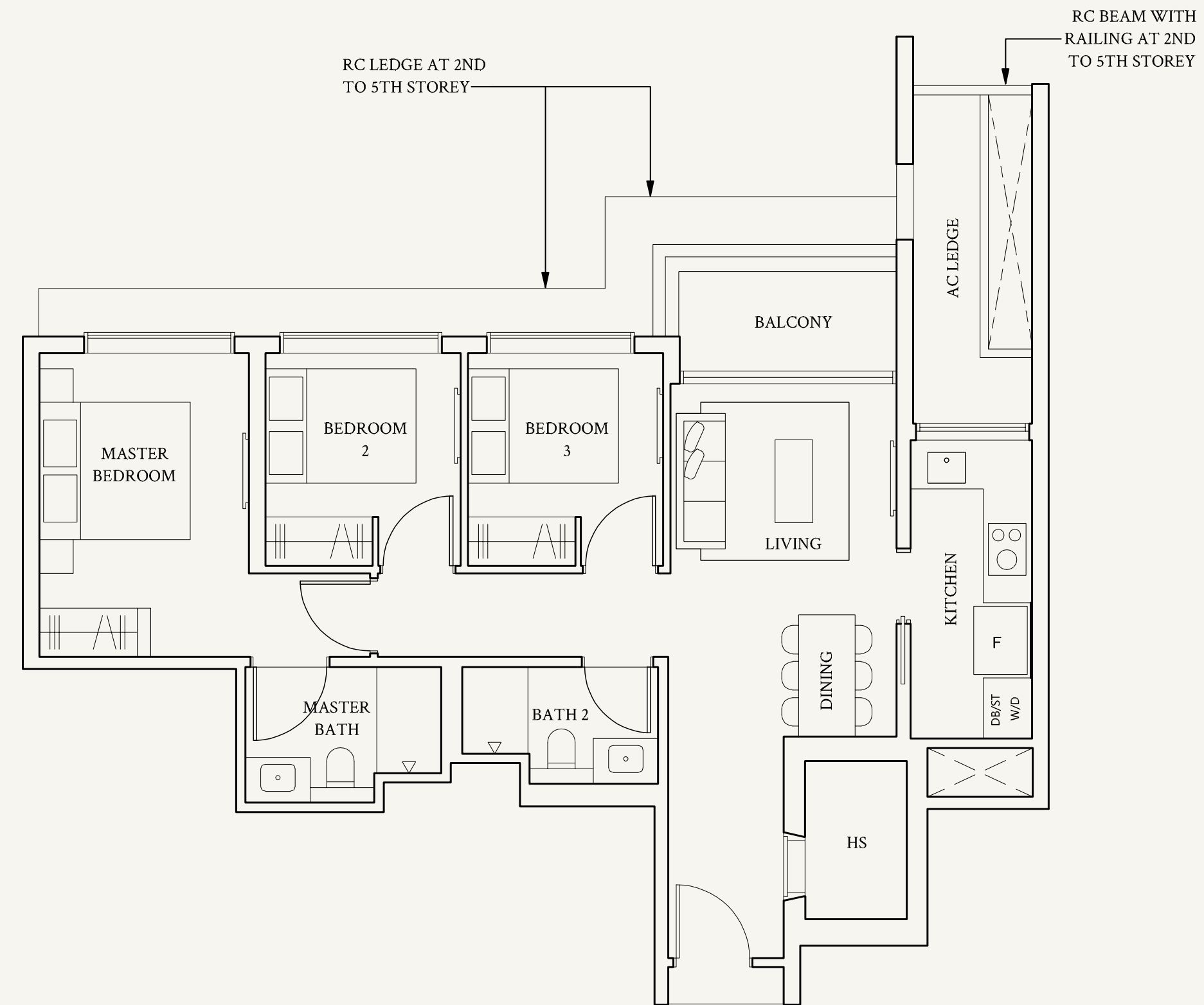
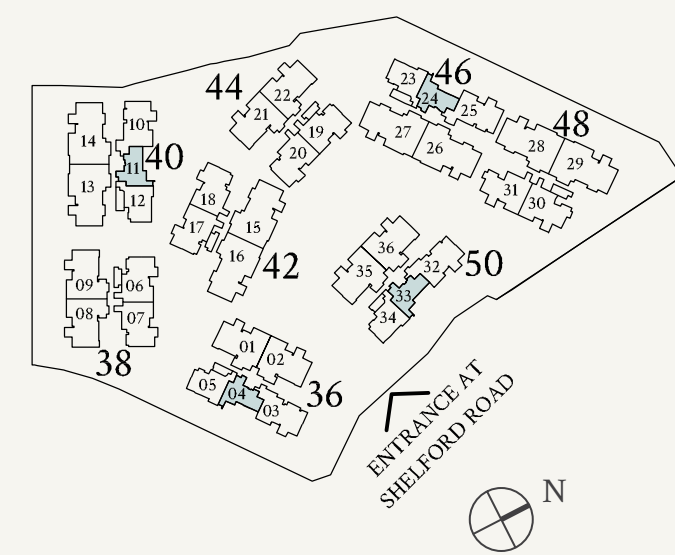
Not to scale

TYPE C1(p2)
92 sqm | 990 sqft

#01-11



Not to scale



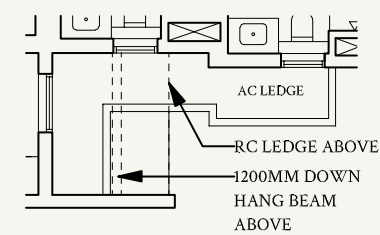
Areas include AC ledge, balcony, private enclosed space (PES) or private roof terrace (PRT), where applicable. All RC ledges are excluded from strata area and non-load bearing. The plans are subjected to change as may be required by relevant authorities. All areas and measurements stated herein as approximate and subject to final survey.

*Mirrored unit

3-Bedroom

TYPE C2
108 sqm | 1163 sqft

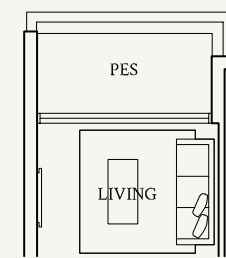
- #02-05 to #05-05
- #02-12 to #05-12
- #02-34 to #05-34
- #02-23* to #05-23*
- #05-05, #05-12, #05-34
- #05-23*



Not to scale

TYPE C2(p1)
108 sqm | 1163 sqft

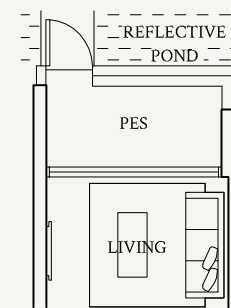
- #01-05, #01-34
- #01-23*



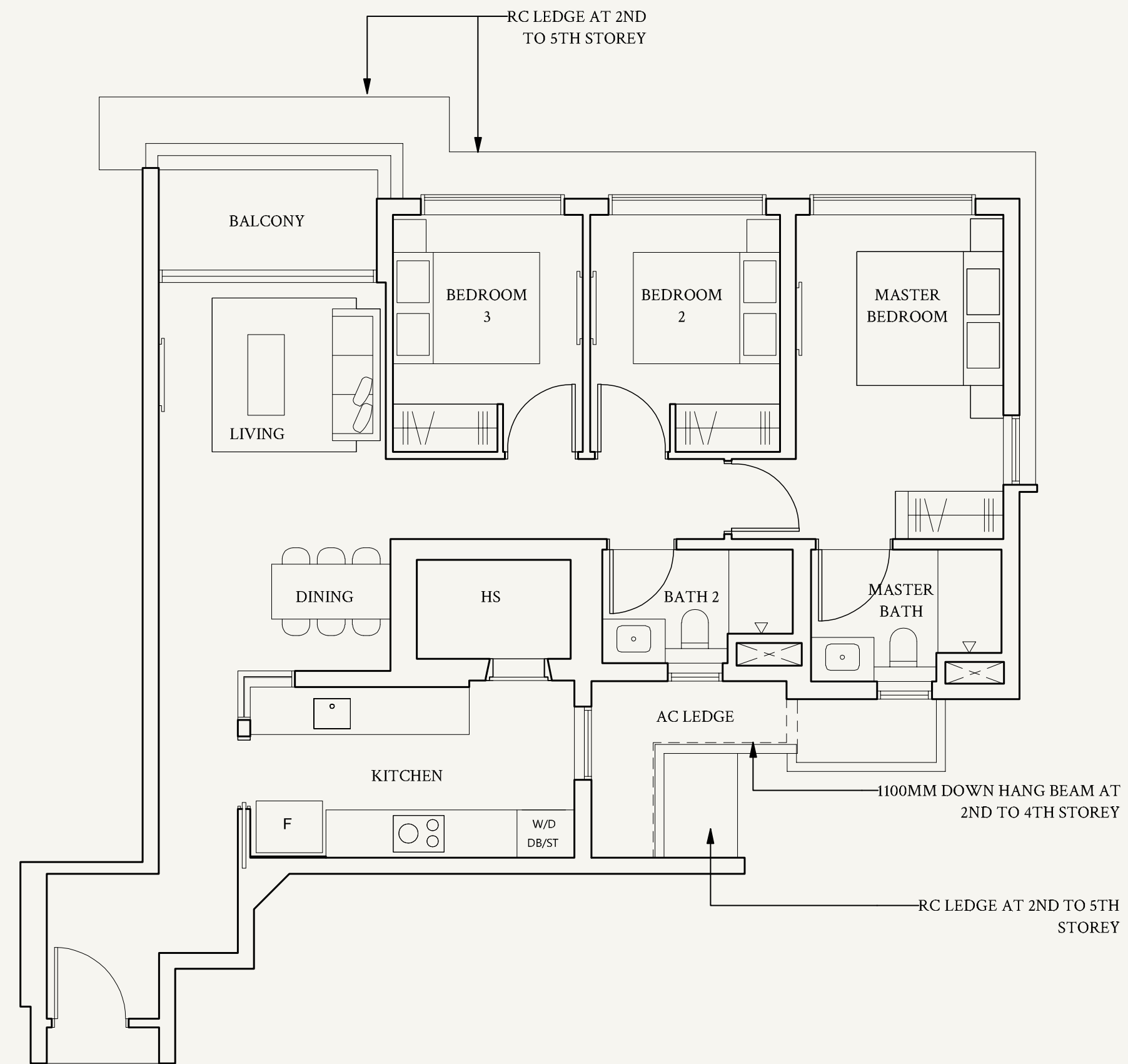
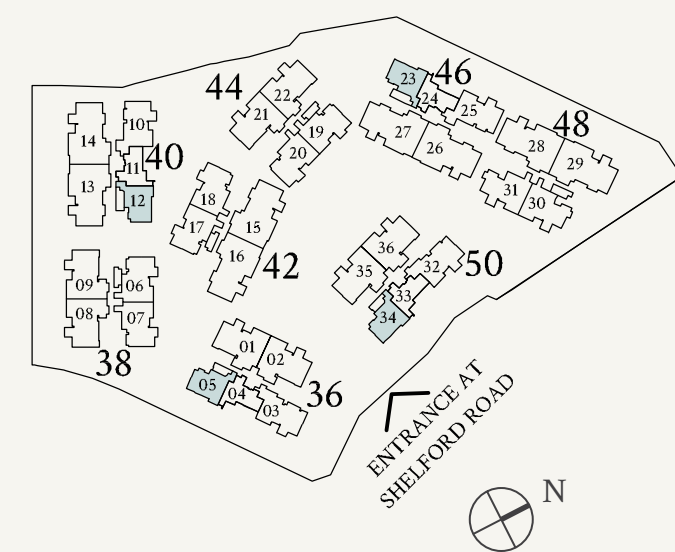
Not to scale

TYPE C2(p2)
108 sqm | 1163 sqft

- #01-12



Not to scale



Areas include AC ledge, balcony, private enclosed space (PES) or private roof terrace (PRT), where applicable. All RC ledges are excluded from strata area and non-load bearing. The plans are subjected to change as may be required by relevant authorities. All areas and measurements stated herein as approximate and subject to final survey.

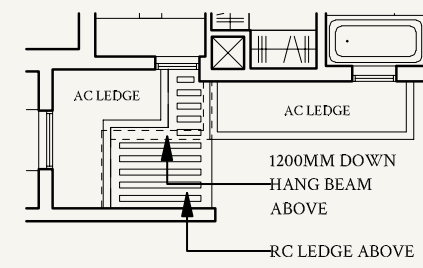
*Mirrored unit

3-Bedroom + Study

TYPE CS1
143 sqm | 1539 sqft

#02-07 to #05-07
#02-18 to #05-18
#02-20 to #05-20

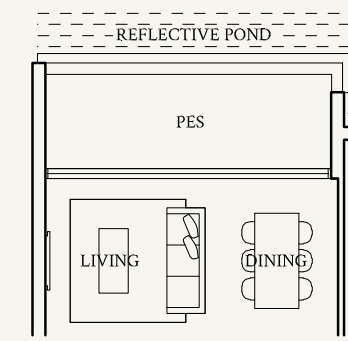
#05-07, #05-18, #05-20



Not to scale

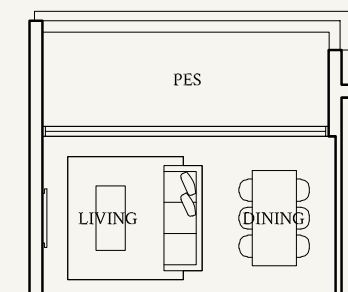
TYPE CS1(p1)
143 sqm | 1539 sqft

#01-07



Not to scale

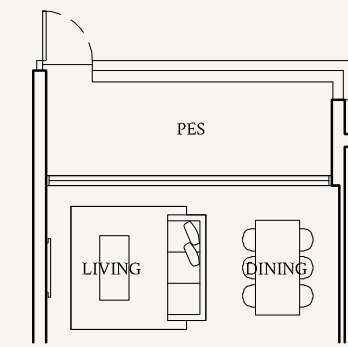
#01-18



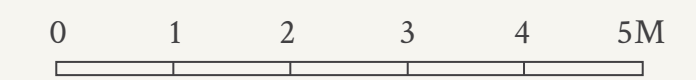
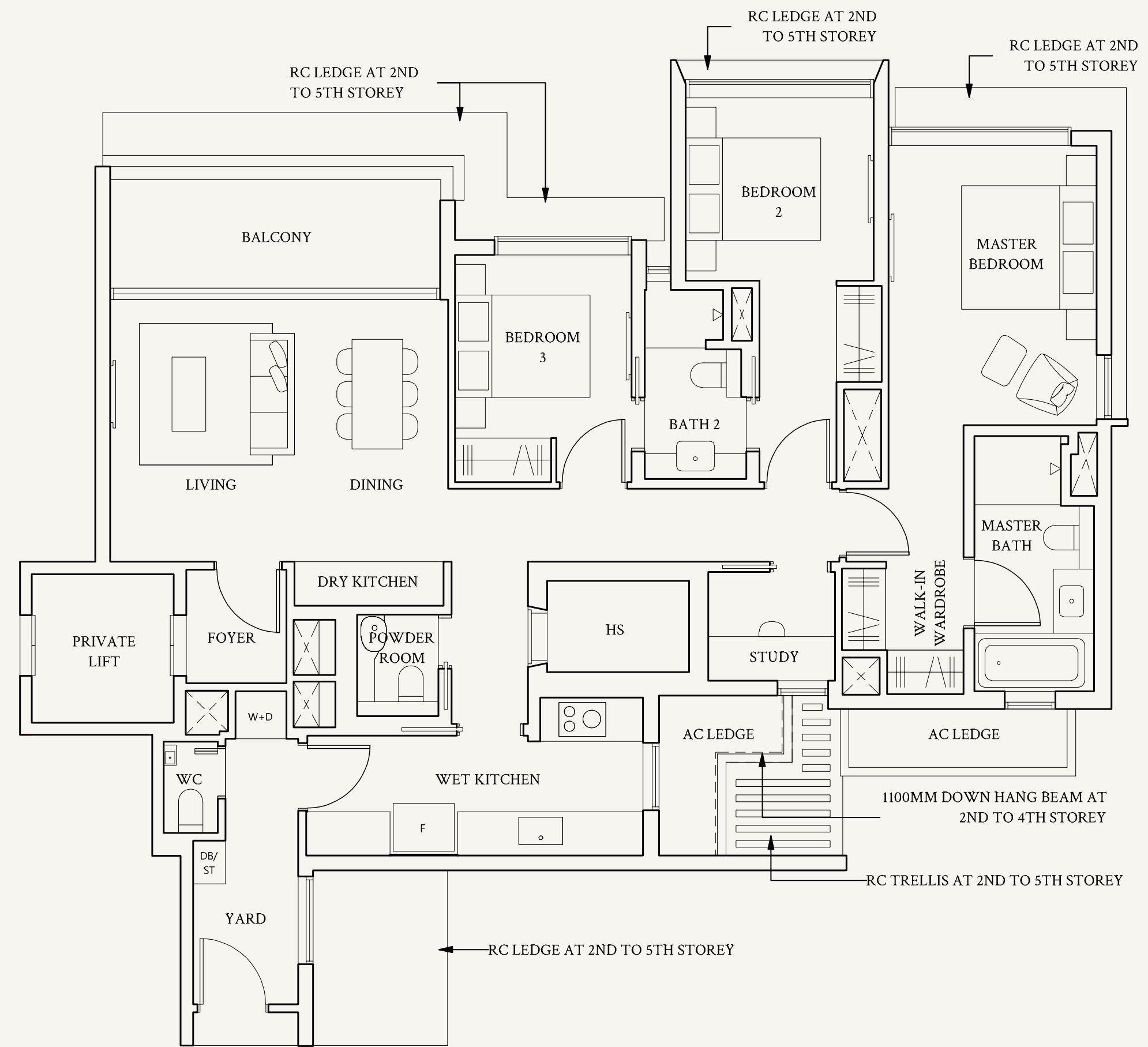
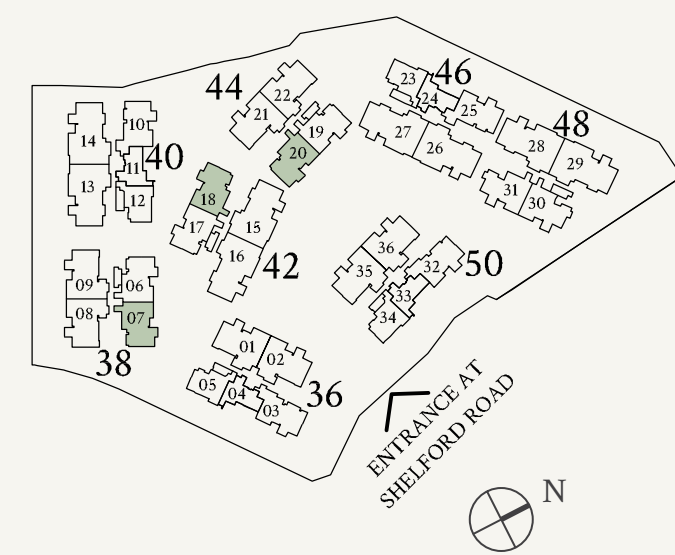
Not to scale

TYPE CS1(p2)
143 sqm | 1539 sqft

#01-20



Not to scale



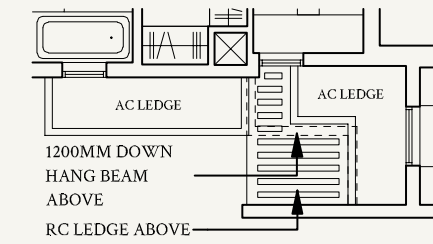
Areas include AC ledge, balcony, private enclosed space (PES) or private roof terrace (PRT), where applicable. All RC ledges are excluded from strata area and non-load bearing. The plans are subjected to change as may be required by relevant authorities. All areas and measurements stated herein as approximate and subject to final survey.

3-Bedroom + Study

TYPE CS2
143 sqm | 1539 sqft

#02-06 to #05-06
#02-17 to #05-17
#02-19 to #05-19

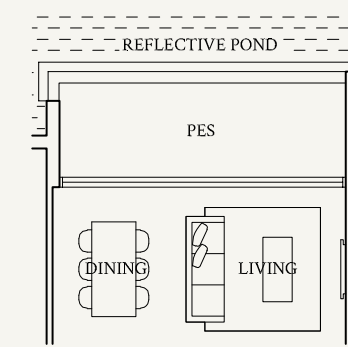
#05-06, #05-17, #05-19



Not to scale

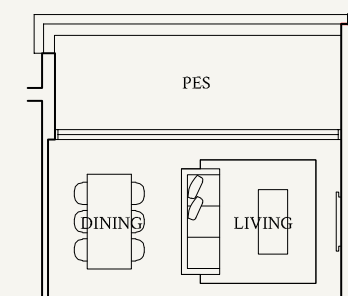
TYPE CS2(p1)
143 sqm | 1539 sqft

#01-06



Not to scale

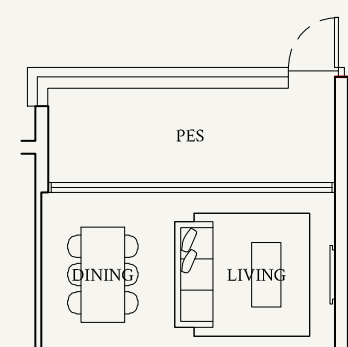
#01-17



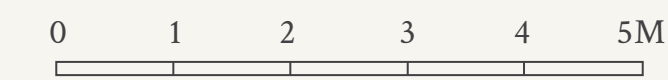
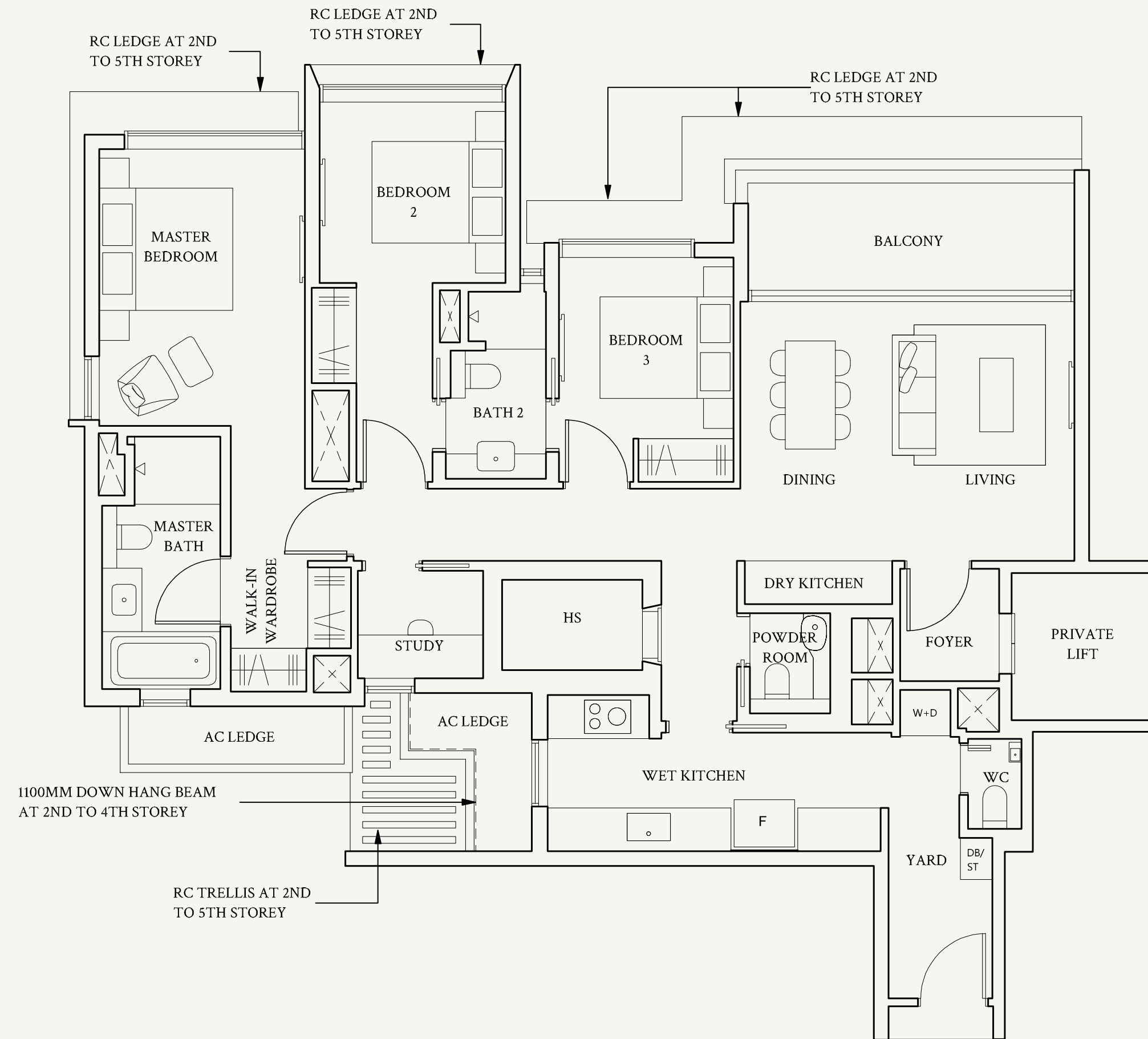
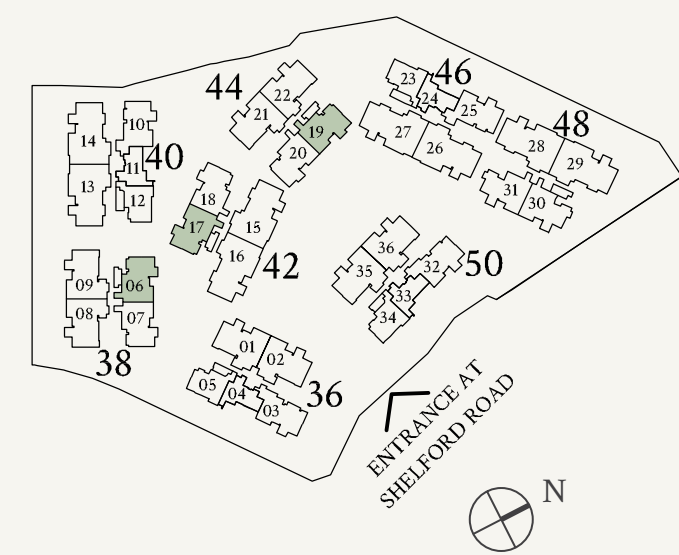
Not to scale

TYPE CS2(p2)
143 sqm | 1539 sqft

#01-19



Not to scale



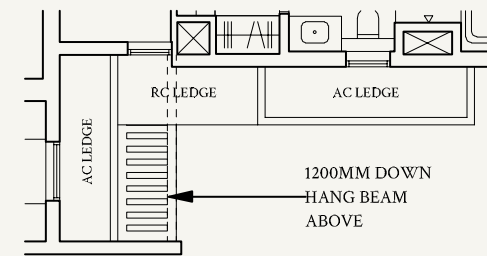
Areas include AC ledge, balcony, private enclosed space (PES) or private roof terrace (PRT), where applicable. All RC ledges are excluded from strata area and non-load bearing. The plans are subjected to change as may be required by relevant authorities. All areas and measurements stated herein as approximate and subject to final survey.

3-Bedroom + Study

TYPE CS3
143 sqm | 1539 sqft

#02-31 to #05-31

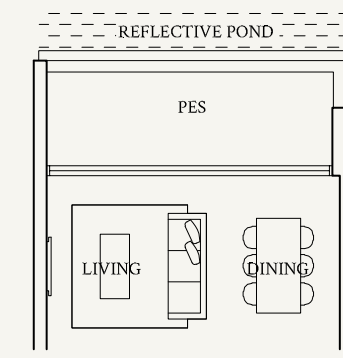
#05-31



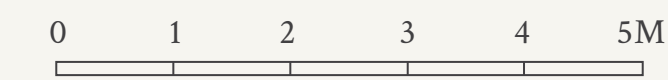
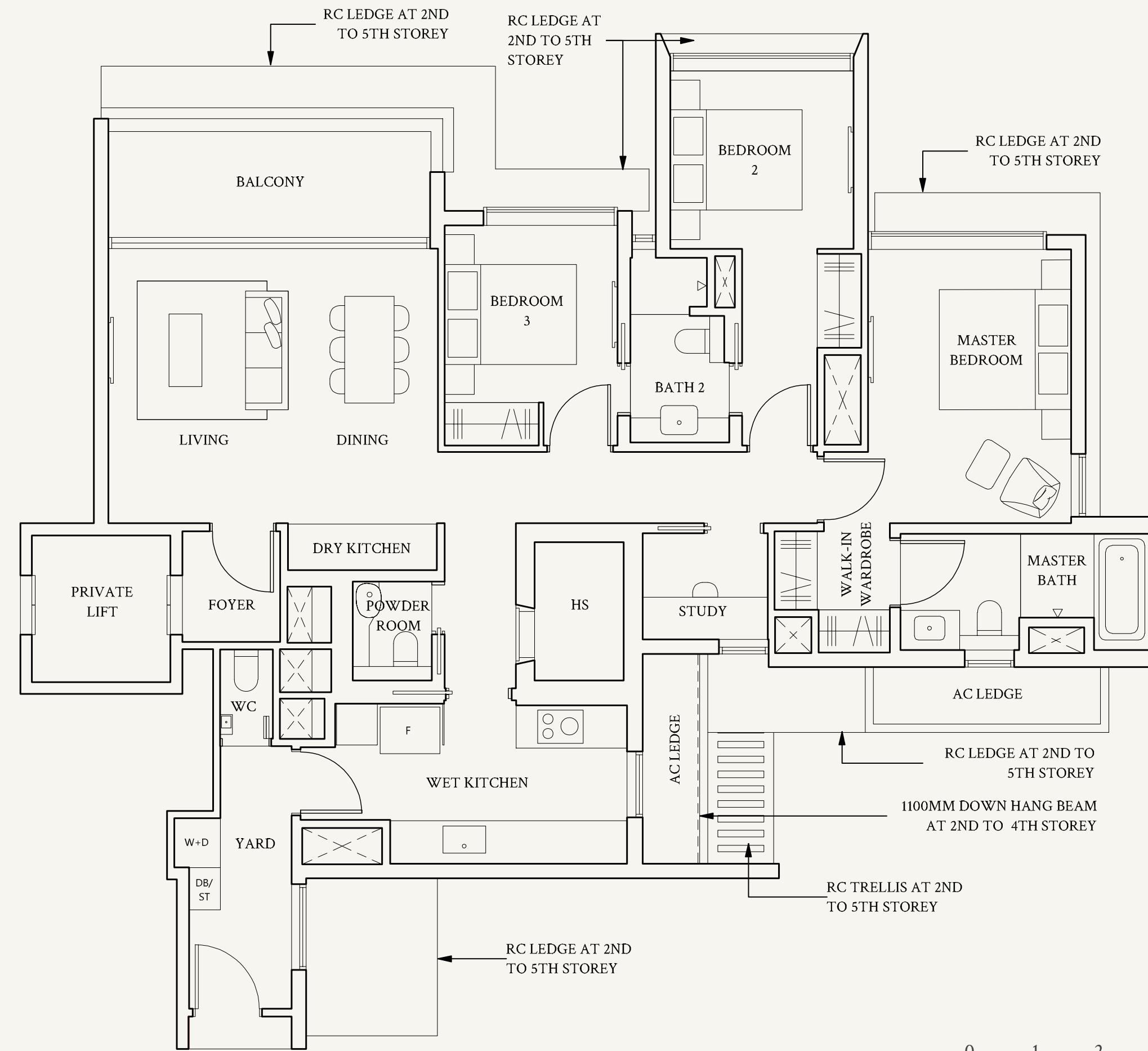
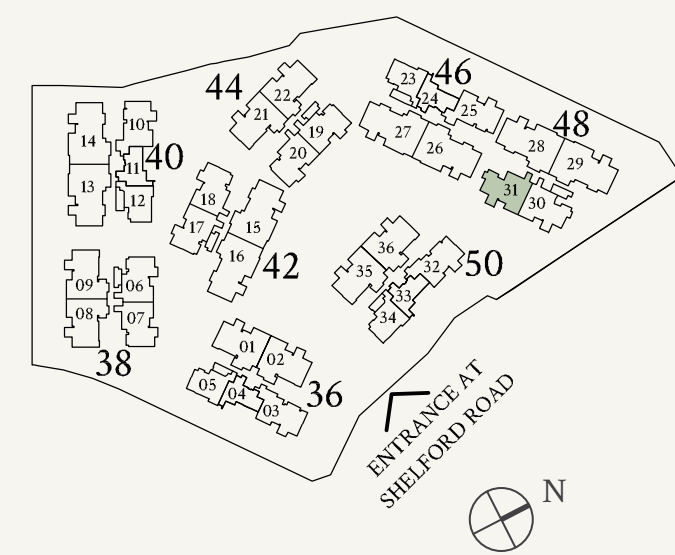
Not to scale

TYPE CS3(p1)
143 sqm | 1539 sqft

#01-31



Not to scale



Areas include AC ledge, balcony, private enclosed space (PES) or private roof terrace (PRT), where applicable. All RC ledges are excluded from strata area and non-load bearing. The plans are subjected to change as may be required by relevant authorities. All areas and measurements stated herein as approximate and subject to final survey.

3-Bedroom + Study

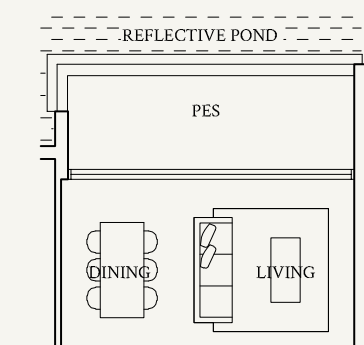
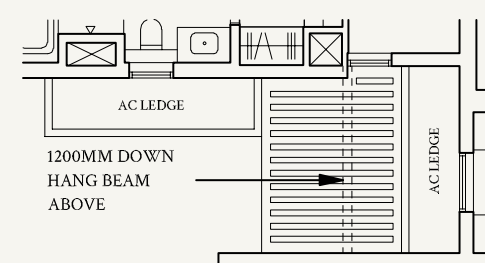
TYPE CS4
143 sqm | 1539 sqft

TYPE CS4(p1)
143 sqm | 1539 sqft

#02-30 to #05-30

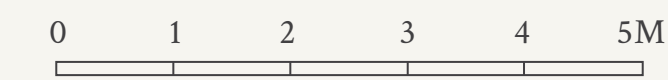
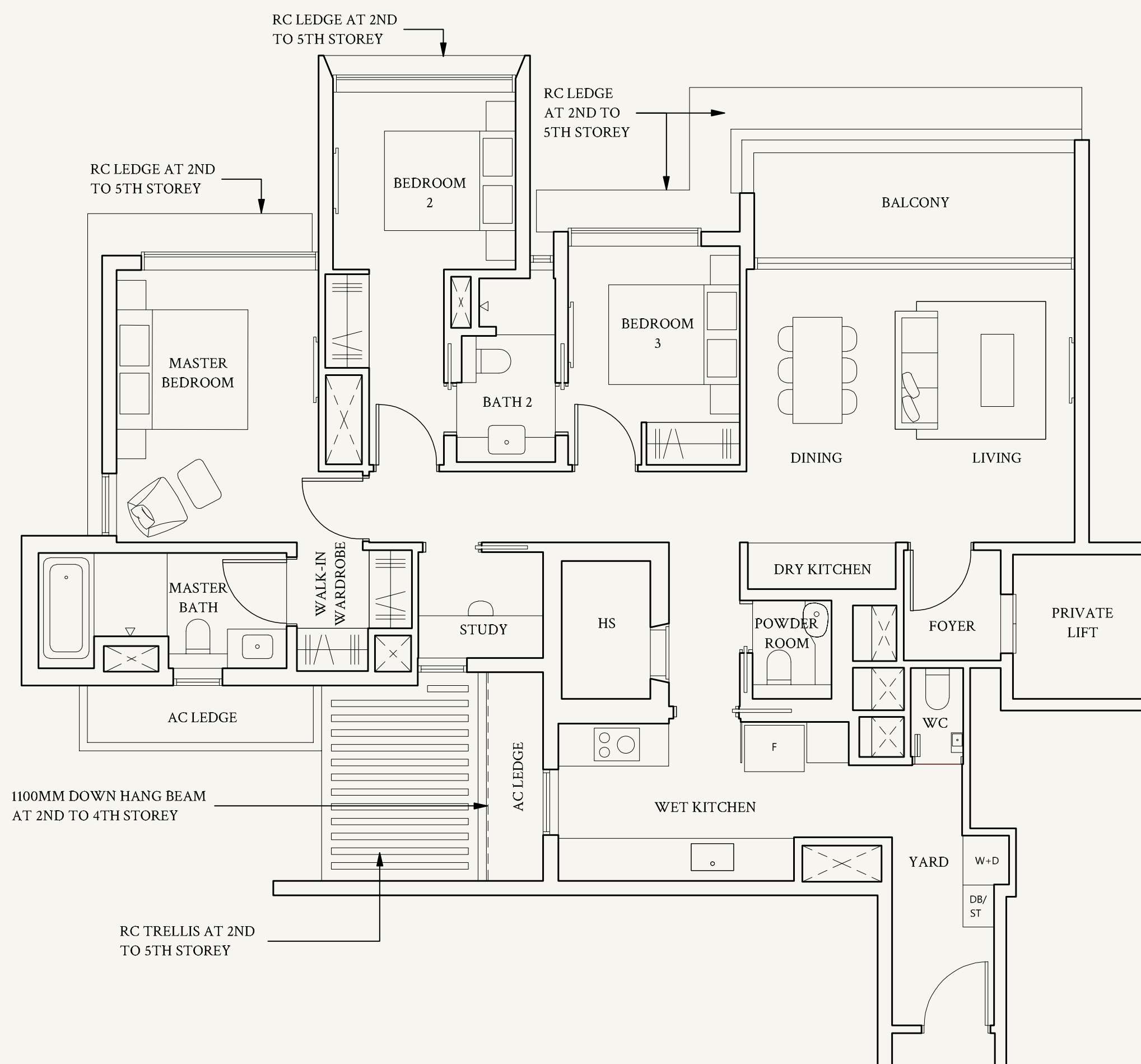
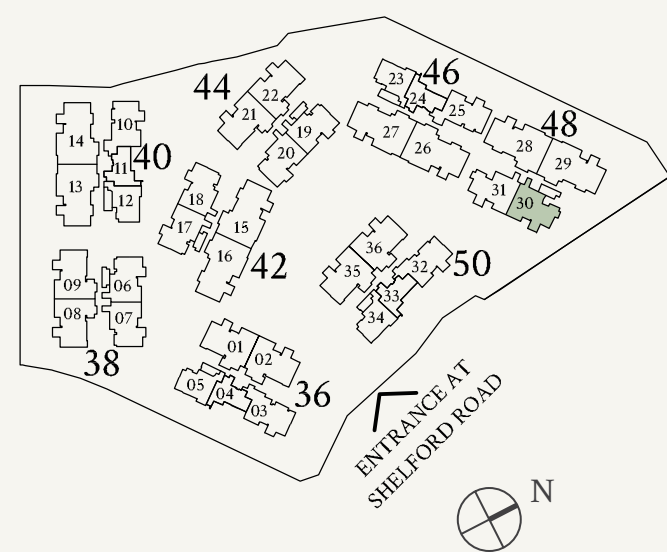
#01-30

#05-30



Not to scale

Not to scale



Areas include AC ledge, balcony, private enclosed space (PES) or private roof terrace (PRT), where applicable. All RC ledges are excluded from strata area and non-load bearing. The plans are subjected to change as may be required by relevant authorities. All areas and measurements stated herein as approximate and subject to final survey.

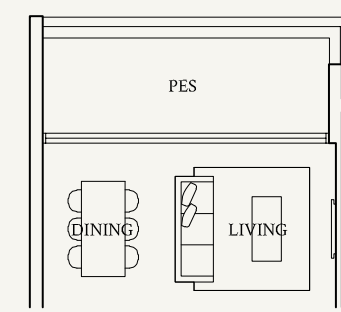
3-Bedroom + Study

TYPE CS5
143 sqm | 1539 sqft

#02-25 to #05-25
#02-10* to #05-10*

TYPE CS5(p1)
143 sqm | 1539 sqft

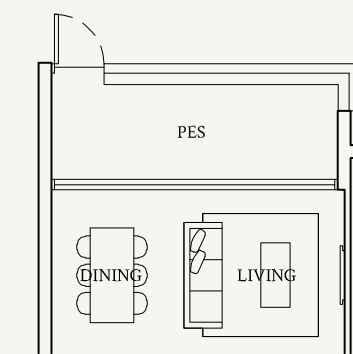
#01-25



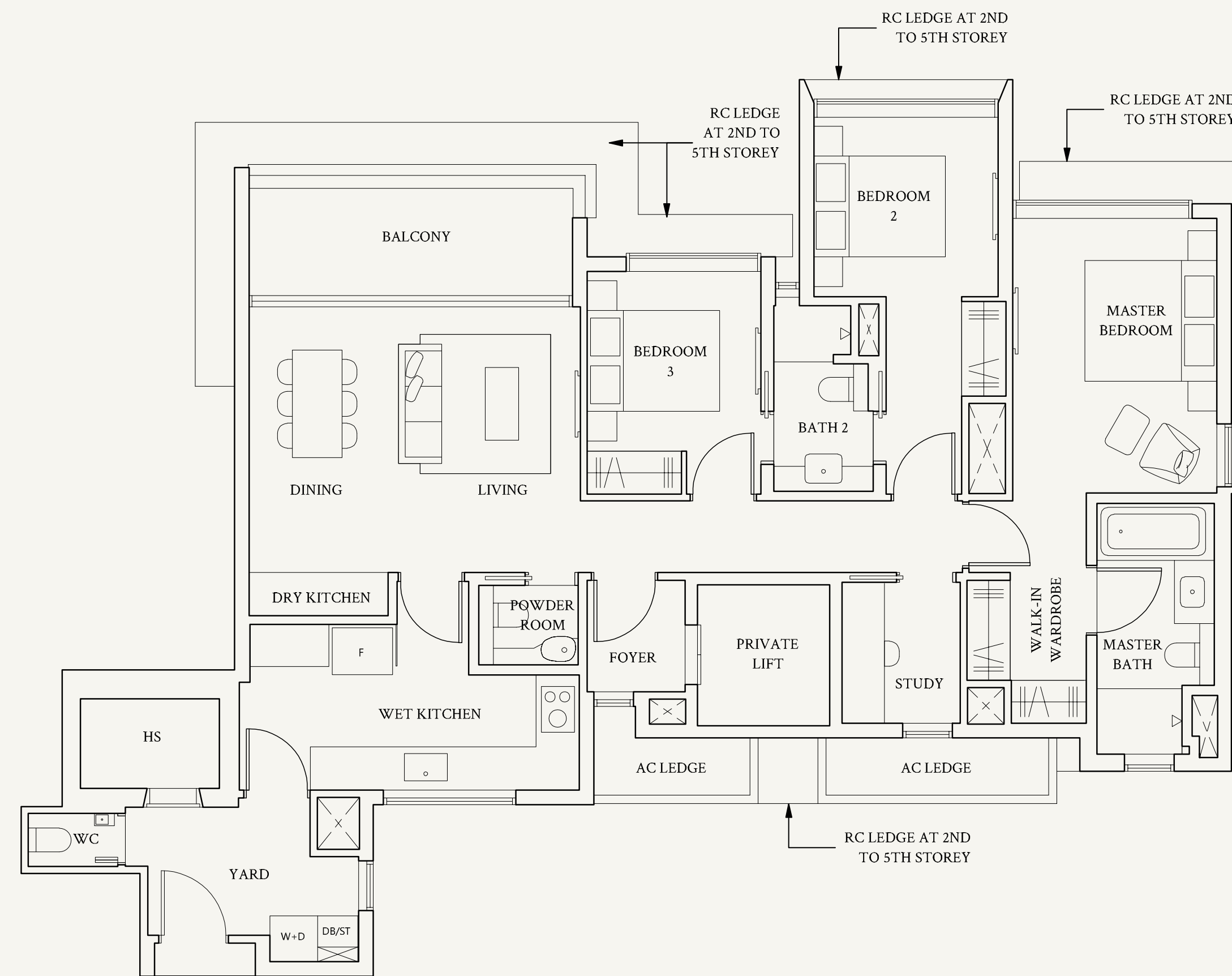
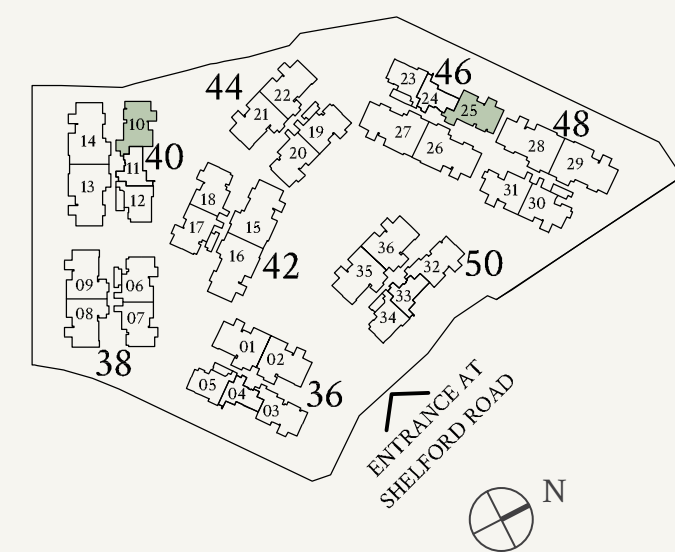
Not to scale

TYPE CS5(p2)
143 sqm | 1539 sqft

#01-10*



Not to scale



Areas include AC ledge, balcony, private enclosed space (PES) or private roof terrace (PRT), where applicable. All RC ledges are excluded from strata area and non-load bearing. The plans are subjected to change as may be required by relevant authorities. All areas and measurements stated herein as approximate and subject to final survey.

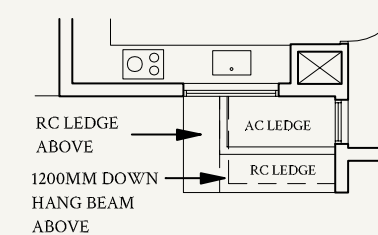
*Mirrored unit

3-Bedroom + Study

TYPE CS6
143 sqm | 1539 sqft

#02-03 to #05-03
#02-32 to #05-32

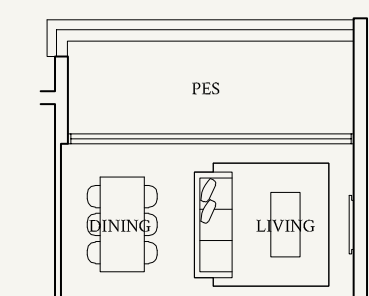
#05-03, #05-32



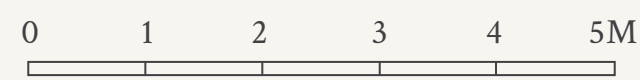
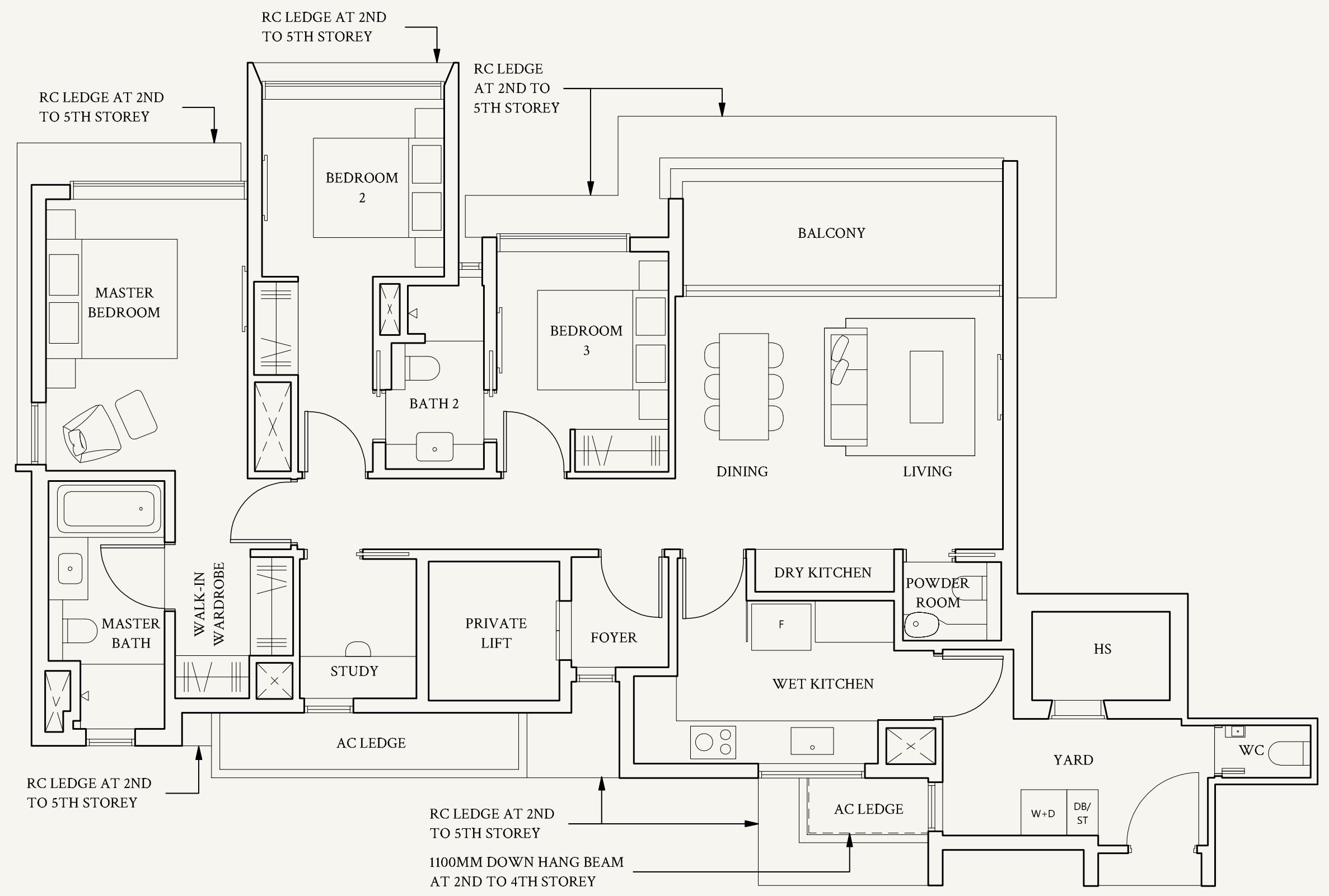
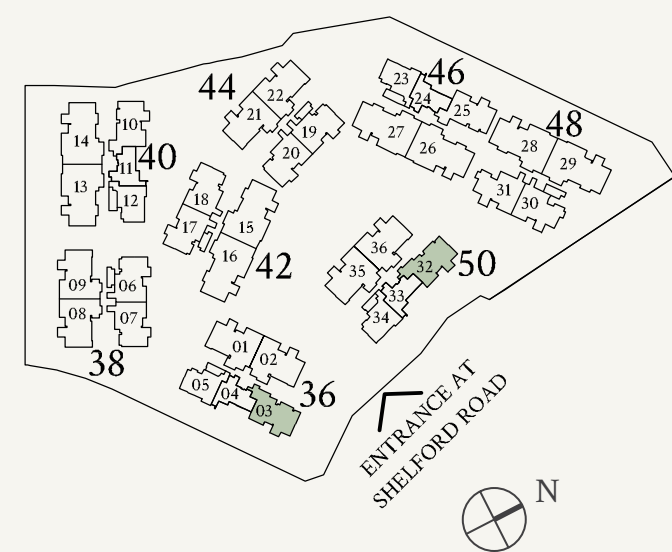
Not to scale

TYPE CS6(p1)
143 sqm | 1539 sqft

#01-03, #01-32



Not to scale



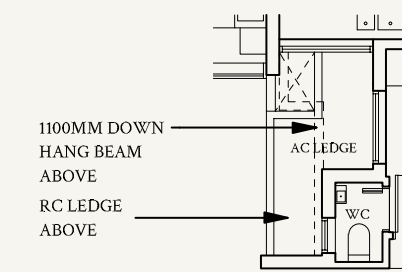
Areas include AC ledge, balcony, private enclosed space (PES) or private roof terrace (PRT), where applicable. All RC ledges are excluded from strata area and non-load bearing. The plans are subjected to change as may be required by relevant authorities. All areas and measurements stated herein as approximate and subject to final survey.

4-Bedroom

TYPE D1
172 sqm | 1851 sqft

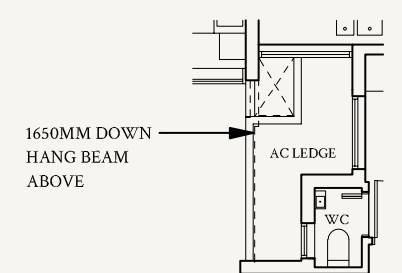
#02-01 to #04-01
#02-35 to #05-35
#02-02* to #05-02*
#02-36* to #04-36*

#04-01, #04-36*

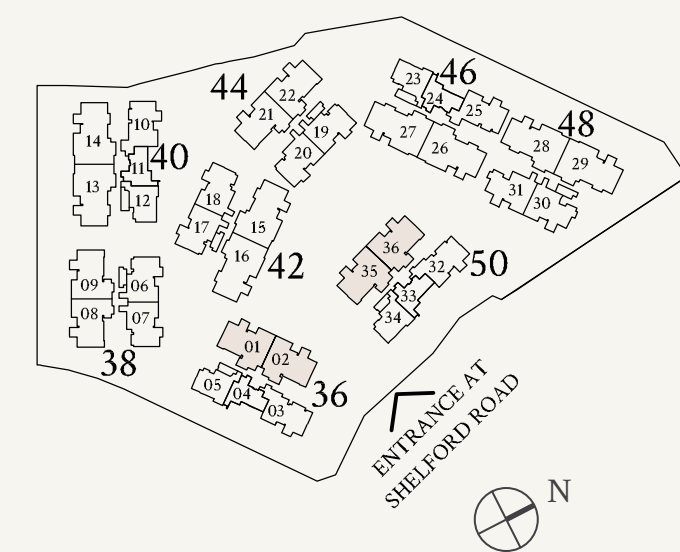


Not to scale

#05-35, #05-02*

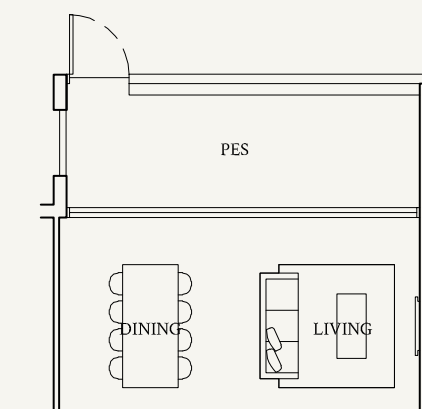


Not to scale

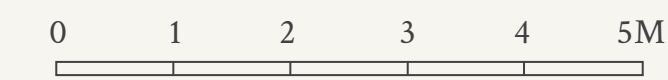
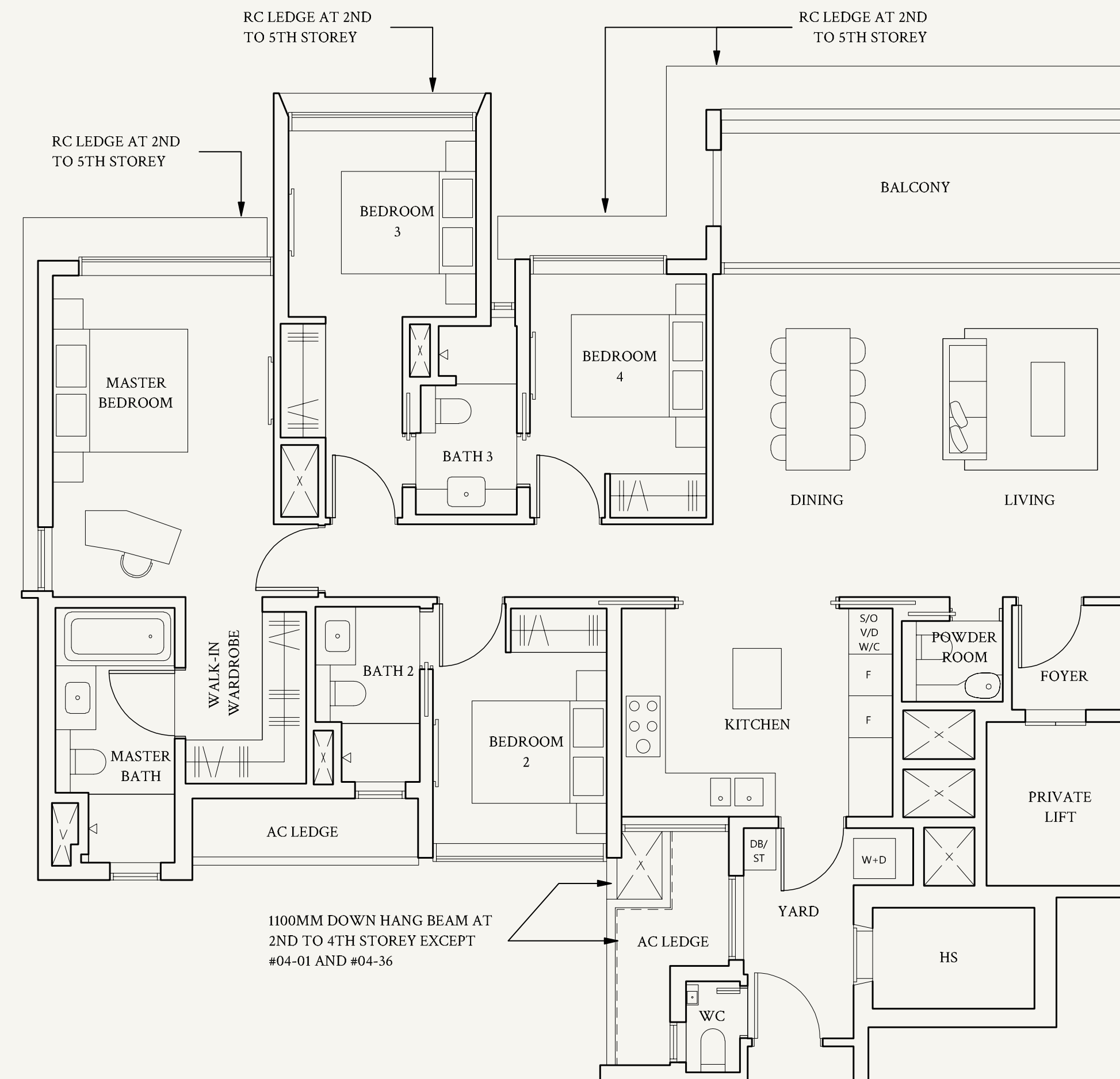


TYPE D1(p2)
172 sqm | 1851 sqft

#01-01, #01-35
#01-02*, #01-36*



Not to scale



Areas include AC ledge, balcony, private enclosed space (PES) or private roof terrace (PRT), where applicable. All RC ledges are excluded from strata area and non-load bearing. The plans are subjected to change as may be required by relevant authorities. All areas and measurements stated herein as approximate and subject to final survey.

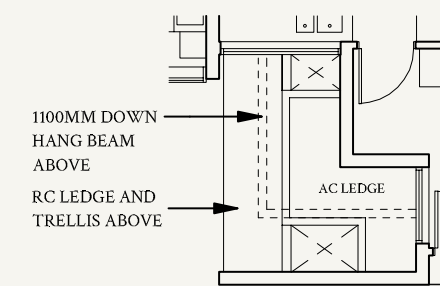
*Mirrored unit

4-Bedroom

TYPE D2
172 sqm | 1851 sqft

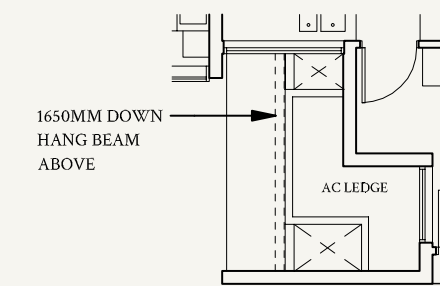
#02-08 to #05-08
#02-21 to #04-21
#02-09* to #04-09*
#02-22* to #05-22*

#04-21, #04-09*

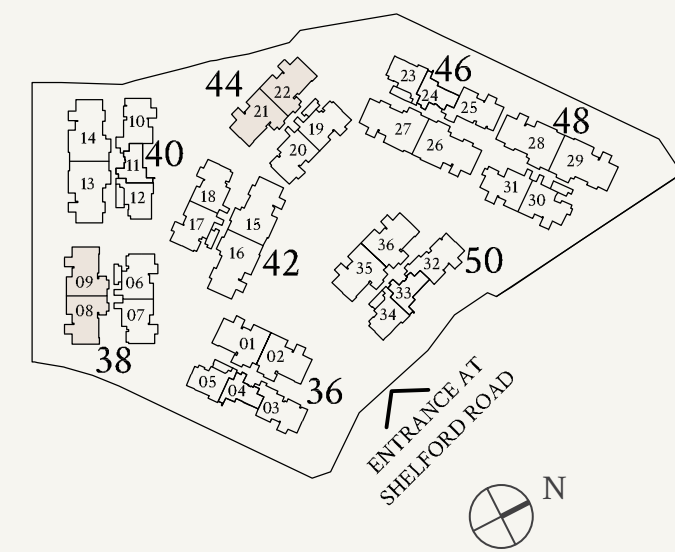


Not to scale

#05-08, #05-22*

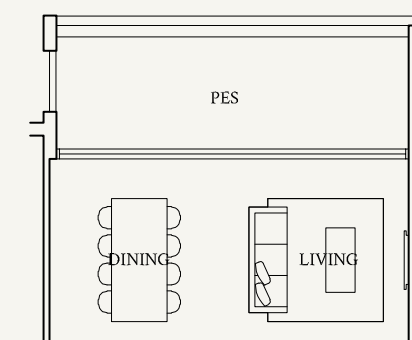


Not to scale

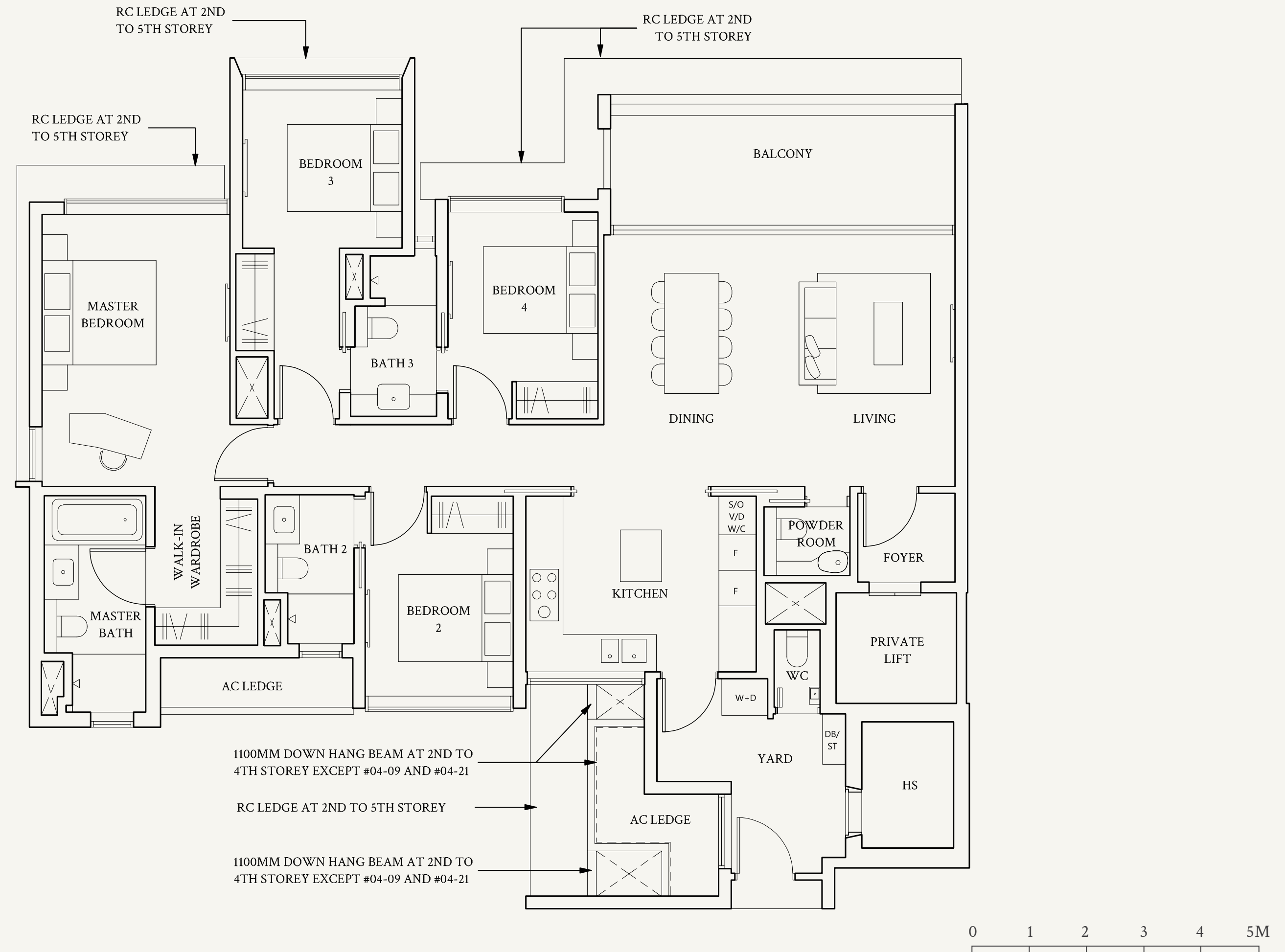


TYPE D2(p1)
172 sqm | 1851 sqft

#01-08, #01-21
#01-09*, #01-22*



Not to scale



Areas include AC ledge, balcony, private enclosed space (PES) or private roof terrace (PRT), where applicable. All RC ledges are excluded from strata area and non-load bearing. The plans are subjected to change as may be required by relevant authorities. All areas and measurements stated herein as approximate and subject to final survey.

*Mirrored unit



For illustration only.

An Innermost Sanctum

Retreat into the sanctity of the spacious master bedroom after a day well spent. Here, there is space and time for peaceful interludes and personal reflection. Here, you will find solace to recharge and awaken to a new dawn of beginnings.

5-Bedroom

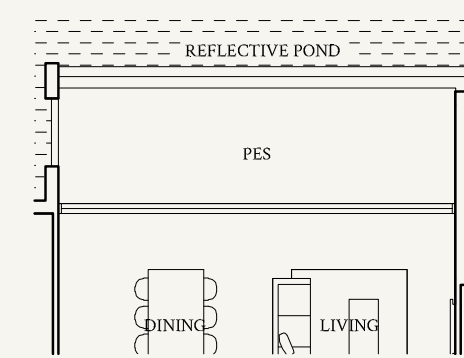
TYPE E1
220 sqm | 2368 sqft

- #02-13 to #04-13
- #02-15 to #05-15
- #02-26 to #05-26
- #02-28 to #04-28

- #02-14* to #05-14*
- #02-16* to #04-16*
- #02-27* to #04-27*
- #02-29* to #05-29*

TYPE E1(p1)
220 sqm | 2368 sqft

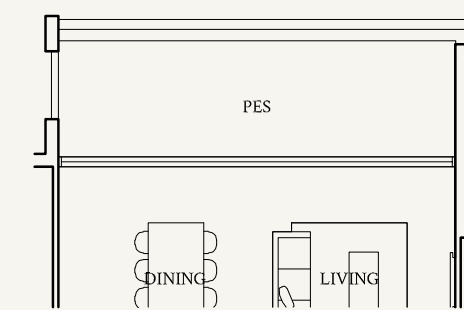
- #01-26, #01-27*



Not to scale

- #01-13, #01-28

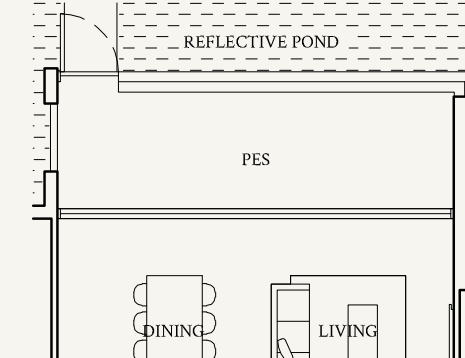
- #01-14*, #01-29*



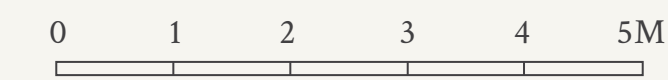
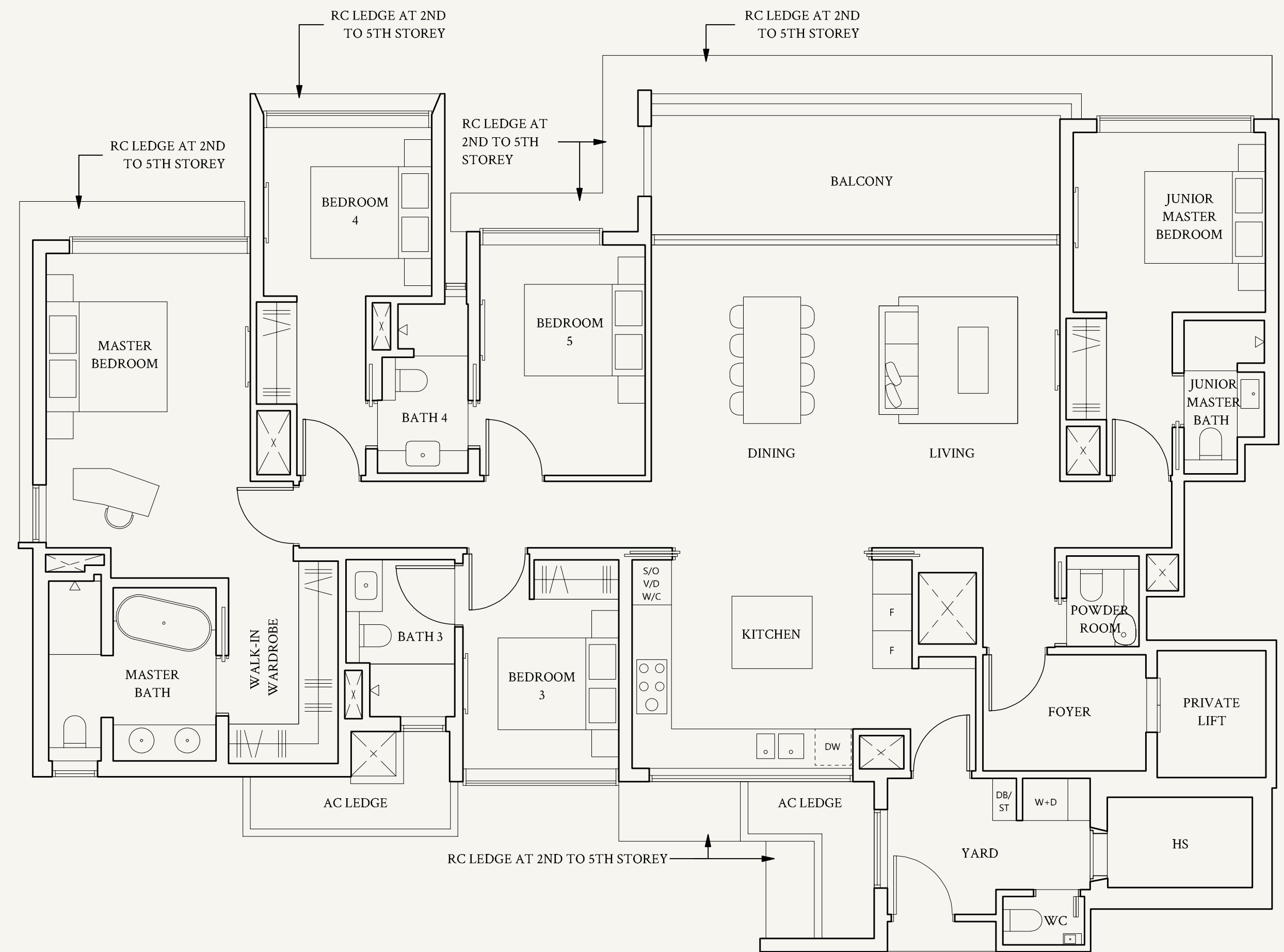
Not to scale

TYPE E1(p2)
220 sqm | 2368 sqft

- #01-15, #01-16*



Not to scale



Areas include AC ledge, balcony, private enclosed space (PES) or private roof terrace (PRT), where applicable. All RC ledges are excluded from strata area and non-load bearing. The plans are subjected to change as may be required by relevant authorities. All areas and measurements stated herein as approximate and subject to final survey.

*Mirrored unit

